

**ADDENDUM NO. 3**

to  
**CONTRACT DOCUMENTS**

for  
**ADDITIONS, ALTERATIONS AND RENOVATIONS (PHASE 1) AT THE  
NORTHERN BURLINGTON COUNTY REGIONAL HIGH SCHOOL**  
160 Mansfield Road East, Columbus, NJ 08022

for the  
**NORTHERN BURLINGTON COUNTY REGIONAL SCHOOL DISTRICT**  
COLUMBUS, BURLINGTON COUNTY, NEW JERSEY

**Issued: September 6, 2019**

**FVHD PROJECT #5086.3A / NBC Bid #19-010 / NJDOE #3690-050-17-1000**

**FRAYTAK VEISZ HOPKINS DUTHIE, P.C.**

**Architects/Planners**

1515 Lower Ferry Road, Trenton, NJ 08618  
William D. Hopkins III, AIA, LEED AP No. 21AI01706000

**VAN CLEEF ENGINEERING ASSOCIATES**

**Consulting Civil Engineers**

4 AAA Drive, Suite 103, Hamilton, NJ 08691

**HARRISON - HAMNETT, PC**

**Consulting Structural Engineers**

40 Knowles St., Pennington, NJ 08534

**SHARPE ENGINEERING, INC.**

**Consulting MEP Engineers**

555 Second Avenue, Collegeville, PA 19426

**INTENT: This Document supersedes all conflicting and contrary information in said Contract Documents. Said documents are hereby amended in certain particulars as described herein after. Unless specifically noted or specified hereinafter all work shall conform to the applicable provisions of the Contract Documents. Bidders shall acknowledge receiving this document and previously issued Addenda No's. 1 and 2 on the Bid Proposal Form.**

This Addendum includes two (2) pages and the following:

1. MEPFP Addendum No. 1, as prepared by Sharpe Engineering, Inc., Dated September 6, 2019 (1-page).
2. Revised Drawings: E301, E502, E601.

**REFER TO DRAWINGS**

The following Drawings are attached to this Addendum:

**DRAWING NO. TITLE**

E301	ELECTRICAL NEW WORK - POWER
E502	ELECTRICAL DETAILS
E601	ELECTRICAL SCHEDULES

The following Drawings to be revised or corrected as follows:

**DRAWING NO. CHANGES AND CORRECTIONS**

E301	Delete drawing E301 in its entirety and substitute with revised drawing E301, attached to this Addendum.
E502	Delete drawing E502 in its entirety and substitute with revised drawing E502, attached to this Addendum.
E601	Delete drawing E601 in its entirety and substitute with revised drawing E601, attached to this Addendum.

**END OF ADDENDUM NO. 3**

## MEPFP ADDENDUM NO. 1

DATE: SEPTEMBER 6, 2019

PROJECT: ADDITIONS, ALTERATIONS AND RENOVATIONS AT NORTHERN  
BURLINGTON COUNTY REGIONAL HIGH SCHOOL – PHASE 1

OWNER: NORTHERN BURLINGTON COUNTY REGIONAL SCHOOL DISTRICT

CONSULTING ENGINEER: SHARPE ENGINEERING  
130 FUTURA DRIVE  
SUITE 200  
LIMERICK TOWNSHIP, PA 19464

PROJECT NO.: FVHD# 5086.3A SHARPE ENG. #18237-3

The following changes are hereby incorporated into the construction documents dated July 12, 2019, for the above project:

---

### Part 1 - Plumbing Drawings

A. NONE

### Part 2 - Mechanical Drawings

A. NONE

### Part 3 - Electrical Drawings

A. Sheet E301

1. Revise branch circuit for RAC-3 from Panel 'HP3' to Panel 'HPH2'.

B. Sheet E502

1. Revise feeder for 'HP3' from a 400A breaker to a 70A breaker. The panelboard shall still have a 400A bus, but will temporarily be fed at 70A.

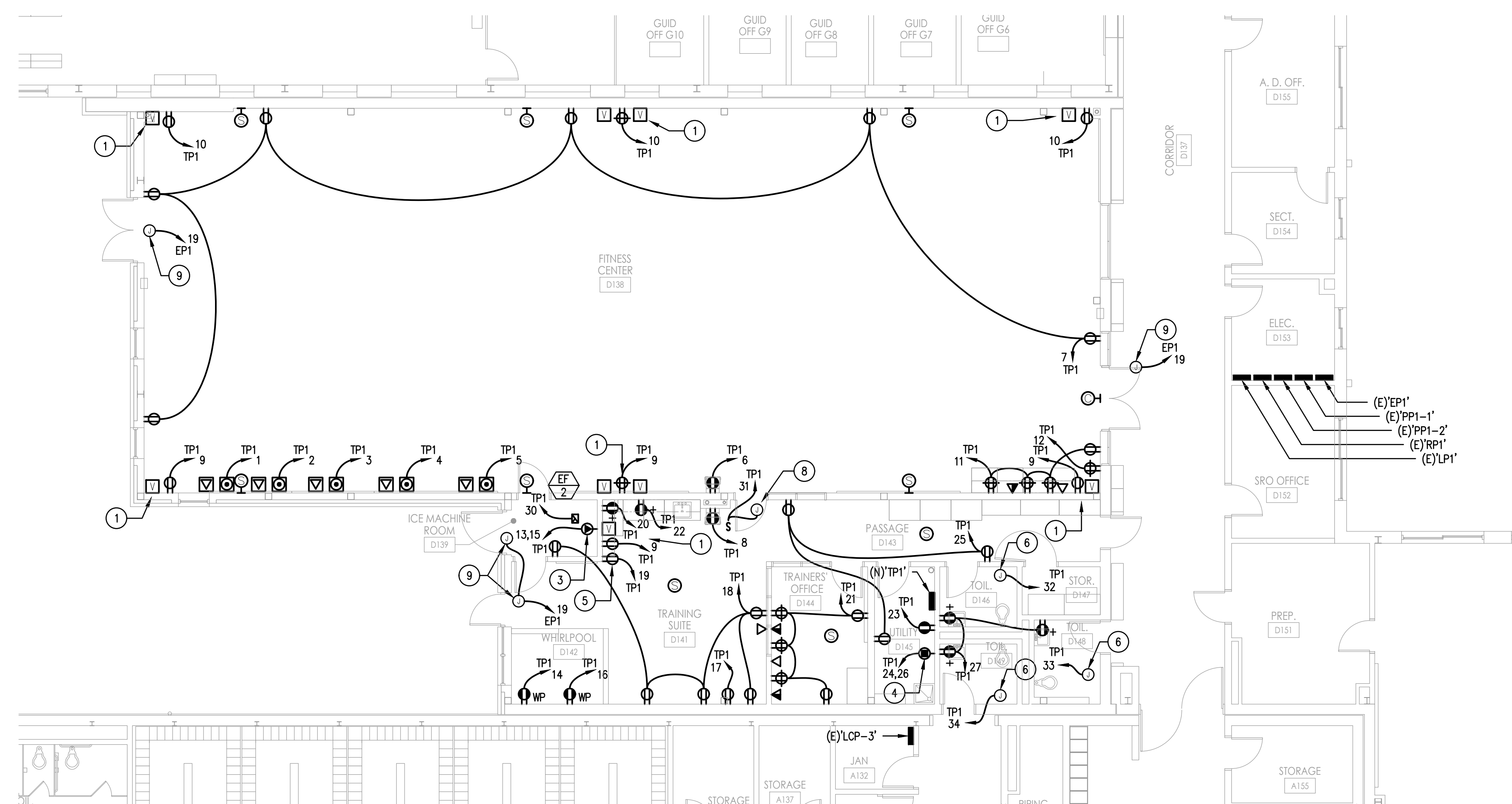
C. Sheet E601

1. Move RAC-3 from Panel 'HP3' to existing spare breaker in Panel 'HPH2'.

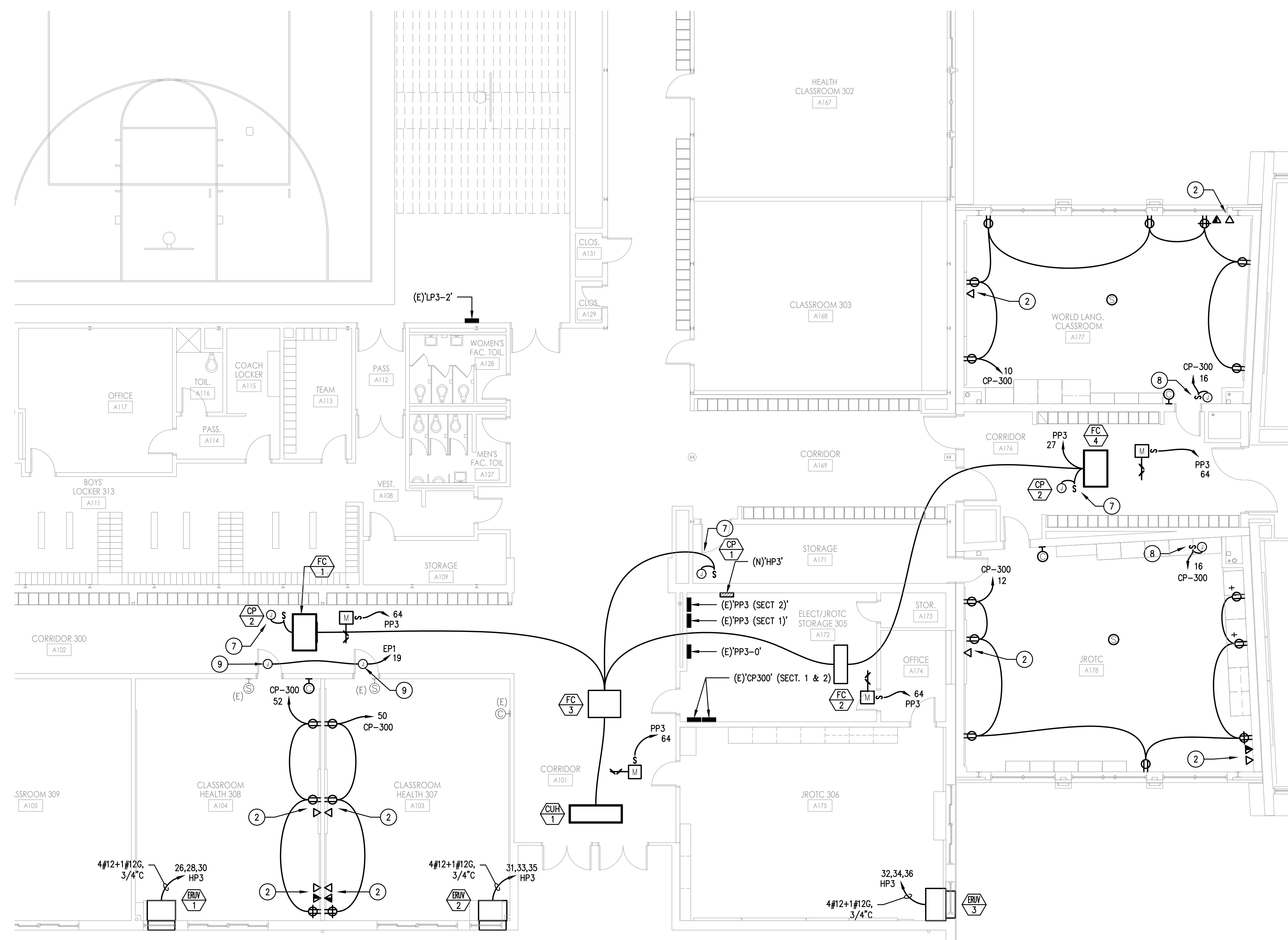
### Part 4 - Fire Protection Drawings

A. NONE

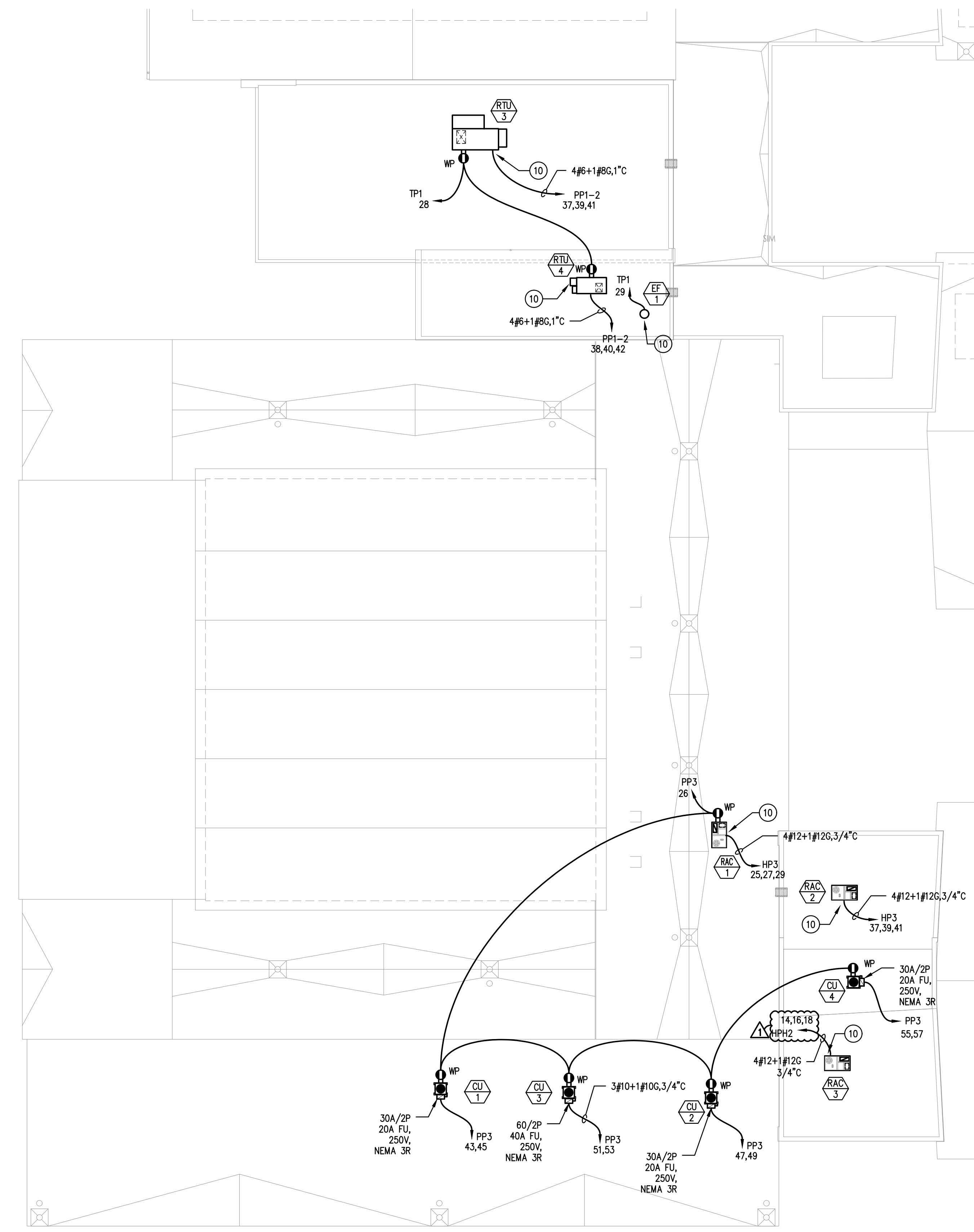
**- END OF MEPFP ADDENDUM NO. 1 -**



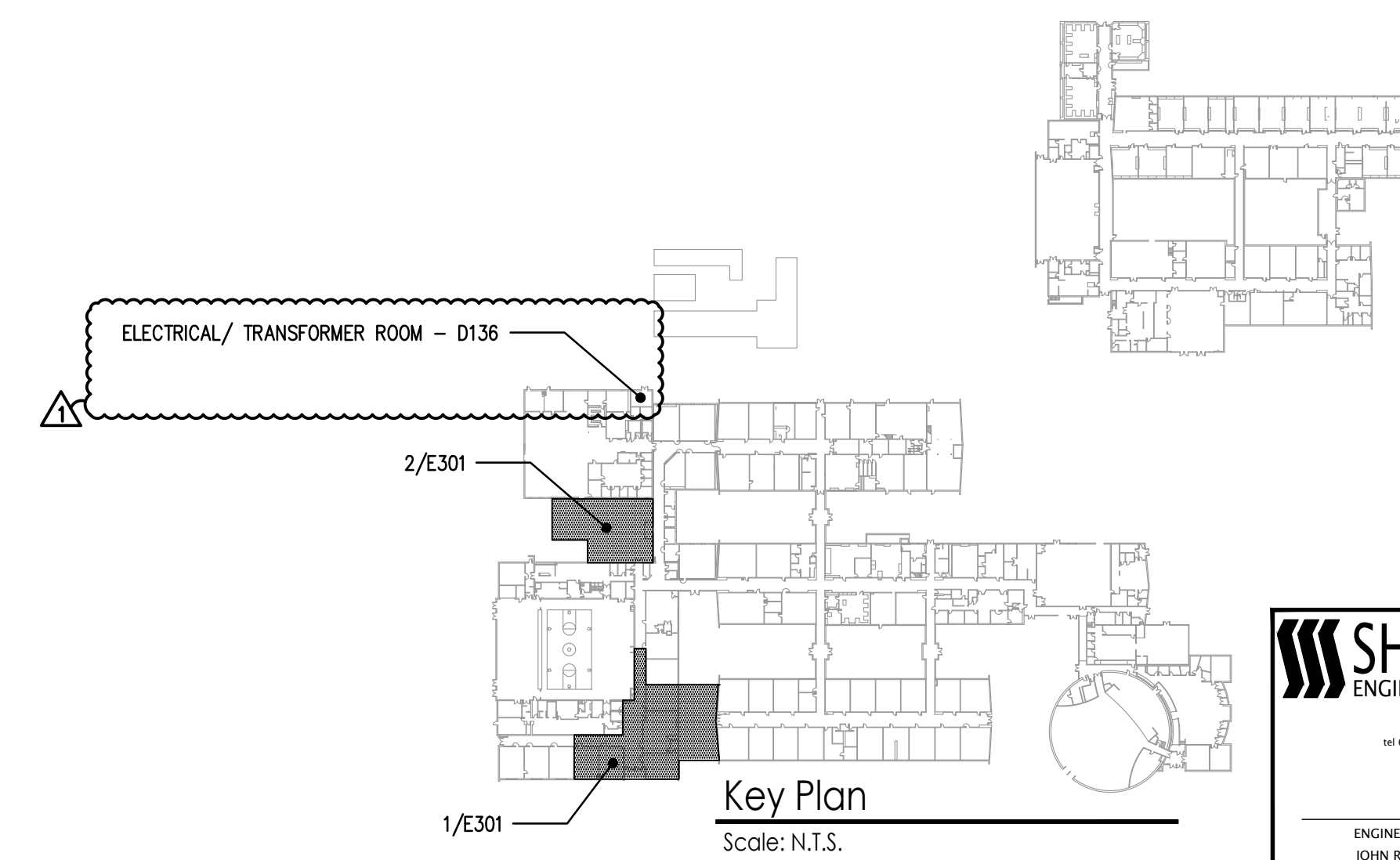
2 ELECTRICAL - NEW WORK - FITNESS CENTER POWER  
SCALE: 1/8" = 1'-0"



1 ELECTRICAL - NEW WORK - BLOCK 'A' POWER  
SCALE: 1/8" = 1'-0"



3 ELECTRICAL - ROOF PLAN  
SCALE: 3/16" = 1'-0"



- KEY NOTES
- RECEPTACLE AND VIDEO OUTLET FOR CEILING MOUNTED TV/MONITOR. COORDINATE MOUNTING HEIGHT AND LOCATION WITH MOUNTING HEIGHT AND LOCATION OF CEILING MOUNTED TV/MONITOR. FOR VIDEO OUTLET, PROVIDE EMPTY BACK BOX AND 1-1/2" CONDUIT WITH PULL STRING UP TO ACCESSIBLE CONCEALED SPACE ABOVE CEILING.
  - POWER AND DATA FOR SMART BOARD. IN AREAS OF EXISTING CMU CONSTRUCTION, MOUNT RECEPTACLE AND EMPTY 2-GANG BACK BOX BENEATH SMART BOARD. COORDINATE MOUNTING HEIGHTS WITH MOUNTING HEIGHTS OF SMART BOARDS. IN AREAS OF NEW CONSTRUCTION AND EXISTING DRYWALL CONSTRUCTION, PROVIDE RECEPTACLE AND (2) EMPTY BOXES IN A RECESSED IN-WALL MEDIA BOX, BASIS OF DESIGN: HUBBELL #NSA124M. PROVIDE EMPTY 2-GANG BACK BOX AT TEACHER'S DESK. PROVIDE ONE 1" CONDUIT AND ONE 1-1/2" CONDUIT WITH PULL STRING FROM EMPTY BACK BOXES) AT SMART BOARD TO EMPTY BACK BOX AT TEACHER'S DESK OR OTHER INDICATED LOCATION.
  - RECEPTACLE FOR RELOCATED ICE MAKER. PROVIDE NEMA 14-20R RECEPTACLE MOUNTED AT 72" AFF. CONFIRM NEMA RECEPTACLE TYPE PRIOR TO PURCHASE. PROVIDE 3/4" WITH 1/2" GROUND IN 3/4" CONDUIT BACK TO POWER SOURCE.
  - RECEPTACLE FOR CLOTHES DRYER. PROVIDE NEMA 14-30R RECEPTACLE. PROVIDE 3/4" WITH 1/2" GROUND IN 3/4" CONDUIT BACK TO POWER SOURCE.
  - RECEPTACLE FOR REFRIGERATOR. COORDINATE MOUNTING HEIGHT AND LOCATION WITH REFRIGERATOR LOCATION AND OUTLET REQUIREMENTS.
  - POWER FOR HAND DRYER.
  - PROVIDE DISCONNECT SWITCH AND HARD-WIRED CONNECTION TO CONDENSATE PUMP. COORDINATE LOCATION AND MOUNTING HEIGHT OF SWITCH WITH LOCATION AND MOUNTING HEIGHT OF CONDENSATE PUMP.
  - POWER FOR FUTURE RADON VENT FAN. PROVIDE SWITCH AND JUNCTION BOX IN CONCEALED, ACCESSIBLE SPACE ABOVE CEILING.
  - POWER FOR DOOR LOCKS. PROVIDE 120V CIRCUIT TO JUNCTION BOX IN CONCEALED, ACCESSIBLE SPACE ABOVE CEILING AT DOOR.
  - FACTORY MOUNTED DISCONNECT.

JOHN J. VEISZ, AIA, CSBA  
NJ: 214036993 | PA: RA01019  
WILLIAM D. HOPKINS III, AIA, LEED AP  
NJ: 214036993 | PA: RA010200  
GEORGE B. DUTHIE, JR., AIA, PP  
NJ: 214036993

**FVHHD** architects  
planners  
Frattak Veisz Hopkins Duthie P C  
Corporate: 1515 Lower Ferry Road - Trenton - New Jersey 08628  
Pennsylvania: 140 Whitaker Ave - Mont Clare - Pennsylvania 19453

Project Name  
Additions, Alterations  
and Renovations at  
Northern Burlington  
County Regional High  
School - Phase 1

Project Owner Name  
Northern Burlington  
County Regional  
School District

Project Location  
160 Mansfield Rd, East,  
Columbus, NJ 08022

Project Number  
5086.3A

Project Date  
07.12.2019

Checked By  
PDF

Drawn By  
DFW

Scale  
AS NOTED

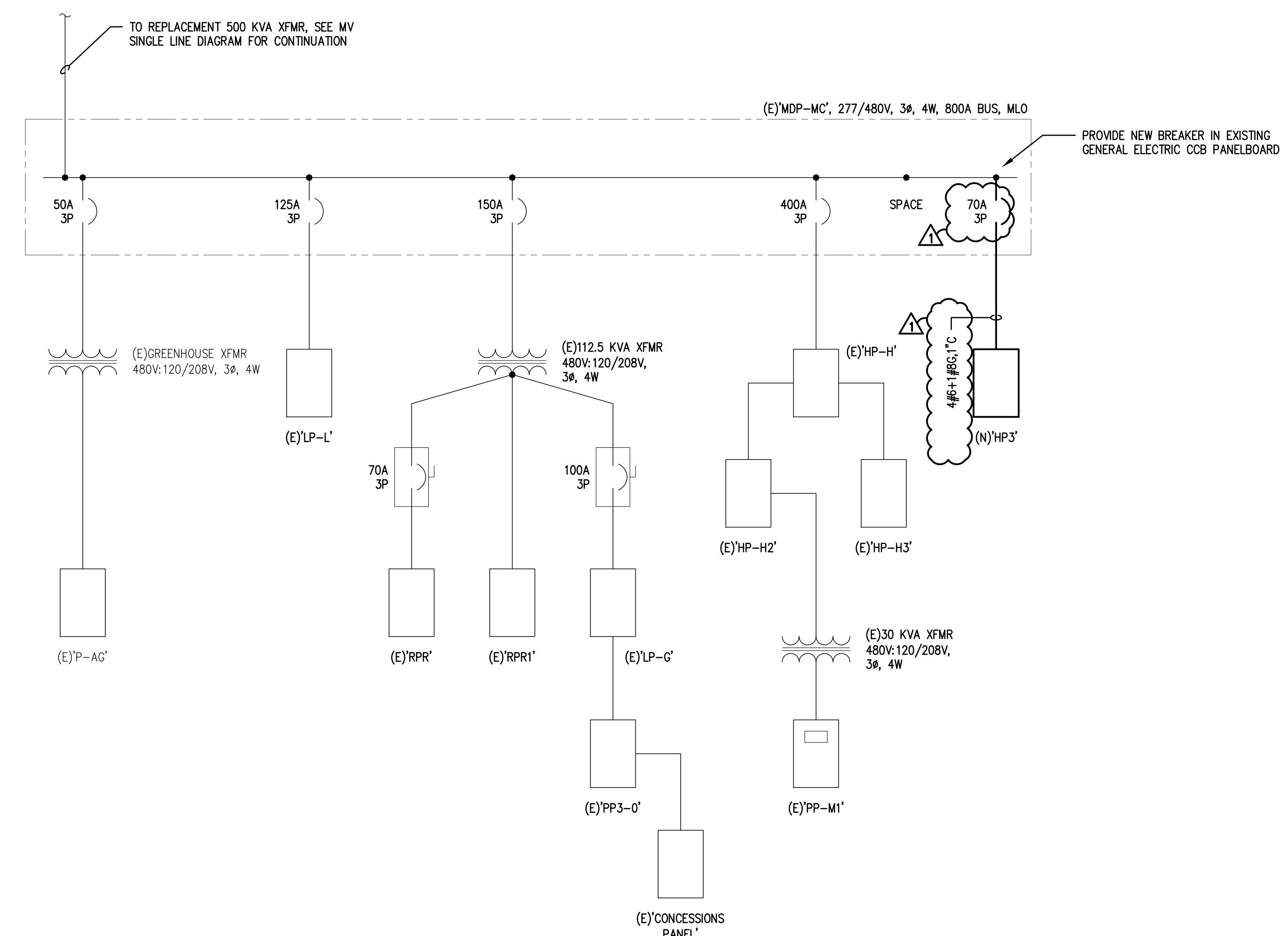
Drawing Name  
ELECTRICAL NEW  
WORK - POWER

Revisions  
No. Date Description

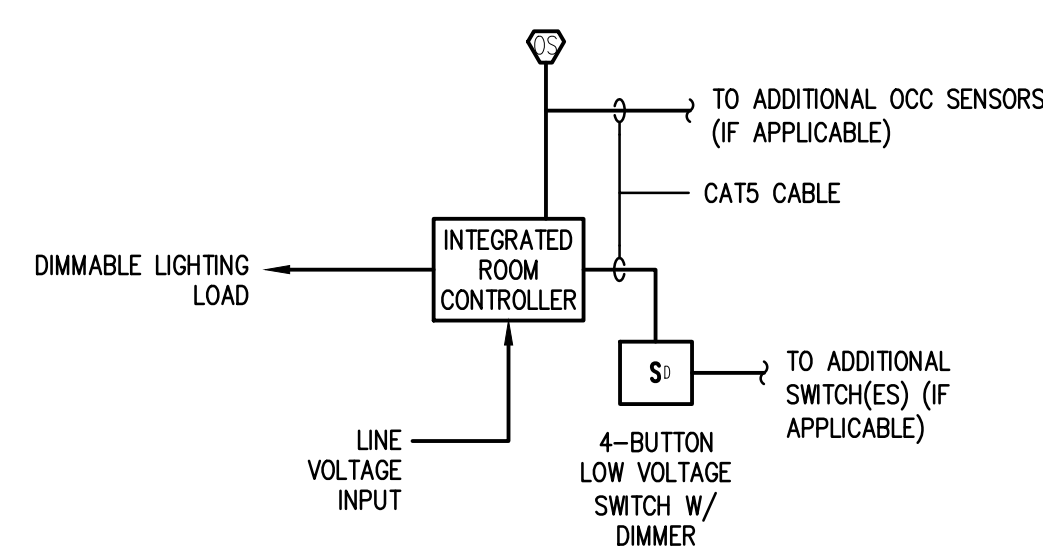
Drawing Number  
E301

SHARPE ENGINEERING, INC.  
ME Consulting Engineers  
1000 Morris Avenue, Suite 200  
Morris Township, NJ 07960  
908.586.8111 | Fax: 908.586.8112 | www.sharpe-eng.com  
© 2019 Sharpe Engineering

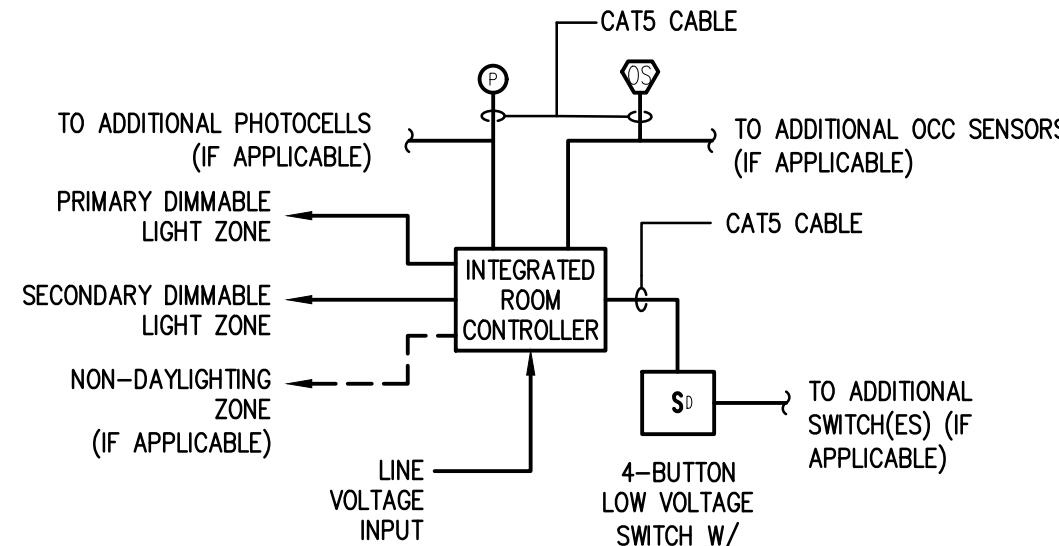
2/12/2019  
ENGINEER JOHN E. SHARPE, P.E. DATE  
NJ Lic. No. 24E004025300



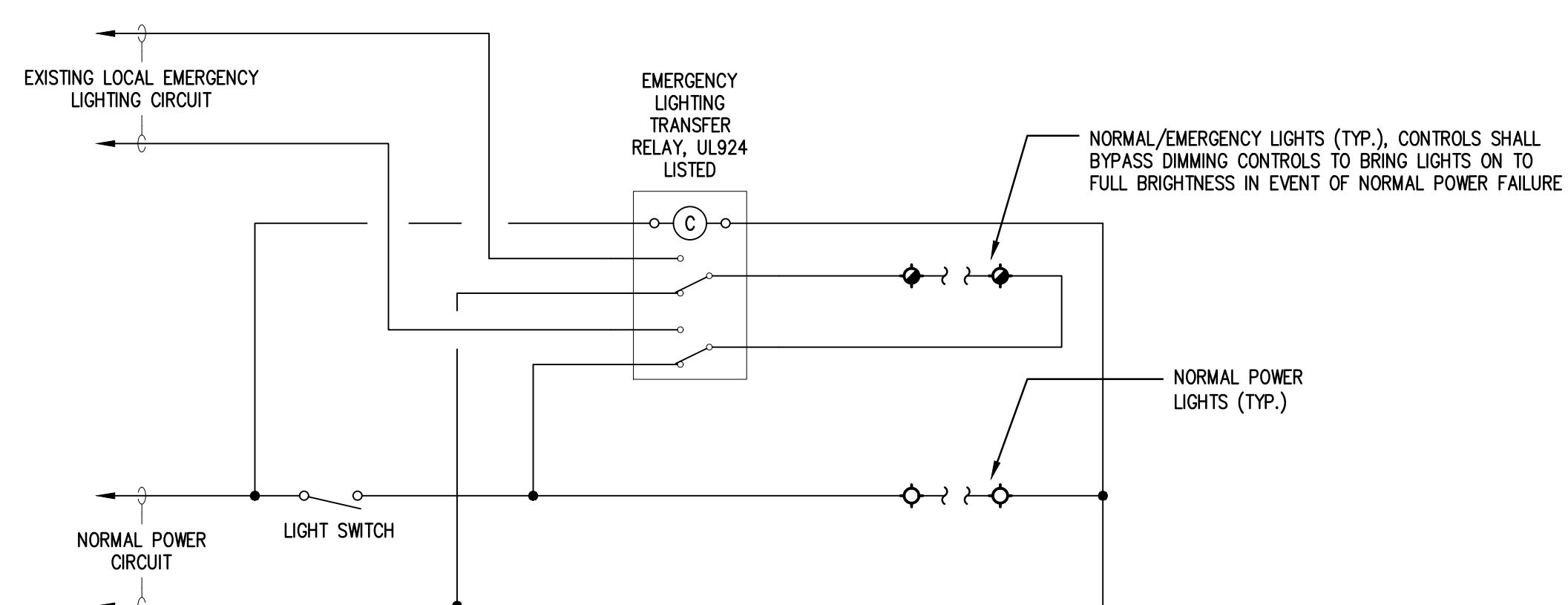
1 SINGLE LINE DIAGRAM - MEDIA CENTER  
SCALE: NONE



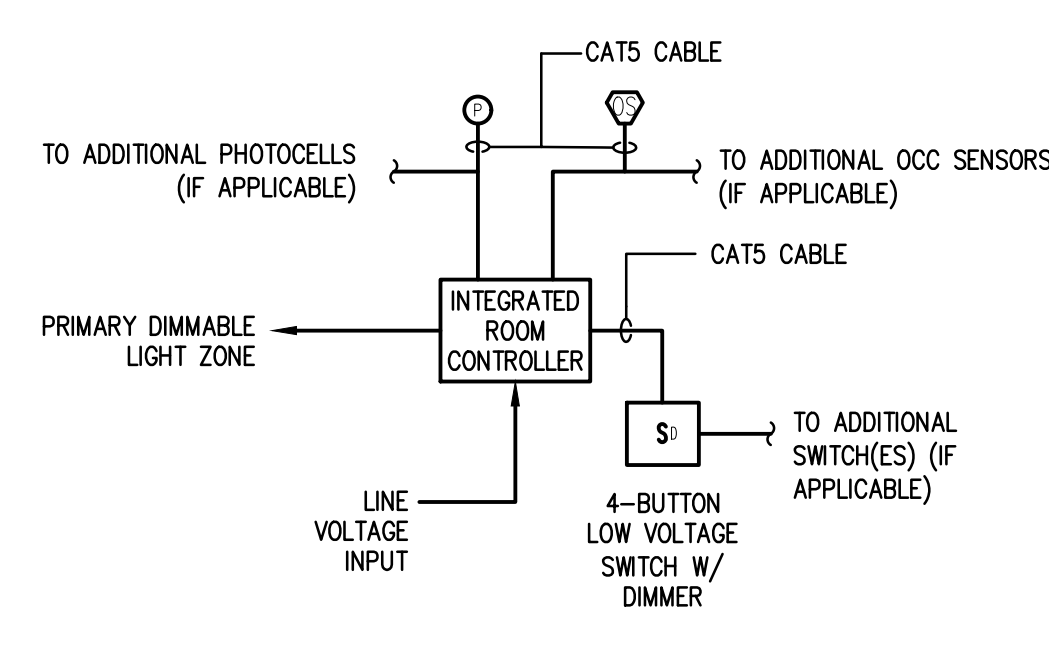
2 LIGHTING CONTROL DIAGRAM - DIMMING, OCC. SENSOR  
SCALE: NONE



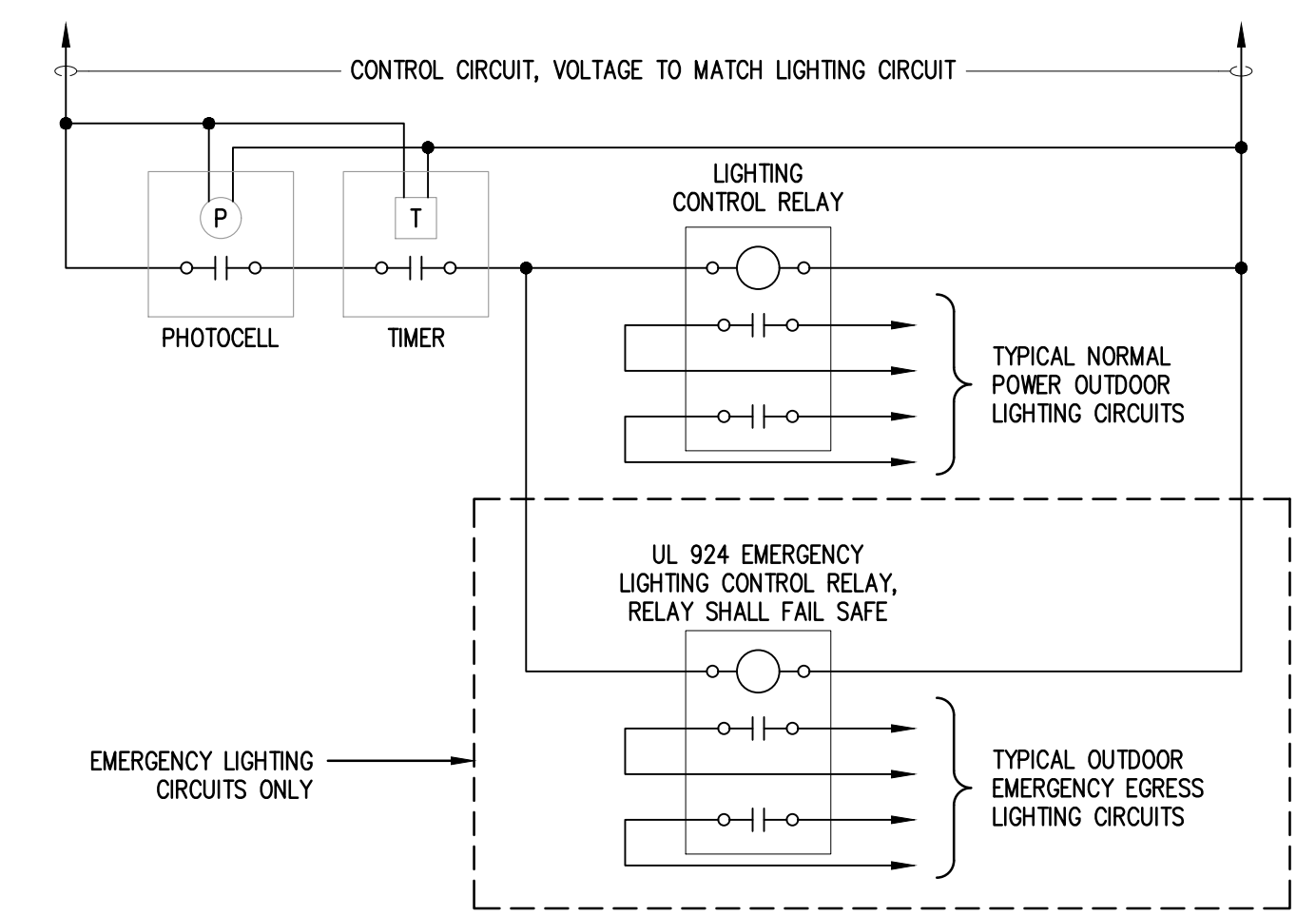
3 LIGHTING CONTROL DIAGRAM - DIMMING, OCC. SENSOR, DAYLIGHT HARVESTING  
SCALE: NONE



4 NORMAL/EMERGENCY LIGHTING CONTROL DIAGRAM  
SCALE: NONE



5 LIGHTING CONTROL DIAGRAM - FITNESS CENTER  
SCALE: NONE



6 NORMAL/EMERGENCY EXTERIOR LIGHTING CONTROL DIAGRAM  
SCALE: NONE

