

# ROOSEVELT STEM SCHOOL ADDITION AND RENOVATIONS

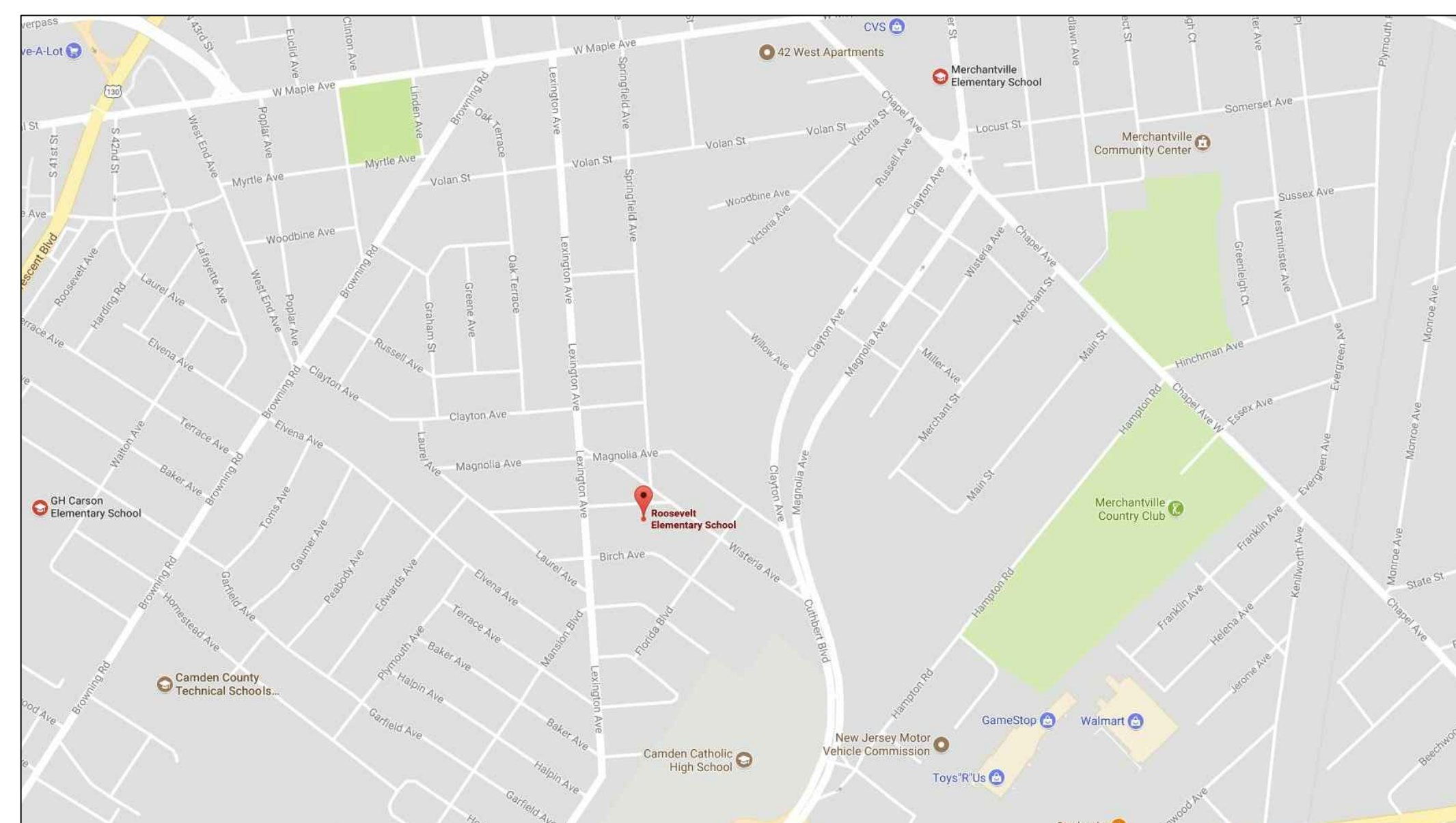
5526 WISTERIA AVENUE  
PENNSAUKEN, NEW JERSEY 08109

FOR THE  
PENNSAUKEN TOWNSHIP BOARD OF EDUCATION  
1695 HYLTON ROAD  
PENNSAUKEN, NEW JERSEY 08110

PROJECT NUMBERS: 20-66  
TYPE OF CONSTRUCTION: 2B  
USE GROUP: E



**BUILDING ELEVATION**



**LOCATION MAP**

**DESIGN CODES:**  
INTERNATIONAL BUILDING CODE/2018/ NJ EDITION  
INTERNATIONAL MECHANICAL CODE/2018  
INTERNATIONAL FUEL GAS CODE/2018  
NATIONAL STANDARD PLUMBING CODE/2018  
ASHRAE 90.1-2016 ENERGY STANDARD  
NATIONAL ELECTRICAL CODE(NFPA 70)/2017  
INTERNATIONAL FIRE CODE/2018  
ELEVATOR SUBCODE (NJAC 5:23-12):  
AMERICAN SOCIETY OF MECHANICAL ENGINEERS (ASME)  
BARRIER FREE SUBCODE:ICC/ANSI A117.1-2009  
N.J. REHAB CODE NJAC 5:23-6, NJUCC, SUBCHAPTER 6, 2018  
NJ UCC BULLETIN 00-3: PUBLIC SCHOOLS-FACILITY PLANNING STANDARDS & UCC ENHANCEMENTS

**ENVIRONMENTAL CONSULTANT:**  
ARCADIS U.S., INC.  
10 FRIENDS LANE, SUITE 200, NEWTOWN, PA 18940  
PHONE: 267-685-1711 FAX: 267-685-1801

**CONSTRUCTION MANAGER:**  
REMINGTON & VERNICK ENGINEERS  
232 KINGS HIGHWAY EAST, HADDONFIELD, NJ 08033  
PHONE: 856-795-9595 FAX: 856-795-1882

**CIVIL, MECHANICAL, PLUMBING,  
ELECTRICAL ENGINEER:**  
REMINGTON & VERNICK ENGINEERS  
232 KINGS HIGHWAY EAST, HADDONFIELD, NJ 08033  
PHONE: 856-795-9595 FAX: 856-795-1882

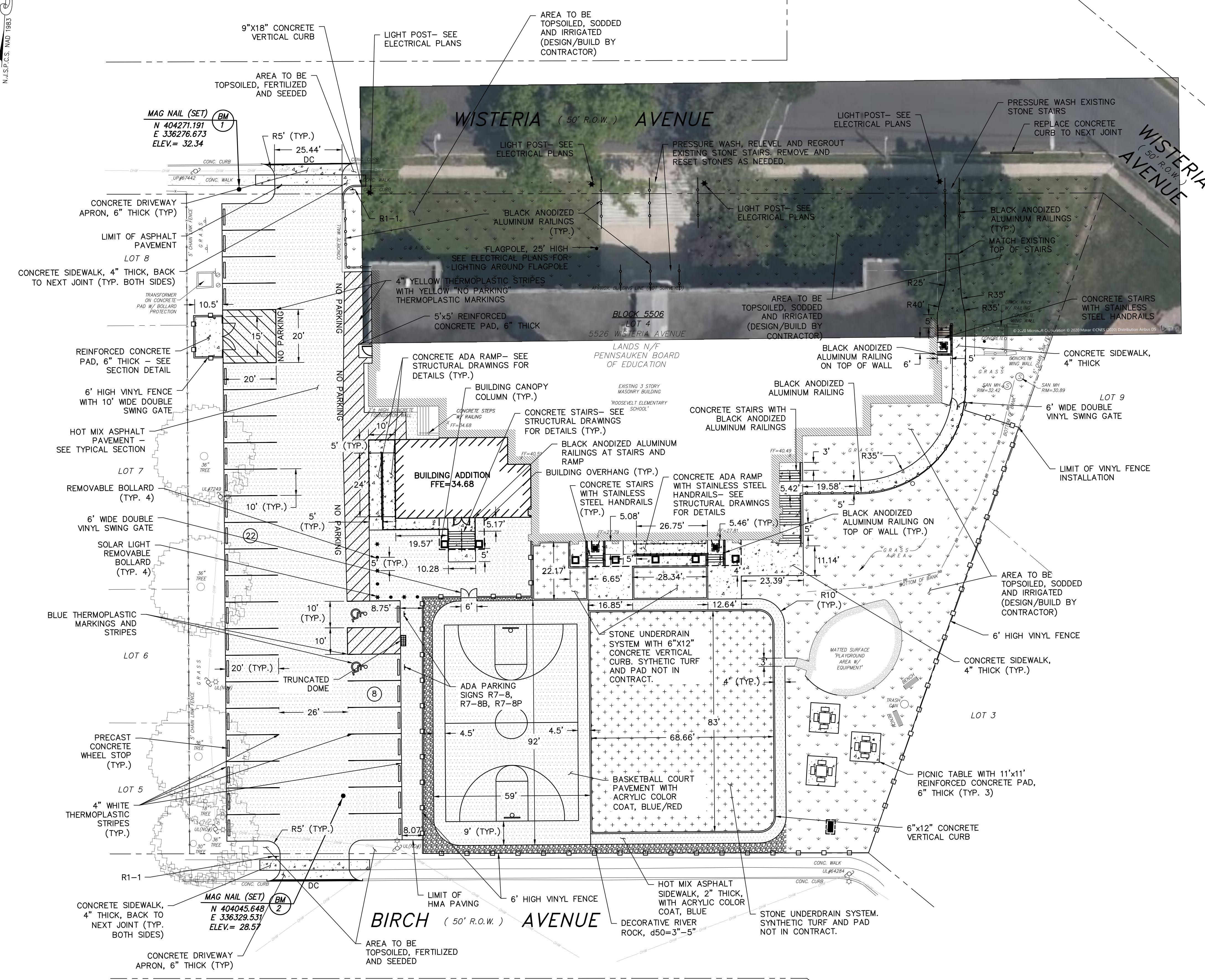
**Garrison Architects**  
A Professional Corporation of Architects and Planners  
713 CREEK ROAD, BELLMAWR, NJ 08031 (856) 396-6200

No.	INDEX OF DRAWINGS	No.	INDEX OF DRAWINGS
	COVER SHEET & DRAWING INDEX		COVER SHEET & DRAWING INDEX
<b>CIVIL</b>		<b>MECHANICAL</b>	
C.0	LEGEND & NOTES	M-1.0	MECHANICAL COVER SHEET
C.1	EXISTING TOPOGRAPHIC CONDITIONS PLAN	M-1.1	MECHANICAL DEMOLITION BASEMENT FLOOR PLAN
C.2	DEMOLITION PLAN	M-1.2	MECHANICAL DEMOLITION FIRST FLOOR PLAN
C.3	SITE PLAN	M-1.3	MECHANICAL DEMOLITION SECOND FLOOR PLAN
C.4	GRADING & UTILITY PLAN	M-1.4	MECHANICAL DEMOLITION ROOF PLAN
C.5	SOIL EROSION & SEDIMENT CONTROL PLAN	M-1.5	MECHANICAL DEMOLITION ENLARGED BOILER ROOM PLANS
C.6	SOIL EROSION & SEDIMENT CONTROL NOTES & DETAILS	M-2.1	MECHANICAL BASEMENT FLOOR PLAN
C.7	CONSTRUCTION DETAILS	M-2.2	MECHANICAL FIRST FLOOR PLAN
C.8	CONSTRUCTION DETAILS	M-2.3	MECHANICAL SECOND FLOOR PLAN
		M-2.4	MECHANICAL ROOF PLAN
		M-2.5	MECHANICAL ENLARGED BOILER ROOM PLAN
<b>ARCHITECTURAL</b>		M-4.1	MECHANICAL DETAILS
D1.1	EXISTING/DEMO BASEMENT FLOOR PLAN	M-4.2	MECHANICAL DETAILS
D1.2	EXISTING/DEMO FIRST FLOOR PLAN	M-4.3	MECHANICAL DETAILS
D1.3	EXISTING/DEMO SECOND FLOOR PLAN	M-4.4	MECHANICAL DETAILS
D1.4	EXISTING/DEMO ROOF PLAN	M-4.5	MECHANICAL HEATING HOT WATER PIPING SYSTEM DISTRIBUTION FLOW DIAGRAM
A-1.1	BASEMENT EGRESS PLAN	M-5.1	MECHANICAL SCHEDULES
A-1.2	FIRST FLOOR EGRESS PLAN	M-5.2	MECHANICAL SCHEDULES
A-1.3	SECOND FLOOR EGRESS PLAN		
A-2.1	BASEMENT FLOOR PLAN	<b>PLUMBING</b>	
A-2.2	FIRST FLOOR PLAN	P-1.1	PLUMBING DEMOLITION BASEMENT FLOOR PLAN
A-2.3	SECOND FLOOR PLAN	P-1.2	PLUMBING DEMOLITION FIRST FLOOR PLAN
A-2.4	ENLARGED TOILET PLANS	P-1.3	PLUMBING DEMOLITION SECOND FLOOR PLAN
A-2.5	ROOF PLAN & PHOTO SHEET	P-1.4	PLUMBING DEMOLITION ROOF PLAN
A-2.6	NOTES AND SCHEDULES	P-1.5	PLUMBING ENLARGED DEMOLITION BOILER ROOM PLAN
A-2.7	ROOF DETAIL SHEET	P-2.1	PLUMBING SANITARY PIPING BASEMENT FLOOR PLAN
A-2.8	ROOF DETAIL SHEET	P-2.2	PLUMBING SANITARY PIPING FIRST FLOOR PLAN
A-3.1	BUILDING ELEVATIONS I	P-2.3	PLUMBING SANITARY PIPING SECOND FLOOR PLAN
A-3.2	BUILDING ELEVATIONS II	P-2.4	PLUMBING ENLARGED SANITARY PIPING FLOOR PLANS
A-3.3	BUILDING ELEVATIONS III	P-3.1	PLUMBING UTILITY PIPING BASEMENT FLOOR PLAN
A-4.1	BUILDING SECTIONS	P-3.2	PLUMBING UTILITY PIPING FIRST FLOOR PLAN
A-4.2	BUILDING SECTIONS	P-3.3	PLUMBING UTILITY PIPING SECOND FLOOR PLAN
A-4.3	WALL SECTIONS	P-3.4	PLUMBING UTILITY PIPING ROOF PLAN
A-4.4	WALL SECTIONS	P-3.5	PLUMBING ENLARGED UTILITY PIPING FLOOR PLANS
A-5.1	DOOR SCHEDULE	P-3.6	PLUMBING ENLARGED UTILITY PIPING BOILER ROOM PLAN
A-5.2	DOOR DETAIL SHEET	P-4.1	PLUMBING SANITARY PIPING RISER DIAGRAM
A-5.3	DOOR DETAIL SHEET	P-4.2	PLUMBING UTILITY PIPING RISER DIAGRAM
A-5.4	DOOR DETAIL SHEET	P-4.3	PLUMBING NATURAL FUEL GAS PIPING RISER DIAGRAM
A-5.5	WINDOW TYPES	P-5.1	PLUMBING DETAILS
A-5.6	WINDOW TYPES	P-6.1	PLUMBING SCHEDULES
A-5.7	WINDOW DETAILS		
A-5.8	WINDOW TYPES		
A-5.9	ROOM FINISH SCHEDULE	<b>ELECTRICAL</b>	
A-5.10	ROOM FINISH SCHEDULE	E-1.0	ELECTRICAL COVER SHEET
A-5.11	WALL TYPES I	E-1.1	ELECTRICAL DEMOLITION BASEMENT FLOOR PLAN
A-5.12	WALL TYPES II	E-1.2	ELECTRICAL DEMOLITION FIRST FLOOR PLAN
A-6.1	REFLECTED CEILING PLAN (BASEMENT)	E-1.3	ELECTRICAL DEMOLITION SECOND FLOOR PLAN
A-6.2	REFLECTED CEILING PLAN (FIRST FLOOR)	E-1.4	ELECTRICAL DEMOLITION ROOF PLAN
A-6.3	REFLECTED CEILING PLAN (SECOND FLOOR)	E-2.1	ELECTRICAL LIGHTING BASEMENT FLOOR PLAN
A-7.1	STAIR & LIFT DETAIL SHEET	E-2.1A	ELECTRICAL LIGHTING BASEMENT FLOOR PLAN (REFERENCE ONLY)
A-7.2	STAIR RAILING DETAIL SHEET	E-2.2	ELECTRICAL LIGHTING FIRST FLOOR PLAN
A-8.1	FURNITURE PLAN (BASEMENT)	E-2.2A	ELECTRICAL LIGHTING FIRST FLOOR PLAN (REFERENCE ONLY)
A-8.2	FURNITURE PLAN (FIRST FLOOR)	E-2.3	ELECTRICAL LIGHTING SECOND FLOOR PLAN
A-8.3	FURNITURE PLAN (SECOND FLOOR)	E-2.3A	ELECTRICAL LIGHTING SECOND FLOOR PLAN (REFERENCE ONLY)
A-8.4	FURNITURE LIST & ELEVATIONS	E-2.4A	ELECTRICAL EXTERIOR LIGHTING PLAN (REFERENCE ONLY)
A-9.1	MILLWORK	E-3.1	ELECTRICAL POWER BASEMENT FLOOR PLAN
A-10.1	ENLARGED KITCHEN PLAN	E-3.2	ELECTRICAL POWER FIRST FLOOR PLAN
		E-3.3	ELECTRICAL POWER SECOND FLOOR PLAN
<b>STRUCTURAL</b>		E-3.4	ELECTRICAL HVAC POWER BASEMENT FLOOR PLAN
S-1	STRUCTURAL COVER SHEET	E-3.5	ELECTRICAL HVAC POWER FIRST FLOOR PLAN
S-2	PILE PLAN	E-3.6	ELECTRICAL HVAC POWER SECOND FLOOR PLAN
S-3	FOUNDATION PLAN	E-3.7	ELECTRICAL HVAC POWER ROOF PLAN
S-4	BASEMENT TOP SLAB AND LINTEL PLAN	E-4.1	ELECTRICAL SYSTEMS BASEMENT FLOOR PLAN
S-5	LOW ROOF FRAMING PLAN	E-4.2	ELECTRICAL SYSTEMS FIRST FLOOR PLAN
S-6	TOP SLAB, LINTEL AND FRAMING PLANS - FIRST FLOOR	E-4.3	ELECTRICAL SYSTEMS SECOND FLOOR PLAN
S-7	TOP SLAB, LINTEL AND FRAMING PLANS - SECOND FLOOR	E-5.1	ELECTRICAL SINGLE LINE DIAGRAMS
S-8	HIGH ROOF FRAMING PLAN	E-5.2	ELECTRICAL FIRE ALARM RISER DIAGRAMS
S-9	ROOFTOP UNIT STEEL DUNNAGE PLAN	E-5.3	ELECTRICAL DETAILS
S-10	STAIRS AND RAMP PLANS, SECTIONS AND DETAILS	E-5.4	ELECTRICAL DETAILS
S-11	SECTIONS AND DETAILS	E-6.1	ELECTRICAL SCHEDULES
S-12	SECTIONS AND DETAILS	E-6.2	ELECTRICAL SCHEDULES





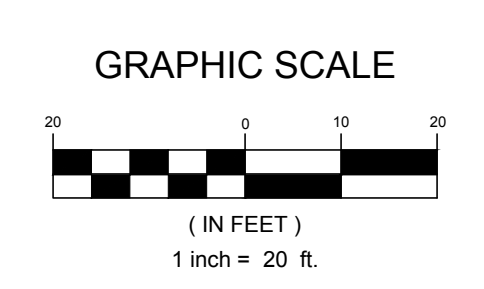




**PROPOSED SURFACE LEGEND**

HOT-MIX ASPHALT	
CONCRETE	
TOPSOIL, FERTILIZE, IRRIGATE & SOD	
STONE UNDERDRAIN	

**PLAN**  
SCALE: 1"=20'



**SITE PLAN NOTES**

1. ACCESSIBLE PARKING SPACES, SIGNAGE, RAMPS, LOADING AISLES/AREAS AND ROUTES SHALL BE IN ACCORDANCE WITH THE NEW JERSEY SIGNAGE AND ROUTES ACT ARCHITECTURAL BARRIER REMOVAL AND COMPLIANCE MANUAL. ACCESSIBLE RAMPS SHALL BE PROVIDED WITH DETECTABLE WARNINGS.
2. TRAFFIC SIGNS SHALL BE SETBACK A MINIMUM OF 2 FEET FROM ROADWAY CURB SO EDGE OF SIGN DOES NOT ENCRUSCH INTO ROADWAY.
3. PROVIDE PARKING STRIPING AND PAVEMENT MARKINGS AS SHOWN ON PLANS. STRIPING AND PAVEMENT MARKINGS SHALL BE IN ACCORDANCE WITH NEW JERSEY DOT STANDARDS AND THE MANUAL FOR UNIFORM TRAFFIC CONTROL DEVICES FOR STREETS AND HIGHWAYS.
4. ALL EXTERIOR GROUND AREAS NOT OCCUPIED BY BUILDINGS, STRUCTURES AND PAVING (EXCEPT AREAS OUTSIDE OF THE DISTURBED AREA) SHALL BE TOPSOILED AND SEEDED UNLESS OTHERWISE NOTED.
5. ALL SODDED AREAS TO BE IRRIGATED (DESIGN/BUILD BY CONTRACTOR).
6. IRRIGATION DESIGN/INSTALLATION SHALL BE PERFORMED BY A NJDEP CERTIFIED LANDSCAPE IRRIGATION CONTRACTOR.

PLANS WHICH DO NOT BEAR AN EMBOSSED SEAL ARE NOT VALID.

ALL DOCUMENTS PREPARED BY REMINGTON & VERNICK ENGINEERS AND AFFILIATES ARE INSTRUMENTS OF SERVICE IN RESPECT OF THE PROJECT. THEY ARE NOT INTENDED OR REPRESENTED TO BE SUITABLE FOR REUSE ON ANY OTHER PROJECT. ANY REUSE WITHOUT WRITTEN VERIFICATION OR ADAPTATION BY REMINGTON & VERNICK ENGINEERS AND AFFILIATES FOR THE SPECIFIC PROJECT REUSED WILL BE AT OWNERS SOLE RISK AND WITHOUT LIABILITY OR LEGAL EXPOSURE TO REMINGTON & VERNICK ENGINEERS AND AFFILIATES. OWNER SHALL INDEMNIFY AND HOLD HARMLESS REMINGTON & VERNICK ENGINEERS AND AFFILIATES FROM ALL CLAIMS, DAMAGES, LOSSES AND EXPENSES ARISING OUT OF OR RESULTING THEREFROM.

NO.	REVISION	DATE	BY	CHK

**SITE PLAN**

PENNSAUKEN BOARD OF EDUCATION  
ROOSEVELT STEM SCHOOL ADDITION AND RENOVATIONS  
5526 WISTERIA AVENUE, PENNSAUKEN, NEW JERSEY 08109  
PENNSAUKEN TOWNSHIP, CAMDEN COUNTY, NEW JERSEY

DRAWN BY:	CHECKED BY:	SCALE:
JDH	JDH	AS NOTED
DATE:	SHEET NO.:	
09-04-2018		
JOB NO.:		
MP038K049		

**ISSUED FOR BID: 11-13-2020**



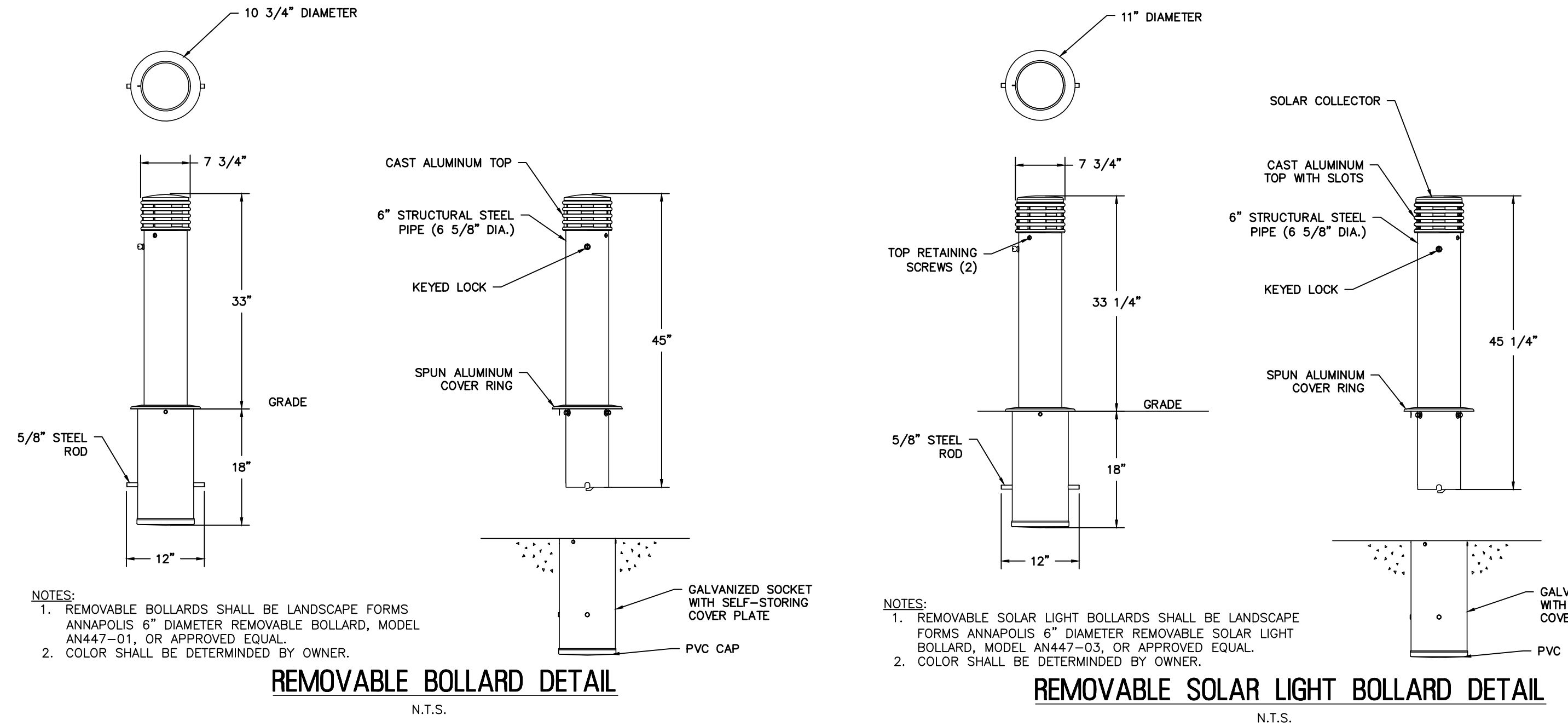








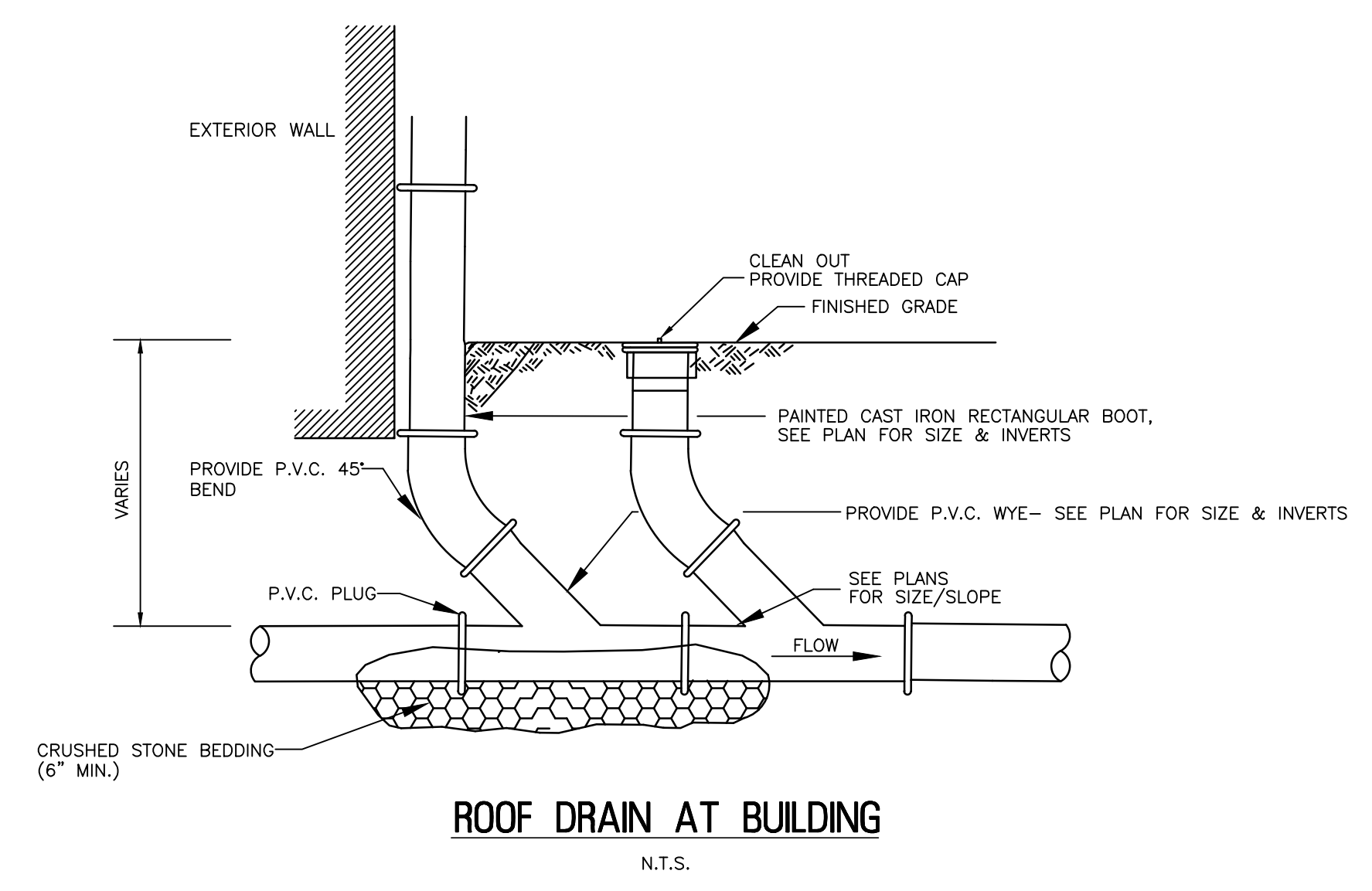
DATE:  
**JESSICA D. HAUBER**  
NJ PROFESSIONAL ENGINEER LIC. NO. 51487



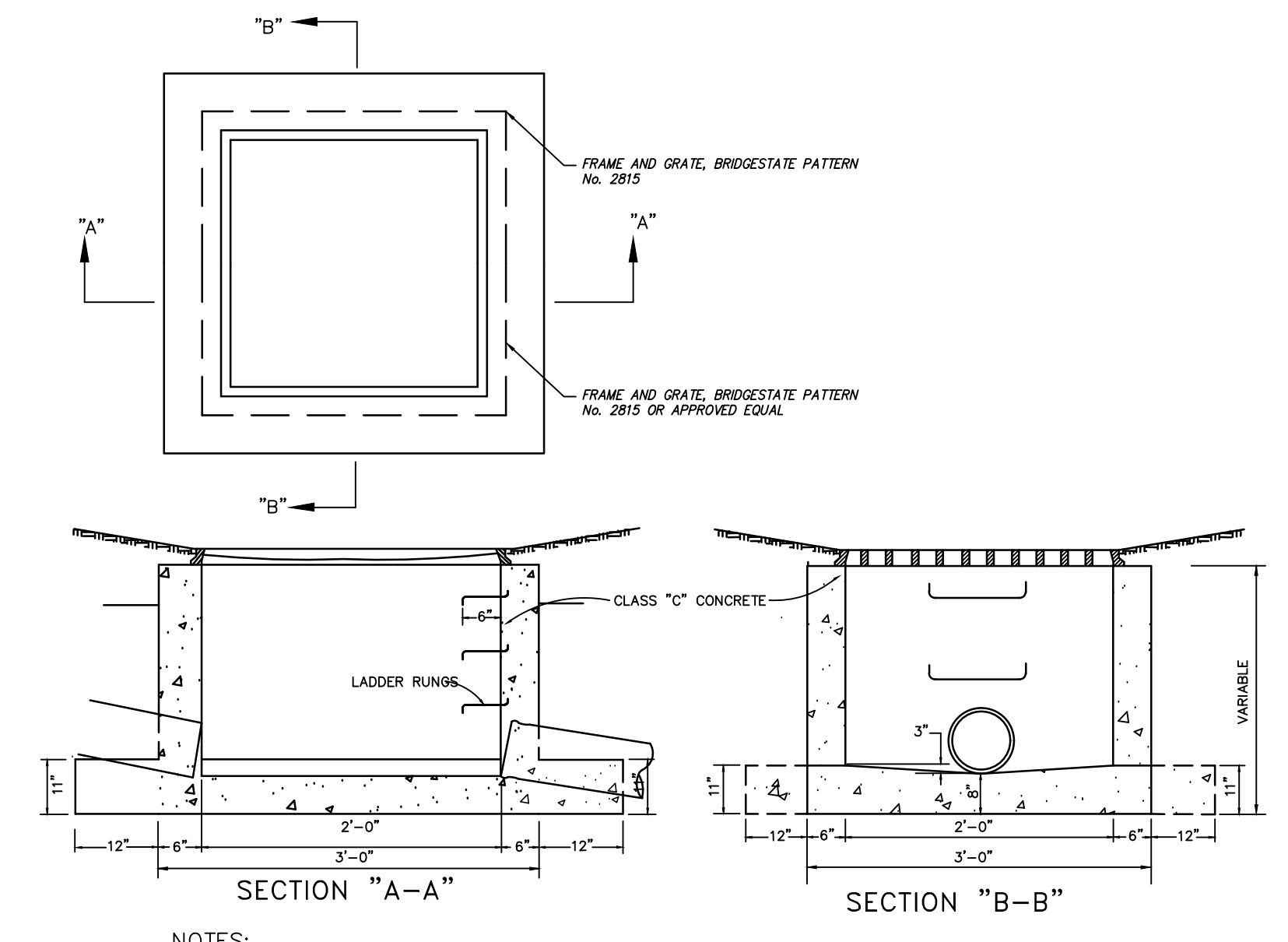
**REMOVABLE BOLLARD DETAIL**  
N.T.S.

**REMOVABLE SOLAR LIGHT BOLLARD DETAIL**  
N.T.S.

NOTES:  
1. REMOVABLE BOLLARDS SHALL BE LANDSCAPE FORMS ANAPOLIS 6\"/>

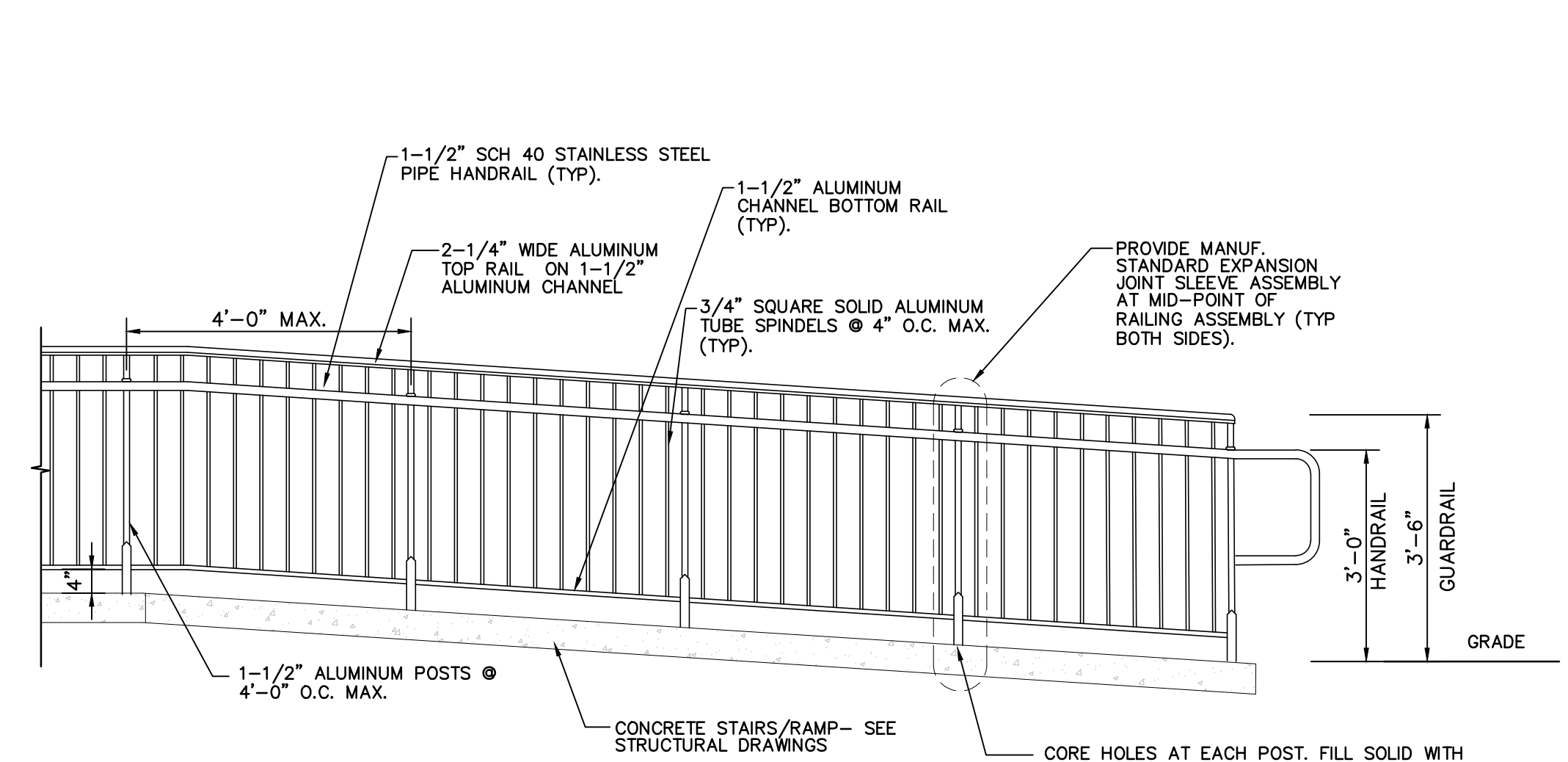


**ROOF DRAIN AT BUILDING**  
N.T.S.



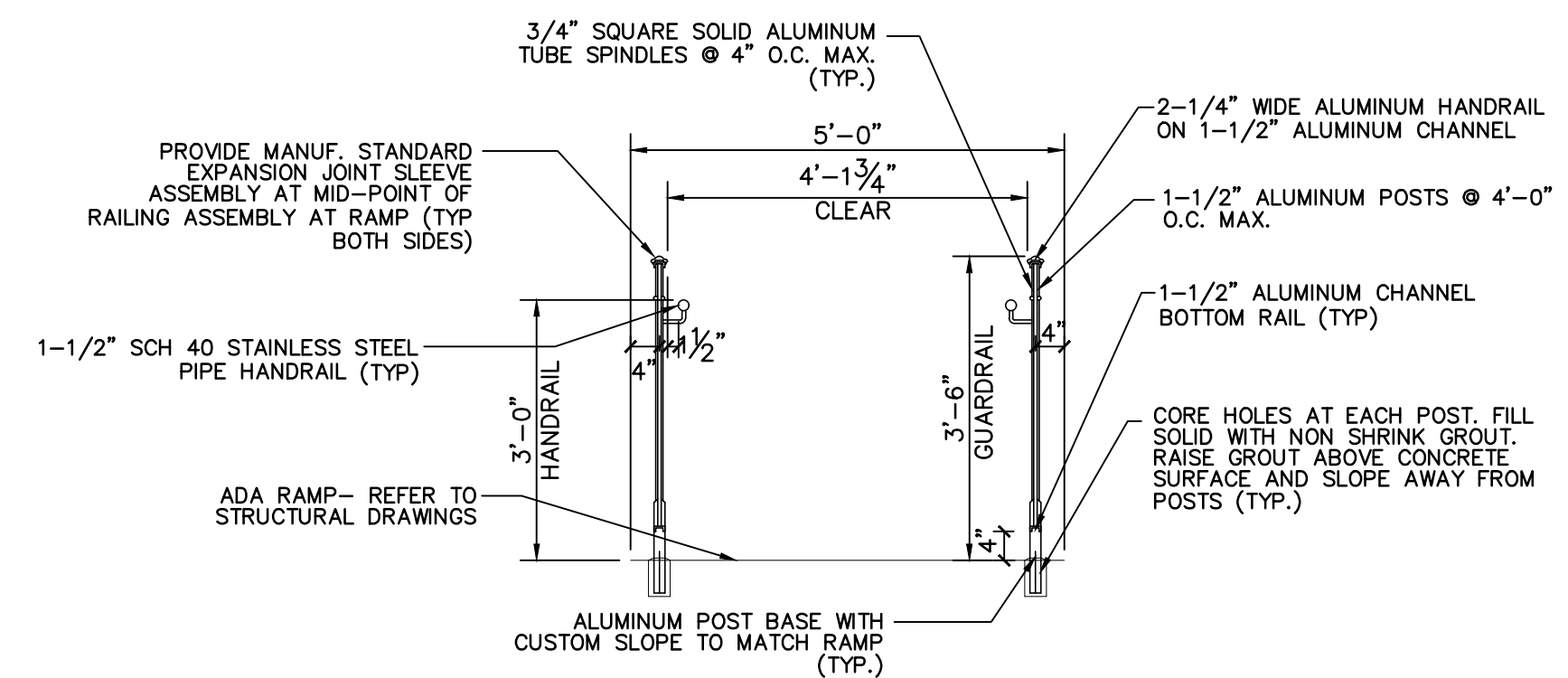
**2' X 2' INLET DETAIL**  
N.T.S.

NOTES:  
1. INVERTS TO BE ELIMINATED IN BOTTOM OF TERMINAL INLETS. BOTTOM SHALL BE DISHED AND SLOPED TOWARDS THE OUTLET PIPE AT THE RATE OF 2\"/>

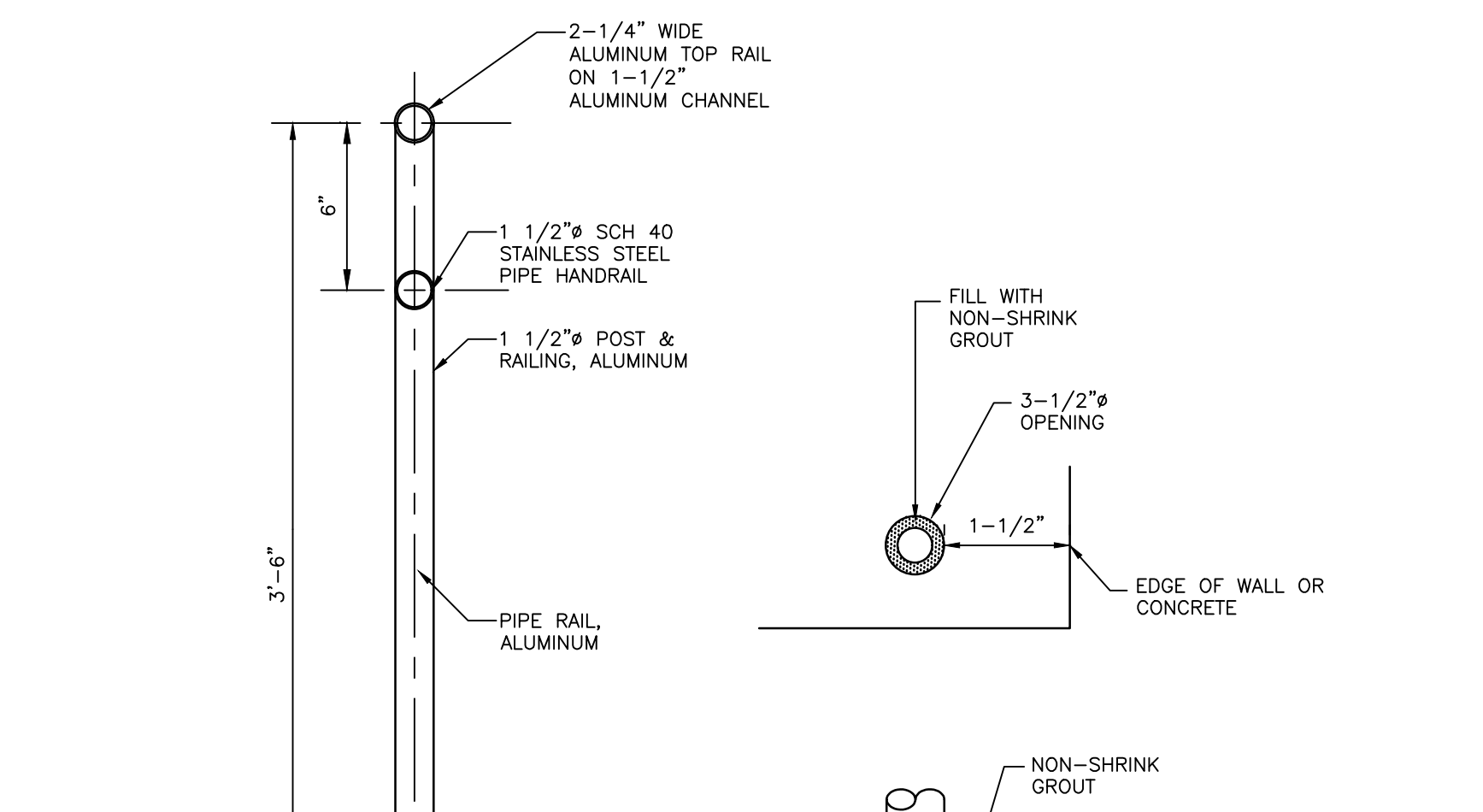


**ALUMINUM RAILING DETAIL**  
N.T.S.

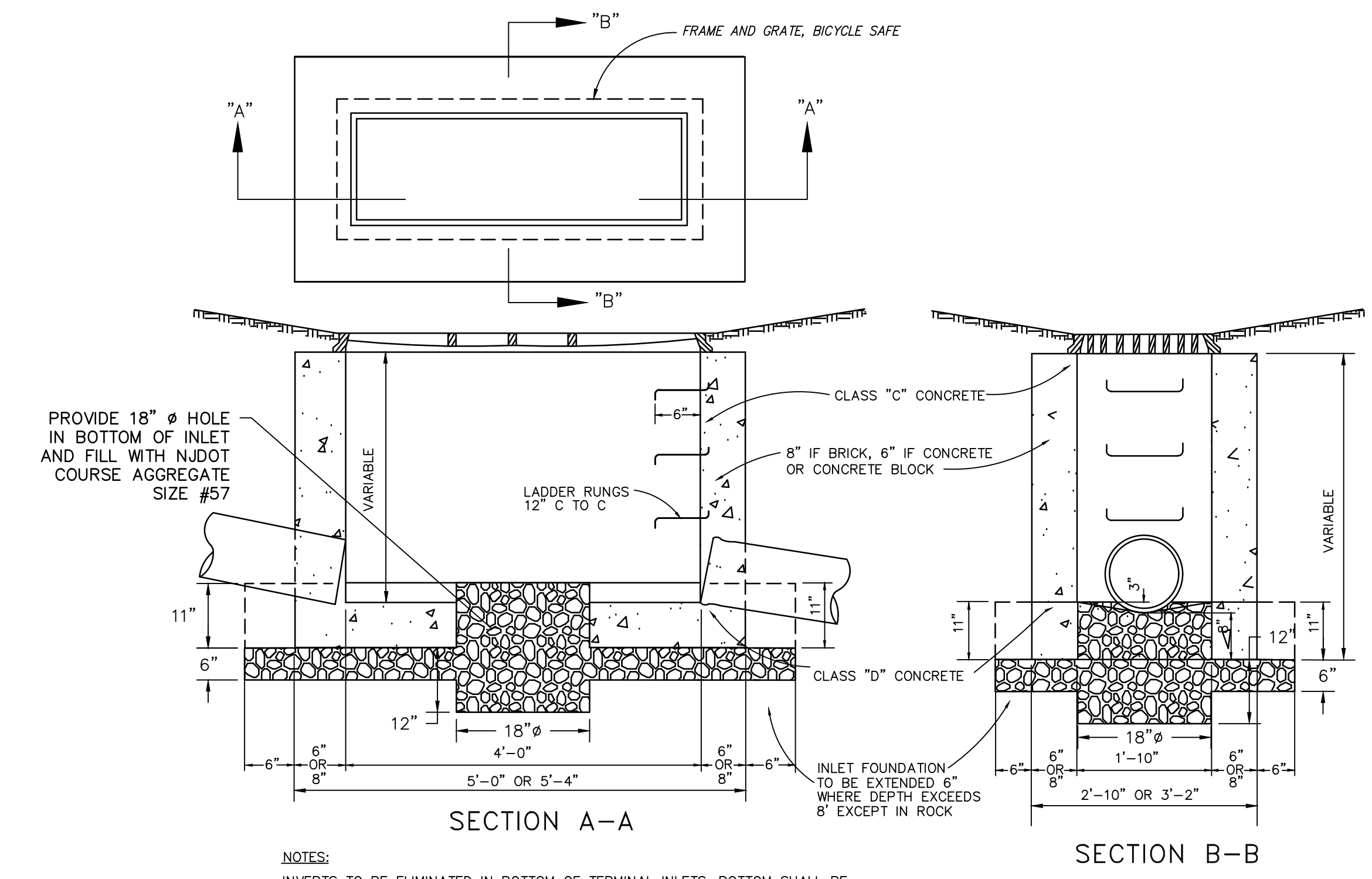
NOTES:  
1. ALUMINUM RAILING ASSEMBLY SHALL BE AS MANUFACTURED BY JULIUS BLUM & CO., INC. OR APPROVED EQUAL, AND MEET THE DESIGN INTENT AS DETAILED.  
2. CONTRACTOR SHALL PROVIDE ASSEMBLY COMPLYING WITH IRC 2018 (N.J. EDITION).  
3. ALL RAILINGS SHALL RESIST A LINEAR LOAD OF 50 POUNDS PER LINEAL FOOT AND A CONCENTRATED LOAD OF 200 POUNDS AT ANY POINT ALONG THE RAILING ASSEMBLY (PER SECTION 4.5.1 OF ASSC 7).  
4. ALL RAILING MATERIALS ARE TO BE BLACK ALUMINUM ANODIZED OR FINISHED WITH TWO COATS FLUOROPOLYMER RESIN COATINGS (KYNAR OR EQUAL).



**ALUMINUM RAILING AT ADA RAMP**  
N.T.S.

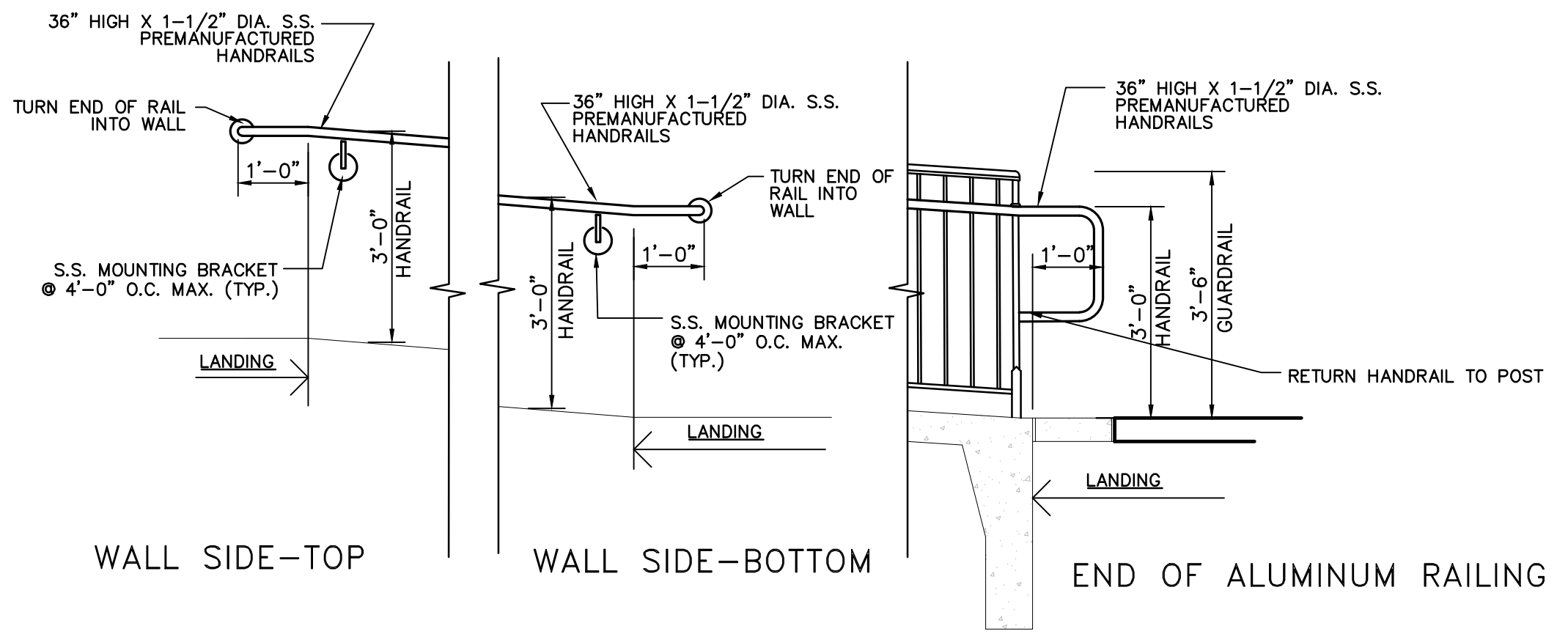


**PIPE RAILING AND POST MOUNTING**  
N.T.S.

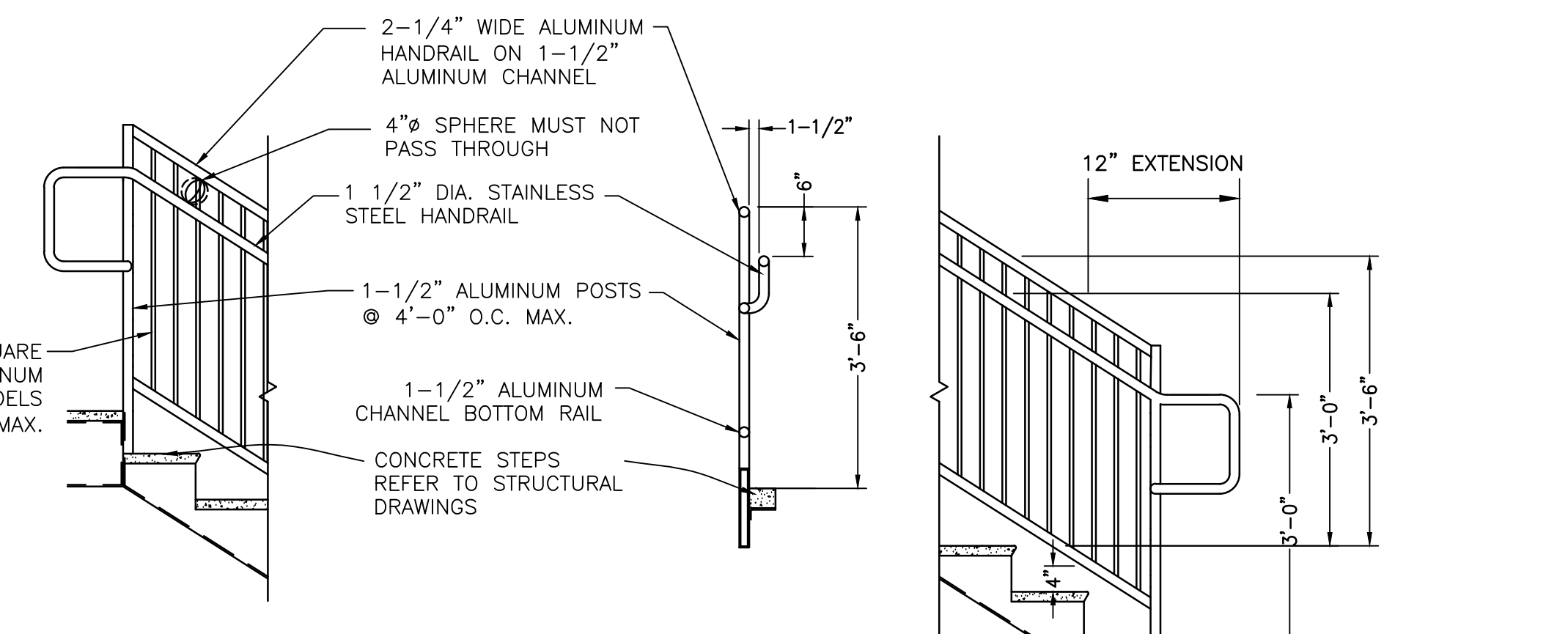


**TYPE "A" MODIFIED INLET DETAIL**  
N.T.S.

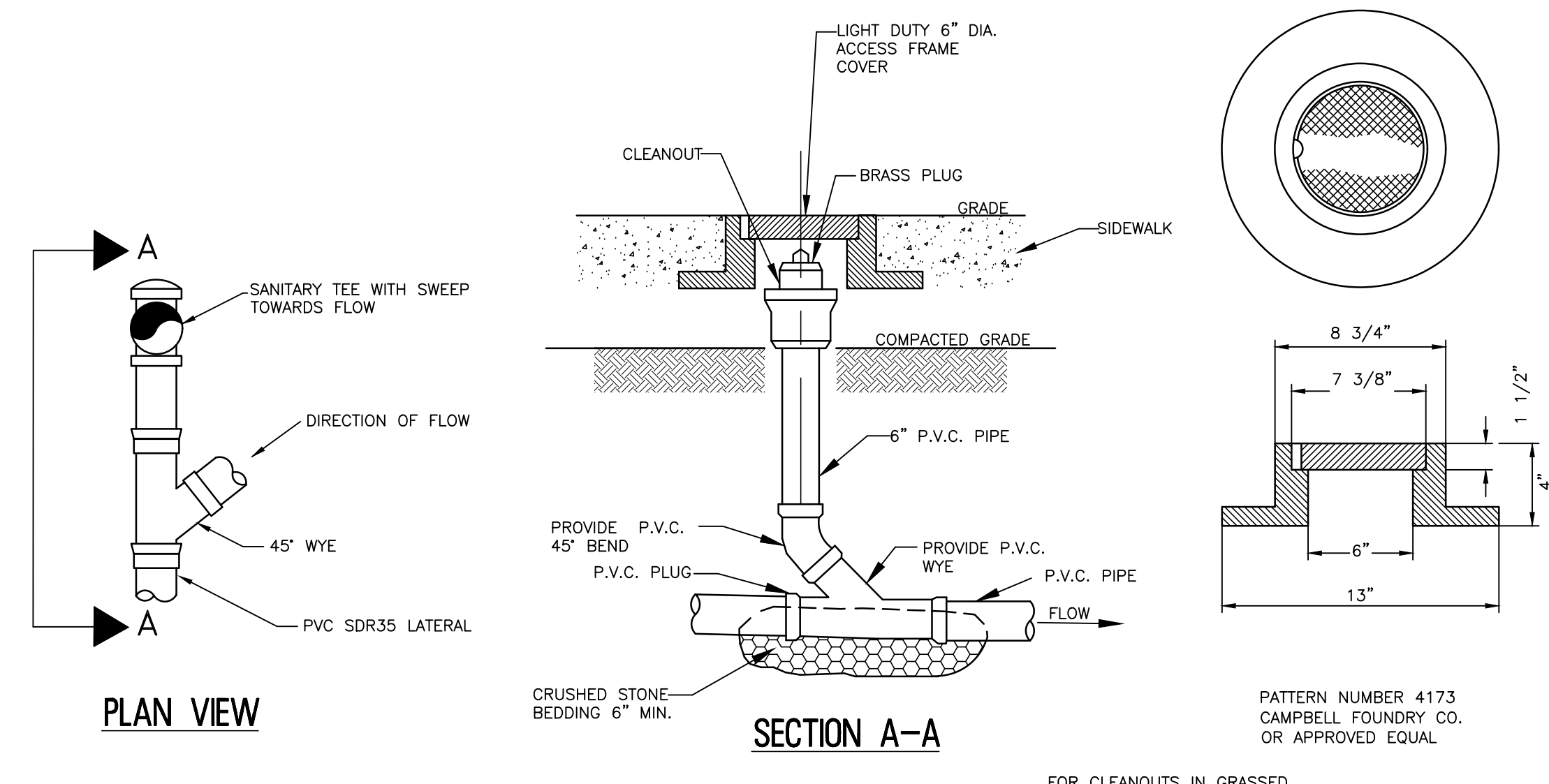
NOTES:  
INVERTS TO BE ELIMINATED IN BOTTOM OF TERMINAL INLETS. BOTTOM SHALL BE DISHED AND SLOPED TOWARDS THE OUTLET PIPE AT THE RATE OF 2\"/>



**HANDRAIL TERMINATION DETAILS**  
N.T.S.

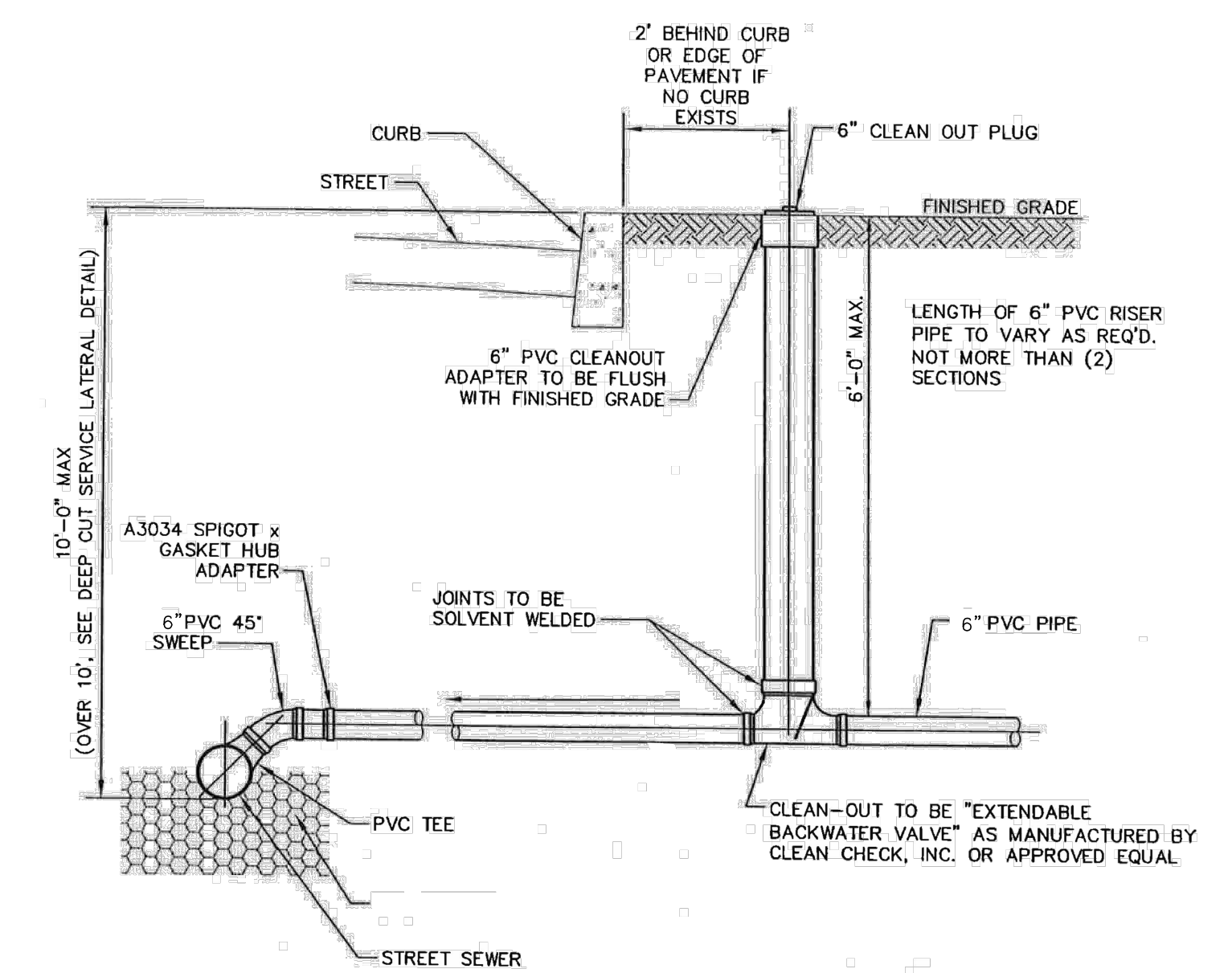


**ALUMINUM RAILING AT STAIR**  
N.T.S.



**SANITARY LATERAL/ROOF DRAIN CLEANOUT DETAIL**  
N.T.S.

FOR CLEANOUTS IN GRASSED AREAS, TERMINATE VERTICAL PIPE AT GRADE LEVEL AND PROVIDE THREADED CAP.



**SEWER LATERAL CONNECTION DETAIL**  
N.T.S.

PLANS WHICH DO NOT BEAR AN EMBOSSED SEAL ARE NOT VALID.

ALL DOCUMENTS PREPARED BY REMINGTON & VERNICK ENGINEERS AND AFFILIATES ARE INSTRUMENTS OF SERVICE IN RESPECT OF THE PROJECT. THEY ARE NOT INTENDED OR REPRESENTED TO BE SUITABLE FOR REUSE BY OWNER OR OTHER PROJECT. ANY REUSE WITHOUT WRITTEN VERIFICATION OR ADAPTATION BY REMINGTON & VERNICK ENGINEERS AND AFFILIATES FOR THE SPECIFIC PURPOSE INTENDED WILL BE AT OWNERS SOLE RISK AND WITHOUT LIABILITY OR LEGAL EXPOSURE TO REMINGTON & VERNICK ENGINEERS AND AFFILIATES. AND OWNER SHALL INDEMNIFY AND HOLD HARMLESS REMINGTON & VERNICK ENGINEERS AND AFFILIATES FROM ALL CLAIMS, DAMAGES, LOSSES AND EXPENSES ARISING OUT OF OR RESULTING THEREFROM.

NO.	DATE	BY	CHK

**CONSTRUCTION DETAILS**

PENNSAUKEN BOARD OF EDUCATION  
ROOSEVELT STEEL SCHOOL ADDITION AND RENOVATIONS  
5526 WISTERIA AVENUE, PENNSAUKEN, NEW JERSEY 08109  
PENNSAUKEN TOWNSHIP  
CAMDEN COUNTY  
NEW JERSEY

DRAWN BY	CHECKED BY	SCALE
JDH	JFS	AS NOTED
DATE	SHEET NO.	TOTAL SHEETS
09-04-2018	C-8	
PROJECT NO. MP038K049		

ISSUED FOR BID: 11-13-2020