

CODE REVIEW:

CERTIFICATE:



SPIEZLE ARCHITECTURAL GROUP INC. 121 MARKET STREET CAMDEN, NJ 08102 PHONE: (856) 974 7666

SIGNATURE: THOMAS S. PERINO 21A01925400 SCOTT E. DONNE 21A01974400 STEVEN L. ICHNE 21A01791000 STEVEN G. SEIGEL 21A01944200 ANGELO ALBERTO 21A01946700 JOHN F. WRIGHT 21A01784200 SPIEZLE ARCHITECTURAL GROUP, INC. 21A02005300

SEAL:

BID SET - 06/25/2024

PROJECT:

HADDONFIELD POLICE STATION

1 WALNUT STREET, HADDONFIELD, NJ 08033

FOR

CAMDEN COUNTY IMPROVEMENT AUTHORITY

520 MARKET STREET, 6TH FLOOR, CAMDEN, NEW JERSEY 08102

FOR CODE REVIEW: 02/23/24

REVISIONS:

Table with 2 columns: REVISION NAME, DATE

FOR BID: 06/25/2024

DRAWING TITLE:

PLUMBING NOTES, LEGEND & SCHEDULES

COMMISSION NUMBER:

23M014

DO NOT SCALE THE DRAWINGS

DRAWING NUMBER:

P0.1

PLUMBING FIXTURE SCHEDULE table with columns: TAG NO., FIXTURE, DESCRIPTION, CW, HW, DRAIN, SPECIFICATIONS

(ADA) HANDICAPPED ACCESSIBLE FIXTURE NOTES REFER TO ARCHITECTURAL DETAILS FOR MOUNTING HEIGHTS

PUMP SCHEDULE

PUMP SCHEDULE table with columns: SYMBOL, LOCATION, SERVICE, GPM, HD FT, MOTOR HP, ELECTRICAL (VOLTS/Ø, AMPS, WATTS), NOTES, MANUFACTURER

NOTES: 1. 24" x 60" FIBERGLASS BASIN 2. PIVOT PRO SERIES CONTROL PANEL 3. 1/4" THICK SIMPLEX BLACK EPOXY STEEL COVER 4. VARIABLE LEVEL FLOAT CONTROL

WATER HEATER SCHEDULE

WATER HEATER SCHEDULE table with columns: SYMBOL, LOCATION, RECOVERY GPH @ 67°F RISE, GPH, ENERGY FACTOR, TEMPERATURE IN °F, OUT °F, HEATING SOURCE (GAS MBH, ELECTRIC VOLTS/Ø, WATTS), MANUFACTURER

NOTES & ACCESSORIES: 1. MANUFACTURERS CONDENSATE NEUTRALIZING KIT. 2. MANUFACTURERS RECIRCULATION VALVE. 3. MANUFACTURERS WALL CAP / VENT KIT. 4. MANUFACTURERS RELIEF KIT

SYMBOL LEGEND

SYMBOL LEGEND table listing various plumbing symbols and their corresponding components like GATE VALVE, BALL VALVE, CHECK VALVE, etc.

GENERAL NOTES

- 1. THESE DRAWINGS ARE DIAGRAMMATIC IN NATURE... 2. THE CONTRACTOR WILL VISIT THE SITE... 3. ALL WORK SHALL BE IN ACCORDANCE WITH THE N.J. UNIFORM CONSTRUCTION CODE... 4. THE PLUMBING CONTRACTOR SHALL PROVIDE SUBMITTALS... 5. QUESTIONS REGARDING THESE DRAWINGS... 6. PROVIDE STAINLESS STEEL, LOCKABLE ACCESS PANELS...

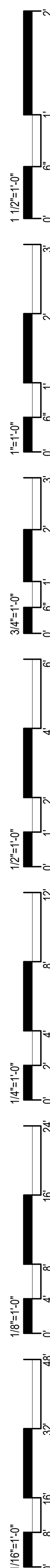
DEMOLITION NOTE

PLUMBING CONTRACTOR SHALL BE RESPONSIBLE FOR SHUTTING OFF AND CAPPING THE EXISTING DOMESTIC WATER SERVICE AND GAS SERVICE PRIOR TO THE START OF DEMOLITION.

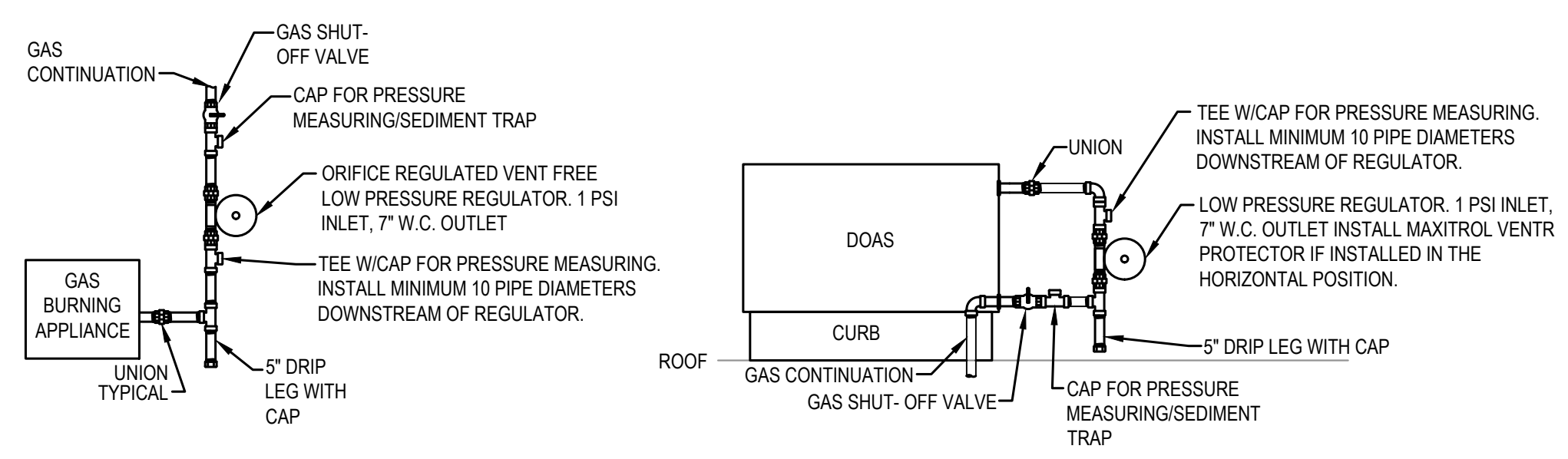
PETER M. HONEYFORD PROFESSIONAL ENGINEER NJ LICENSE NUMBER 33443 EXP: 04/30/2026

NJ COA NUMBER 24GA27940200

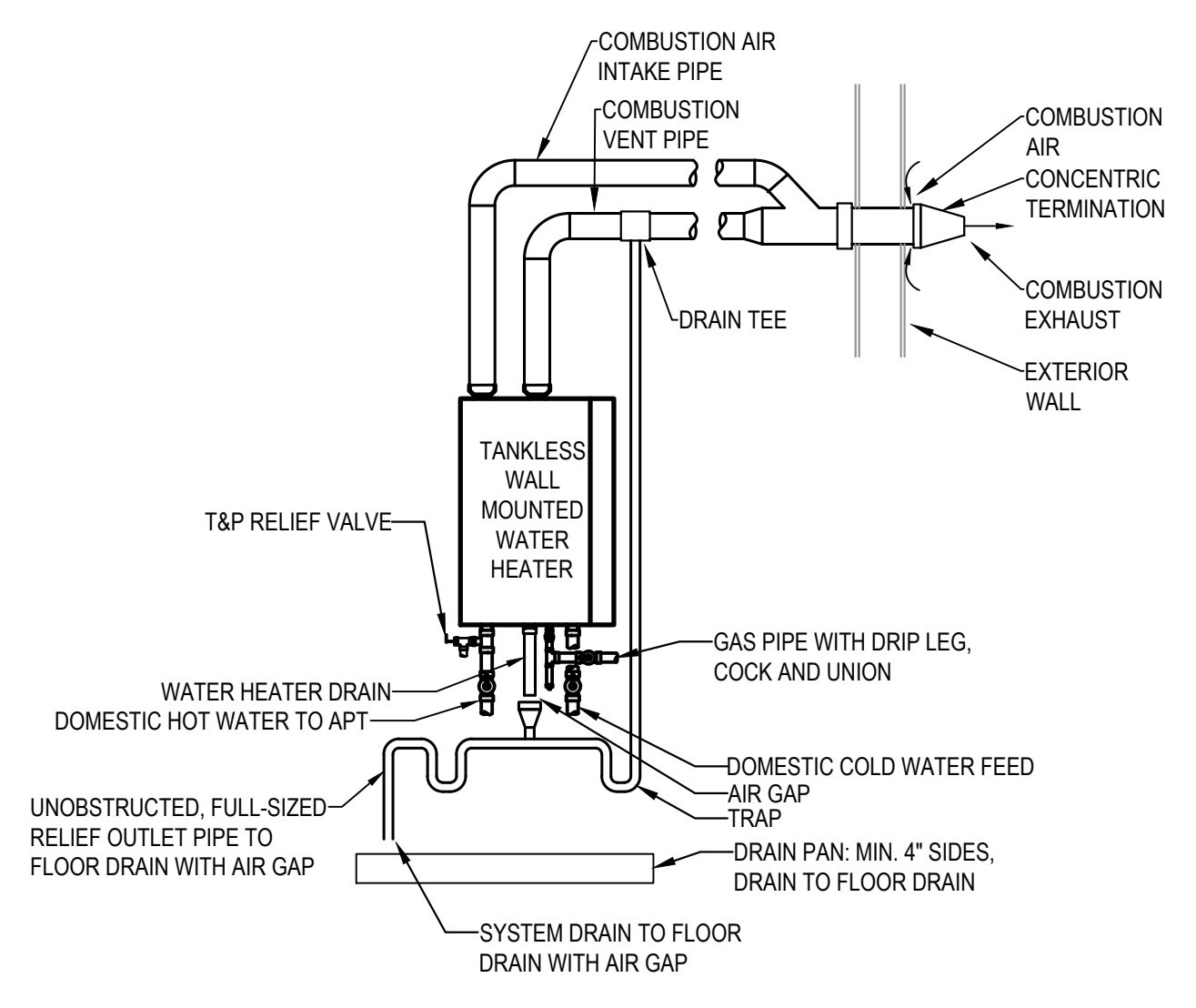
PMH ASSOCIATES, INC. MECHANICAL, ELECTRICAL & FIRE PROTECTION ENGINEERING 1217 N CHURCH ST. STE B MOORESTOWN, NJ 08057 (856) 273-0554 - FAX (856) 273-7701 - PMH@PMH-ASSOCIATES.COM



THIS DRAWING IS FORWARDED TO BE PRINTED AT 24"x36"



1 GAS CONNECTION DETAIL
NOT TO SCALE



2 GAS-FIRED TANKLESS WATER HEATER DETAIL
NOT TO SCALE

PETER M. HONEYFORD
PROFESSIONAL ENGINEER
NJ LICENSE NUMBER 33443
EXP: 04/30/2026

NJ COA NUMBER 24GA27940200

PMH ASSOCIATES, INC.
MECHANICAL, ELECTRICAL & FIRE PROTECTION ENGINEERING
1217 N CHURCH ST. STE B MOORESTOWN, NJ 08057
(856) 273-0554 • FAX: (856) 273-7701 • PMH@PMH-ASSOCIATES.COM

EIC: PC: PM: DD:

CODE REVIEW:

CERTIFICATE:

spiezie

SPIEZLE ARCHITECTURAL GROUP INC.
121 MARKET STREET
CAMDEN, NJ 08102
PHONE: (856) 974 7666

SIGNATURE:
THOMAS S. PERRINO 21A01925400
SCOTT E. DOMINE 21A01914400
STEVEN L. LIONE 21A01171000
STEVEN G. SEGEL 21A01944200
ANGELO ALBERTO 21A01946700
JOHN F. WRIGHT 21A01784200
SPIEZLE ARCHITECTURAL GROUP, INC. 21A020053000

SEAL:

BID SET - 06/25/2024

PROJECT:

HADDONFIELD POLICE STATION
1 WALNUT STREET, HADDONFIELD, NJ 08033
FOR
CAMDEN COUNTY IMPROVEMENT AUTHORITY
520 MARKET STREET, 6TH FLOOR, CAMDEN, NEW JERSEY 08102

FOR CODE REVIEW: 02/23/24

REVISIONS:

REVISION NAME	DATE

FOR BID: 06/25/2024

DRAWING TITLE:
PLUMBING DETAILS

COMMISSION NUMBER:
23M014

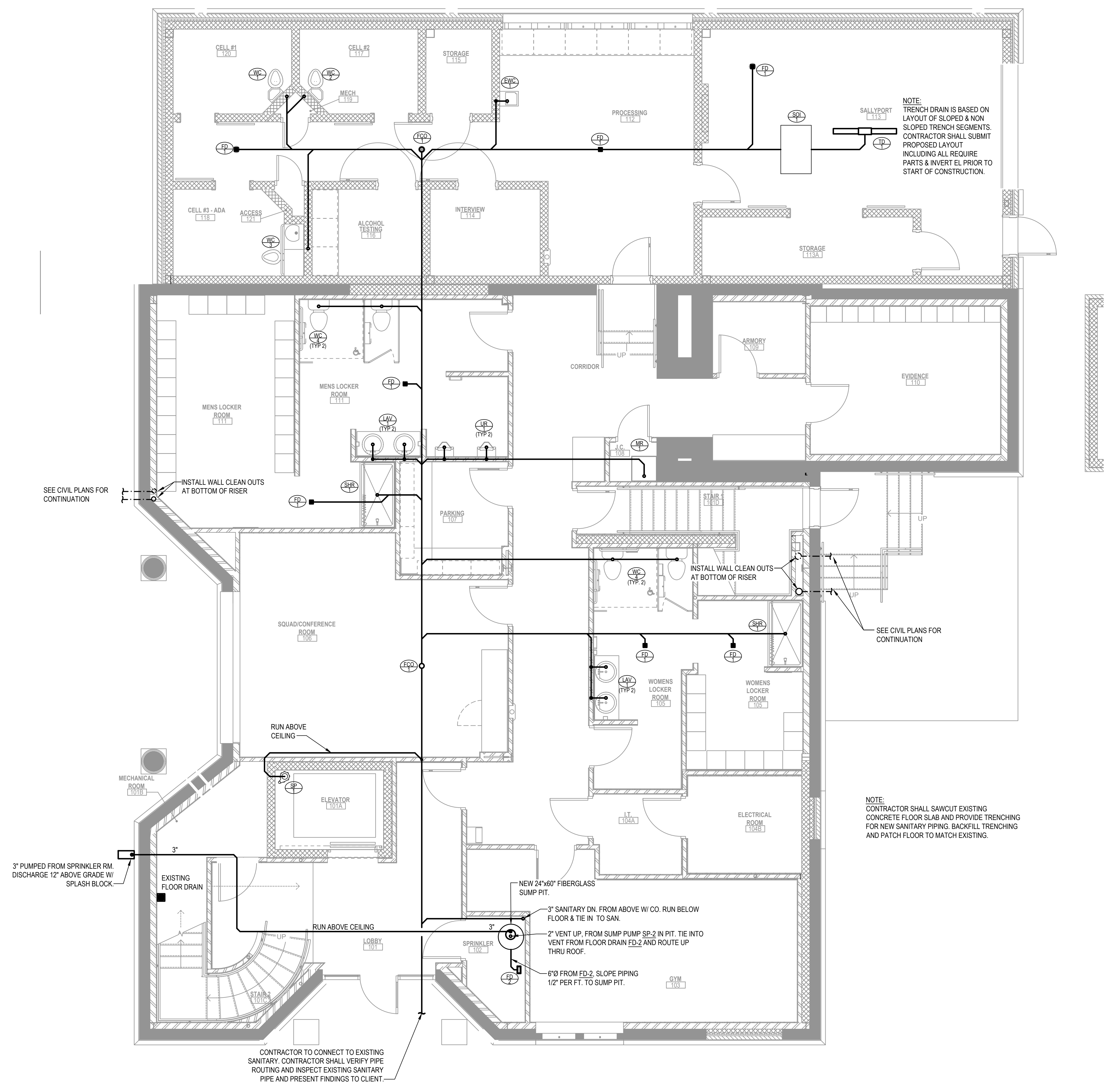
DO NOT SCALE THE DRAWINGS

DRAWING NUMBER:
P0.2

1 1/2"=1'-0"
1"=1'-0"
3/4"=1'-0"
1/2"=1'-0"
3/8"=1'-0"
1/4"=1'-0"
1/8"=1'-0"
1/16"=1'-0"

THIS DRAWING IS FORMATTED TO BE PRINTED AT 24"x36"

1 1/2"=1'-0"
 1"=1'-0"
 3/4"=1'-0"
 1/2"=1'-0"
 1/4"=1'-0"
 1/8"=1'-0"



1 SANITARY FIRST FLOOR PLAN
 SCALE: 1/4"=1'-0"

PETER M. HONEYFORD
 PROFESSIONAL ENGINEER
 NJ LICENSE NUMBER 33443
 EXP: 04/30/2026

NJ COA NUMBER 24GA27940200

PMH ASSOCIATES, INC.
 MECHANICAL, ELECTRICAL & FIRE PROTECTION ENGINEERING
 1217 N CHURCH ST. STE B MOORESTOWN, NJ 08057
 (856) 273-0554 • FAX (856) 273-7701 • PMH@PMH-ASSOCIATES.COM

EIC: PC: PM: DD:

CODE REVIEW:

CERTIFICATE:

spiezie

SPIEZLE ARCHITECTURAL GROUP INC.
 121 MARKET STREET
 CAMDEN, NJ 08102
 PHONE: (856) 974 7666

SIGNATURE:
 THOMAS S. PERRINO 21A01925400
 SCOTT E. DONNE 21A01974400
 STEVEN L. LIONE 21A0177000
 STEVEN G. SEIGEL 21A01944200
 ANGELO ALBERTO 21A01940700
 JOHN F. WRIGHT 21A01784200
 SPIEZLE ARCHITECTURAL GROUP, INC. 21A02005300

SEAL:

BID SET - 06/25/2024

PROJECT:

HADDONFIELD POLICE STATION
 1 WALNUT STREET, HADDONFIELD, NJ 08033
 FOR
CAMDEN COUNTY IMPROVEMENT AUTHORITY
 520 MARKET STREET, 6TH FLOOR, CAMDEN, NEW JERSEY 08102

FOR CODE REVIEW: 02/23/24

REVISIONS:

REVISION NAME	DATE
A	

FOR BID: 06/25/2024

DRAWING TITLE:
FIRST FLOOR SANITARY PLAN

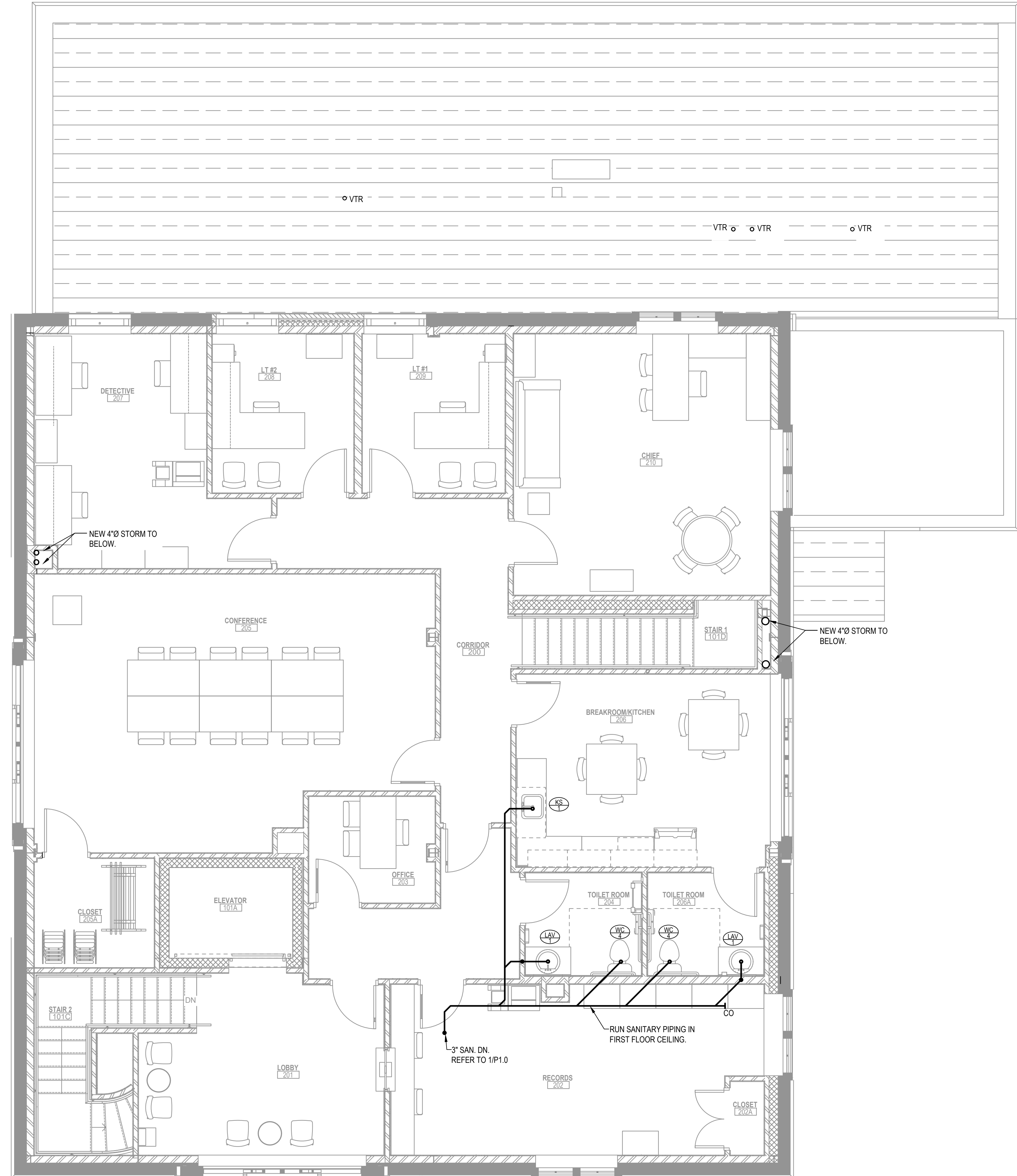
COMMISSION NUMBER:
23M014

DO NOT SCALE THE DRAWINGS

DRAWING NUMBER:
P1.0

THIS DRAWING IS FORMATTED TO BE PRINTED AT 24"x36"

1 1/2"=1'-0"
 1"=1'-0"
 3/4"=1'-0"
 1/2"=1'-0"
 1/4"=1'-0"
 1/8"=1'-0"
 1/16"=1'-0"



1 SANITARY SECOND FLOOR PLAN
 SCALE: 1/4"=1'-0"

PETER M. HONEYFORD
 PROFESSIONAL ENGINEER
 NJ LICENSE NUMBER 33443
 EXP: 04/30/2026

NJ COA NUMBER 24GA27840200

PMH ASSOCIATES, INC.
 MECHANICAL, ELECTRICAL & FIRE PROTECTION ENGINEERING
 1217 N CHURCH ST. STE B MOORESTOWN, NJ 08057
 (856) 273-0554 • FAX: (856) 273-7701 • PMH@PMH-ASSOCIATES.COM

EIC: PC: PM: DD:

CODE REVIEW:

CERTIFICATE:

spiezie

SPIEZLE ARCHITECTURAL GROUP INC.
 121 MARKET STREET
 CAMDEN, NJ 08102
 PHONE: (856) 974 7666

SIGNATURE:
 THOMAS S. PERRINO 21A01925400
 SCOTT E. DOMNE 21A01974400
 STEVEN L. LIONE 21A01770200
 STEVEN G. SEGEL 21A01944200
 ANGELO ALBERTO 21A01946700
 JOHN F. WRIGHT 21A01784200
 SPIEZLE ARCHITECTURAL GROUP, INC. 21A020053000

SEAL:

BID SET - 06/25/2024

PROJECT:

HADDONFIELD POLICE STATION
 1 WALNUT STREET, HADDONFIELD, NJ 08033
 FOR
CAMDEN COUNTY IMPROVEMENT AUTHORITY
 520 MARKET STREET, 6TH FLOOR, CAMDEN, NEW JERSEY 08102

FOR CODE REVIEW: 02/23/24

REVISIONS:

REVISION NAME	DATE

FOR BID: 06/25/2024

DRAWING TITLE:

SECOND FLOOR SANITARY PLAN

COMMISSION NUMBER:
23M014

DO NOT SCALE THE DRAWINGS

DRAWING NUMBER:
P1.1

THIS DRAWING IS FORMATTED TO BE PRINTED AT 24"x36"

CODE REVIEW:

CERTIFICATE:



SPIEZLE ARCHITECTURAL GROUP INC.
121 MARKET STREET
CAMDEN, NJ 08102
PHONE: (856) 974 7666

SIGNATURE:
THOMAS S. PERRINO 21A01925400
SCOTT E. DOMNE 21A01974400
STEVEN LIGONE 21A01710100
STEVEN G. SEGEL 21A01944200
ANGELO ALBERTO 21A01946700
JOHN F. WRIGHT 21A01784200
SPIEZLE ARCHITECTURAL GROUP, INC. 21A020053000

SEAL:

BID SET - 06/25/2024

PROJECT:

HADDONFIELD POLICE STATION
1 WALNUT STREET, HADDONFIELD, NJ 08033
FOR
CAMDEN COUNTY IMPROVEMENT AUTHORITY
520 MARKET STREET, 6TH FLOOR, CAMDEN, NEW JERSEY 08102

FOR CODE REVIEW: 02/23/24

REVISIONS:	REVISION NAME	DATE
1		

FOR BID: 06/25/2024

DRAWING TITLE:

ROOF PLUMBING PLAN

COMMISSION NUMBER:

23M014

DO NOT SCALE THE DRAWINGS

DRAWING NUMBER:

P1.2

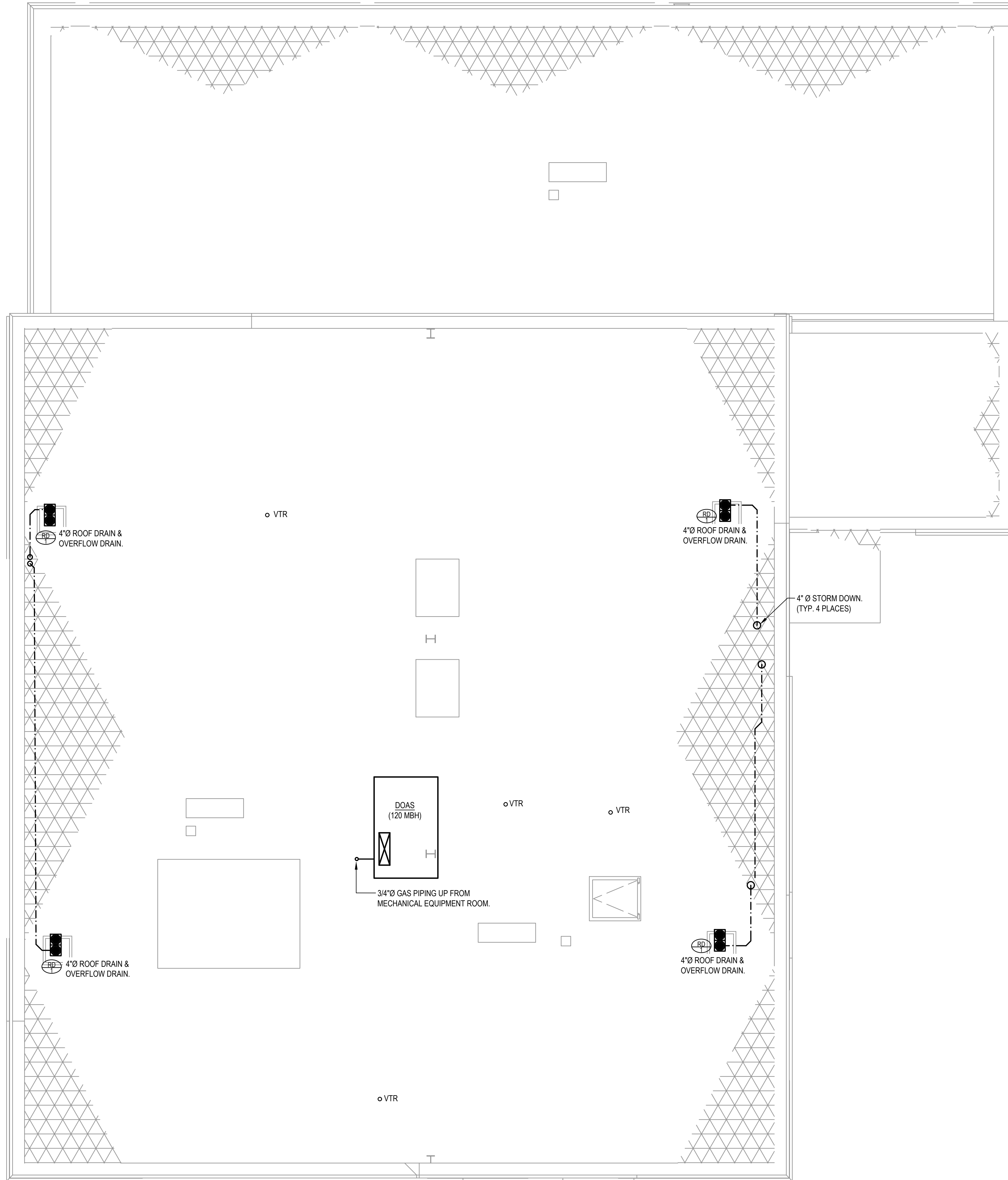
NJ COA NUMBER 24GA27940200

PMH ASSOCIATES, INC.
MECHANICAL, ELECTRICAL & FIRE PROTECTION ENGINEERING
1217 N CHURCH ST. STE B MOORESTOWN, NJ 08057
(856) 273-0554 • FAX: (856) 273-7701 • PMH@PMH-ASSOCIATES.COM

EIC: PC: PM: DD:

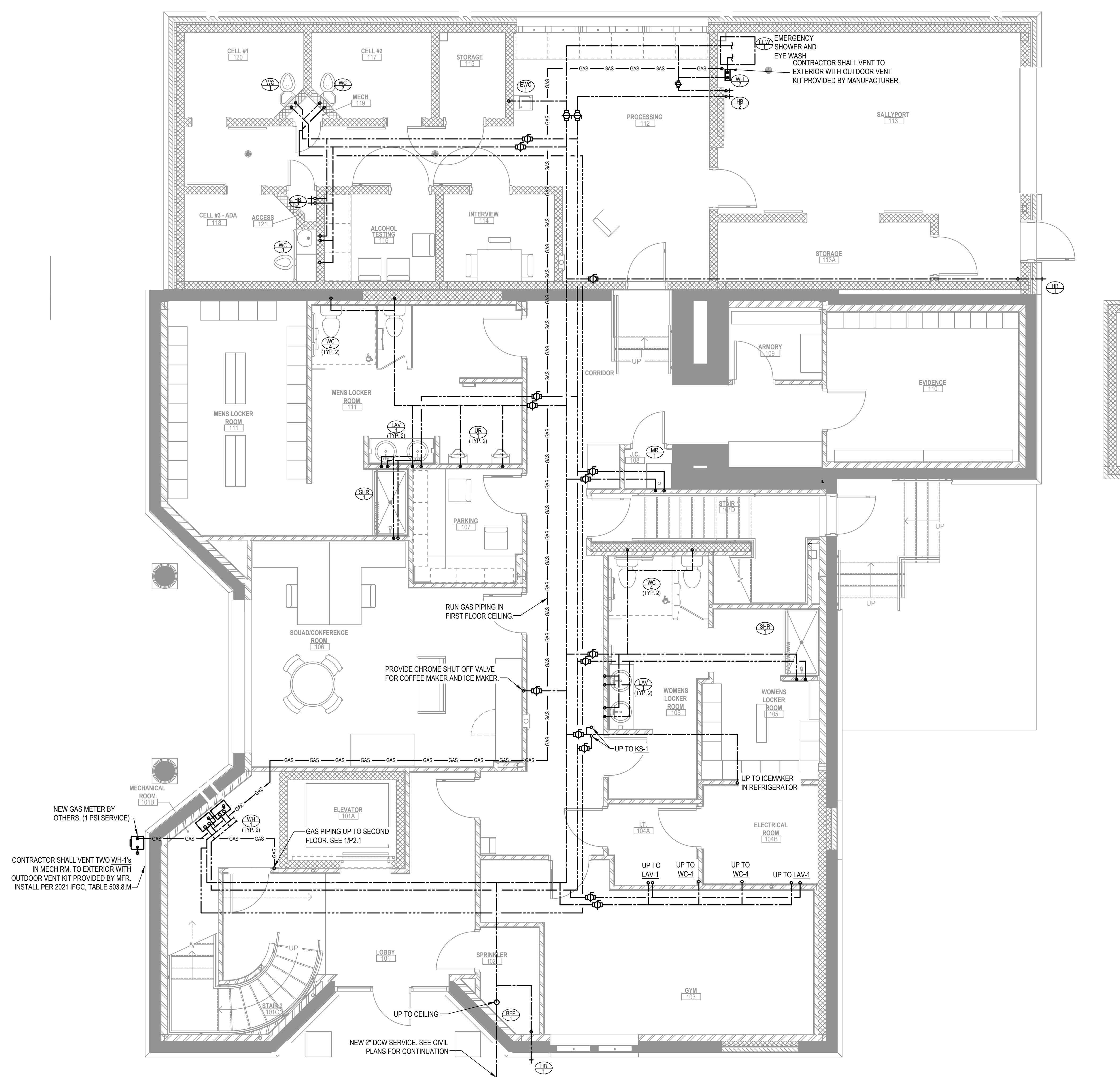
PETER M. HONEYFORD
PROFESSIONAL ENGINEER
NJ LICENSE NUMBER 33443
EXP: 04/30/2026

1 PLUMBING ROOF PLAN
SCALE: 1/4"=1'-0"



1/12"=1'-0"
1/2"=1'-0"
3/16"=1'-0"
1/2"=1'-0"
1/4"=1'-0"
1/8"=1'-0"
1/16"=1'-0"

1 1/2"=1'-0"
 1"=1'-0"
 3/4"=1'-0"
 1/2"=1'-0"
 1/4"=1'-0"
 1/8"=1'-0"



NEW GAS METER BY OTHERS. (1 PSI SERVICE)
 CONTRACTOR SHALL VENT TWO WH-1s IN MECH RM. TO EXTERIOR WITH OUTDOOR VENT KIT PROVIDED BY MFR. INSTALL PER 2021 IFGC, TABLE 503.8.M

RUN GAS PIPING IN FIRST FLOOR CEILING.
 PROVIDE CHROME SHUT OFF VALVE FOR COFFEE MAKER AND ICE MAKER.

EMERGENCY SHOWER AND EYE WASH
 CONTRACTOR SHALL VENT TO EXTERIOR WITH OUTDOOR VENT KIT PROVIDED BY MANUFACTURER.

1 DOMESTIC FIRST FLOOR PLAN
 SCALE: 1/4"=1'-0"

PETER M. HONEYFORD
 PROFESSIONAL ENGINEER
 NJ LICENSE NUMBER 33443
 EXP: 04/30/2026

NJ COA NUMBER 24GA27940200

PMH ASSOCIATES, INC.
 MECHANICAL, ELECTRICAL & FIRE PROTECTION ENGINEERING
 1217 N CHURCH ST. STE B MOORESTOWN, NJ 08057
 (856) 273-0554 • FAX: (856) 273-7701 • PMH@PMH-ASSOCIATES.COM

EIC: PC: PM: DD:

CODE REVIEW:

CERTIFICATE:



SPIEZLE ARCHITECTURAL GROUP INC.
 121 MARKET STREET
 CAMDEN, NJ 08102
 PHONE: (856) 974 7666

SIGNATURE:
 THOMAS S. PERRINO 21A01925400
 SCOTT E. DOMNE 21A01974400
 STEVEN LICONE 21A01770200
 STEVEN G. SEIGEL 21A01944200
 ANGELO ALBERTO 21A01946200
 JOHN F. WRIGHT 21A01784200
 SPIEZLE ARCHITECTURAL GROUP, INC. 21A020053000

SEAL:

BID SET - 06/25/2024

PROJECT:
HADDONFIELD POLICE STATION
 1 WALNUT STREET, HADDONFIELD, NJ 08033
 FOR
CAMDEN COUNTY IMPROVEMENT AUTHORITY
 520 MARKET STREET, 6TH FLOOR, CAMDEN, NEW JERSEY 08102

FOR CODE REVIEW: 02/23/24

REVISIONS:

REVISION NAME	DATE
A	

FOR BID: 06/25/2024

DRAWING TITLE:
FIRST FLOOR DOMESTIC & GAS PLUMBING PLAN

COMMISSION NUMBER:
23M014

DO NOT SCALE THE DRAWINGS

DRAWING NUMBER:
P2.0

THIS DRAWING IS FORMATTED TO BE PRINTED AT 24"x36"

CODE REVIEW:

CERTIFICATE:



SPIEZIE ARCHITECTURAL GROUP INC.
121 MARKET STREET
CAMDEN, NJ 08102
PHONE: (856) 974 7666

SIGNATURE:
THOMAS S. PERRINO 21A01925400
SCOTT E. DOMNE 21A01914400
STEVEN LIONE 21A01917000
STEVEN G. SEGEL 21A01944200
ANGILO ALBERTO 21A01946700
JOHN F. WRIGHT 21A01944200
SPIEZIE ARCHITECTURAL GROUP, INC. 21A020053000

SEAL:

BID SET - 06/25/2024

PROJECT:

HADDONFIELD POLICE STATION
1 WALNUT STREET, HADDONFIELD, NJ 08033
FOR
CAMDEN COUNTY IMPROVEMENT AUTHORITY
520 MARKET STREET, 6TH FLOOR, CAMDEN, NEW JERSEY 08102

FOR CODE REVIEW: 02/23/24

REVISIONS:	REVISION NAME	DATE
1		

FOR BID: 06/25/2024

DRAWING TITLE:
PLUMBING FLOOR PLANS
SECOND FLR. DOM. WATER
& GAS PLAN

COMMISSION NUMBER:
23M014

DO NOT SCALE THE DRAWINGS

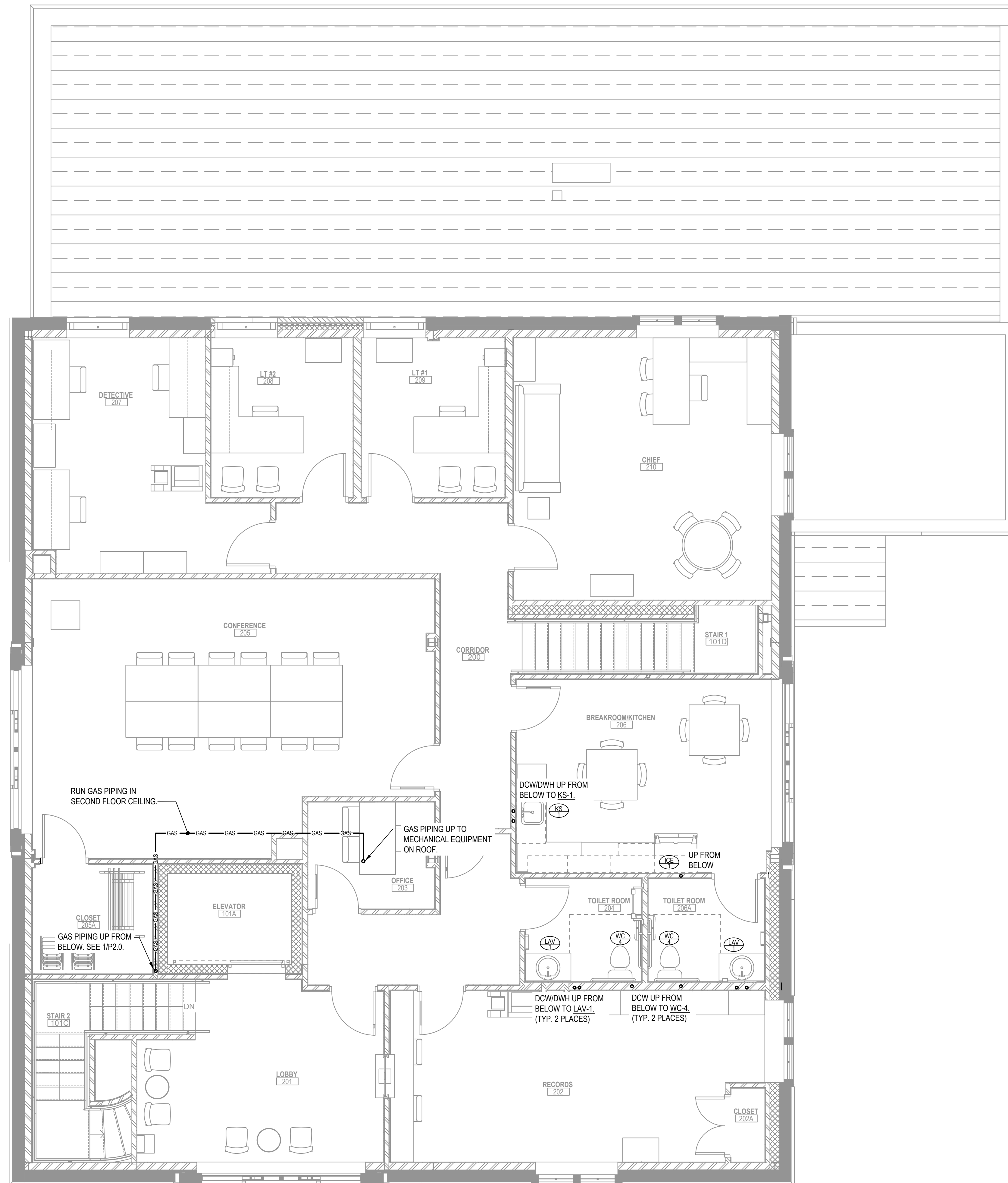
DRAWING NUMBER:
P2.1

PETER M. HONEYFORD
PROFESSIONAL ENGINEER
NJ LICENSE NUMBER 33443
EXP: 04/30/2026

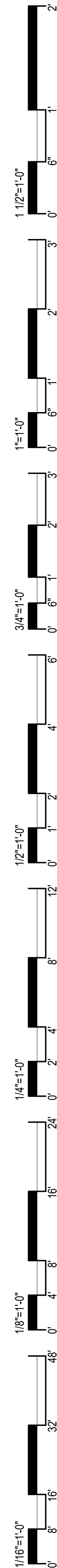
NJ COA NUMBER 24GA27940200

PMH ASSOCIATES, INC.
MECHANICAL, ELECTRICAL & FIRE PROTECTION ENGINEERING
1217 N CHURCH ST. STE B MOORESTOWN, NJ 08057
(856) 273-0554 • FAX: (856) 273-7701 • PMH@PMH-ASSOCIATES.COM

EIC: PC: PM: DD:



1 DOMESTIC SECOND FLOOR PLAN
SCALE: 1/4"=1'-0"



GAS PIPE SIZE BASED UPON ICC IFGC2021 SECTION 402.4 - EQUATION 4-1 AND EQUATION 4-2.

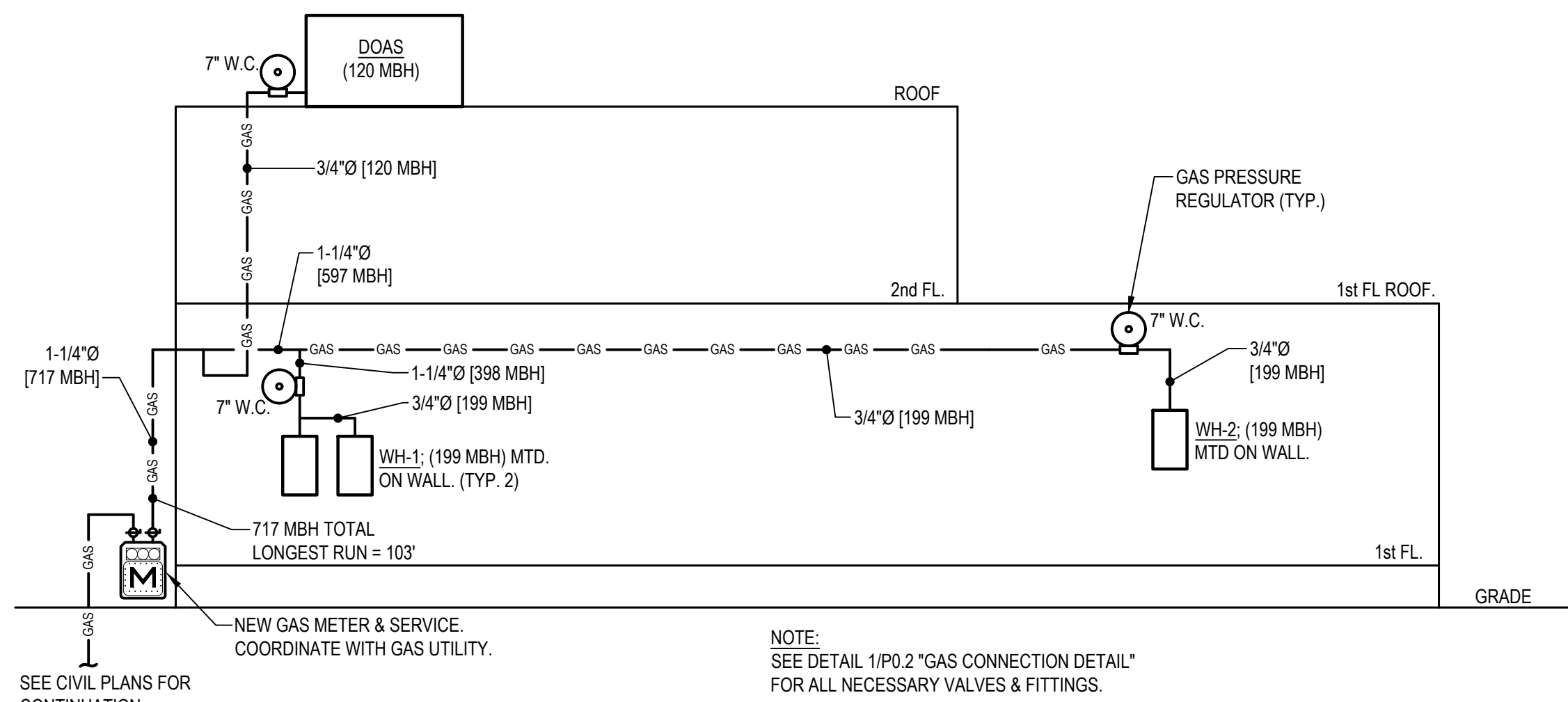
230129 Haddonfield Police HQ
6/7/2024

Gas pipe sizing by formula

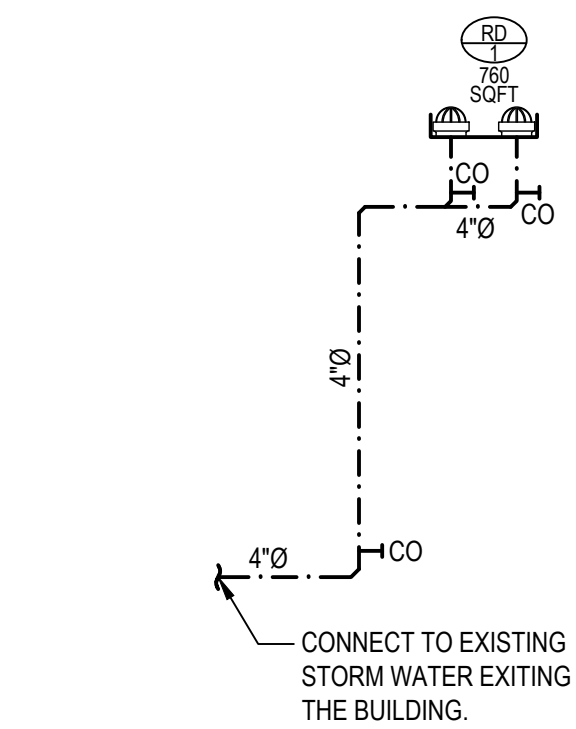
Type	Natural (Natural, Propane)
L _H	103 MAX Horizontal length (feet)
L _V	28 MAX Vertical length (feet)
L _F	37.72 MAX Fittings Equivalent length (feet)
L _T	168.72 MAX Total length (feet)
P1	27.7 initial press. (inches WC)
ΔH	2.77 pressure drop (inches WC)
P2	24.93 final press. (inches WC)
Y	0.99920 Superexpansibility-if P1>1.5
C _r	0.60940
Q _i	2313'D ² ·6.23'((ΔH)/(C·L)) ^{0.541}
Q _h	2237'D ² ·6.23'((P1-P2) ²) ^{0.541} (C·L) ^{0.541}

Quick Calculator
PSI inch WC
1 27.7

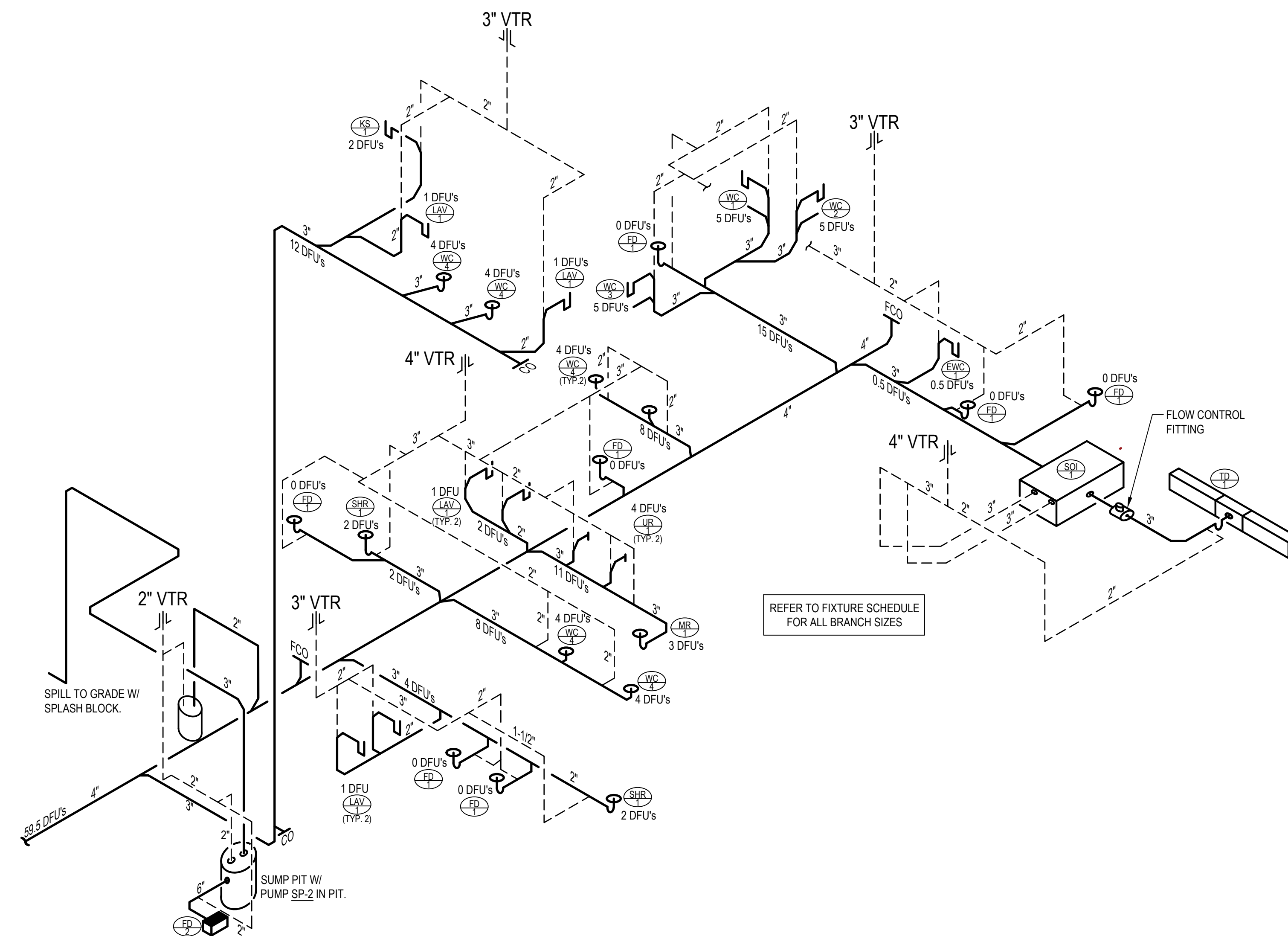
SIZE	Maximum - MBH L _T = 168.72
1/2"	99
3/4"	207
1"	390
1-1/4"	800
1-1/2"	1199
2"	2309
2-1/2"	3680
3"	6505
4"	13268
6"	38867



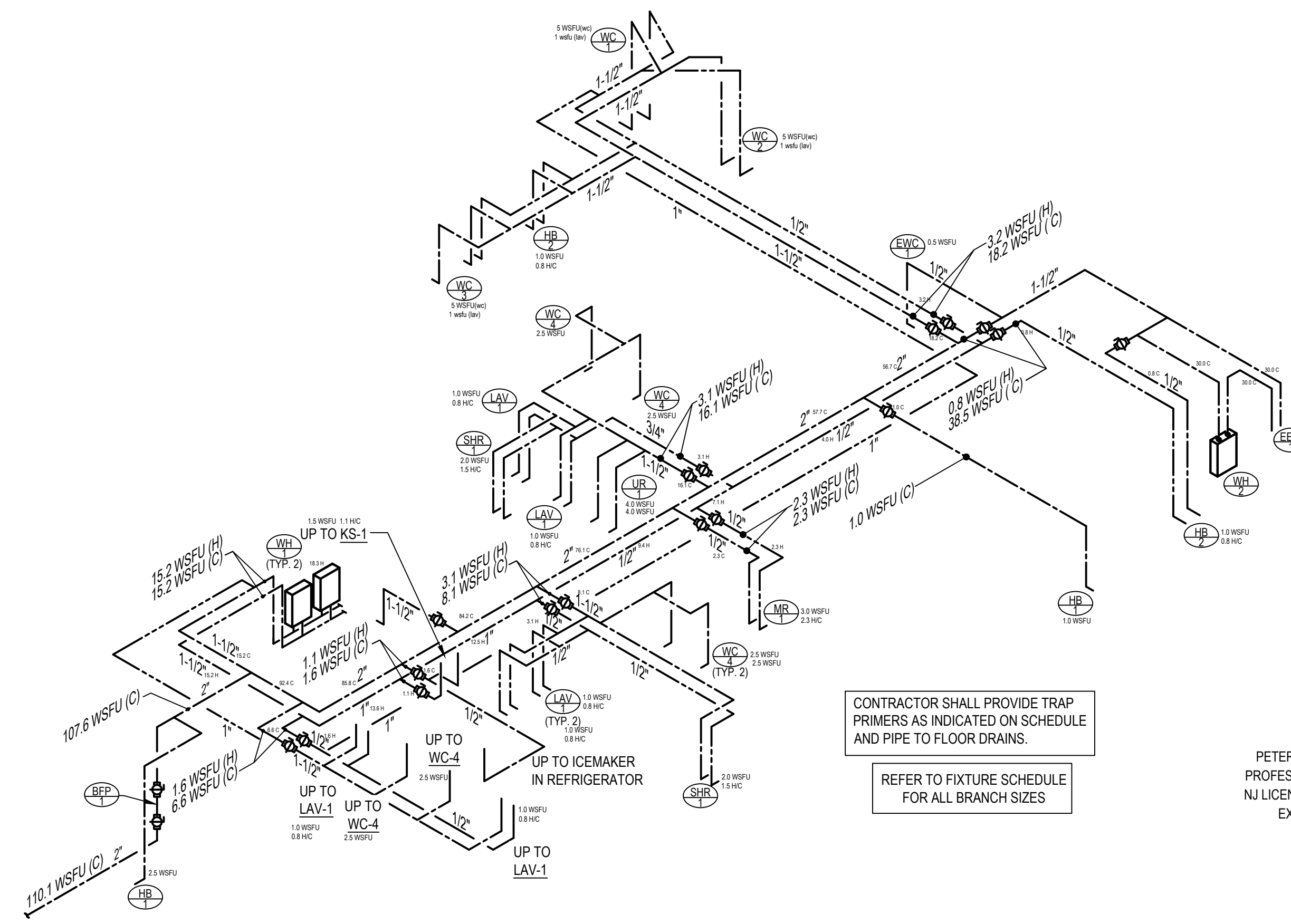
3 GAS RISER DIAGRAM
NOT TO SCALE



4 STORM WATER RISER
NOT TO SCALE



1 SANITARY ISOMETRIC DIAGRAM
NOT TO SCALE



2 DOMESTIC WATER ISOMETRIC DIAGRAM
NOT TO SCALE

CODE REVIEW:

CERTIFICATE:



SPIEZLE ARCHITECTURAL GROUP INC.
121 MARKET STREET
CAMDEN, NJ 08102
PHONE: (856) 974 7666

SIGNATURE:
THOMAS S. PERRINO 21A01925400
SCOTT E. DONNE 21A01914400
STEVEN LICONE 21A0171000
STEVEN G. SEIGEL 21A01944200
ANGILO ALBERTO 21A01948700
JOHN F. WRIGHT 21A01784200
SPIEZLE ARCHITECTURAL GROUP, INC. 21A020053000

SEAL:

BID SET - 06/25/2024

PROJECT:

HADDONFIELD POLICE STATION
1 WALNUT STREET, HADDONFIELD, NJ 08033
FOR
CAMDEN COUNTY IMPROVEMENT AUTHORITY
520 MARKET STREET, 6TH FLOOR, CAMDEN, NEW JERSEY 08102

FOR CODE REVIEW: 02/23/24

REVISIONS:	REVISION NAME	DATE
1		

FOR BID: 06/25/2024

DRAWING TITLE:
PLUMBING ISOMETRIC & RISER DIAGRAMS

COMMISSION NUMBER:
23M014

DO NOT SCALE THE DRAWINGS
DRAWING NUMBER:
P3.0

NJ COA NUMBER 24GA27940200

PMH ASSOCIATES, INC.
MECHANICAL, ELECTRICAL & FIRE PROTECTION ENGINEERING
1217 N CHURCH ST. STE B MOORESTOWN, NJ 08057
(856) 273-0554 • FAX (856) 273-7701 • PMH@PMH-ASSOCIATES.COM

EIC: PC: PM: DD: