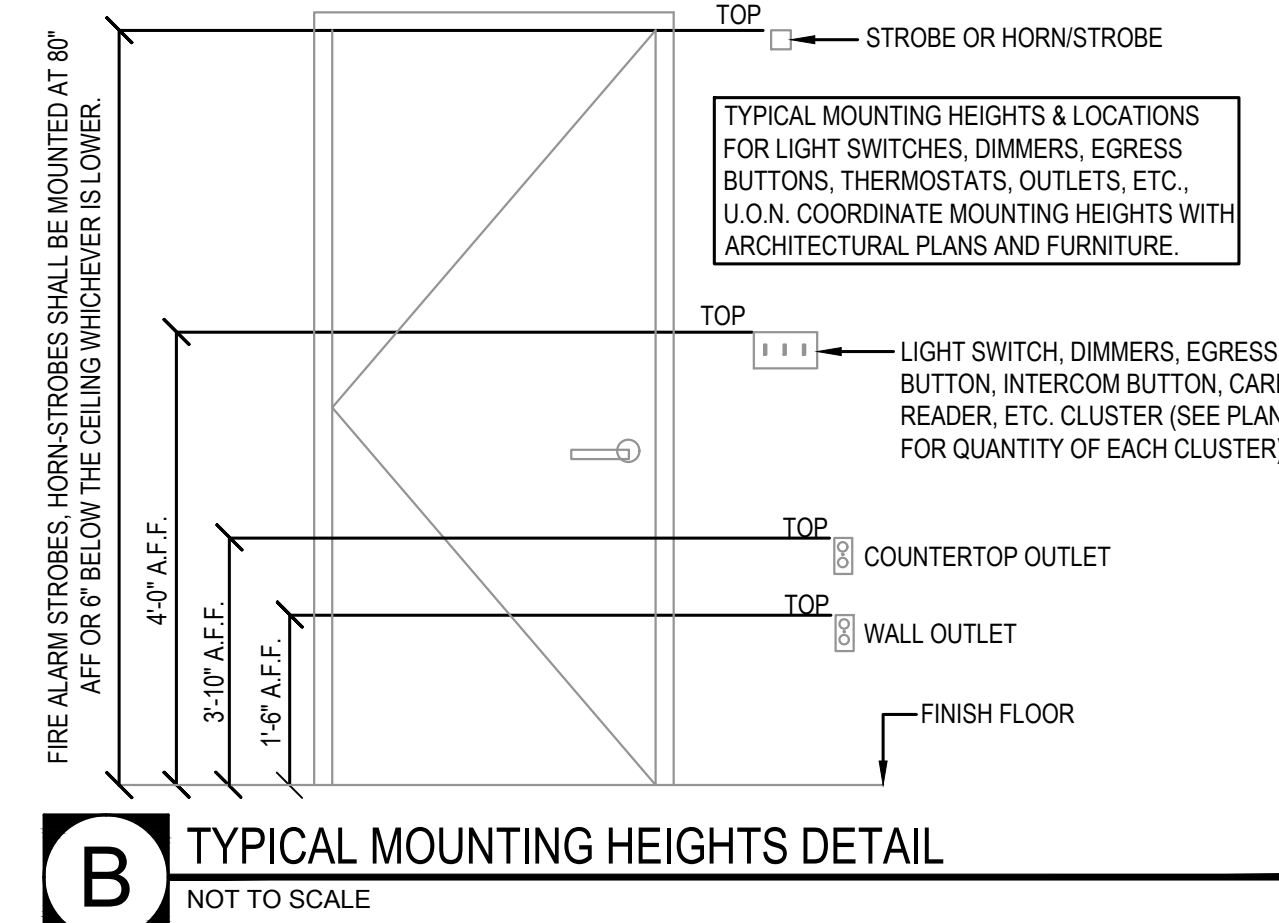
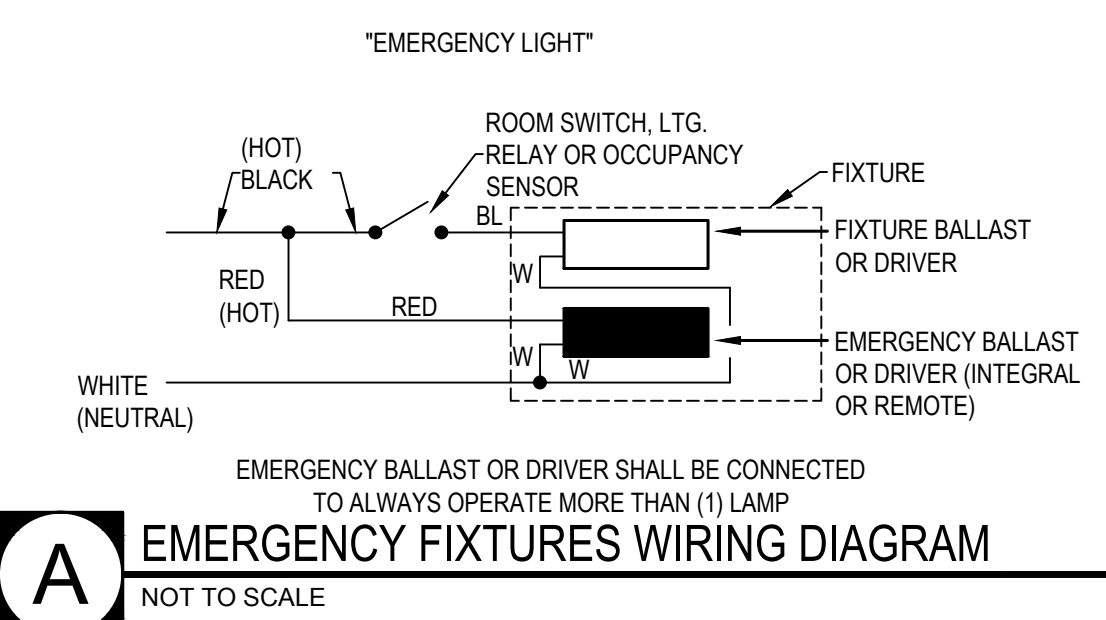


TYPE	SYMBOL	MANUFACTURER	MODEL NUMBER	DESCRIPTION	LAMP/S	MOUNTING - COMMENTS
A		RAB	SWISHFA 2X2 120V / D10	2' x 2' LED LAY-IN INDIRECT LIGHTING	29W LED @ 3500°K	RECESSED IN SUSPENDED CEILING
AIEM		RAB	SWISHFA 2X2 120V / D10 INCLUDE /E2 FOR EMERGENCY	2' x 2' LED LAY-IN INDIRECT LIGHTING	29W LED @ 3500°K	RECESSED IN SUSPENDED CEILING
B		LITHONIA	WL2 2ZL E21 LP835	2' LED WALL BRACKET & SURFACE MOUNTED FIXTURE	21W LED	-
C		LITHONIA	WL4 40L E21 LP835	4' LED WALL BRACKET & SURFACE MOUNTED FIXTURE	39.5W LED	-
D (ETR)		EXISTING FIXTURES			ESTIMATED AT 50W LED EACH	-
F		FAIL-SAFE	FMR S 124 LD4 2 STD 35 UNV 82/88 EDD 1 YMF VRSD	1' x4' LED SURFACE MOUNTED SECURITY LIGHTING	73W LED @ 3500°K	
F/EM		FAIL-SAFE	FMR S 124 LD4 2 STD 35 UNV 82/88 EDD 1 EL14W YMF VRSD	1' x4' LED SURFACE MOUNTED SECURITY LIGHTING	73W LED @ 3500°K	EMERGENCY BALLASTS INCLUDED IN FIXTURES AS INDICATED
G		SPITZER LIGHTING	DFLV 2 40L U CC WH	2' LED SURFACE MOUNTED VANDAL RESISTANT LUMINAIRE	40W LED @ 3000°K	MOUNTED ABOVE DOORWAY
H		LITHONIA	TWS LED 1 50K 120V	LED WALL LUMINAIRE	19W LED	ELEVATOR PIT LIGHTING
J		SPITZER LIGHTING	DFLV 6 40L U CC WH	CUSTOM 6' LED SURFACE MOUNTED VANDAL RESISTANT LUMINAIRE	40W LED @ 3000°K	MOUNTED ABOVE DOORWAY
K		FINELITE	E1-I-C-2'X4'-S-835-TG-120V-SC	LED E1-INDIRECT (E1-I) CONFIGURATION	37.3W LED 3500K	VERIFY MOUNTING HEIGHT WITH ARCHITECTURAL PLANS
L		FINELITE	E1-I-C-3'-S-835-TG-120V-SC	LED E1-INDIRECT (E1-I) LINEAR	4.9W/FT LED 3500K	VERIFY MOUNTING HEIGHT WITH ARCHITECTURAL PLANS
M		FINELITE	HP-4-R-D-(L OF RUN) -S -835-F-96LG-120-SC-FC-10	LED HIGH PERFORMANCE 4" APERTURE (HP-4) RECESSED	9.3W/FT LED 3500K	RECESSED IN CEILING
MEM		FINELITE	HP-4-R-D-(L OF RUN) -S -835-F-96LG-120-SC-FC-10-LGD18W	LED HIGH PERFORMANCE 4" APERTURE (HP-4) RECESSED	9.3W/FT LED 3500K	RECESSED IN CEILING
EXIT		LITHONIA	LQM S W 3 R 120/277 EL N	LED SELF POWERED EXIT SIGN	LAMPS SUPPLIED WITH FIXTURE	
EXIT2		LITHONIA	LHQM LED R QUANTUM COMBO	LED SELF POWERED EXIT SIGN EMERGENCY LIGHT COMBO	1.5W / 9.6V LED LAMPS	
EXIT3		LITHONIA	LHQM LED R HO QUANTUM COMBO	EMERGENCY LIGHT W/ REMOTE CAPABILITY - INCLUDE (2) MATCHING WEATHERPROOF LED REMOTE HEADS	1.5W / 9.6V LED LAMPS	
ELM2		LITHONIA	ELM2L LED	EMERGENCY LIGHTING UNIT	LAMP SUPPLIED WITH FIXTURE	

EMERGENCY AND NIGHT LIGHT NOTES

- LIGHTING FIXTURES DENOTED WITH A HORIZONTAL HATCH INDICATE FIXTURES WHICH SHALL INCLUDE A BODINE STYLE INTERNAL EMERGENCY LIGHTING BALLAST OR LED DRIVER - BODINE OR IOTA EM BALLAST OR DRIVER WITH 1400 LUMEN MINIMUM OUTPUT (FOR T8, CFL AND LED) OR EQUIVALENT.
- EMERGENCY LIGHT (EM) FIXTURES ARE WIRED AS INDICATED IN ADJACENT BALLAST / DRIVER WIRING DIAGRAM DETAIL #A. EM FIXTURES AS SHOWN IN THE DETAIL ARE CAPABLE OF BEING SWITCHED BY LOCAL CONTROLS AND STILL OPERATE IN THE EVENT OF A POWER FAILURE.

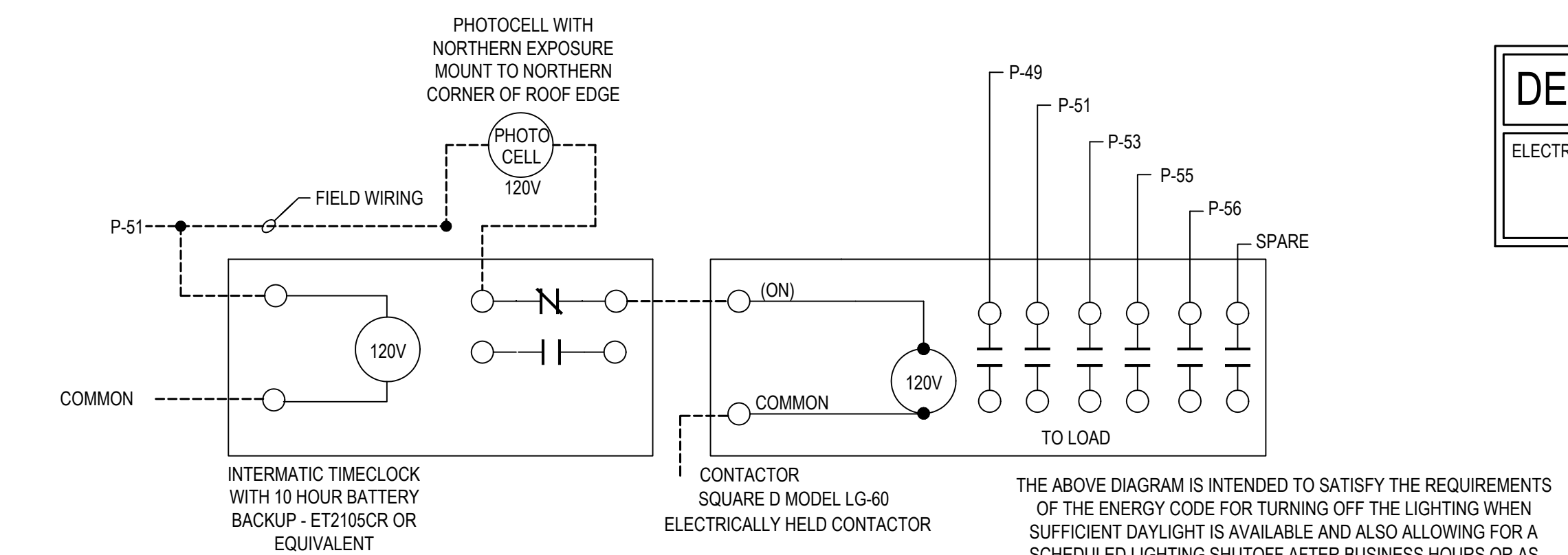
NL = NIGHT LIGHT
EM = EMERGENCY LIGHT
NL/EM = NIGHT LIGHT / EMERGENCY LIGHT



PROVIDE AND INSTALL PHOTOCELL AND TIMECLOCK CONNECTED TO OPERATE IN THE FOLLOWING MANNER: PHOTOCELL "ON", TIMECLOCK "OFF". CONNECT EXTERIOR SIGNAGE AND EXTERIOR LIGHTING CIRCUITS AS DIRECTED TO THE CONTRACTOR. (COORDINATE WITH GENERAL CONTRACTOR) PROVIDE SQUARE-D LG STYLE ELECTRICALLY HELD CONTACTORS.

SET THE TIMECLOCK "ON-TIME" TO 8:00 am. VERIFY THE "OFF-TIME" SETTING WITH THE OWNER.

THE INTENT OF THIS DESIGN IS TO ALLOW THE PHOTOCELL TO CONTROL THE TURNING ON OF THE LIGHTING WHEN IT GETS DARK. THE LIGHTING WILL THEN REMAIN ON UNTIL THE PRE-SET TIMECLOCK OFF TIME.

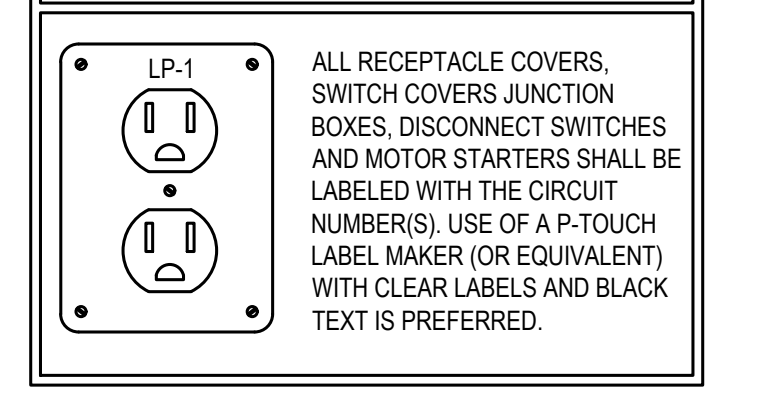


ELECTRICAL LEGEND

ALL MEASUREMENTS NOTED ON THE PLANS SHALL BE TAKEN FROM THE TOP OF THE OUTLET OR DEVICE

- 125 VOLT, 20 AMP, DUPLEX RECEPTACLE (PANEL "A", CKT "1")
- QUAD RECEPTACLE (TWO DUPLEX, 125V, 20A)
- SPECIAL RECEPTACLE, VERIFY WITH EQUIPMENT
- RECEPTACLES INSTALLED IN THE LOCATIONS GIVEN IN NEC ARTICLE 406.12 SHALL BE LISTED TAMPER - RESISTANT.
- JUNCTION BOX
- CEILING FAN BOX
- HOMERUN TO PANEL (PANEL "A", CKT "1")
- PANELBOARD
- DISCONNECT SWITCH, AMP RATING SHOWN (NF = NON-FUSED DISCONNECT) ALL INTERIOR DISCONNECTS SHALL BE RATED NEMA 1, ALL EXTERIOR DISCONNECTS SHALL BE RATED NEMA 3R NUMBER OF POLES AS REQUIRED FOR CONNECTED CIRCUIT
- GROUND FAULT CIRCUIT INTERRUPTER - PROVIDE AND INSTALL EITHER GFCI RECEPTACLES OR GFCI CIRCUIT BREAKERS WHEN RECEPTACLES ARE NOT READILY ACCESSIBLE.
- LISTED WEATHER RESISTANT DEVICE
- TELEPHONE / DATA (CAT. 6)
- TELEPHONE
- DATA (CAT. 6)
- COAXIAL CABLE
- USB CHARGING PORT
- SINGLE POLE, SPECIFICATION GRADE
- THREE-WAY SWITCH, SPECIFICATION GRADE
- FOUR-WAY SWITCH, SPECIFICATION GRADE
- PILOT-LIGHT SWITCH, SPECIFICATION GRADE
- DIMMER SWITCH - 1200 WATT COMPATIBLE WITH SELECTED FIXTURES
- VACANCY SENSORS AND VACANCY SENSORS WITH DIMMING. (INCLUDE DIMMING CONTROL WIRING) USE LOW VOLTAGE SWITCHES AND CEILING SENSORS WITH POWER PACKS FROM WATTSTOPPER OR EQUIVALENT
- PUSH-BUTTON STATION
- FLOOR-BOX - FOR CONCRETE & TILE INSTALLATION
- CIRCUIT CONNECTION
- SWITCHED CIRCUIT CONNECTION
- LIGHTING SWITCH LEG

LABELING NOTE



ELECTRICAL NOTES

- ALL ELECTRICAL WORK SHALL BE IN STRICT ACCORDANCE WITH THE NEW JERSEY UNIFORM CONSTRUCTION CODE AND THE 2020 NATIONAL ELECTRICAL CODE, NEW JERSEY EDITION IN EFFECT AND LOCAL ORDINANCES.
 - ALL CONDUCTORS SHALL BE COPPER. ALUMINUM WIRE WILL NOT BE ACCEPTED UNLESS SPECIFICALLY NOTED OTHERWISE.
 - ALL FEEDER AND BRANCH CIRCUIT CABLING SHALL BE IN ACCORDANCE WITH NEC ARTICLE 708.10 WITH A FULL SIZE GROUNDING CONDUCTOR OR CONDUIT WITH A FULL SIZE GROUNDING CONDUCTOR, UON. FEEDERS AND THEIR ASSOCIATED CONDUITS SHALL BE LISTED AS AN ASSEMBLY WITH A 2 HOUR FIRE-RATING AS REQUIRED BY 708.10(C). RACEWAYS SHALL BE RUN EXPOSED IN UNFINISHED AREAS TIGHT TO THE UNDERSIDE OF STRUCTURE AND PARALLEL OR PERPENDICULAR TO THE BUILDING WALLS UNLESS SPECIFICALLY NOTED OTHERWISE.
 - SEE ARTICLES 708.10(C)(1), 708.10(C)(2) AND 708.10(D) FOR WIRING METHODS AND REQUIREMENTS. NOTE: THE ENTIRE BUILDING IS CONSIDERED A "DESIGNATED CRITICAL OPERATIONS AREA, (DCOA)"
 - ALL CIRCUITS SHALL BE MINIMUM WIRE SIZE OF #12 AWG COPPER EXCEPT FOR SIGNAL AND CONTROL WIRING UNLESS SPECIFICALLY NOTED OTHERWISE.
 - CONTRACTOR SHALL INSTALL AND CONNECT ALL POWER WIRING TO EQUIPMENT FURNISHED BY OTHERS AND SHALL WIRE LINE VOLTAGE THERMOSTATS FOR MECHANICAL EQUIPMENT AS WELL AS ALL STARTERS, RELAYS, AND CONTACTORS AND ALL OTHER MECHANICAL EQUIP.
 - CONTRACTOR SHALL FURNISH AND INSTALL DISCONNECT SWITCHES AS REQUIRED BY CODE WHETHER OR NOT THEY ARE INDICATED ON PLANS.
 - CONTRACTOR SHALL VERIFY ALL DIMENSIONS PRIOR TO BEGINNING WORK.
 - MULTI-WIRE CIRCUITS (NEUTRAL SHARING) ARE PROHIBITED FROM THE ENTIRE PROJECT UNLESS WRITTEN PERMISSION IS OBTAINED FROM THE DESIGN ENGINEER.
 - ELECTRICAL CONTRACTOR SHALL WIRE ALL BATTERY BACKED BALLAST, SECURITY RECEPTACLES, SENSORS, EMERGENCY LIGHTS AND EXIT SIGNS AHEAD OF ANY SWITCHES. EMERGENCY LIGHTING AND EXIT SIGNS SHALL BE FED FROM THE SAME BRANCH CIRCUIT AS THAT SERVING THE NORMAL LIGHTING IN THE AREA. BATTERIES MUST BE POWERED AT ALL TIMES. COMPLY WITH NEC ARTICLE 700-12(F) AND 700-16. EGRESS DOOR'S EXTERIOR EMERGENCY LIGHTS AND REMOTE HEADS SHALL BE CONNECTED TO THE EXTERIOR LIGHTING CIRCUIT TO OPERATE UPON FAILURE OF THE EXTERIOR LIGHTING.
 - DRAWINGS ARE DIAGRAMMATIC. PRIOR TO BIDDING VERIFY CONDITIONS, LOCATIONS AND REQUIREMENTS IN THE FIELD TO ENSURE A COMPLETE AND PROPERLY OPERATIONAL SYSTEM. EXAMINE ALL CONTRACT DWGS, FOR REQUIREMENTS AFFECTING WORK OF THE ELECTRICAL TRADE.
 - QUESTIONS REGARDING THESE DRAWINGS SHALL BE ADDRESSED TO THE ARCHITECT PRIOR TO THE SUBMISSION OF BIDS. OTHERWISE THE ARCHITECT'S INTERPRETATION OF THE MEANING AND INTENT OF THE DRAWINGS SHALL BE FINAL.
 - COORDINATE LOCATIONS AND MOUNTING HEIGHTS OF THE OUTLET BOXES, JUNCTION BOXES, AND EQUIPMENT DISCONNECTION TO AGREE WITH REQUIRED LOCATIONS OF FURNISHINGS OF EQUIPMENT SERVED. GENERALLY, RECEPTACLES SHALL BE MOUNTED 18" ABOVE FINISHED FLOOR AND LIGHT SWITCHES AT 48" ABOVE FINISHED FLOOR UNLESS OTHERWISE NOTED. ALL MEASUREMENTS SHALL BE TAKEN FROM THE TOP OF THE J-BOX OR DEVICE.
 - THE CONTRACTOR SHALL PROVIDE SUBMITTALS TO THE ENGINEER ON ALL MAJOR ELECTRICAL EQUIPMENT (CIT CABINETS, PANELS, TRANSFORMERS, CONTACTORS, LUMINAIRE, ETC.) FOR REVIEW PRIOR TO PURCHASING.
 - INSTALL PENETRATION FIRESTOPPING SYSTEMS TO COMPLY WITH MANUFACTURER'S WRITTEN INSTALLATION INSTRUCTIONS AND PUBLISHED DRAWINGS FOR PRODUCTS AND APPLICATIONS.FLOOR PENETRATIONS REQUIRE FIRESTOPPING
 - IT IS THE RESPONSIBILITY OF THIS CONTRACTOR TO RECEIVE AND REVIEW SUBMITTALS FOR ALL ELECTRIFIED EQUIPMENT TO BE INSTALLED ON THIS PROJECT. NO EQUIPMENT OR MATERIALS ARE TO BE PURCHASED OR INSTALLED PRIOR TO ENSURING THAT BRANCH CIRCUITS ARE APPROPRIATE FOR THE EQUIPMENT BEING FED. NO ADDITIONAL COSTS WILL BE APPROVED IF THIS PROCEDURE IS NOT FOLLOWED. CONTACT THE ENGINEER TO RESOLVE ANY CONFLICTS THAT MAY ARISE.
 - PROVIDE ACCESS PANELS FOR ANY DEVICES NEEDING SERVICE OR ADJUSTMENT THAT IS NOT READILY ACCESSIBLE OTHERWISE. ACCESS PANELS SHALL MAINTAIN FIRE, SMOKE, ETC. RATINGS OF ASSEMBLIES WHERE APPLICABLE.
- AFF - ABOVE FINISHED FLOOR
AFG - ABOVE FINISHED GRADE
UON - UNLESS OTHERWISE NOTED
ETR - EXISTING TO REMAIN

FUSE INSTALLATION REQUIREMENTS

CIRCUITS 601 TO 6000 AMPERES SHALL BE PROTECTED BY CURRENT-LIMITING "BUSSMAN" CLASS L, TIME DELAY KRP-C FUSES. FUSES SHALL BE TIME DELAY AND SHALL HOLD 500% OF RATED CURRENT FOR A MINIMUM OF 4 SECONDS AND SHALL BE UL LISTED AND CSA CERTIFIED WITH AN INTERRUPTING RATING OF 300,000 AMPERES RMS SYMMETRICAL. NO SUBSTITUTIONS PERMITTED WITHOUT ENGINEER'S APPROVAL.

CIRCUITS 600 AMPERES OR LESS SHALL BE PROTECTED BY CURRENT-LIMITING "BUSSMAN" CLASS J, TIME-DELAY LPJ FUSES. (600V) OR LESS FUSES. FUSES SHALL HOLD 500% OF RATED CURRENT FOR A MINIMUM OF 10 SECONDS, AND SHALL BE UL LISTED AND CSA CERTIFIED WITH AN INTERRUPTING RATING OF 300,000 AMPERES RMS SYMMETRICAL. NO SUBSTITUTIONS PERMITTED WITHOUT ENGINEER'S APPROVAL.

INCLUDE PLACARD ON EACH DISCONNECT STATING: REPLACEMENT FUSES SHALL BE CLASS J TIME-DELAY LPJ FUSES ONLY.

DEMOLITION NOTE

ELECTRICAL CONTRACTOR SHALL BE RESPONSIBLE FOR DE-ENERGIZING THE ELECTRICAL SERVICE IN THE AREAS OF DEMOLITION PRIOR TO THE START OF DEMOLITION.

HARRY F. CARSON
PROFESSIONAL ENGINEER
NJ LICENSE NUMBER 45514
EXP: 04/30/2026

NJ COA NUMBER 24GA27940200

PMH ASSOCIATES, INC.
MECHANICAL, ELECTRICAL & FIRE PROTECTION ENGINEERING
1217 N CHURCH ST. STE B MOORESTOWN, NJ 08057
(856) 273-0554 - FAX (856) 273-7101 - PMH@PMH-ASSOCIATES.COM

EIC: PC: PM: DD:

CODE REVIEW:

CERTIFICATE:

SPIEZLE ARCHITECTURAL GROUP INC.
121 MARKET STREET
CAMDEN, NJ 08102
PHONE: (856) 974 7666

SIGNATURE:
THOMAS S. PERRINO 21A01925400
SCOTT E. DOMINE 21A01914400
STEVEN LICONE 21A01791000
STEVEN G. SEIGEL 21A01944200
ANGILO ALBERTO 21A01946700
JOHN F. WRIGHT 21A01784200
SPIEZLE ARCHITECTURAL GROUP, INC. 21A020053000

SEAL:

BID SET - 06/25/2024

PROJECT:

HADDONFIELD POLICE STATION

1 WALNUT STREET, HADDONFIELD, NJ 08033

FOR

CAMDEN COUNTY IMPROVEMENT AUTHORITY

520 MARKET STREET, 6TH FLOOR, CAMDEN, NEW JERSEY 08102

FOR CODE REVIEW: 02/23/24

REVISIONS:

REVISION NAME	DATE

FOR BID: 06/25/2024

DRAWING TITLE:

ELECTRICAL NOTES & SCHEDULES

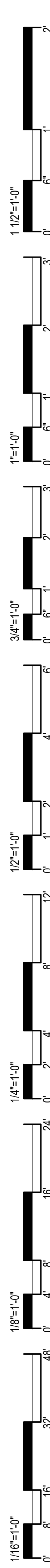
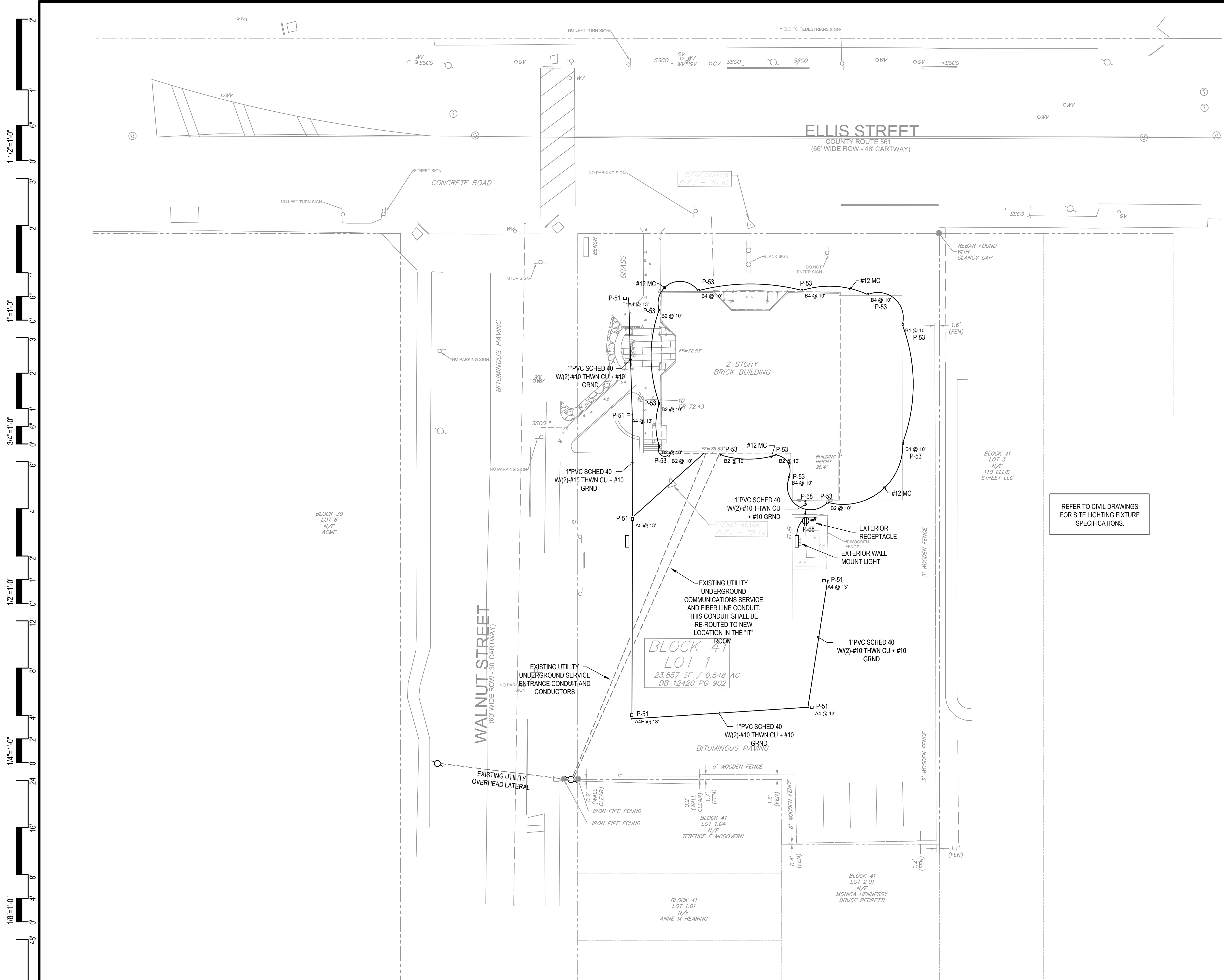
COMMISSION NUMBER: 23M014

DO NOT SCALE THE DRAWINGS

DRAWING NUMBER: **E0.1**

1 1/2"=1'-0"
3/4"=1'-0"
3/8"=1'-0"
1/2"=1'-0"
1/4"=1'-0"
1/8"=1'-0"
1/16"=1'-0"

THIS DRAWING IS FORWARTED TO BE PRINTED AT 24"x36"



1 ELECTRICAL SITE PLAN
SCALE: 1/16"=1'-0"

HARRY F. CARSON
PROFESSIONAL ENGINEER
NJ LICENSE NUMBER 45514
EXP: 04/30/2026

NJ COA NUMBER 24GA27940200

PMH ASSOCIATES, INC.
MECHANICAL, ELECTRICAL & FIRE PROTECTION ENGINEERING
1217 N CHURCH ST. STE B MOORESTOWN, NJ 08057
(856) 273-0554 • FAX (856) 273-7701 • PMH@PMH-ASSOCIATES.COM

EIC: PC: PE: PD:

CODE REVIEW:

CERTIFICATE:

spiezie

SPIEZLE ARCHITECTURAL GROUP INC.
121 MARKET STREET
CAMDEN, NJ 08102
PHONE: (856) 974 7666

SIGNATURE:
THOMAS S. PERRINO 21A01925400
SCOTT E. DONNE 21A01974400
STEVEN L. IONE 21A01975000
STEVEN G. SEGEL 21A01944200
ANGILO ALBERTO 21A01940700
JOHN F. WRIGHT 21A01784200
SPIEZLE ARCHITECTURAL GROUP, INC. 21A020053000

SEAL:

BID SET - 06/25/2024

PROJECT:

HADDONFIELD POLICE STATION
1 WALNUT STREET, HADDONFIELD, NJ 08033
FOR
CAMDEN COUNTY IMPROVEMENT AUTHORITY
520 MARKET STREET, 6TH FLOOR, CAMDEN, NEW JERSEY 08102

FOR CODE REVIEW: 02/23/24

REVISIONS:

REVISION NAME	DATE

FOR BID: 06/25/2024

DRAWING TITLE:

ELECTRICAL SITE PLAN

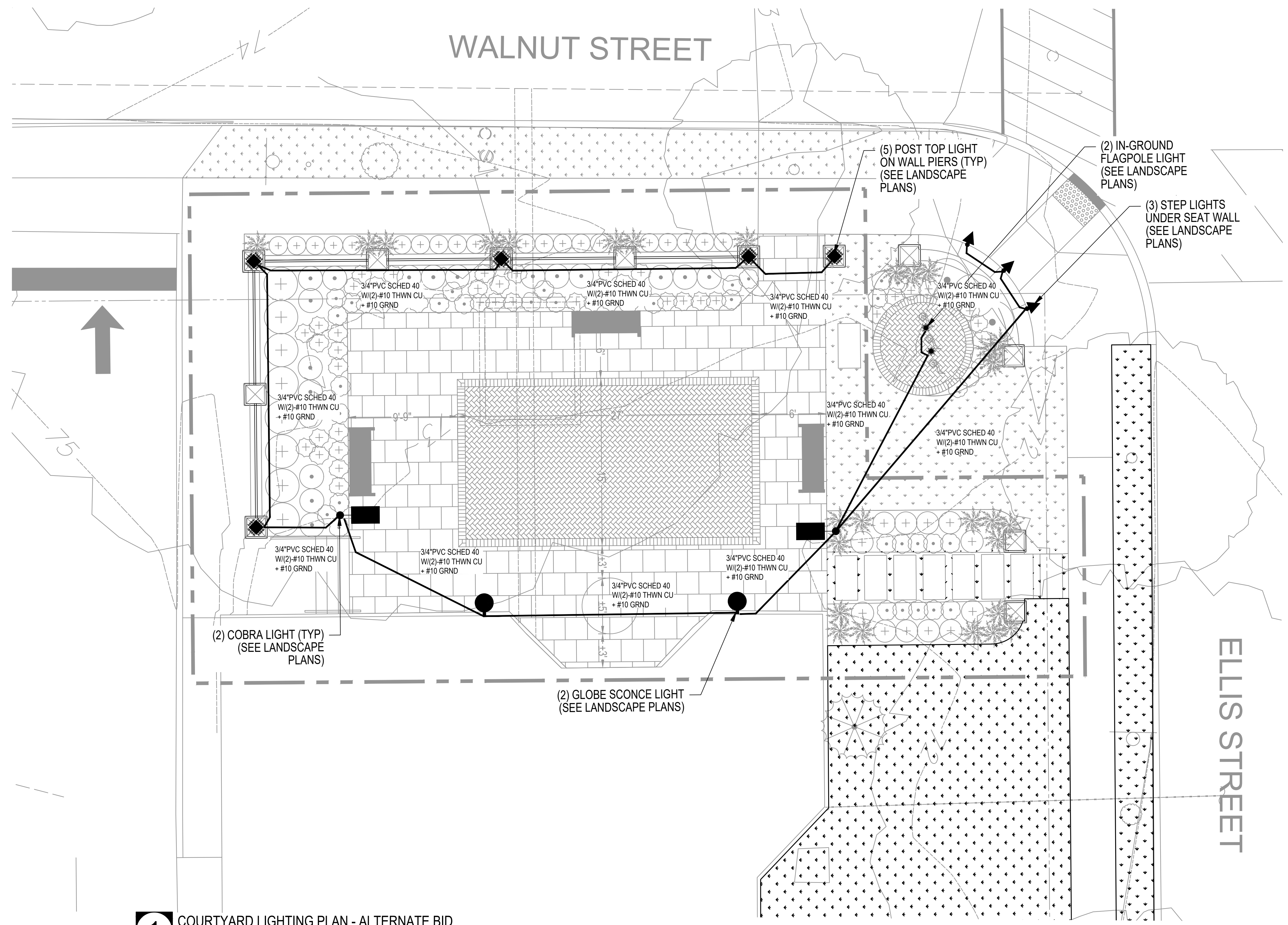
COMMISSION NUMBER:
23M014

DO NOT SCALE THE DRAWINGS

DRAWING NUMBER:
E0.3

THIS DRAWING IS FORMATTED TO BE PRINTED AT 24"x36"

1 1/2"=1'-0"
 1"=1'-0"
 3/4"=1'-0"
 1/2"=1'-0"
 1/4"=1'-0"
 1/8"=1'-0"
 1/16"=1'-0"



1 COURTYARD LIGHTING PLAN - ALTERNATE BID
 NOT TO SCALE

ELECTRICAL NOTES

PROVIDE AND INSTALL MINIMUM 3/4" PVC SCHEDULE 40 CONDUIT FROM A 20 AMPERE CIRCUIT BREAKER IN PANEL "P-49" IN THE ELECTRICAL ROOM UNDERGROUND TO THE COURTYARD WITH (2) #10 THWN CU + #10 GRND.

MAKE CONNECTIONS TO ALL FIXTURES INDICATED ON THE PLANS. ALSO CONNECT TO SPARE CONTACT ON THE SITE LIGHTING AND SIGNAGE CONTACTOR FOR CONTROL.

SEE LANDSCAPE PLANS FOR ADDITIONAL INFORMATION AND REQUIREMENT.

MINIMUM BURIAL DEPTH IN ACCORDANCE WITH NEC ARTICLE 300.5.

HARRY F. CARSON
 PROFESSIONAL ENGINEER
 NJ LICENSE NUMBER 45514
 EXP: 04/30/2026

NJ COA NUMBER 24GA27940200
PMH ASSOCIATES, INC.
 MECHANICAL, ELECTRICAL & FIRE PROTECTION ENGINEERING
 1217 N CHURCH ST. STE B MOORESTOWN, NJ 08057
 (856) 273-0554 • FAX: (856) 273-7701 • PMH@PMH-ASSOCIATES.COM
 EIC: PC: PM: DD:

CODE REVIEW:

CERTIFICATE:

spiezie

SPIEZLE ARCHITECTURAL GROUP INC.
 121 MARKET STREET
 CAMDEN, NJ 08102
 PHONE: (856) 974 7666

SIGNATURE:
 THOMAS S. PERRINO 21A01925400
 SCOTT E. DONNE 21A01974400
 STEVEN L. LIONE 21A01971000
 STEVEN G. SEGEL 21A01944000
 ANGELO ALBERTO 21A01940700
 JOHN F. WRIGHT 21A01944000
 SPIEZLE ARCHITECTURAL GROUP, INC. 21A020053000

SEAL:

BID SET - 06/25/2024

PROJECT:

HADDONFIELD POLICE STATION
 1 WALNUT STREET, HADDONFIELD, NJ 08033
 FOR
CAMDEN COUNTY IMPROVEMENT AUTHORITY
 520 MARKET STREET, 6TH FLOOR, CAMDEN, NEW JERSEY 08102

FOR CODE REVIEW: 02/23/24

REVISIONS:

REVISION NAME	DATE

FOR BID: 06/25/2024

DRAWING TITLE:

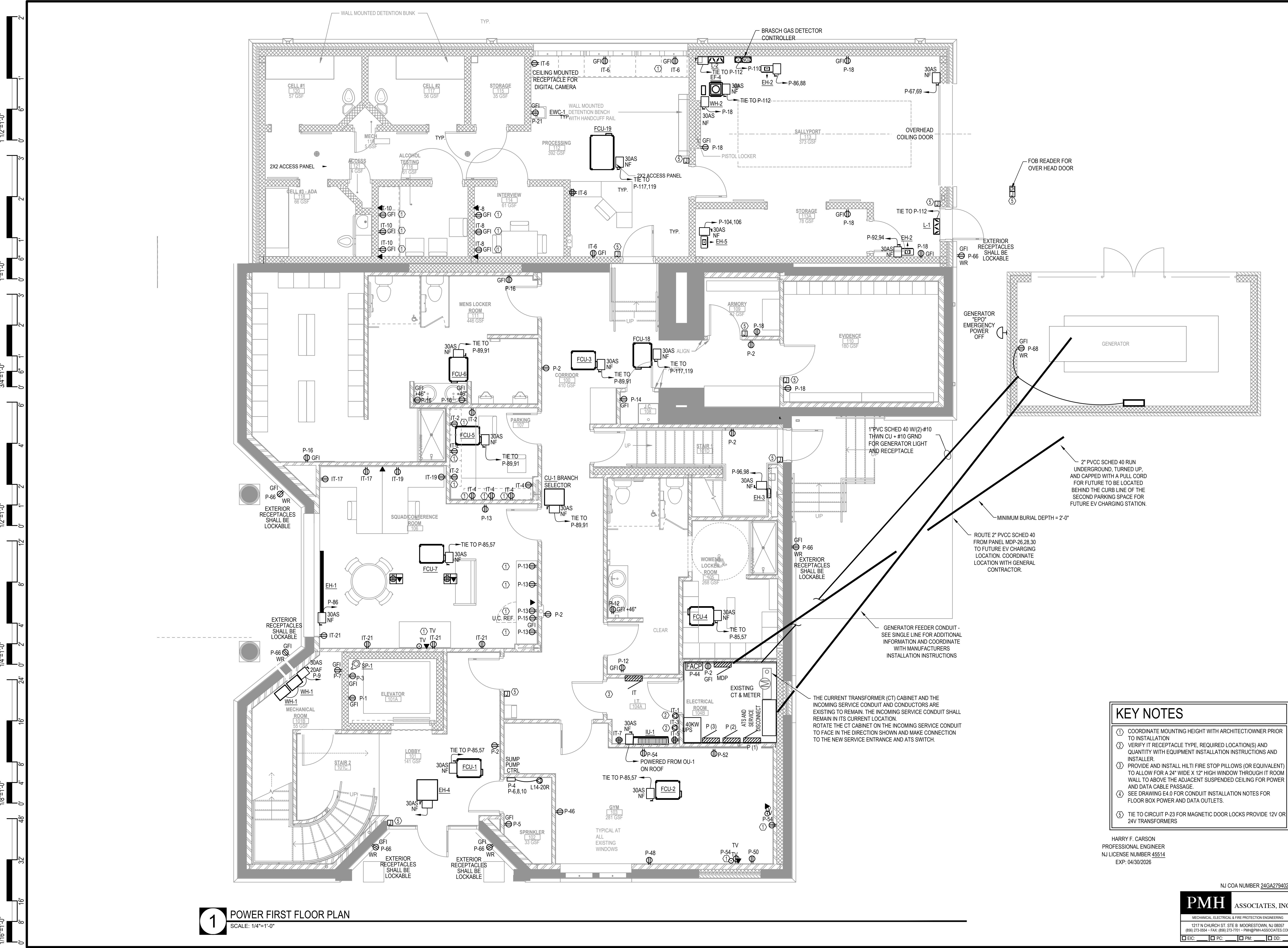
COURTYARD LIGHTING PLAN ALTERNATE BID

COMMISSION NUMBER:
23M014

DO NOT SCALE THE DRAWINGS

DRAWING NUMBER:
E0.4

THIS DRAWING IS FORMATTED TO BE PRINTED AT 24"x36"



1 POWER FIRST FLOOR PLAN
SCALE: 1/4"=1'-0"

- KEY NOTES**
- COORDINATE MOUNTING HEIGHT WITH ARCHITECT/OWNER PRIOR TO INSTALLATION
 - VERIFY IF RECEPTACLE TYPE, REQUIRED LOCATION(S) AND QUANTITY WITH EQUIPMENT INSTALLATION INSTRUCTIONS AND INSTALLER.
 - PROVIDE AND INSTALL HILTI FIRE STOP PILLOWS (OR EQUIVALENT) TO ALLOW FOR A 24" WIDE X 12" HIGH WINDOW THROUGH IT ROOM WALL TO ABOVE THE ADJACENT SUSPENDED CEILING FOR POWER AND DATA CABLE PASSAGE.
 - SEE DRAWING E4.0 FOR CONDUIT INSTALLATION NOTES FOR FLOOR BOX POWER AND DATA OUTLETS.
 - TIE TO CIRCUIT P-23 FOR MAGNETIC DOOR LOCKS PROVIDE 12V OR 24V TRANSFORMERS

HARRY F. CARSON
PROFESSIONAL ENGINEER
NJ LICENSE NUMBER 45514
EXP: 04/30/2026

NJ COA NUMBER 24GA27940200

PMH ASSOCIATES, INC.
MECHANICAL, ELECTRICAL & FIRE PROTECTION ENGINEERING
1217 N CHURCH ST. STE B MOORESTOWN, NJ 08057
(856) 273-0554 • FAX (856) 273-7701 • PMH@PMH-ASSOCIATES.COM

EIC: PC: PM: DD:

CODE REVIEW:

CERTIFICATE:

spiezie

SPIEZLE ARCHITECTURAL GROUP INC.
121 MARKET STREET
CAMDEN, NJ 08102
PHONE: (856) 974 7666

SIGNATURE:
THOMAS S. PERRINO 21A01925400
SCOTT E. DONNE 21A01974400
STEVEN L. IONE 21A0177020
STEVEN G. SEGEL 21A0194200
ANGELO ALBERTO 21A0194070
JOHN F. WRIGHT 21A01784200
SPIEZLE ARCHITECTURAL GROUP, INC. 21A02005300

SEAL:

BID SET - 06/25/2024

PROJECT:

HADDONFIELD POLICE STATION
1 WALNUT STREET, HADDONFIELD, NJ 08033
FOR
CAMDEN COUNTY IMPROVEMENT AUTHORITY
520 MARKET STREET, 6TH FLOOR, CAMDEN, NEW JERSEY 08102

FOR CODE REVIEW: 02/23/24

REVISIONS:

REVISION NAME	DATE
A	

FOR BID: 06/25/2024

DRAWING TITLE:
FIRST FLOOR POWER PLAN

COMMISSION NUMBER:
23M014


DO NOT SCALE THE DRAWINGS

DRAWING NUMBER:
E1.0

1 1/2"=1'-0"
3/4"=1'-0"
1/2"=1'-0"
1/4"=1'-0"
1/8"=1'-0"

CODE REVIEW:

CERTIFICATE:



SPIEZE ARCHITECTURAL GROUP INC.
121 MARKET STREET
CAMDEN, NJ 08102
PHONE: (866) 974 7666

SIGNATURE:
THOMAS S. PERRINO 21A01925400
SCOTT E. DONNE 21A01974600
STEVEN LIGONE 21A01970000
STEVEN G. SEGEL 21A01964200
ANGILO ALBERTO 21A01960700
JOHN F. WRIGHT 21A01784200
SPIEZE ARCHITECTURAL GROUP, INC. 21A020053000

SEAL:

BID SET - 06/25/2024

PROJECT:

HADDONFIELD POLICE STATION
1 WALNUT STREET, HADDONFIELD, NJ 08033
FOR
CAMDEN COUNTY IMPROVEMENT AUTHORITY
520 MARKET STREET, 6TH FLOOR, CAMDEN, NEW JERSEY 08102

FOR CODE REVIEW: 02/23/24

REVISIONS:

REVISION NAME	DATE

FOR BID: 06/25/2024

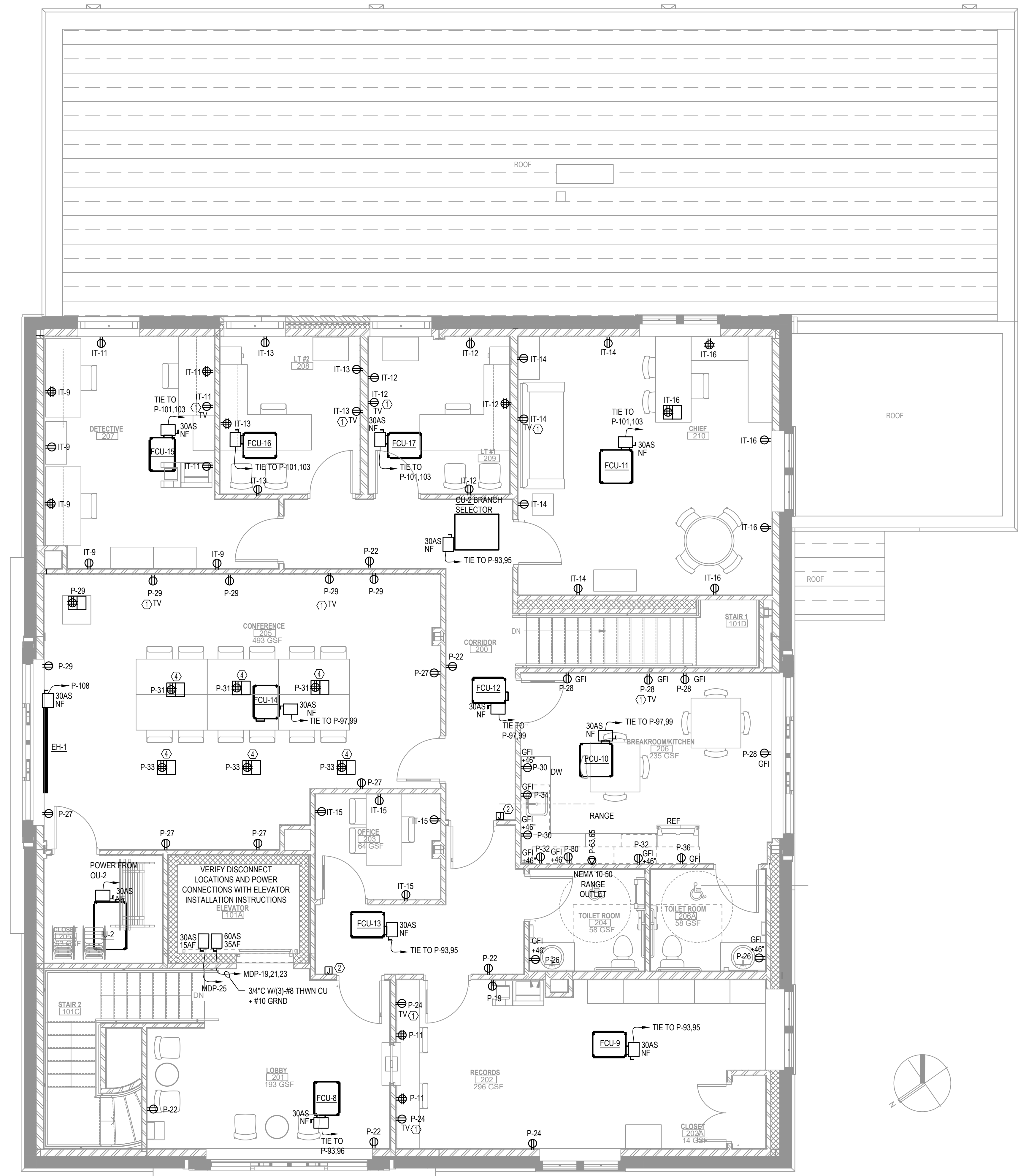
DRAWING TITLE:

SECOND FLOOR POWER PLAN

COMMISSION NUMBER:
23M014

DO NOT SCALE THE DRAWINGS

DRAWING NUMBER:
E1.1



KEY NOTES

- COORDINATE MOUNTING HEIGHT WITH ARCHITECT/OWNER PRIOR TO INSTALLATION
- TIE TO CIRCUIT P-23 FOR MAGNETIC DOOR LOCKS PROVIDE 12V OR 24V TRANSFORMERS

HARRY F. CARSON
PROFESSIONAL ENGINEER
NJ LICENSE NUMBER 45514
EXP: 04/30/2026

NJ COA NUMBER 24GA27840200

PMH ASSOCIATES, INC.
MECHANICAL, ELECTRICAL & FIRE PROTECTION ENGINEERING
1217 N CHURCH ST. STE B MOORESTOWN, NJ 08057
(856) 273-0554 • FAX: (856) 273-7701 • PMH@PMH-ASSOCIATES.COM

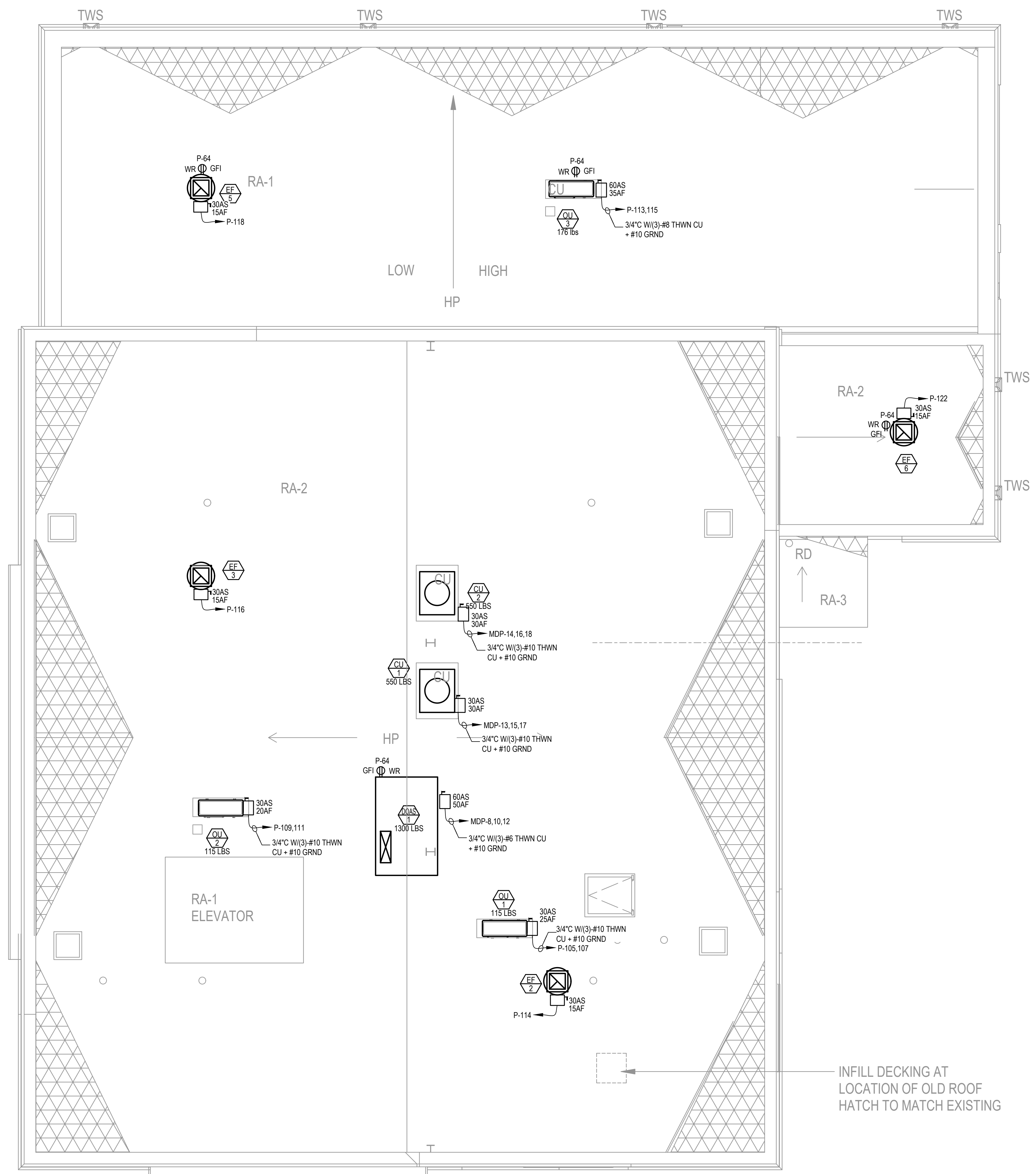
EIC: PC: PM: DD:

1 POWER SECOND FLOOR PLAN
SCALE: 1/4"=1'-0"

1 1/2"=1'-0"
3/4"=1'-0"
1/2"=1'-0"
1/4"=1'-0"
1/8"=1'-0"

THIS DRAWING IS FORMATTED TO BE PRINTED AT 24"x36"

1 1/2"=1'-0"
 1"=1'-0"
 3/4"=1'-0"
 1/2"=1'-0"
 1/4"=1'-0"
 1/8"=1'-0"
 1/16"=1'-0"



1 POWER ROOF PLAN
 SCALE: 1/4"=1'-0"

SIM
 SIM

INFILL DECKING AT
 LOCATION OF OLD ROOF
 HATCH TO MATCH EXISTING

HARRY F. CARSON
 PROFESSIONAL ENGINEER
 NJ LICENSE NUMBER 45514
 EXP: 04/30/2026

NJ COA NUMBER 24GA27840200

PMH ASSOCIATES, INC.
 MECHANICAL, ELECTRICAL & FIRE PROTECTION ENGINEERING
 1217 N CHURCH ST. STE B MOORESTOWN, NJ 08057
 (856) 273-0554 • FAX: (856) 273-7701 • PMH@PMH-ASSOCIATES.COM

EIC: PC: PM: DD:

CODE REVIEW:

CERTIFICATE:

spiezie

SPIEZLE ARCHITECTURAL GROUP INC.
 121 MARKET STREET
 CAMDEN, NJ 08102
 PHONE: (856) 974 7666

SIGNATURE:
 THOMAS S. PERRINO 21A01925400
 SCOTT E. DOMNE 21A01974400
 STEVEN L. IONE 21A0171000
 STEVEN G. SEGEL 21A01944200
 ANGELO ALBERTO 21A01946700
 JOHN F. WRIGHT 21A01784200
 SPIEZLE ARCHITECTURAL GROUP, INC. 21A02005300

SEAL:

BID SET - 06/25/2024

PROJECT:

HADDONFIELD POLICE STATION
 1 WALNUT STREET, HADDONFIELD, NJ 08033
 FOR
CAMDEN COUNTY IMPROVEMENT AUTHORITY
 520 MARKET STREET, 6TH FLOOR, CAMDEN, NEW JERSEY 08102

FOR CODE REVIEW: 02/23/24

REVISIONS:

REVISION NAME	DATE
A	

FOR BID: 06/25/2024

DRAWING TITLE:

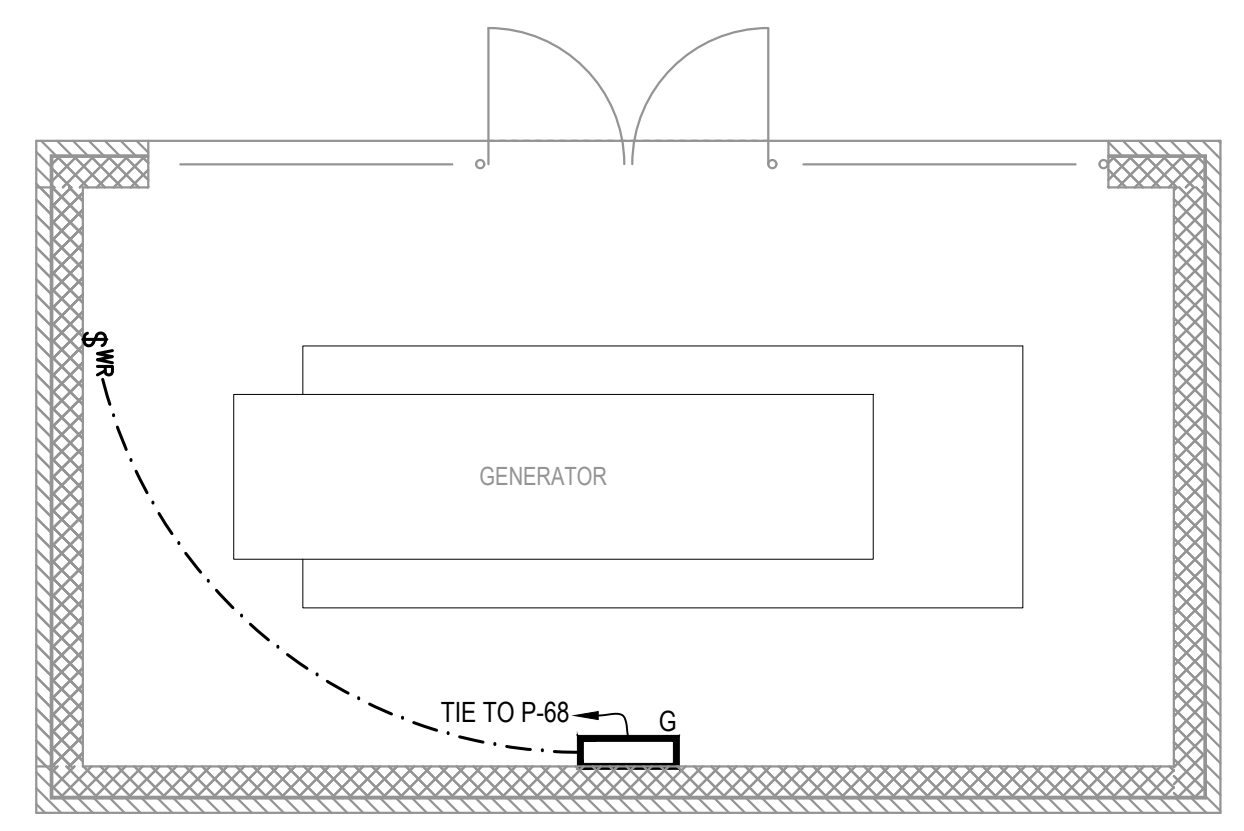
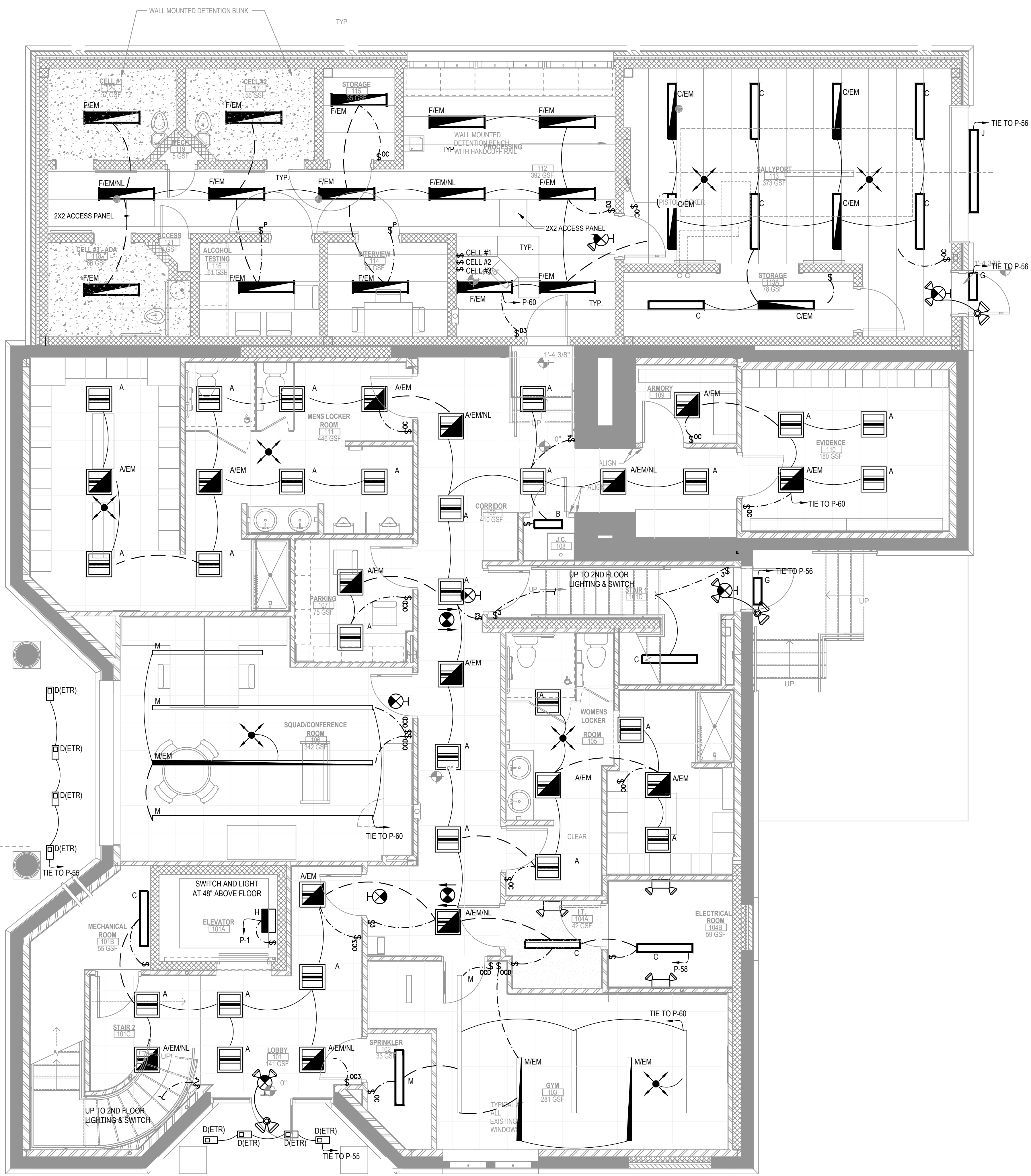
ROOF POWER PLAN

COMMISSION NUMBER:
23M014

DO NOT SCALE THE DRAWINGS

DRAWING NUMBER:
E1.2

THIS DRAWING IS FORMATTED TO BE PRINTED AT 24"x36"



1 1/2"=1'-0"
 3/4"=1'-0"
 1/2"=1'-0"
 1/4"=1'-0"
 1/8"=1'-0"

1 LIGHTING FIRST FLOOR PLAN
 SCALE: 1/4"=1'-0"

HARRY F. CARSON
 PROFESSIONAL ENGINEER
 NJ LICENSE NUMBER 45514
 EXP: 04/30/2026

NJ COA NUMBER 24GA27940200

PMH ASSOCIATES, INC.
 MECHANICAL, ELECTRICAL & FIRE PROTECTION ENGINEERING
 1217 N CHURCH ST. STE B MOORESTOWN, NJ 08057
 (856) 273-0554 • FAX (856) 273-7701 • PMH@PMH-ASSOCIATES.COM

EIC: PC: PM: DD:

CODE REVIEW:

CERTIFICATE:

spiezie

SPIEZLE ARCHITECTURAL GROUP INC.
 121 MARKET STREET
 CAMDEN, NJ 08102
 PHONE: (856) 974 7666

SIGNATURE:
 THOMAS S. PERRINO 21A01925400
 SCOTT E. DOMNE 21A01914400
 STEVEN LIONE 21A0177000
 STEVEN G. SEIGEL 21A01944200
 ANGELO ALBERTO 21A01946700
 JOHN F. WRIGHT 21A01784200
 SPIEZLE ARCHITECTURAL GROUP, INC. 21A020053000

SEAL:

BID SET - 06/25/2024

PROJECT:

HADDONFIELD POLICE STATION
 1 WALNUT STREET, HADDONFIELD, NJ 08033
 FOR
CAMDEN COUNTY IMPROVEMENT AUTHORITY
 520 MARKET STREET, 6TH FLOOR,
 CAMDEN, NEW JERSEY 08102

FOR CODE REVIEW: 02/23/24

REVISIONS:

REVISION NAME	DATE
A	

FOR BID: 06/25/2024

DRAWING TITLE:

FIRST FLOOR LIGHTING PLAN

COMMISSION NUMBER:
23M014

DO NOT SCALE THE DRAWINGS

DRAWING NUMBER:
E2.0

THIS DRAWING IS FORMATTED TO BE PRINTED AT 24"x36"

CODE REVIEW:

CERTIFICATE:



SPIEZIE ARCHITECTURAL GROUP INC.
121 MARKET STREET
CAMDEN, NJ 08102
PHONE: (856) 974 7666

SIGNATURE:
THOMAS S. PERRINO 21A01925400
SCOTT E. DOMNE 21A01914400
STEVEN LIONE 21A0171000
STEVEN G. SEGEL 21A0194400
ANGILO ALBERTO 21A0194000
JOHN F. WRIGHT 21A0178400
SPIEZIE ARCHITECTURAL GROUP, INC. 21A02005000

SEAL:

BID SET - 06/25/2024

PROJECT:

HADDONFIELD POLICE STATION
1 WALNUT STREET, HADDONFIELD, NJ 08033
FOR
CAMDEN COUNTY IMPROVEMENT AUTHORITY
520 MARKET STREET, 6TH FLOOR, CAMDEN, NEW JERSEY 08102

FOR CODE REVIEW: 02/23/24

REVISIONS:

REVISION NAME	DATE
A	

FOR BID: 06/25/2024

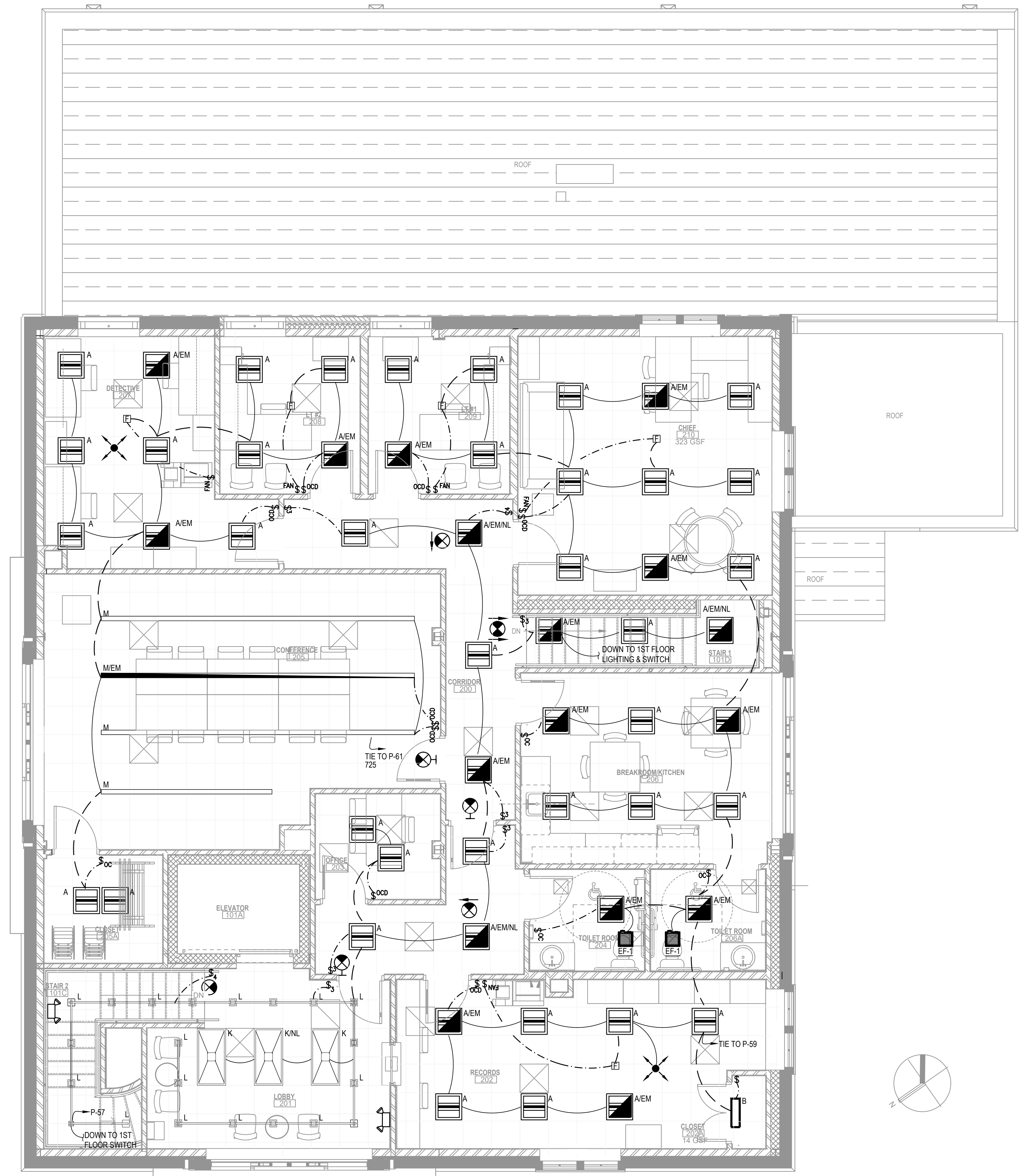
DRAWING TITLE:

SECOND FLOOR LIGHTING PLAN

COMMISSION NUMBER:
23M014

DO NOT SCALE THE DRAWINGS

DRAWING NUMBER:
E2.1



1 LIGHTING SECOND FLOOR PLAN
SCALE: 1/4"=1'-0"

HARRY F. CARSON
PROFESSIONAL ENGINEER
NJ LICENSE NUMBER 45514
EXP: 04/30/2026

NJ COA NUMBER 24GA27840200

PMH ASSOCIATES, INC.
MECHANICAL, ELECTRICAL & FIRE PROTECTION ENGINEERING
1217 N CHURCH ST. STE B MOORESTOWN, NJ 08057
(856) 273-0554 • FAX: (856) 273-7701 • PMH@PMH-ASSOCIATES.COM

EIC: PC: PM: DD:

1 1/2"=1'-0"
3/4"=1'-0"
1/2"=1'-0"
1/4"=1'-0"
1/8"=1'-0"

THIS DRAWING IS FORMATTED TO BE PRINTED AT 24"x36"

1 1/2"=1'-0"
 1"=1'-0"
 3/4"=1'-0"
 3/8"=1'-0"
 1/2"=1'-0"
 1/4"=1'-0"
 1/8"=1'-0"
 1/16"=1'-0"

REMOTE BATTERY CABINET NOTE

THE FIRE ALARM INSTALLATION CONTRACTOR SHALL BE RESPONSIBLE FOR PROVIDING AND INSTALLING REMOTE BATTERY CABINET(S) WITH CHARGING CAPABILITY FOR ALL VISABLE AND AUDIBLE DEVICES AND FIRE / SMOKE DAMPERS AS REQUIRED WHEN BATTERY CAPACITY WITHIN THE MAIN FIRE ALARM CONTROL PANEL IS EXCEEDED.

THE ACTUAL NUMBER AND CAPACITY OF THE MAIN AND REMOTE POWER SUPPLIES REQUIRED IS COMENSURATE WITH THE TYPE AND STYLE OF SYSTEM PROPOSED AND INSTALLED BY THIS CONTRACTOR.

THIS CONTRACTOR SHALL COORDINATE AND BE RESPONSIBLE FOR ALL REQUIREMENTS FOR ADDITIONAL 120 VOLT BRANCH CIRCUITS AS NECESSARY FOR A COMPLETE FIRE ALARM CONTROL SYSTEM.

FIRE ALARM ELEVATOR NOTES

THE SMOKE DETECTORS LOCATED IN THE ELEVATOR SHAFT(S), ELEVATOR MECHANICAL ROOM(S) AND OUTSIDE EACH ELEVATOR DOOR SHALL BE CONNECTED TO THE ELEVATOR CONTROLLER FOR "PHASE ONE OPERATION".

IF ELEVATOR IS A TRACTION TYPE WITHOUT SPRINKLER COVERAGE IN THE SHAFT THEN A SHUNT TRIP IS NOT REQUIRED.

ALL FIRE DETECTION DEVICES SHALL ALSO BE CONNECTED TO THE FACP. COORDINATE ACTUAL ELEVATOR POWER REQUIREMENTS WITH ELEVATOR MANUFACTURER. PROVIDE AND INSTALL APPROPRIATE SIZE SHUNT TRIP CIRCUIT BREAKER AND DISCONNECT(S).

COPS WIRING METHODS NOTE

SEE NEC ARTICLE 708.14 FOR PERMITTED WIRING METHODS AND REQUIREMENTS

FIRE ALARM LEGEND

SYMBOL	DESCRIPTION
	SYSTEM SMOKE DETECTOR
	CARBON MONOXIDE DETECTOR
	COMBINATION FIXED TEMP HEAT AND RATE OF RISE DETECTOR
	HORN/STROBE (STROBE LIGHT INTENSITY AS INDICATED)
	STROBE ONLY (STROBE LIGHT INTENSITY AS INDICATED)
	PULL STATION
	FLOW SWITCH
	TAMPER SWITCH
	DUCT-SMOKE DETECTOR INSTALL IN SUPPLY DUCT WORK
	REMOTE RESET SWITCH LOCATE AS SHOWN ON PLAN
	ANNUNCIATOR - 40 CHARACTER DISPLAY
	FIRE ALARM CONTROL PANEL - BASIS OF DESIGN: SILENT KNIGHT, FIRE-LITE AND NOTIFIER.

FIRE ALARM NOTES

- ALL ELECTRICAL WORK SHALL BE IN STRICT ACCORDANCE WITH THE NEW JERSEY UNIFORM CONSTRUCTION CODE, THE NATIONAL ELECTRICAL CODE (NFPA-70), NATIONAL FIRE ALARM CODE (NFPA-72) AND LOCAL ORDINANCES.
 - THESE DRAWINGS ARE DIAGRAMMATIC AND SPECIFY THE TYPE, RATING AND LOCATION FOR FIRE ALARM DEVICES. THE FIRE ALARM INSTALLER SHALL BE RESPONSIBLE FOR PROVIDING SHOP DRAWINGS BASED ON THESE PLANS. SHOP DRAWINGS SHALL ALSO BE SUBMITTED TO THE AUTHORITY HAVING JURISDICTION FOR CONSTRUCTION PERMIT APPROVALS. SHOP DRAWINGS SHALL CONTAIN ALL INFORMATION AS OUTLINED IN THE "INTERNATIONAL BUILDING CODE" SECTION 907 AND AS REQUIRED BY THE PLAN REVIEW OFFICIAL.
 - ONLY NON-PROPRIETARY FIRE ALARM SYSTEMS WILL BE ACCEPTED. ALL PASSWORDS AND ACCESS CODES SHALL BE PROVIDED TO THE OWNER AT COMPLETION OF INSTALLATION.
 - ALL CONDUCTORS SHALL BE COPPER. ALUMINUM WIRE WILL NOT BE ACCEPTED.
 - THE INSTALLATION OF ALL WIRING, CABLE AND EQUIPMENT SHALL BE IN ACCORDANCE WITH THE NFPA-70, NATIONAL ELECTRICAL CODE, AND SPECIFICALLY WITH ARTICLE 760, ARTICLE 770, ARTICLE 708.14 AND ARTICLE 800, WHERE APPLICABLE.
 - ALL CIRCUITS SHALL BE MINIMUM WIRE SIZE OF #16 AWG.
 - IN ACCORDANCE WITH NEC ARTICLE 110.3(B); LISTED OR LABELED EQUIPMENT SHALL BE INSTALLED AND USED IN ACCORDANCE WITH ANY INSTRUCTIONS INCLUDED IN THE LISTING AND LABELING. EQUIPMENT DOCUMENTATION SHALL BE PRESENTED TO THE INSPECTION OFFICIAL.
 - FIRE ALARM CONTROL PANEL AND DEVICE INSTALLATION SHALL COMPLY WITH ICC/ANSI 117A.1 2017 AND ALL OTHER ADA CODES AND REQUIREMENTS.
 - PULL STATIONS SHALL BE MOUNTED AT 48" AFF TO THE TOP OF THE BOX. THE PULL LEVER MUST BE LOCATED BELOW 48" AFF.
 - STROBE AND /HORN/STROBES SHALL BE MOUNTED AT 80" AFF OR 6" BELOW THE CEILING WHICHEVER IS LOWER. ALL STROBES SHALL HAVE A SYNCHRONIZED FLASH.
 - DETECTORS SHALL NOT BE LOCATED CLOSER THAN (3) FEET FROM VENTILATION REGISTERS.
 - IN ACCORDANCE WITH NEC ARTICLES 760.3(A) AND 308.21: THE ACCESSIBLE PORTION OF ABANDONED FIRE ALARM CABLES SHALL BE REMOVED AND OPENINGS AROUND ELECTRICAL PENETRATIONS THRU FIRE RATED WALLS, PARTITIONS, FLOORS OR CEILINGS SHALL BE FIRESTOPPED USING APPROVED METHODS.
 - IN ACCORDANCE WITH NEC 760.53 FIRE ALARM CIRCUITS SHALL BE IDENTIFIED AT TERMINAL AND JUNCTION LOCATIONS. THE LABEL "FIRE ALARM CIRCUITS OR WIRING" SHALL BE SHALL BE APPLIED.
 - IN ACCORDANCE WITH NFPA 72: 4.4.1.3: THE SUPPLY OF PRIMARY POWER SHALL BE A DEDICATED BRANCH CIRCUIT. THE DEDICATED CIRCUIT AND CONNECTIONS SHALL BE MECHANICALLY PROTECTED. CIRCUIT DISCONNECTING MEANS SHALL HAVE A RED MARKING, BE ACCESSIBLE ONLY TO AUTHORIZED PERSONNEL, AND SHALL BE IDENTIFIED AS "FIRE ALARM CIRCUIT", AND THE CIRCUIT DISCONNECTING MEANS SHALL BE PERMANENTLY IDENTIFIED AT THE FIRE ALARM CONTROL UNIT.
 - ROOMS OR CLOSETS WHERE THE FIRE ALARM CONTROL UNIT IS INSTALLED SHALL HAVE A PERMANENT LABEL OR PLACARD STATING "FIRE ALARM PANEL" ON THE EXTERIOR OF THE DOOR.
 - CONTRACTOR SHALL VERIFY ALL DIMENSIONS PRIOR TO BEGINNING WORK.
 - DUCT SMOKE DETECTORS ARE NORMALLY REQUIRED IN AIR HANDLING UNITS WITH RATING OF 2000 CFM OR GREATER. VERIFY REQUIREMENT WITH ENGINEER IF NOT SHOWN.
 - SMOKE DAMPERS AND FIRE / SMOKE COMBINATION DAMPERS SHALL BE CONNECTED TO AND INITIATED BY THE FIRE ALARM CONTROL SYSTEM. INTERIOR DOORS WITH MAGNETIC LOCKS SHALL BE CONNECTED TO AND RELEASED BY THE FIRE ALARM SYSTEM. INCLUDE DAMPER AND MAGNETIC DOOR LOCK POWER REQUIREMENTS IN BATTERY CALCULATIONS.
- AFG - ABOVE FINISHED GRADE
 UON - UNLESS OTHERWISE NOTED
 ETR - EXISTING TO REMAIN

HARRY F. CARSON
 PROFESSIONAL ENGINEER
 NJ LICENSE NUMBER 45514
 EXP: 04/30/2026

NJ COA NUMBER 24GA27940200

PMH ASSOCIATES, INC.
 MECHANICAL, ELECTRICAL & FIRE PROTECTION ENGINEERING
 1217 N CHURCH ST. STE B MOORESTOWN, NJ 08057
 (856) 273-0554 • FAX: (856) 273-7701 • PMH@PMH-ASSOCIATES.COM

EIC: PC: PM: DD:

CODE REVIEW:

CERTIFICATE:



SPIEZLE ARCHITECTURAL GROUP INC.
 121 MARKET STREET
 CAMDEN, NJ 08102
 PHONE: (856) 974 7666

SIGNATURE:
 THOMAS S. PERRINO 21A01925400
 SCOTT E. DOWNE 21A01914400
 STEVEN LIGONE 21A01710100
 STEVEN G. SEGEL 21A01964200
 ANGELO ALBERTO 21A01968700
 JOHN F. WRIGHT 21A01784200
 SPIEZLE ARCHITECTURAL GROUP, INC. 21A02005300

SEAL:

BID SET - 06/25/2024

PROJECT:
HADDONFIELD POLICE STATION
 1 WALNUT STREET, HADDONFIELD, NJ 08033
 FOR
CAMDEN COUNTY IMPROVEMENT AUTHORITY
 520 MARKET STREET, 6TH FLOOR, CAMDEN, NEW JERSEY 08102

FOR CODE REVIEW: 02/23/24

REVISIONS:

REVISION NAME	DATE

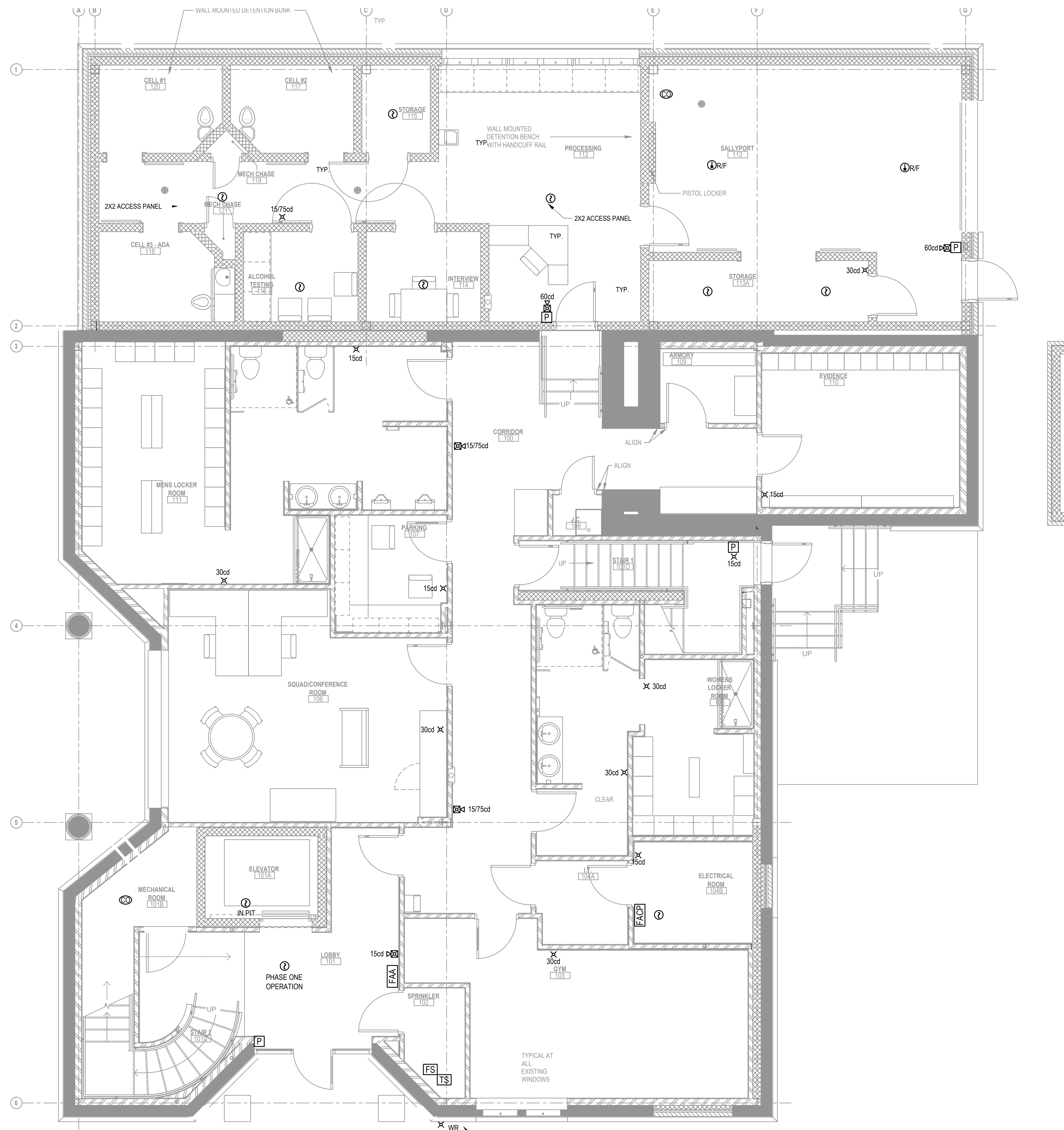
FOR BID: 06/25/2024

DRAWING TITLE:
FIRE ALARM NOTES

COMMISSION NUMBER:
23M014

DO NOT SCALE THE DRAWINGS
 DRAWING NUMBER:
E3.0

THIS DRAWING IS FORMATTED TO BE PRINTED AT 24"x36"



1 FIRE ALARM FIRST FLOOR PLAN
SCALE: 1/4"=1'-0"

HARRY F. CARSON
PROFESSIONAL ENGINEER
NJ LICENSE NUMBER 45514
EXP: 04/30/2026

NJ COA NUMBER 24GA27940200

PMH ASSOCIATES, INC.
MECHANICAL, ELECTRICAL & FIRE PROTECTION ENGINEERING
1217 N CHURCH ST. STE B MOORESTOWN, NJ 08057
(856) 273-0554 • FAX (856) 273-7701 • PMH@PMH-ASSOCIATES.COM

EIC: PC: PM: DD:

CODE REVIEW:

CERTIFICATE:

spiezie

SPIEZLE ARCHITECTURAL GROUP INC.
121 MARKET STREET
CAMDEN, NJ 08102
PHONE: (856) 974 7666

SIGNATURE:
THOMAS S. PERRINO 21A01925400
SCOTT E. DOMNE 21A01974400
STEVEN LICONE 21A0177000
STEVEN G. SEGEL 21A01944200
ANGELO ALBERTO 21A01940700
JOHN F. WRIGHT 21A01784200
SPIEZLE ARCHITECTURAL GROUP, INC. 21A020053000

SEAL:

BID SET - 06/25/2024

PROJECT:

HADDONFIELD POLICE STATION
1 WALNUT STREET, HADDONFIELD, NJ 08033
FOR
CAMDEN COUNTY IMPROVEMENT AUTHORITY
520 MARKET STREET, 6TH FLOOR, CAMDEN, NEW JERSEY 08102

FOR CODE REVIEW: 02/23/24

REVISIONS:

REVISION NAME	DATE
A	

FOR BID: 06/25/2024

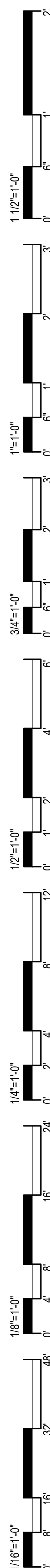
DRAWING TITLE:

FIRST FLOOR FIRE ALARM PLAN

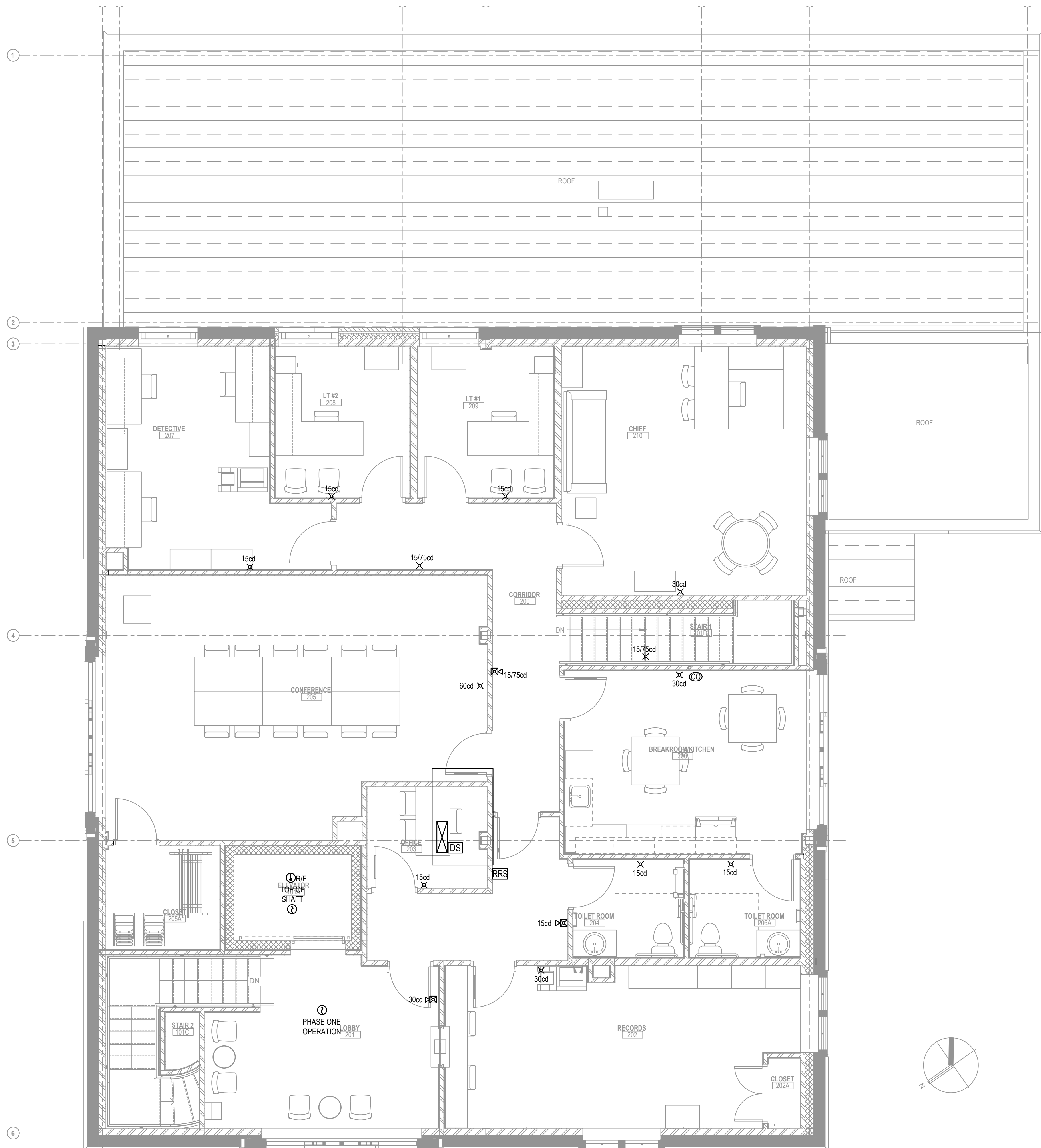
COMMISSION NUMBER:
23M014

DO NOT SCALE THE DRAWINGS

DRAWING NUMBER:
E3.1



THIS DRAWING IS FORMATTED TO BE PRINTED AT 24"x36"



1 FIRE ALARM SECOND FLOOR PLAN
SCALE: 1/4"=1'-0"

HARRY F. CARSON
PROFESSIONAL ENGINEER
NJ LICENSE NUMBER 45514
EXP: 04/30/2026

NJ COA NUMBER 24GA27840200

PMH ASSOCIATES, INC.
MECHANICAL, ELECTRICAL & FIRE PROTECTION ENGINEERING
1217 N CHURCH ST. STE B MOORESTOWN, NJ 08057
(856) 273-0554 • FAX: (856) 273-7701 • PMH@PMH-ASSOCIATES.COM

EIC: PC: PM: DD:

CODE REVIEW:

CERTIFICATE:

spiezie

SPIEZLE ARCHITECTURAL GROUP INC.
121 MARKET STREET
CAMDEN, NJ 08102
PHONE: (856) 974 7666

SIGNATURE:
THOMAS S. PERRINO 21A01925400
SCOTT E. DOMNE 21A01974400
STEVEN LIGONE 21A01970000
STEVEN G. SEGEL 21A01964200
ANGILO ALBERTO 21A01968700
JOHN F. WRIGHT 21A019784000
SPIEZLE ARCHITECTURAL GROUP, INC. 21A020053000

SEAL:

BID SET - 06/25/2024

PROJECT:

HADDONFIELD POLICE STATION
1 WALNUT STREET, HADDONFIELD, NJ 08033
FOR
CAMDEN COUNTY IMPROVEMENT AUTHORITY
520 MARKET STREET, 6TH FLOOR, CAMDEN, NEW JERSEY 08102

FOR CODE REVIEW: 02/23/24

REVISIONS:

REVISION NAME	DATE
A	

FOR BID: 06/25/2024

DRAWING TITLE:

SECOND FLOOR FIRE ALARM PLANS

COMMISSION NUMBER:
23M014

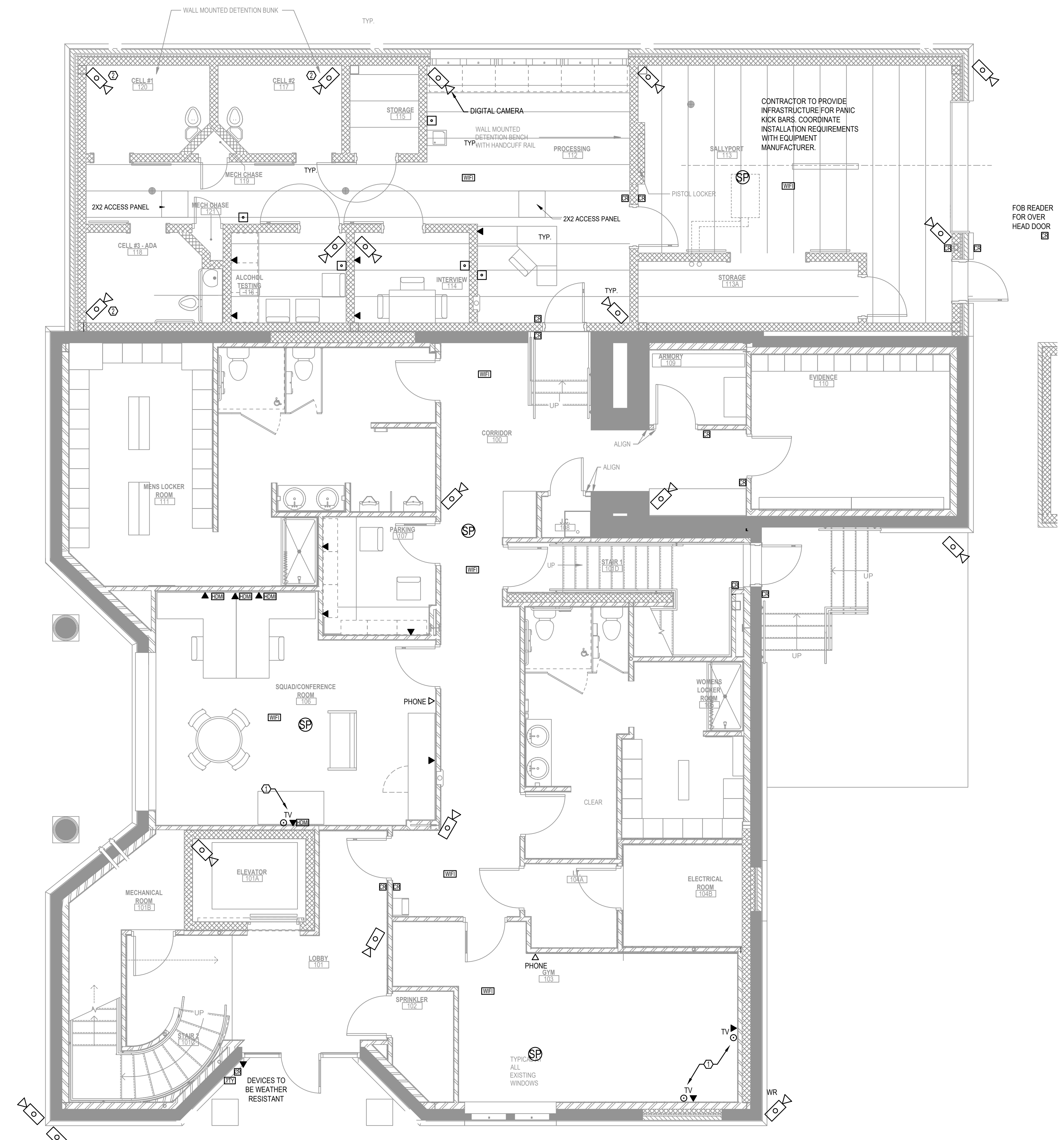
DO NOT SCALE THE DRAWINGS

DRAWING NUMBER:
E3.2

1 1/2"=1'-0"
1"=1'-0"
3/4"=1'-0"
1/2"=1'-0"
1/4"=1'-0"
1/8"=1'-0"
1/16"=1'-0"

THIS DRAWING IS FORMATTED TO BE PRINTED AT 24"x36"

1 1/2"=1'-0"
 3/4"=1'-0"
 1/2"=1'-0"
 1/4"=1'-0"
 1/8"=1'-0"
 1/16"=1'-0"



COPS WIRING METHODS
 SEE NEC ARTICLE 708.14 FOR PERMITTED WIRING METHODS AND REQUIREMENTS

TELCO / DATA NOTES

CR	CARD READER
TTW	TELETYPEWRITER
PB	PANIC BUTTON
TR	TELEPHONE (CAT 6)
FBD	FLOOR BOX WITH POWER & DATA
HDM	HDMI
SPK	SPEAKER
CA	CAMERA (CAT 6)
DT	DATA (CAT 6)
CC	COAXIAL CABLE
JB	JUNCTION BOX
WAP	WIFI ACCESS POINTS

THE GENERAL CONTRACTOR SHALL BE RESPONSIBLE FOR PROVIDING EMPTY CONDUITS WITH PULL STRINGS AND OUTLET BOXES FOR ALL DATA, TELEPHONE, SECURITY, CARD READERS, ETC.

ALL CONDUITS SHALL TERMINATE ABOVE THE CEILING IN AREAS WITH CEILINGS AND AT THE BAR JOIST ELEVATION IN AREAS WITHOUT CEILINGS.

THE GC SHALL BE RESPONSIBLE FOR COORDINATING ALL FINAL DATA LOCATIONS AND ELEVATIONS WITH PROJECT SUPERINTENDENT AND OR OWNER PRIOR TO INSTALLATION.

ALL FLOOR BOXES TO BE CONNECTED TO 3/4" PVC CONDUITS RUN UNDER THE FLOOR FROM THE FLOOR BOX TO THE NEAREST INTERIOR WALL AND THEN TERMINATE ABOVE THE CEILING IN AREAS WITH CEILINGS AND AT THE BAR JOIST ELEVATION IN AREAS WITHOUT CEILINGS FOR BOTH DATA AND POWER. PROVIDE PULL CORDS IN EMPTY DATA CONDUITS.

KEY NOTES

- COORDINATE MOUNTING HEIGHT WITH ARCHITECT/OWNER PRIOR TO INSTALLATION
- VANDAL RESISTANT ABUSE PROOF CAMERA

HARRY F. CARSON
 PROFESSIONAL ENGINEER
 NJ LICENSE NUMBER 45514
 EXP: 04/30/2026

NJ COA NUMBER 24GA27940200

PMH ASSOCIATES, INC.
 MECHANICAL, ELECTRICAL & FIRE PROTECTION ENGINEERING
 1217 N CHURCH ST. STE B MOORESTOWN, NJ 08057
 (856) 273-0554 • FAX: (856) 273-7701 • PMH@PMH-ASSOCIATES.COM

EIC: PC: PM: DD:

1 ELECTRICAL SPECIAL SYSTEMS FIRST FLOOR PLAN
 SCALE: 1/4"=1'-0"

CODE REVIEW:

CERTIFICATE:



SPIEZLE ARCHITECTURAL GROUP INC.
 121 MARKET STREET
 CAMDEN, NJ 08102
 PHONE: (856) 974 7666

SIGNATURE:
 THOMAS S. PERRINO 21A01925400
 SCOTT E. DONNE 21A01914400
 STEVEN L. IONE 21A0171000
 STEVEN G. SEGEL 21A01944200
 ANGELO ALBERTO 21A01940700
 JOHN F. WRIGHT 21A01784200
 SPIEZLE ARCHITECTURAL GROUP, INC. 21A02005300

SEAL:

BID SET - 06/25/2024

PROJECT:
HADDONFIELD POLICE STATION
 1 WALNUT STREET, HADDONFIELD, NJ 08033
 FOR
CAMDEN COUNTY IMPROVEMENT AUTHORITY
 520 MARKET STREET, 6TH FLOOR, CAMDEN, NEW JERSEY 08102

FOR CODE REVIEW: 02/23/24

REVISIONS:

REVISION NAME	DATE
A	

FOR BID: 06/25/2024

DRAWING TITLE:
SPECIAL SYSTEMS FIRST FLOOR PLAN

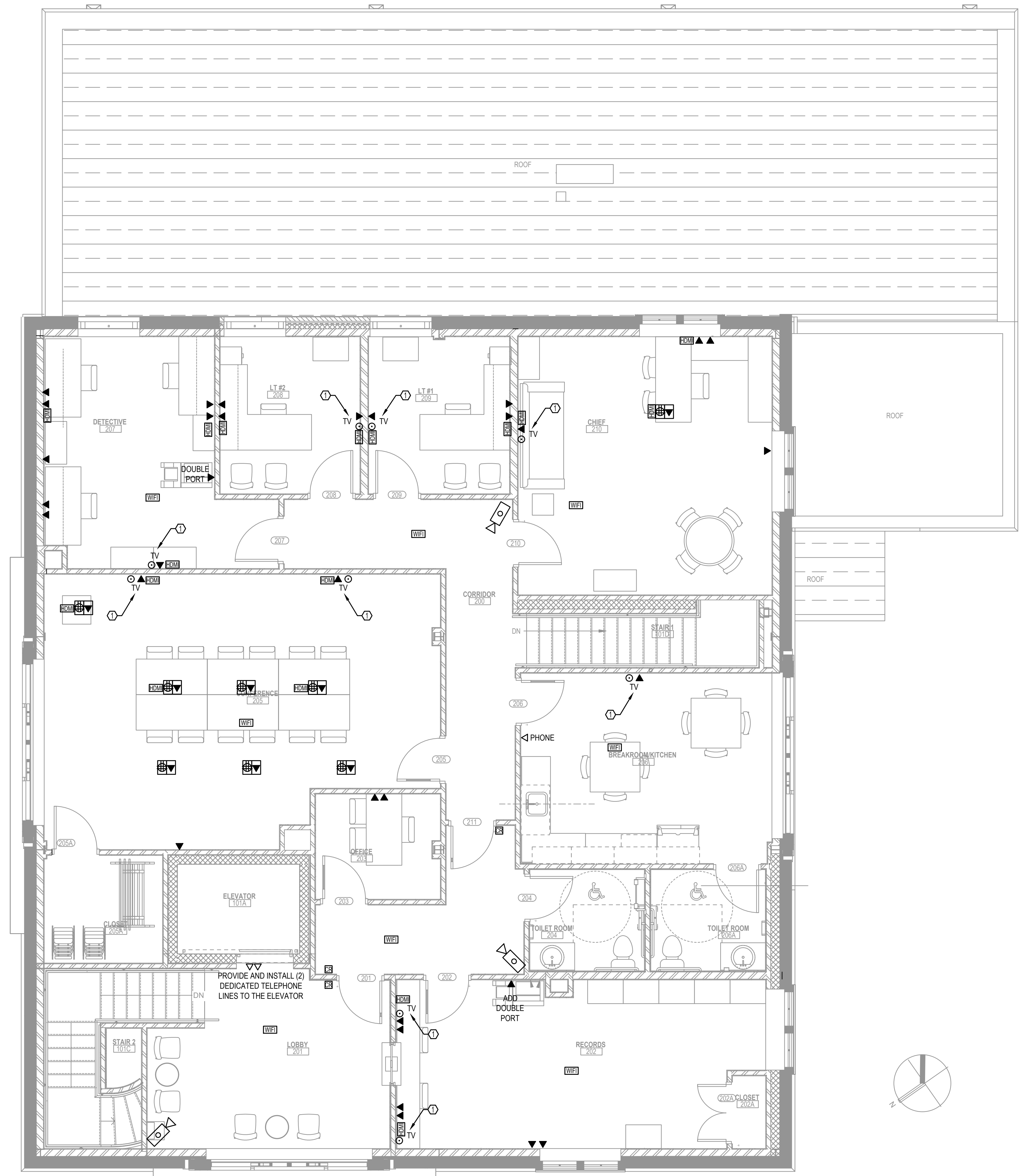
COMMISSION NUMBER:
23M014

DO NOT SCALE THE DRAWINGS

DRAWING NUMBER:
E4.0

THIS DRAWING IS FORMATTED TO BE PRINTED AT 24"x36"

1 1/2"=1'-0"
 3/4"=1'-0"
 1/2"=1'-0"
 1/4"=1'-0"
 1/8"=1'-0"
 1/16"=1'-0"



TELCO / DATA NOTES	
[Symbol]	CARD READER
[Symbol]	TELETYPEWRITER
[Symbol]	PANIC BUTTON
[Symbol]	TELEPHONE (CAT 6)
[Symbol]	FLOOR BOX WITH POWER & DATA
[Symbol]	HDMI
[Symbol]	SPEAKER
[Symbol]	CAMERA (CAT 6)
[Symbol]	DATA (CAT 6)
[Symbol]	COAXIAL CABLE
[Symbol]	JUNCTION BOX
[Symbol]	WIFI ACCESS POINTS

THE GENERAL CONTRACTOR SHALL BE RESPONSIBLE FOR PROVIDING EMPTY CONDUITS WITH PULL STRINGS AND OUTLET BOXES FOR ALL DATA, TELEPHONE, SECURITY, CARD READERS, ETC.

ALL CONDUITS SHALL TERMINATE ABOVE THE CEILING IN AREAS WITH CEILINGS AND AT THE BAR JOIST ELEVATION IN AREAS WITHOUT CEILINGS.

THE GC SHALL BE RESPONSIBLE FOR COORDINATING ALL FINAL DATA LOCATIONS AND ELEVATIONS WITH PROJECT SUPERINTENDENT AND OR OWNER PRIOR TO INSTALLATION.

ALL FLOOR BOXES TO BE CONNECTED TO 3/4" PVC CONDUITS RUN UNDER THE FLOOR FROM THE FLOOR BOX TO THE NEAREST INTERIOR WALL AND THEN TERMINATE ABOVE THE CEILING IN AREAS WITH CEILINGS AND AT THE BAR JOIST ELEVATION IN AREAS WITHOUT CEILINGS FOR BOTH DATA AND POWER. PROVIDE PULL CORDS IN EMPTY DATA CONDUITS.

KEY NOTES	
①	COORDINATE MOUNTING HEIGHT WITH ARCHITECT/OWNER PRIOR TO INSTALLATION

1 ELECTRICAL SPECIAL SYSTEMS SECOND FLOOR PLAN
 SCALE: 1/4"=1'-0"

HARRY F. CARSON
 PROFESSIONAL ENGINEER
 NJ LICENSE NUMBER 45514
 EXP: 04/30/2026

NJ COA NUMBER 24GA27940200

PMH ASSOCIATES, INC.
 MECHANICAL, ELECTRICAL & FIRE PROTECTION ENGINEERING
 1217 N CHURCH ST. STE B MOORESTOWN, NJ 08057
 (856) 273-0554 • FAX (856) 273-7701 • PMH@PMH-ASSOCIATES.COM

EIC: PC: PM: DD:

CODE REVIEW:

CERTIFICATE:

spiezie

SPIEZLE ARCHITECTURAL GROUP INC.
 121 MARKET STREET
 CAMDEN, NJ 08102
 PHONE: (856) 974 7666

SIGNATURE:
 THOMAS S. PERRINO 21A01925400
 SCOTT E. DOMNE 21A01974400
 STEVEN LICONE 21A0177000
 STEVEN G. SEGEL 21A01944200
 ANGELO ALBERTO 21A01940700
 JOHN F. WRIGHT 21A01784200
 SPIEZLE ARCHITECTURAL GROUP, INC. 21A020053000

SEAL:

BID SET - 06/25/2024

PROJECT:

HADDONFIELD POLICE STATION
 1 WALNUT STREET, HADDONFIELD, NJ 08033
 FOR
CAMDEN COUNTY IMPROVEMENT AUTHORITY
 520 MARKET STREET, 6TH FLOOR, CAMDEN, NEW JERSEY 08102

FOR CODE REVIEW: 02/23/24

REVISIONS:	REVISION NAME	DATE
1		

FOR BID: 06/25/2024

DRAWING TITLE:

SPECIAL SYSTEMS SECOND FLOOR PLAN

COMMISSION NUMBER:
23M014

DO NOT SCALE THE DRAWINGS

DRAWING NUMBER:
E4.1

THIS DRAWING IS FORMATTED TO BE PRINTED AT 24"x36"