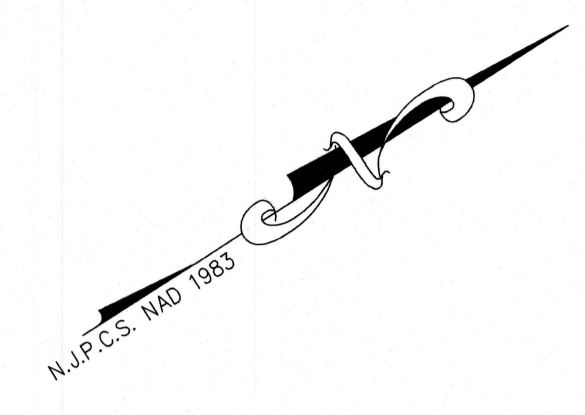


BLOCK 5906
LOT 21



RVE
1901
REMINGTON & VERNICK ENGINEERS
2059 SPRINGDALE ROAD
CHERRY HILL, NJ 08003
(856) 795-9595, FAX (856) 795-1882
WEB ADDRESS: RVE.COM
Certification of Authorization: 24 GA 28003300
Excellence • Innovation • Service

Dennis K. Yoder
DATE: 9/4/24
DENNIS K. YODER
NJ PROFESSIONAL ENGINEER LIC. No. 31866

DATE:
STEPHANIE A. CUTHBERT
NJ PROFESSIONAL ENGINEER LIC. No. 42136

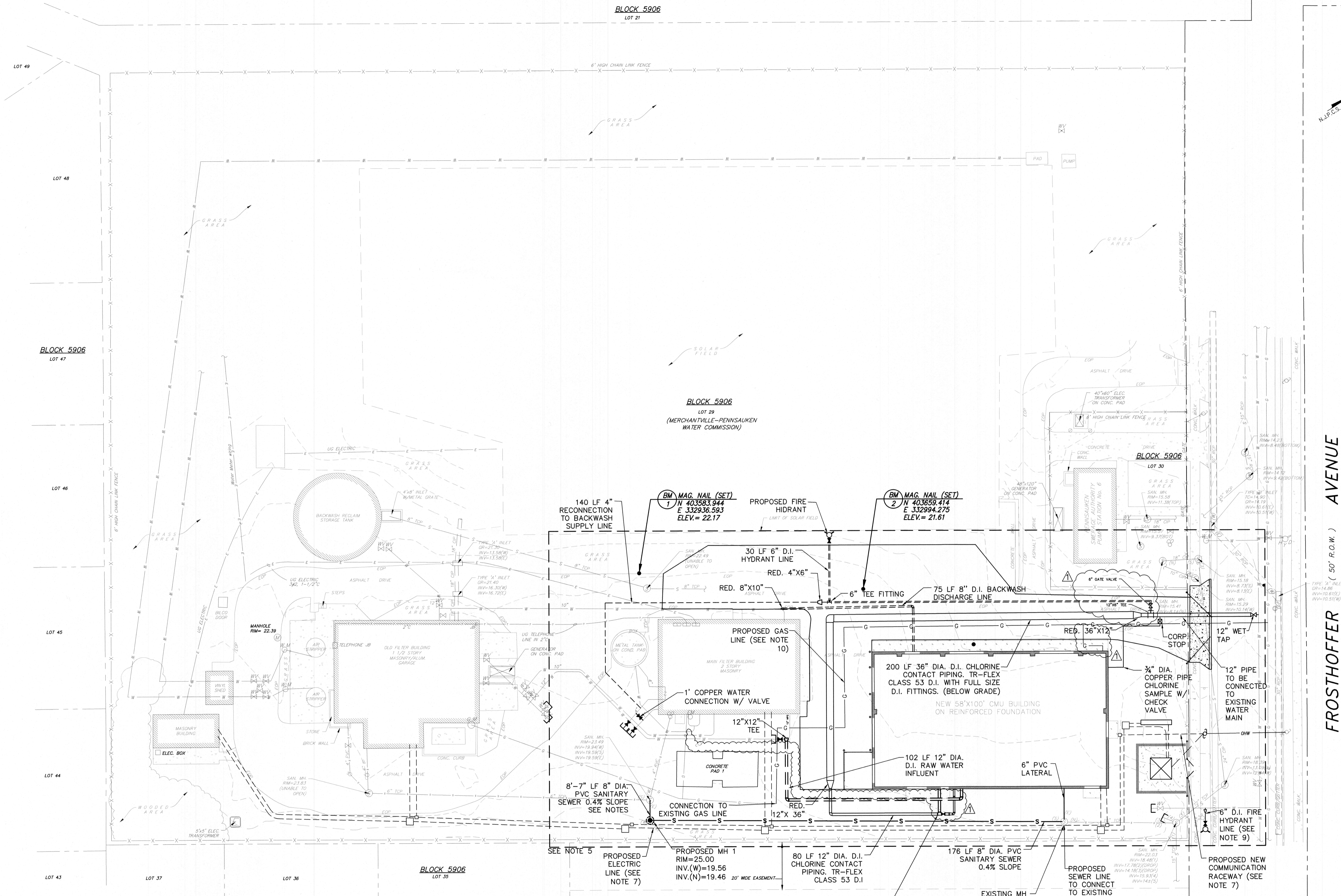
PLANS WHICH DO NOT BEAR AN EMBOSSED SEAL ARE NOT VALID.

ALL DOCUMENTS PREPARED BY REMINGTON & VERNICK ENGINEERS AND AFFILIATES ARE INSTRUMENTS OF SERVICE IN RESPECT OF THE PROJECT. THEY ARE NOT INTENDED OR REPRESENTED TO BE SUITABLE FOR REUSE BY OWNER OR OTHERS ON EXTENSIONS OF THE PROJECT OR ON ANY OTHER PROJECT. ANY REUSE WITHOUT WRITTEN VERIFICATION OR ADAPTATION BY REMINGTON & VERNICK ENGINEERS AND AFFILIATES FOR THE SPECIFIC PURPOSE INTENDED WILL BE AT OWNERS SOLE RISK AND WITHOUT LIABILITY OR LEGAL EXPOSURE TO REMINGTON & VERNICK ENGINEERS AND AFFILIATES. OWNER SHALL INDEMNIFY AND HOLD HARMLESS REMINGTON & VERNICK ENGINEERS AND AFFILIATES FROM ALL CLAIMS, DAMAGES, LOSSES AND EXPENSES ARISING OUT OF OR RESULTING THEREFROM.

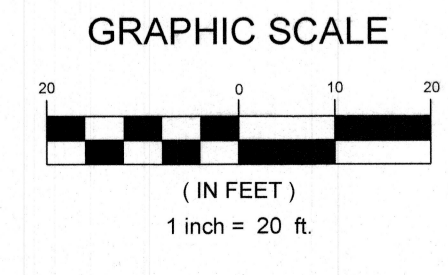
NO.	REVISION	DATE	BY
1	DESIGN CHANGE PER ADDENDUM 2	08/19/25	FM, JM

PROPOSED UTILITY PLAN
MERCHANTVILLE PENNSAUKEN WATER COMMISSION
BROWNING ROAD
WATER TREATMENT PLANT IMPROVEMENTS
CAMDEN COUNTY
PENNSAUKEN TOWNSHIP
NEW JERSEY

DRAWN BY	DESIGN BY	CHECKED BY	SCALE
FM	FM	JM	AS NOTED
DATE:	SHEET NO.:		C-5
3/24	42		
JOB NO.:	6424M081		



- NOTES:**
- PROVIDE WATERTIGHT GASKET FOR NEW CONNECTION AND MODIFY EXISTING CHANNEL, SEE DETAIL ON SHEET D-1
 - THE CONTRACTOR SHALL SUPPLY AND INSTALL ALL FITTING TO GO FROM THE 12" DIAMETER TO THE 36" DIAMETER CHLORINE CONTACT PIPE.
 - CONTRACTOR SHALL MAINTAIN THE MINIMUM COVER TO PROVIDE THE REQUIRED SEPARATION BETWEEN THE SANITARY AND THE WATER LINE.
 - CONTRACTOR TO VERIFY LOCATION OF EXISTING UTILITY AND TAKE ALL NECESSARY PRECAUTIONS NOT TO DAMAGE AND AVOID CONFLICT.
 - ENLARGEMENT OF BOXED AREA IS SHOWN ON SHEET C-6
 - CONTRACTOR TO INSTALL THE PROPOSED SEWER LINE AND MANHOLE AFTER THE EXISTING 14" WATER MAIN IS DISCONNECTED AND ABANDONED IN PLACE (SEE PROPOSED DEMOLITION SITE PLAN C-2).
 - CONTRACTOR TO BE AWARE OF THE SPACING AND TAKE ALL THE NECESSARY PRECAUTIONS NOT TO THE DAMAGE THE PROPOSED DUCT BANK PLACED CLOSE TO THE FENCE LINE (SEE PP-2, PP-3 AND ELECTRICAL PLANS).
 - CONNECTION TO BE CORE DRILLED WITH WATER TIGHT GASKET.
 - FIRE HYDRANT LINE COMPLETE OF WET TAP, 14"x6" REDUCER FITTING, 6" VALVE AND HYDRANT.
 - CONTRACTOR SHALL COORDINATE WITH THE LOCAL UTILITY FOR THE RELOCATION OF THE EXISTING UNDERGROUND GAS LINE. ONLY THE SECTION OF THE EXISTING GAS LINE SHOWN ON THE PROPOSED DEMOLITION PLAN (C-2) PLAN SHALL BE RELOCATED. THE NEW PROPOSED GAS LINE SHALL CONNECT TO THE EXISTING GAS SERVICE, AS SHOWN ON THIS PLAN.



RVE
1901
REMINGTON & VERNICK ENGINEERS
2059 SPRINGDALE ROAD
CHERRY HILL, NJ 08003
(856) 795-9595, FAX (856) 795-1882
WEB ADDRESS : RVE.COM
Certification of Authorization: 24 GA 28003300
Excellence • Innovation • Service

DATE: 9/14/24
DENNIS K. YODER
NJ PROFESSIONAL ENGINEER LIC. No. 31866

DATE:
STEPHANIE A. CUTHBERT
NJ PROFESSIONAL ENGINEER LIC. No. 42136

PLANS WHICH DO NOT BEAR AN EMBOSSED SEAL ARE NOT VALID

ALL DOCUMENTS PREPARED BY REMINGTON & VERNICK ENGINEERS AND AFFILIATES ARE INSTRUMENTS OF SERVICE IN RESPECT OF THE PROJECT THEY ARE NOT INTENDED OR REPRESENTED TO BE SUITABLE FOR REUSE BY OWNER OR OTHERS ON EXTENSIONS OF THE PROJECT OR ON ANY OTHER PROJECT. ANY REUSE WITHOUT FURTHER VERIFICATION OR ADAPTATION BY REMINGTON & VERNICK ENGINEERS AND AFFILIATES FOR THE SPECIFIC PURPOSE INTENDED WILL BE AT OWNERS SOLE RISK AND WITHOUT LIABILITY OR LEGAL EXPOSURE TO REMINGTON & VERNICK ENGINEERS AND AFFILIATES. OWNER & VERNICK ENGINEERS AND AFFILIATES, AND OWNER & VERNICK ENGINEERS AND AFFILIATES FROM ALL CLAIMS, DAMAGES, LOSSES AND EXPENSES ARISING OUT OF OR RESULTING THEREFROM.

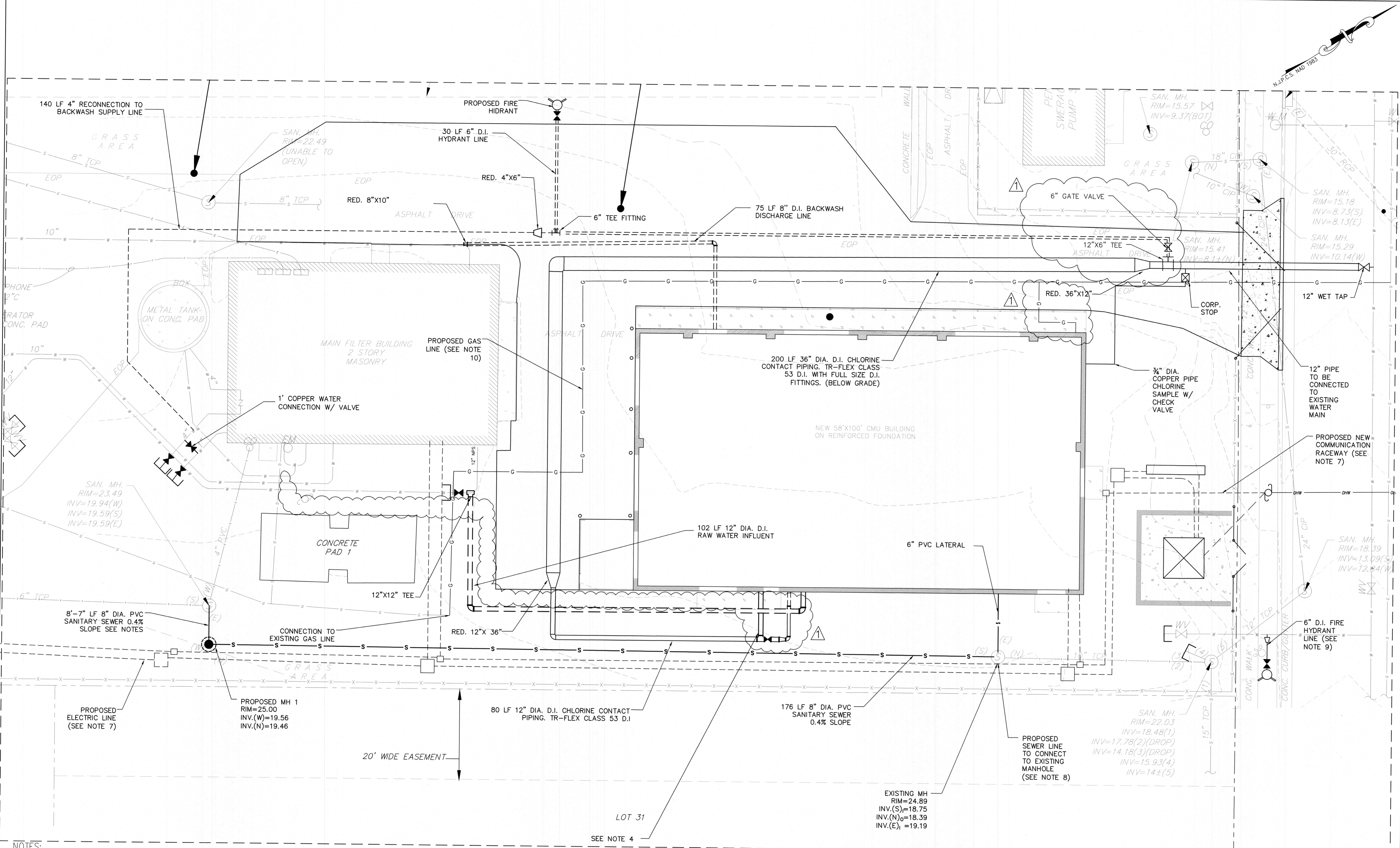
NO.	REVISION	DATE	BY	CHK
1	DESIGN CHANGE PER ADDENDUM 2 ORA	4/9/25	FM	JM

NO.	REVISION	DATE	BY	CHK
1	DESIGN CHANGE PER ADDENDUM 2 ORA	4/9/25	FM	JM

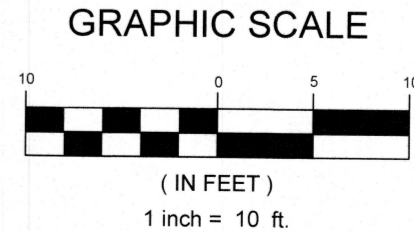
PROPOSED UTILITY PLAN

MERCHANTVILLE PENNSAUKEN WATER COMMISSION
BROWNING ROAD
WATER TREATMENT PLANT IMPROVEMENTS
PENNSAUKEN TOWNSHIP
CAMDEN COUNTY
NEW JERSEY

DRAWN BY:	DESIGN BY:	CHECKED BY:	SCALE:
FM	FM	JM	AS NOTED
DATE:	3/24	SHEET No.:	C-6
JOB No.:	0424M081		



- NOTES:**
1. PROVIDE WATERTIGHT GASKET FOR NEW CONNECTION AND MODIFY EXISTING CHANNEL, SEE DETAIL ON SHEET D-1
 2. THE CONTRACTOR SHALL SUPPLY AND INSTALL ALL FITTING TO GO FROM THE 12" DIAMETER TO THE 36" DIAMETER CHLORINE CONTACT PIPE.
 3. CONTRACTOR SHALL MAINTAIN THE MINIMUM COVER TO PROVIDE THE REQUIRED SEPARATION BETWEEN THE SANITARY AND THE WATER LINE.
 4. CONTRACTOR TO VERIFY LOCATION OF OF EXISTING UTILITY AND TAKE ALL NECESSARY PRECAUTIONS NOT TO DAMAGE AND AVOID CONFLICT.
 5. ENLARGEMENT OF BOXED AREA ON SHEET C-5 IS SHOWN ON THIS SHEET
 6. CONTRACTOR TO INSTALL THE PROPOSED SEWER LINE AND MANHOLE AFTER THE EXISTING 14" WATER MAIN IS DISCONNECTED AND ABANDONED IN PLACE (SEE PROPOSED DEMOLITION SITE PLAN C-2).
 7. CONTRACTOR TO BE AWARE OF THE SPACING AND TAKE ALL THE NECESSARY PRECAUTIONS NOT TO THE DAMAGE THE PROPOSED DUCT BANK PLACED CLOSE TO THE FENCE LINE (SEE PP-2, PP-3 AND ELECTRICAL PLANS).
 8. CONNECTION TO BE CORE DRILLED WITH WATER TIGHT GASKET.
 9. FIRE HYDRANT LINE COMPLETE OF WET TAP, 14"x6" REDUCER FITTING, 6" VALVE AND HYDRANT.
 10. CONTRACTOR SHALL COORDINATE WITH THE LOCAL UTILITY FOR THE RELOCATION OF THE EXISTING UNDERGROUND GAS LINE. ONLY THE SECTION OF THE EXISTING GAS LINE SHOWN ON THE PROPOSED DEMOLITION PLAN (C-2) PLAN SHALL BE RELOCATED. THE NEW PROPOSED GAS LINE SHALL CONNECT TO THE EXISTING GAS SERVICE, AS SHOWN ON THIS PLAN.





REMINGTON & VERNICK ENGINEERS
 2059 SPRINGDALE ROAD
 CHERRY HILL, NJ 08003
 (856) 795-9595, FAX (856) 795-1882
 WEB ADDRESS : RVE.COM
 Certification of Authorization: 24 GA 28003300
Excellence • Innovation • Service

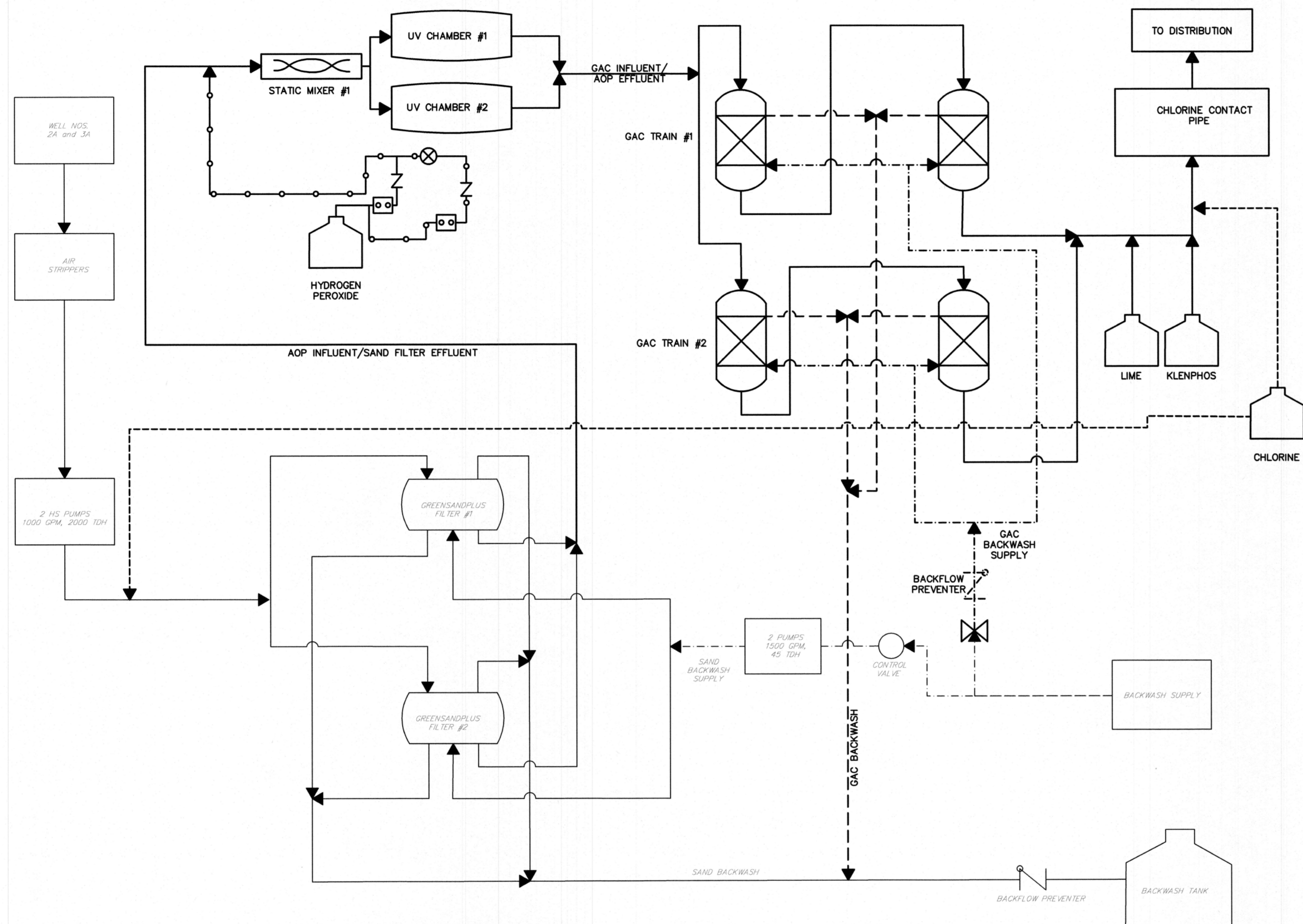
Dennis K. Yoder
 DATE: 9/14/24
DENNIS K. YODER
 NJ PROFESSIONAL ENGINEER LIC. No. 31886

DATE:
STEPHANIE A. CUTHBERT
 NJ PROFESSIONAL ENGINEER LIC. No. 42136

PLANS WHICH DO NOT BEAR AN EMBOSSED SEAL ARE NOT VALID.

ALL DOCUMENTS PREPARED BY REMINGTON & VERNICK ENGINEERS AND AFFILIATES ARE INSTRUMENTS OF SERVICE IN RESPECT OF THE PROJECT. THEY ARE NOT INTENDED OR REPRESENTED TO BE SUITABLE FOR REUSE BY OWNER OR OTHERS ON EXTENSIONS OF THE PROJECT OR ON ANY OTHER PROJECT. ANY REUSE WITHOUT WRITTEN VERIFICATION OR NOTATION BY REMINGTON & VERNICK ENGINEERS AND AFFILIATES FOR THE SPECIFIC PURPOSE INTENDED WILL BE AT OWNERS SOLE RISK AND WITHOUT LIABILITY OR LEGAL EXPOSURE TO REMINGTON & VERNICK ENGINEERS AND AFFILIATES. AND OWNER SHALL INDEMNIFY AND HOLD HARMLESS REMINGTON & VERNICK ENGINEERS AND AFFILIATES FROM ALL CLAIMS, DAMAGES, LOSSES AND EXPENSES ARISING OUT OF OR RESULTING THEREFROM.

NO.	REVISION	DATE	BY
1	DESIGN CHANGE PER ADDENDUM 2, Q&A	4/9/25	JM



PROCESS PIPING SCHEMATIC DIAGRAM
 N.T.S.

NOTES:

1. ALL GATE VALVES IN PIPE GALLERY TO BE NON-RISING STEM.
2. PH AND CHLORINE ANALYZER TO BE INSTALLED COMPLETE WITH pH SENSOR AND PIPING FOR CONTINUOUS FLOW MONITORING. PROVIDE A SINK WITH FAUCET. PROVIDE ADEQUATE POWER OUTLETS FOR EQUIPMENT.
3. ALL VALVES ON THE GAC UNIT TO BE PRATT MODEL MKII OR APPROVED EQUAL WITH EIM HQ (EMERSON) SERIES MOTORIZED ACTUATORS WITH MECHANICAL DIAL POSITION INDICATORS. REFER TO THE SPECIFICATIONS FOR MORE DETAILS.
4. LIME FEED FLUSH LINE: PROVIDE A 1/2 INCH SCH. 80 PVC LIME FEED FLUSH LINE ON THE LIME SLURRY FEED LINE. THE FLUSH LINE SHALL BE INSTALLED ON THE SUCTION SIDE OF THE LIME SLURRY FEED PUMP. SEE DRAWING P-3.1 FOR MORE DETAILS.



DELETED

PROCESS PIPING SCHEMATIC DIAGRAM
 MERCHANTVILLE PENNSAUKEN WATER COMMISSION
 BROWNING ROAD
 WATER TREATMENT PLANT IMPROVEMENTS
 PENNSAUKEN TOWNSHIP CAMDEN COUNTY NEW JERSEY

DRAWN BY	DESIGN BY	CHECKED BY	SCALE
FM	FM	JM	AS NOTED
DATE:	3/24		
JOB No.:	0424M081		
		SHEET No.:	PP-1



REMINGTON & VERNICK ENGINEERS
 2059 SPRINGDALE ROAD
 CHERRY HILL, NJ 08003
 (856) 795-9595, FAX (856) 795-1882
 WEB ADDRESS: RVE.COM
 Certification of Authorization: 24 GA 28003300
 Excellence • Innovation • Service

Dennis K. Yoder
 DATE: 9/14/24

DENNIS K. YODER
 NJ PROFESSIONAL ENGINEER LIC. No. 31866

DATE:
STEPHANIE A. CUTHBERT
 NJ PROFESSIONAL ENGINEER LIC. No. 42138

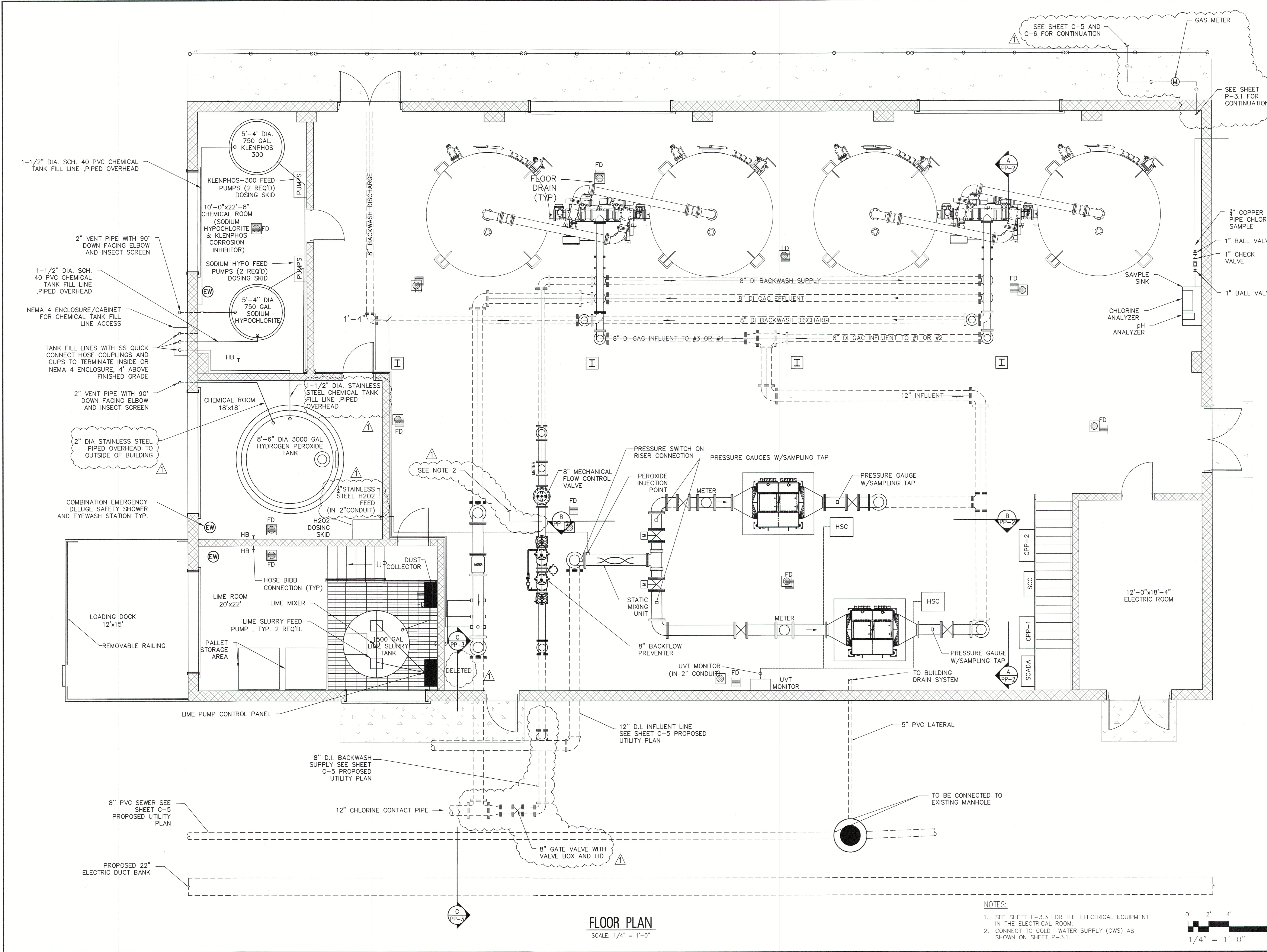
PLANS WHICH DO NOT BEAR AN EMBOSSED SEAL ARE NOT VALID.

ALL DOCUMENTS PREPARED BY REMINGTON & VERNICK ENGINEERS AND AFFILIATES ARE INSTRUMENTS OF SERVICE IN RESPECT OF THE PROJECT. THEY ARE NOT INTENDED OR REPRESENTED TO BE SUITABLE FOR REUSE BY OWNER OR OTHERS ON EXTENSIONS OF THE PROJECT OR ON ANY OTHER PROJECT. ANY REUSE WITHOUT WRITTEN VERIFICATION OR ADAPTATION BY REMINGTON & VERNICK ENGINEERS AND AFFILIATES FOR THE SPECIFIC PURPOSE INTENDED WILL BE AT OWNERS SOLE RISK AND WITHOUT LIABILITY OR LEGAL EXPOSURE TO REMINGTON & VERNICK ENGINEERS AND AFFILIATES. OWNER SHALL INDEMNIFY AND HOLD HARMLESS REMINGTON & VERNICK ENGINEERS AND AFFILIATES FROM ALL CLAIMS, DAMAGES, LOSSES AND EXPENSES ARISING OUT OF OR RESULTING THEREFROM.

NO.	REVISION	DATE	BY	CHKD.
1	DESIGN CHANGE PER ADDENDUM 2, Q&A	4/9/25	JM	JM

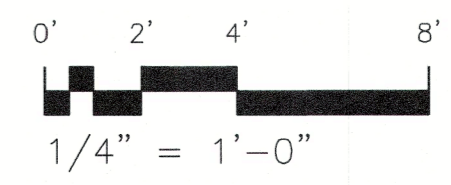
PROCESS PIPING FLOOR PLAN
 MERCHANTVILLE PENNSAUKEN WATER COMMISSION
 BROWNING ROAD
 WATER TREATMENT PLANT IMPROVEMENTS
 PENNSAUKEN TOWNSHIP CAMDEN COUNTY NEW JERSEY

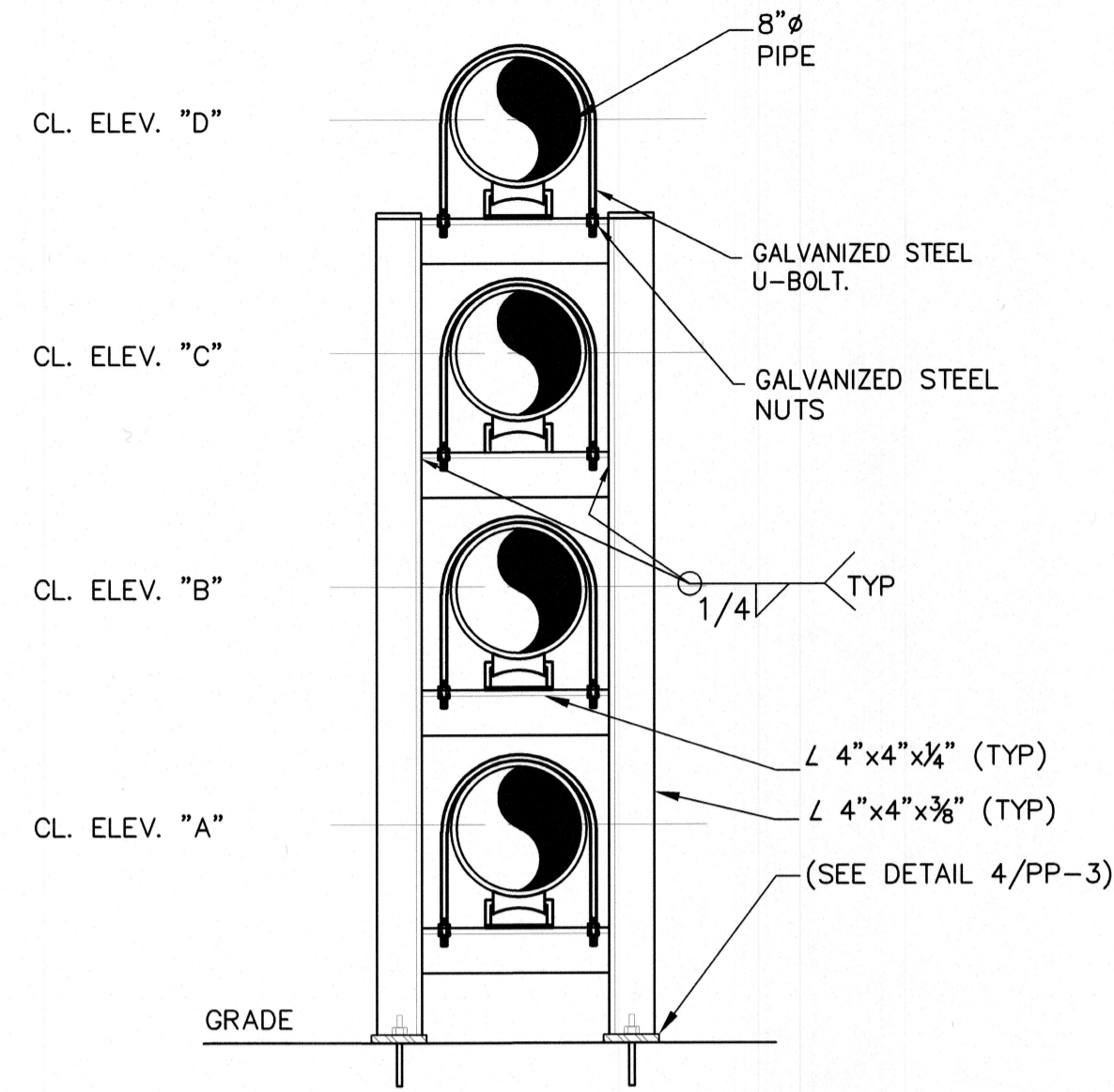
DRAWN BY:	DESIGN BY:	CHECKED BY:	SCALE:
FM	FM	JM	AS NOTED
DATE:	3/24	SHEET NO.:	PP-2
JOB NO.:	0424M081		



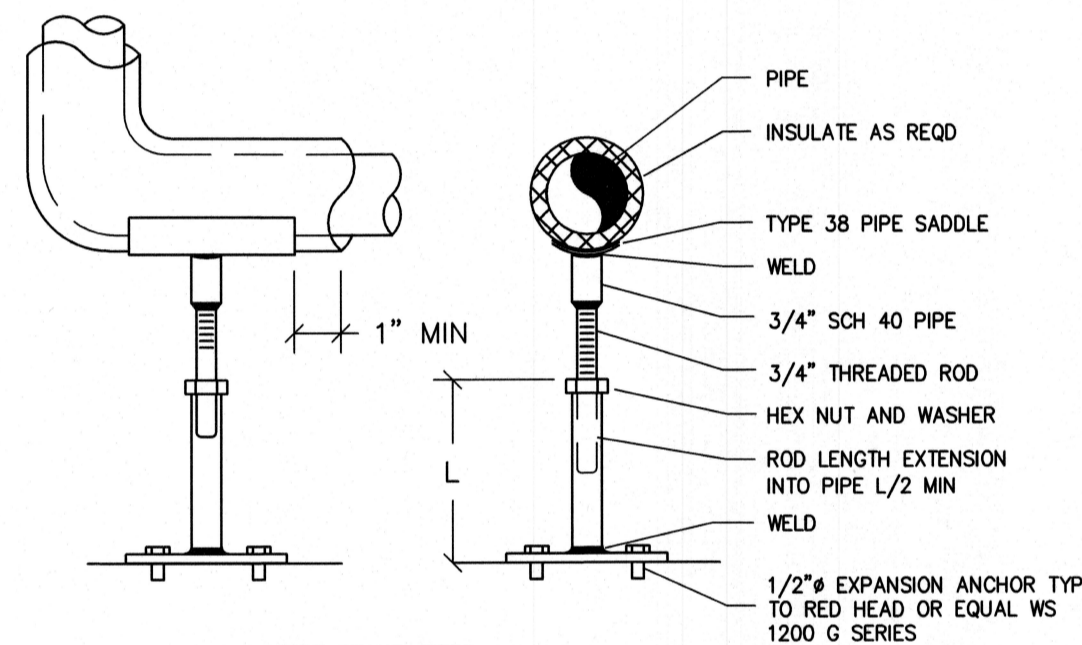
FLOOR PLAN
 SCALE: 1/4" = 1'-0"

- NOTES:**
- SEE SHEET E-3.3 FOR THE ELECTRICAL EQUIPMENT IN THE ELECTRICAL ROOM.
 - CONNECT TO COLD WATER SUPPLY (CWS) AS SHOWN ON SHEET P-3.1.





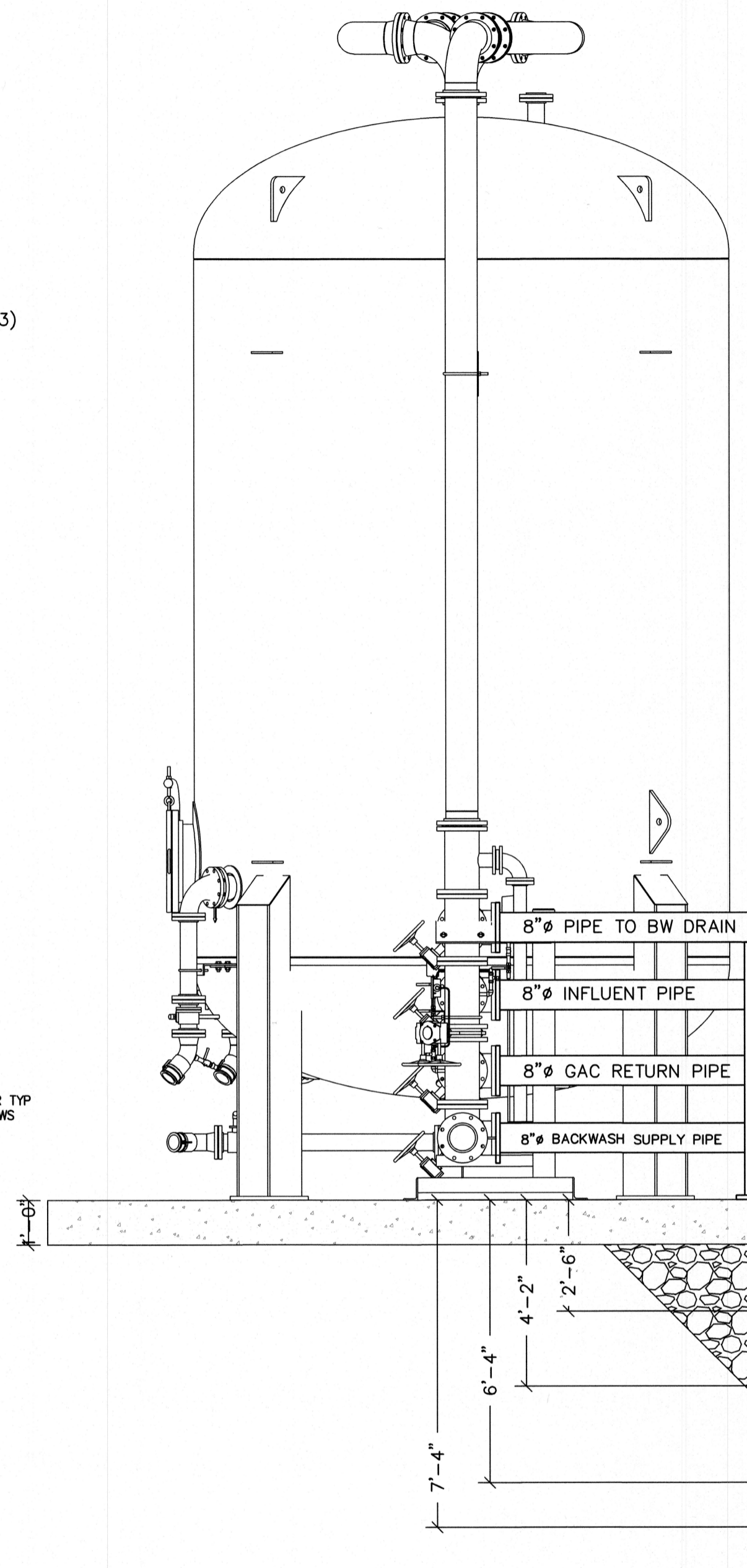
PIPE SUPPORT DETAIL
SCALE: 3/8"=1" PP-2



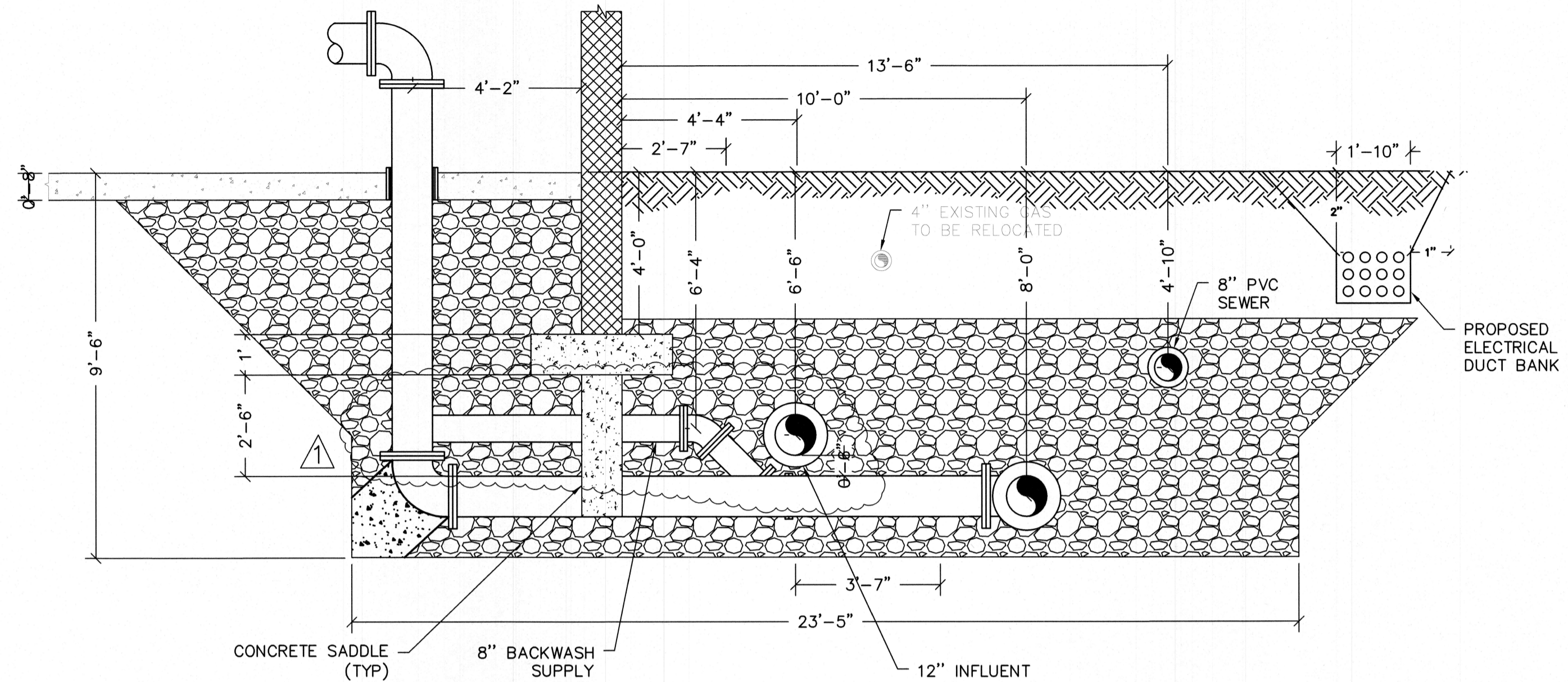
PIPE STAND SIZES			
PIPE SIZE	PIPE STAND SIZE (SCH 40)	THREADED ROD SIZE	PIPE SIZE WELDED TO PLATE (SCH 40)
8" AND SMALLER	1"	3/4"	6" x 6" x 3/8"
10" to 16"	1-1/4"	1"	10" x 10" x 1/2"

- NOTES:
1 FOR PIPES W/CL ELEVATIONS 24" MAX AFF
2 GALV SUPPORTS WHEN USED OUTDOORS SANDBLAST AND SHOP PRIME ALL OTHERS

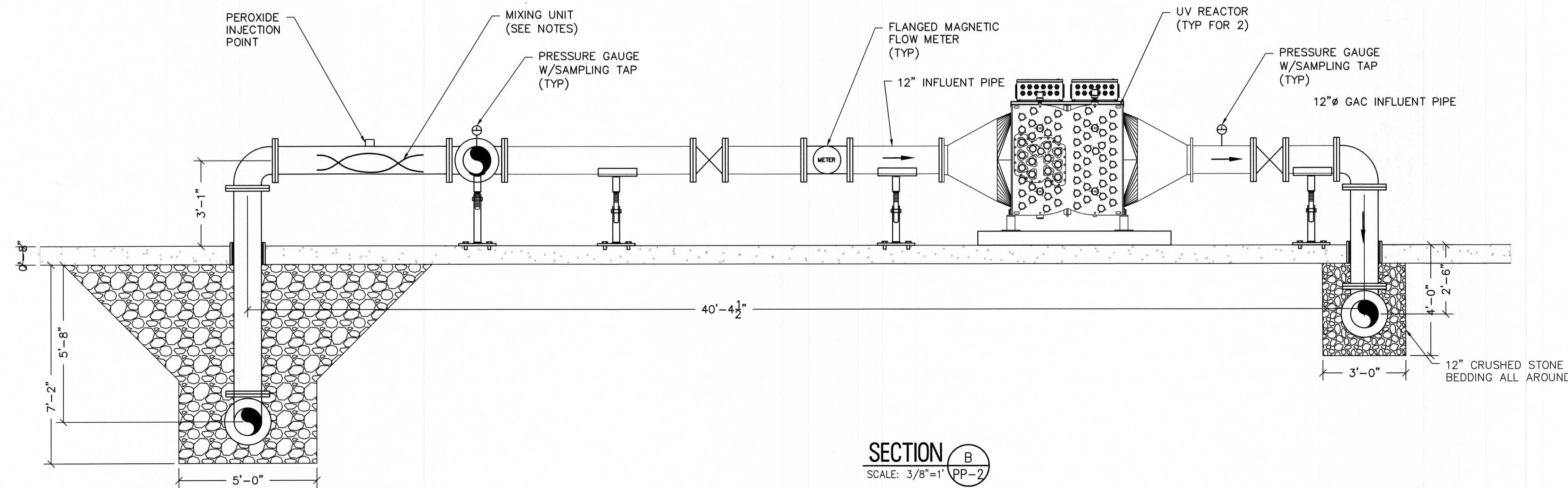
PIPE SADDLE WITH ADJUSTABLE STANCHION
N.T.S. PP-2



SECTION A
SCALE: 3/8"=1" PP-2



SECTION C
SCALE: 3/8"=1" PP-3



SECTION B
SCALE: 3/8"=1" PP-2

NOTES:

- SEE SHEET D-1 AND D-2 FOR DETAILS
- SEE SHEETS C-5, C-6 AND ELECTRICAL PLANS FOR ADDITIONAL DETAILS ON THE PROPOSED ELECTRICAL DUCT BANK. THE CONTRACTOR SHALL BE AWARE OF THE SPACING AND LOCATION OF ALL THE PROPOSED AND EXISTING PIPING AND UTILITIES.
- ALL PIPING TO BE DUCTILE IRON UNLESS OTHERWISE SPECIFIED
- CONTRACTOR SHALL INSTALL THE PIPES IN THE BUILDING AND ACROSS THE FOUNDATION AT MINIMUM DEPTHS INDICATED IN THE PLANS AND IN THE GEOTECHNICAL REPORT ATTACHED IN THE APPENDICES.
- THE STATIC MIXING UNIT SHALL BE IN STAINLESS STEEL.



REMINGTON & VERNICK ENGINEERS
2059 SPRINGDALE ROAD
CHERRY HILL, NJ 08003
(856) 795-9595, FAX (856) 795-1882
WEB ADDRESS: RVE.COM
Certification of Authorization: 24 GA 28003300
Excellence • Innovation • Service

DATE: 9/14/24
DENNIS K. YODER
NJ PROFESSIONAL ENGINEER LIC. No. 31866

DATE:
STEPHANIE A. CUTHBERT
NJ PROFESSIONAL ENGINEER LIC. No. 42136

PLANS WHICH DO NOT BEAR AN EMBOSSED SEAL ARE NOT VALID

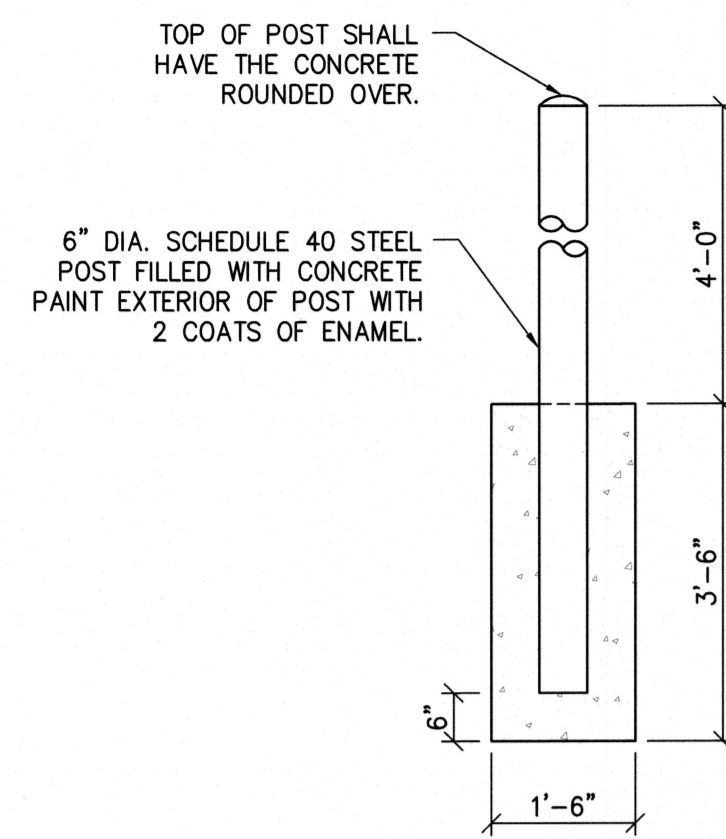
ALL DOCUMENTS PREPARED BY REMINGTON & VERNICK ENGINEERS AND AFFILIATES ARE INSTRUMENTS OF SERVICE IN RESPECT OF THE PROJECT. THEY ARE NOT INTENDED OR REPRESENTED TO BE SUITABLE FOR REUSE BY OWNER OR OTHERS ON EXTENSIONS OF THE PROJECT OR ON ANY OTHER PROJECT. ANY REUSE WITHOUT WRITTEN VERIFICATION OR ADAPTATION BY REMINGTON & VERNICK ENGINEERS AND AFFILIATES FOR THE SPECIFIC PURPOSE INTENDED WILL BE AT OWNERS SOLE RISK AND WITHOUT LIABILITY OR LEGAL EXPOSURE TO REMINGTON & VERNICK ENGINEERS AND AFFILIATES. OWNER SHALL INDEMNIFY AND HOLD HARMLESS REMINGTON & VERNICK ENGINEERS AND AFFILIATES FROM ALL CLAIMS, DAMAGES, LOSSES AND EXPENSES ARISING OUT OF OR RESULTING THEREFROM.

NO.	REVISION	DATE	BY	CHK
1	DESIGN CHANGE PER ADDENDUM 2 ORA	4/9/25	FM	JM

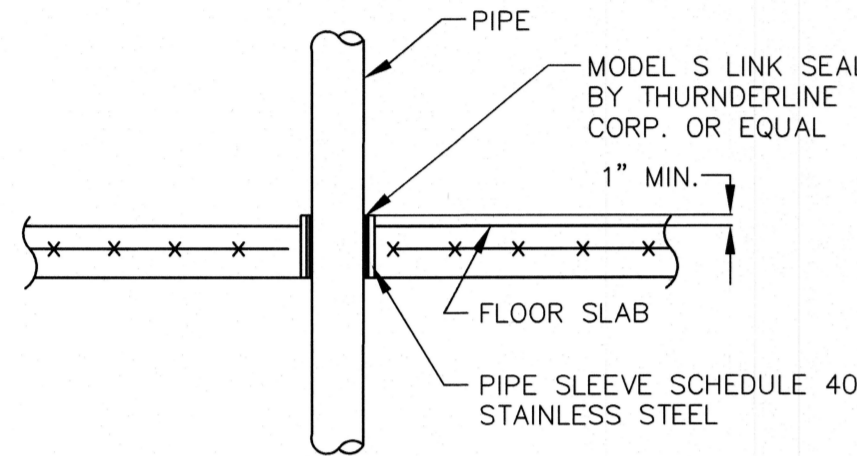
PROCESS PIPING SECTIONS

MERCHANTVILLE PENNSAUKEN WATER COMMISSION
BROWNING ROAD
WATER TREATMENT PLANT IMPROVEMENTS
PENNSAUKEN TOWNSHIP CAMDEN COUNTY NEW JERSEY

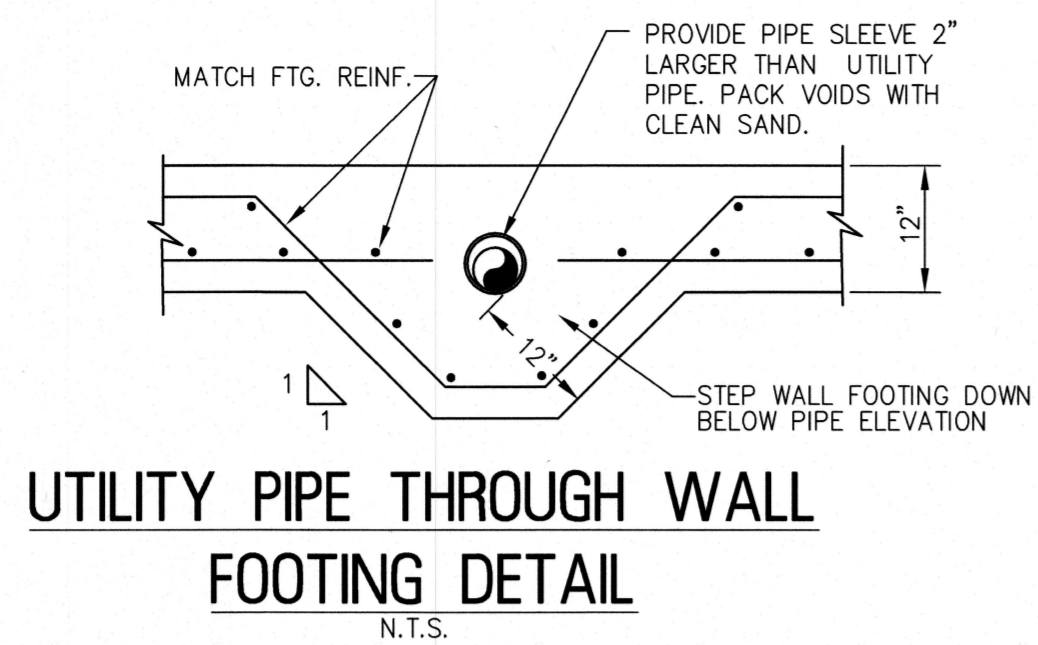
DRAWN BY:	DESIGN BY:	CHECKED BY:	SCALE:
FM	FM	JM	AS NOTED
DATE:	3/24		
JOB No.:	0424M081		
			PP-3



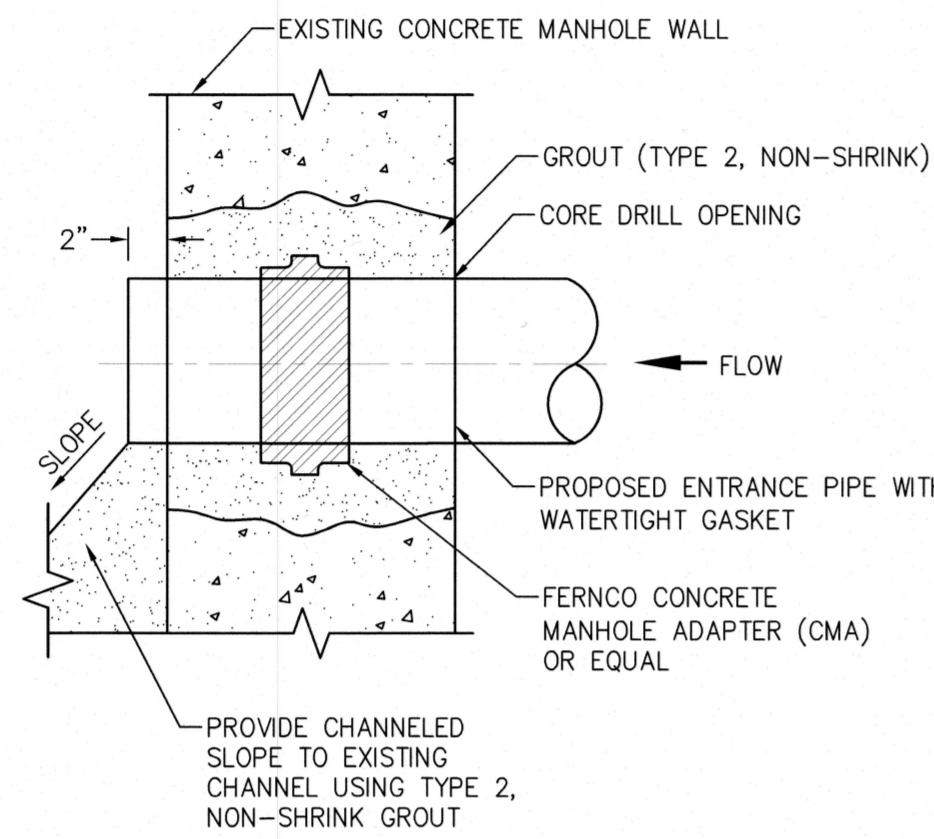
BOLLARD DETAIL
SCALE: 1/2"=1"



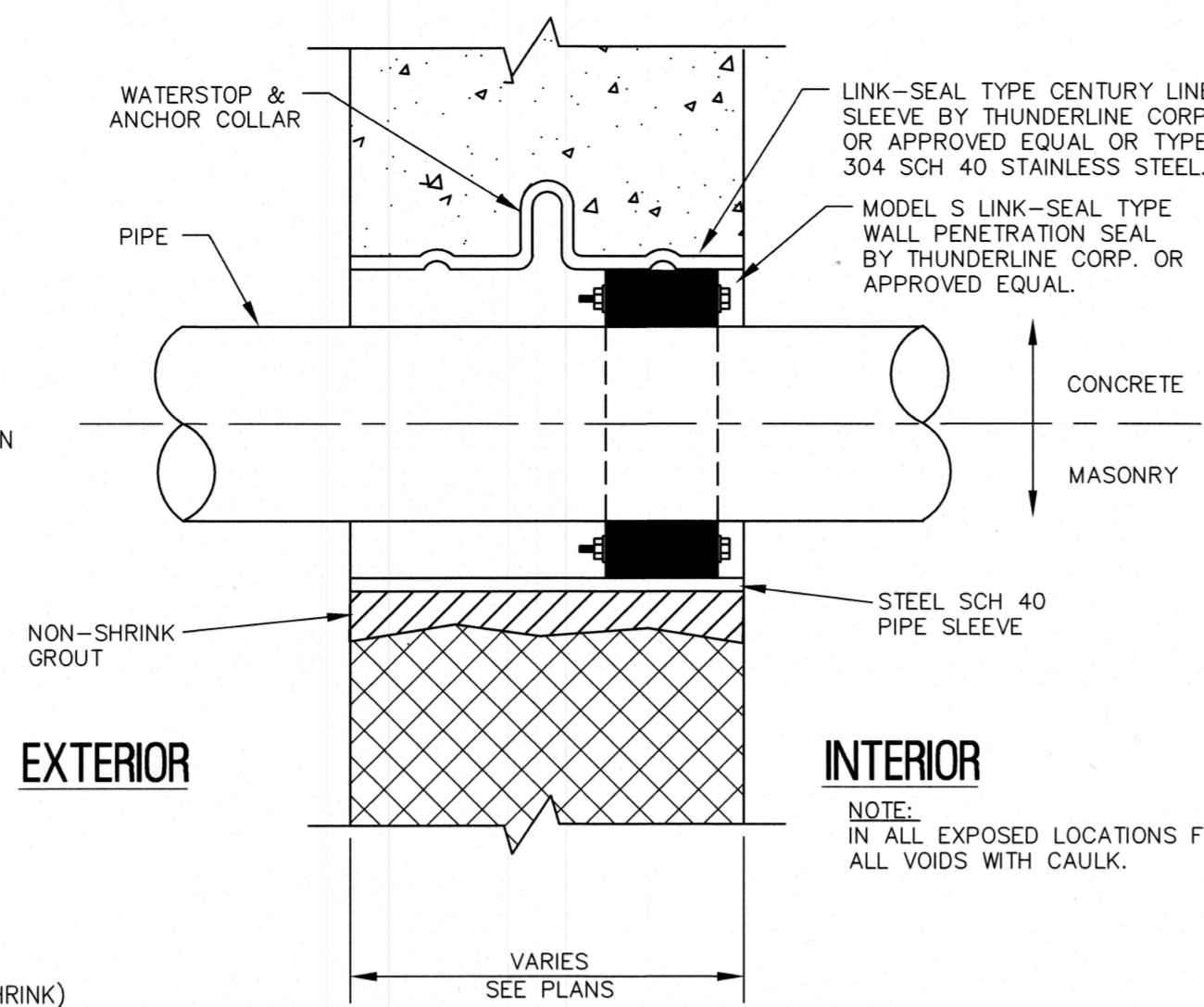
PIPE PENETRATION THROUGH FLOOR SLAB DETAIL
N.T.S.



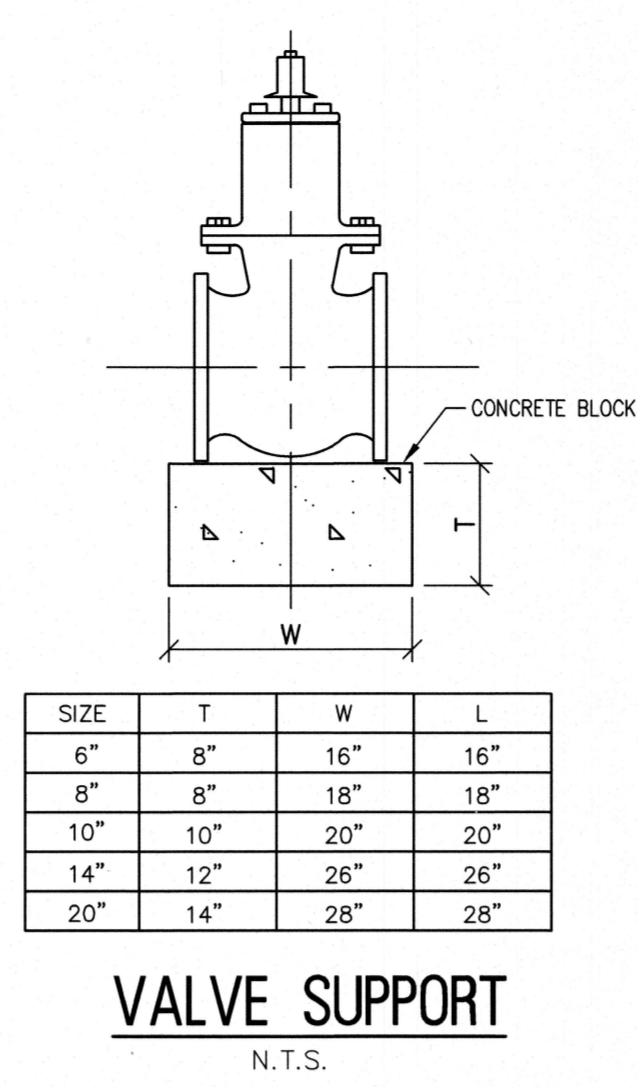
UTILITY PIPE THROUGH WALL FOOTING DETAIL
N.T.S.



CONNECTION TO EXISTING MANHOLE DETAIL
N.T.S.



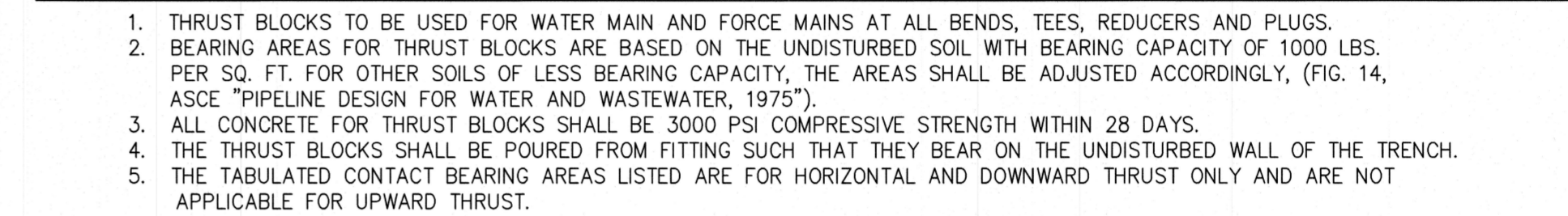
PIPE WALL PENETRATION DETAIL
N.T.S.



SIZE	T	W	L
6"	8"	16"	16"
8"	8"	18"	18"
10"	10"	20"	20"
14"	12"	26"	26"
20"	14"	28"	28"

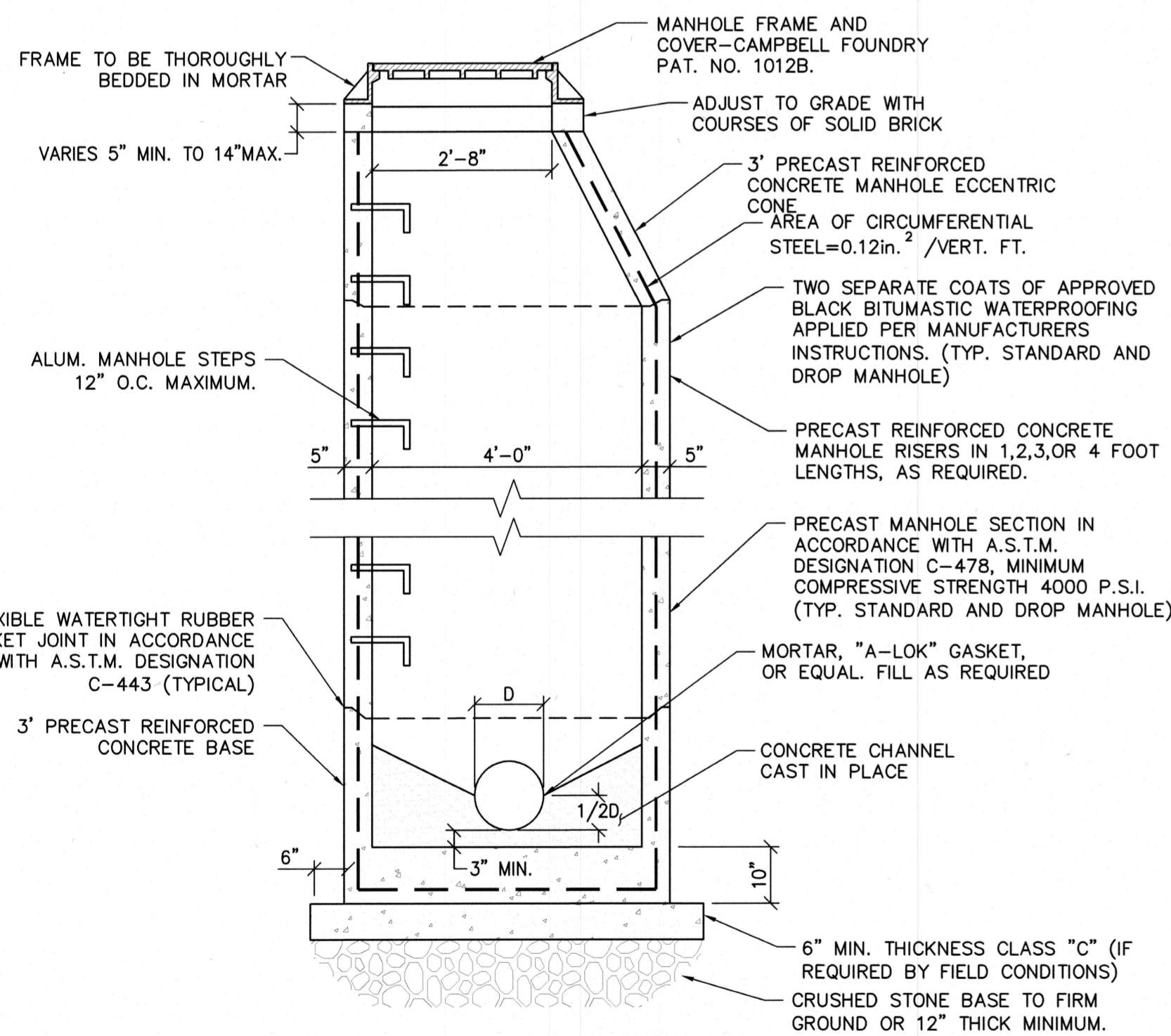
VALVE SUPPORT
N.T.S.

d	MINIMUM SIZE OF CONCRETE THRUST BLOCKS			MINIMUM SIZE OF CONCRETE THRUST BLOCKS			MINIMUM SIZE OF CONCRETE THRUST BLOCKS			MINIMUM SIZE OF CONCRETE THRUST BLOCKS		
	A	B	C	A	B	C	A	B	C	A	B	C
6"	2'-0"	8"	1'-3"	2'-6"	8"	1'-3"	1'-6"	8"	1'-3"	1'-6"	8"	1'-3"
8"	2'-6"	8"	1'-6"	3'-0"	8"	1'-6"	1'-6"	8"	1'-9"	1'-6"	8"	1'-9"
10"	3'-0"	10"	2'-0"	3'-6"	10"	2'-0"	2'-3"	10"	2'-0"	1'-6"	10"	2'-0"
12"	3'-6"	10"	2'-6"	3'-9"	10"	2'-9"	2'-6"	10"	2'-6"	1'-6"	10"	2'-6"



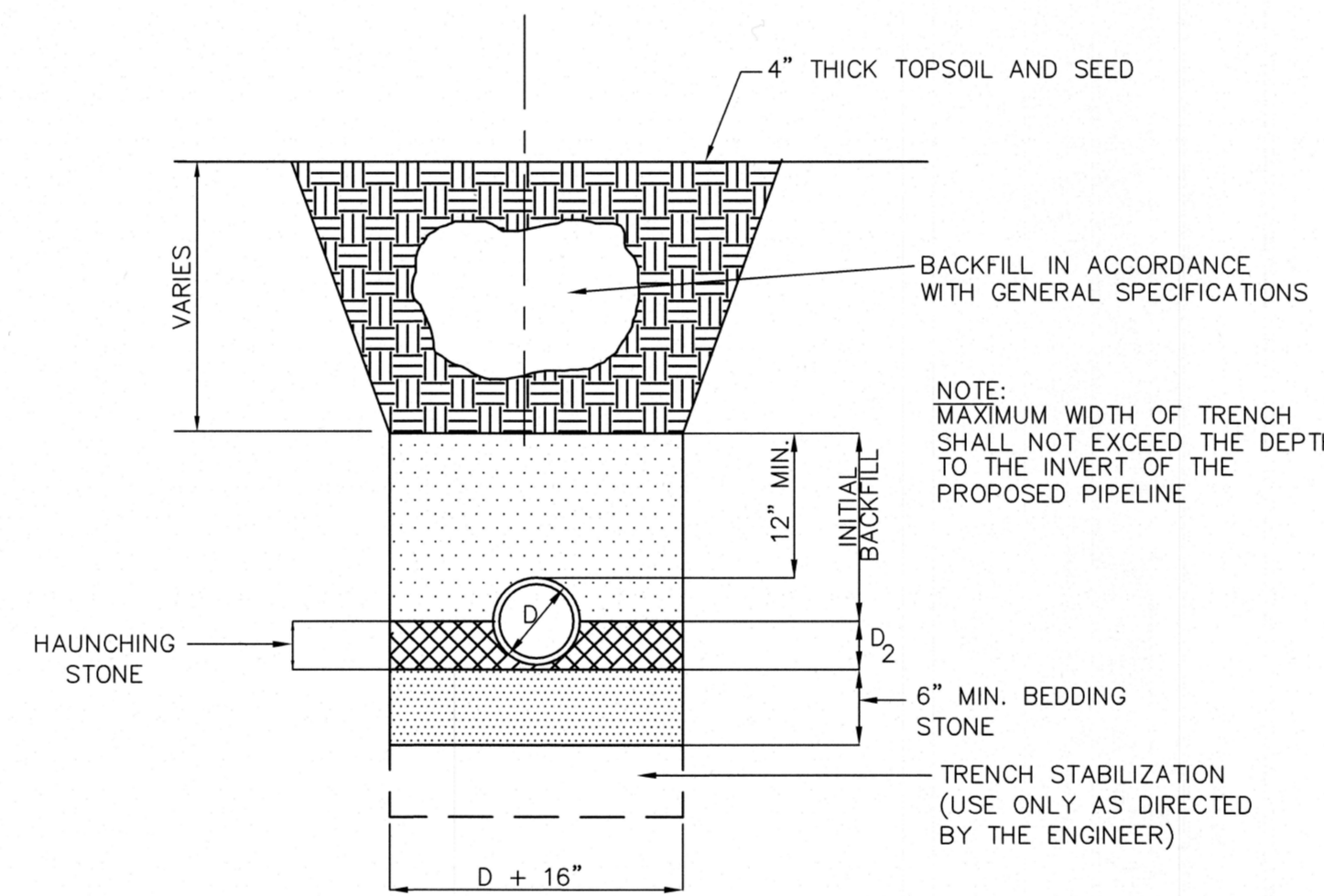
1. THRUST BLOCKS TO BE USED FOR WATER MAIN AND FORCE MAINS AT ALL BENDS, TEES, REDUCERS AND PLUGS.
2. BEARING AREAS FOR THRUST BLOCKS ARE BASED ON THE UNDISTURBED SOIL WITH BEARING CAPACITY OF 1000 LBS. PER SQ. FT. FOR OTHER SOILS OF LESS BEARING CAPACITY, THE AREAS SHALL BE ADJUSTED ACCORDINGLY, (FIG. 14, ASCE "PIPELINE DESIGN FOR WATER AND WASTEWATER, 1975").
3. ALL CONCRETE FOR THRUST BLOCKS SHALL BE 3000 PSI COMPRESSIVE STRENGTH WITHIN 28 DAYS.
4. THE THRUST BLOCKS SHALL BE POURED FROM FITTING SUCH THAT THEY BEAR ON THE UNDISTURBED WALL OF THE TRENCH.
5. THE TABULATED CONTACT BEARING AREAS LISTED ARE FOR HORIZONTAL AND DOWNWARD THRUST ONLY AND ARE NOT APPLICABLE FOR UPWARD THRUST.

THRUST BLOCK DETAIL FOR SYSTEMS AT 150 PSI TEST PRESSURE OR LESS
N.T.S.

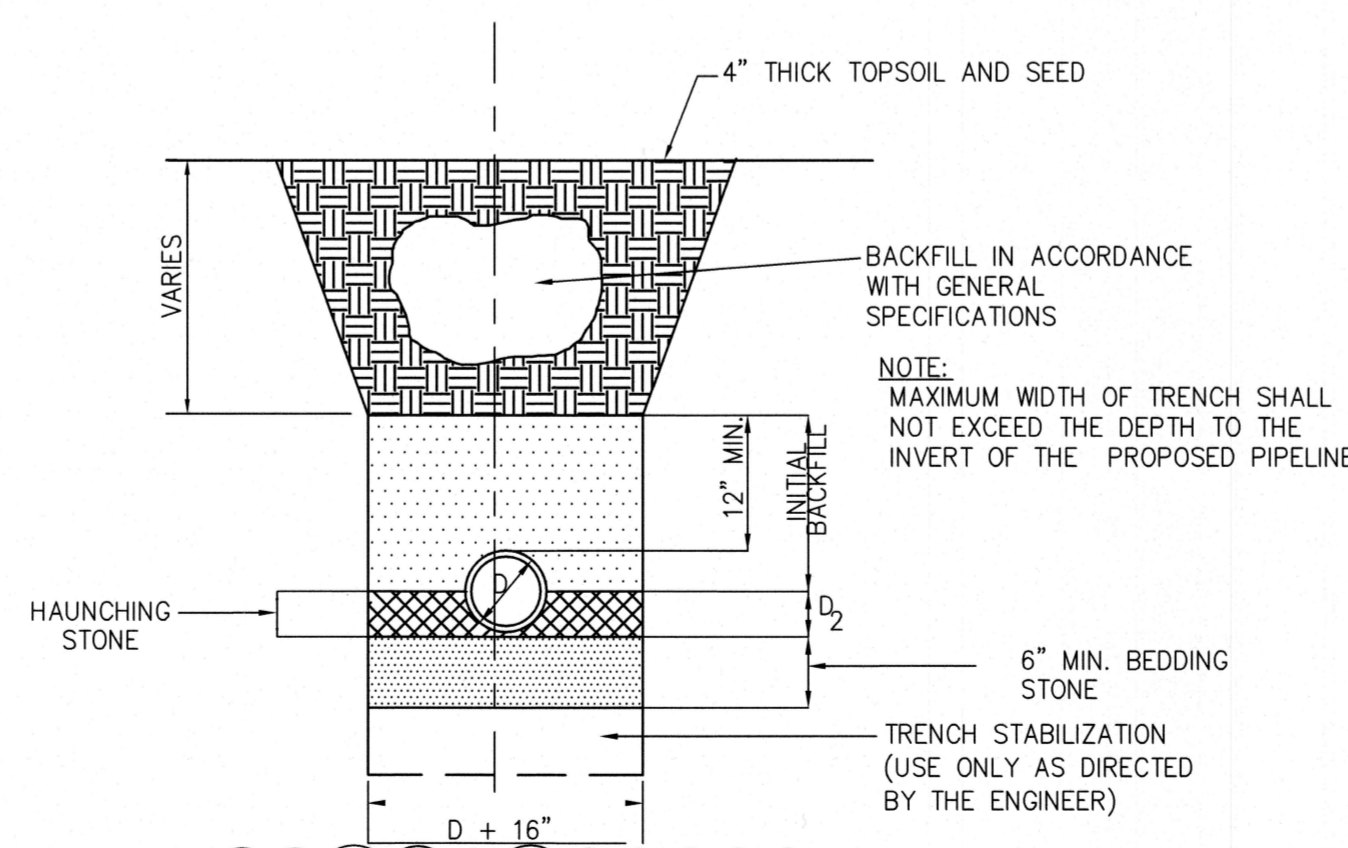


STANDARD 4'-0" DIAMETER PRECAST MANHOLE
(FOR PIPES 36" DIA. OR LESS)
SCALE 1/2"=1"

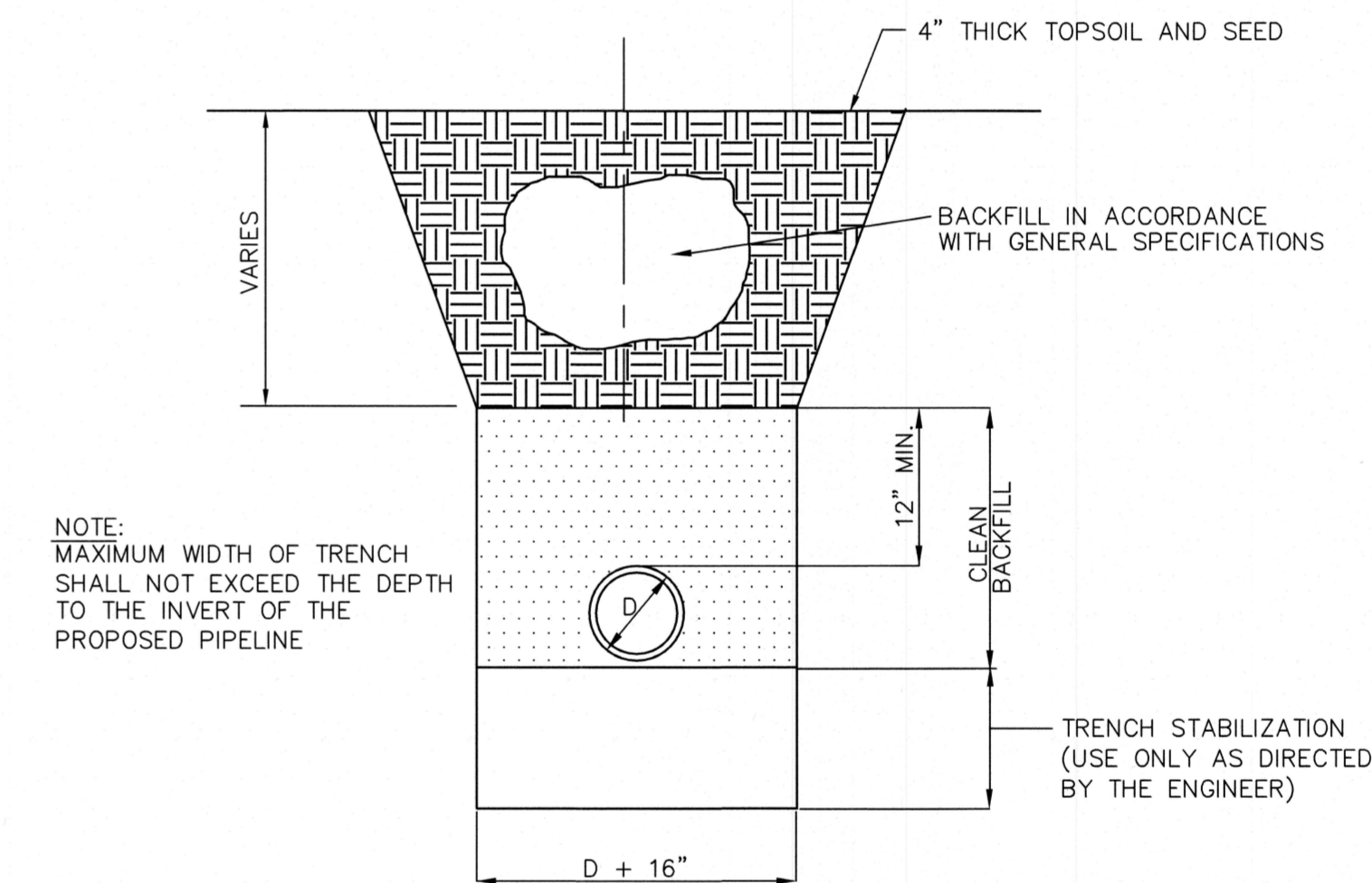
1. ALL MANHOLES SHALL BE CONSTRUCTED WATERTIGHT.
2. THE CONTRACTOR SHALL BE RESPONSIBLE FOR CONSTRUCTING ADEQUATE BALLAST TO OFFSET FLOATATION FORCES ACTING ON MANHOLES INSTALLED IN WET AREAS.



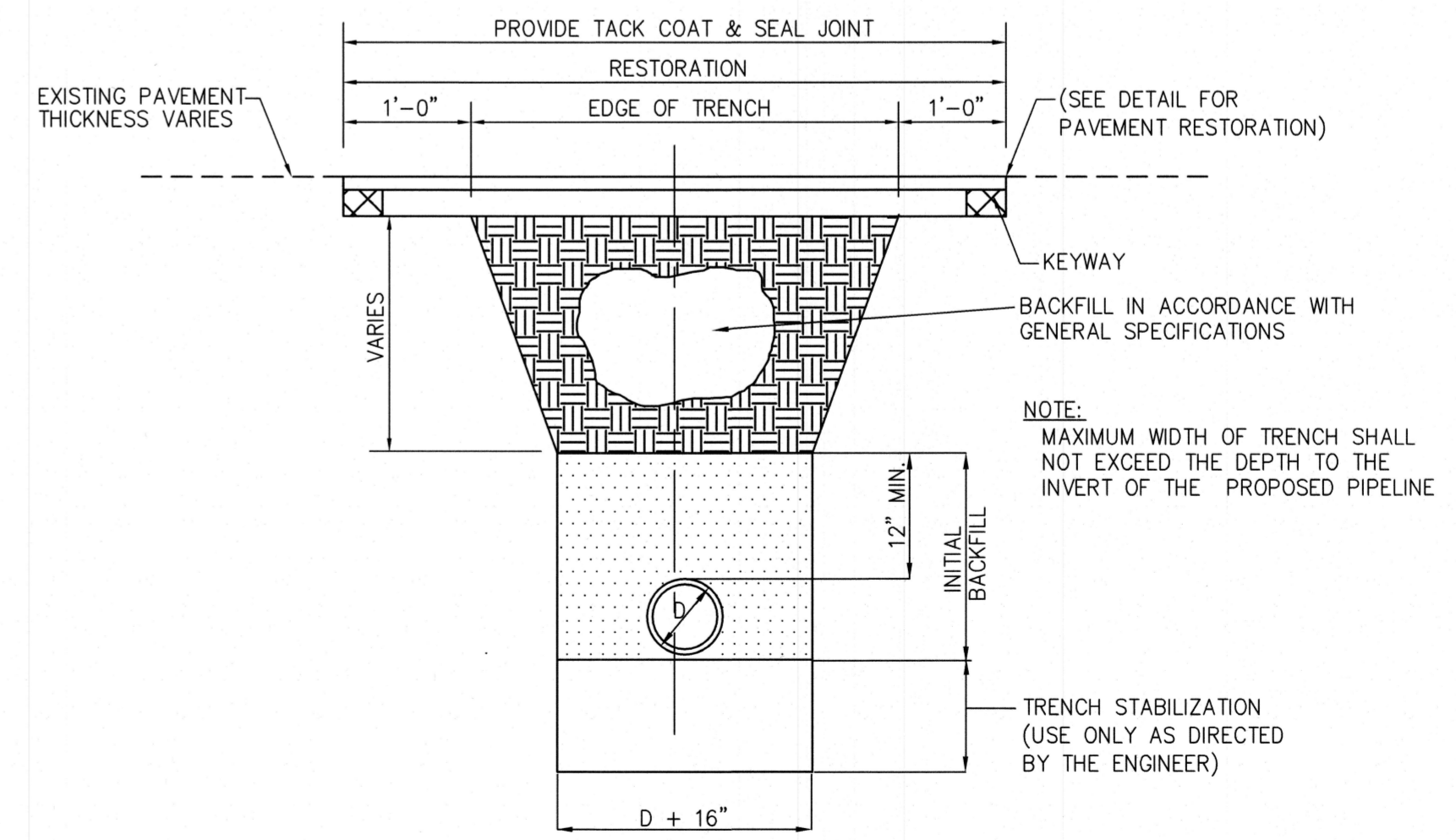
P.V.C. NON-ROADWAY TRENCH
N.T.S.



TRENCH DETAIL FOR P.V.C. PIPE
N.T.S.



D.I.P. NON-ROADWAY TRENCH
N.T.S.



ROADWAY TRENCH DETAIL D.I. PIPE
N.T.S.

RVE
1901
REMINGTON & VERNICK ENGINEERS
2059 SPRINGDALE ROAD
CHERRY HILL, NJ 08003
(856) 795-9595, FAX (856) 795-1882
WEB ADDRESS: RVE.COM
Certification of Authorization: 24 GA 28003300
Excellence • Innovation • Service

Dennis K. Yoder
DATE: 8/14/24
DENNIS K. YODER
NJ PROFESSIONAL ENGINEER LIC. No. 31866

DATE:
STEPHANIE A. CUTHBERT
NJ PROFESSIONAL ENGINEER LIC. No. 42136

PLANS WHICH DO NOT BEAR AN EMBOSSED SEAL ARE NOT VALID

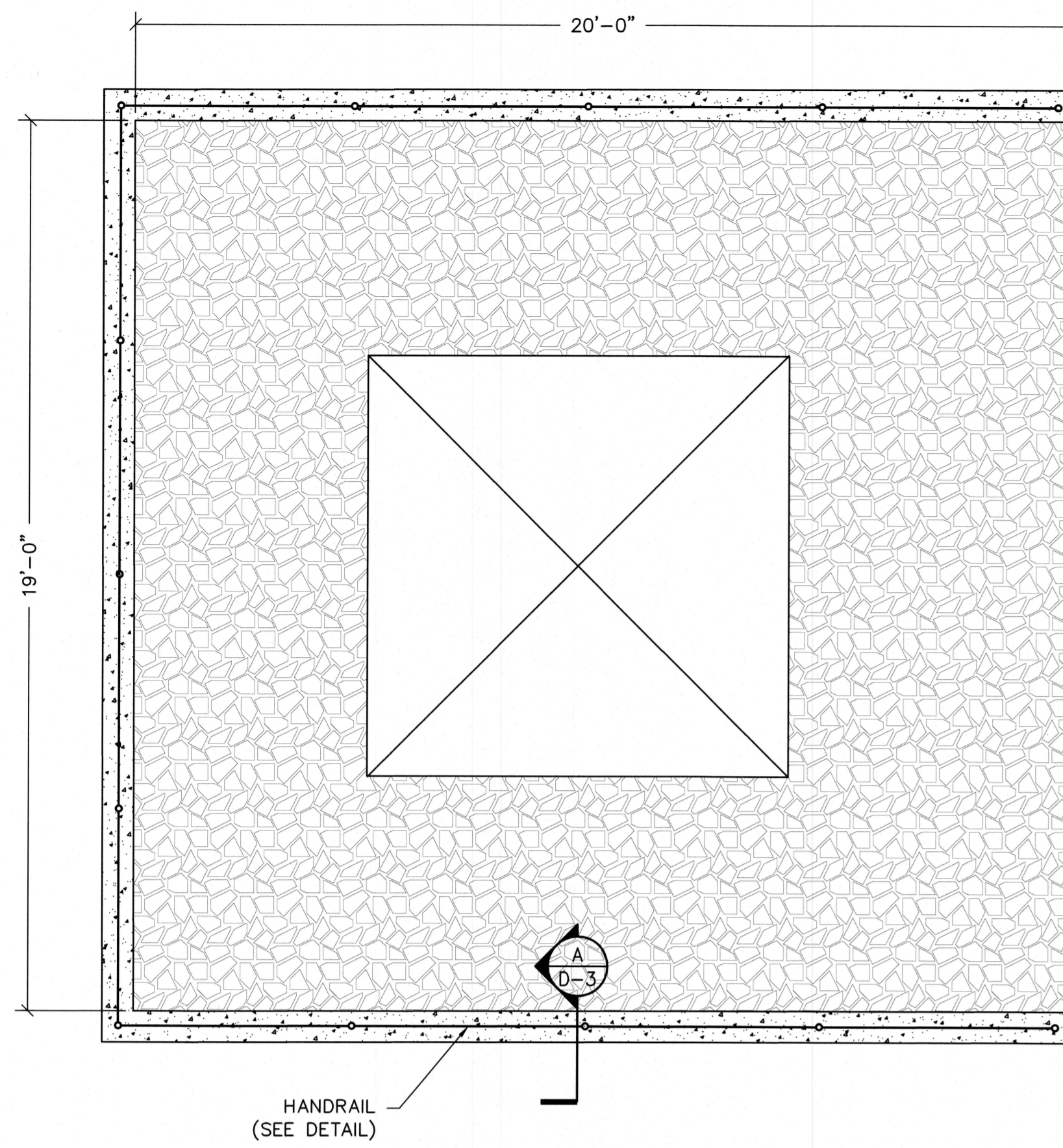
ALL DOCUMENTS PREPARED BY REMINGTON & VERNICK ENGINEERS AND AFFILIATES ARE INSTRUMENTS OF SERVICE IN RESPECT OF THE PROJECT. THEY ARE NOT INTENDED OR REPRESENTED TO BE SUITABLE FOR REUSE BY OWNER OR OTHERS ON EXTENSIONS OF THE PROJECT OR ON ANY OTHER PROJECT. ANY REUSE WITHOUT WRITTEN VERIFICATION OR ADAPTATION BY REMINGTON & VERNICK ENGINEERS AND AFFILIATES FOR THE SPECIFIC PURPOSE INTENDED WILL BE AT OWNERS SOLE RISK AND WITHOUT LIABILITY OR LEGAL EXPOSURE TO REMINGTON & VERNICK ENGINEERS AND AFFILIATES. AND OWNER SHALL INDEMNIFY AND HOLD HARMLESS REMINGTON & VERNICK ENGINEERS AND AFFILIATES FROM ALL CLAIMS, DAMAGES, LOSSES AND EXPENSES ARISING OUT OF OR RESULTING THEREFROM.

NO.	REVISION	DATE	BY
1	DESIGN CHANGE PER ADDENDUM 2	08/14/25	FM/JM

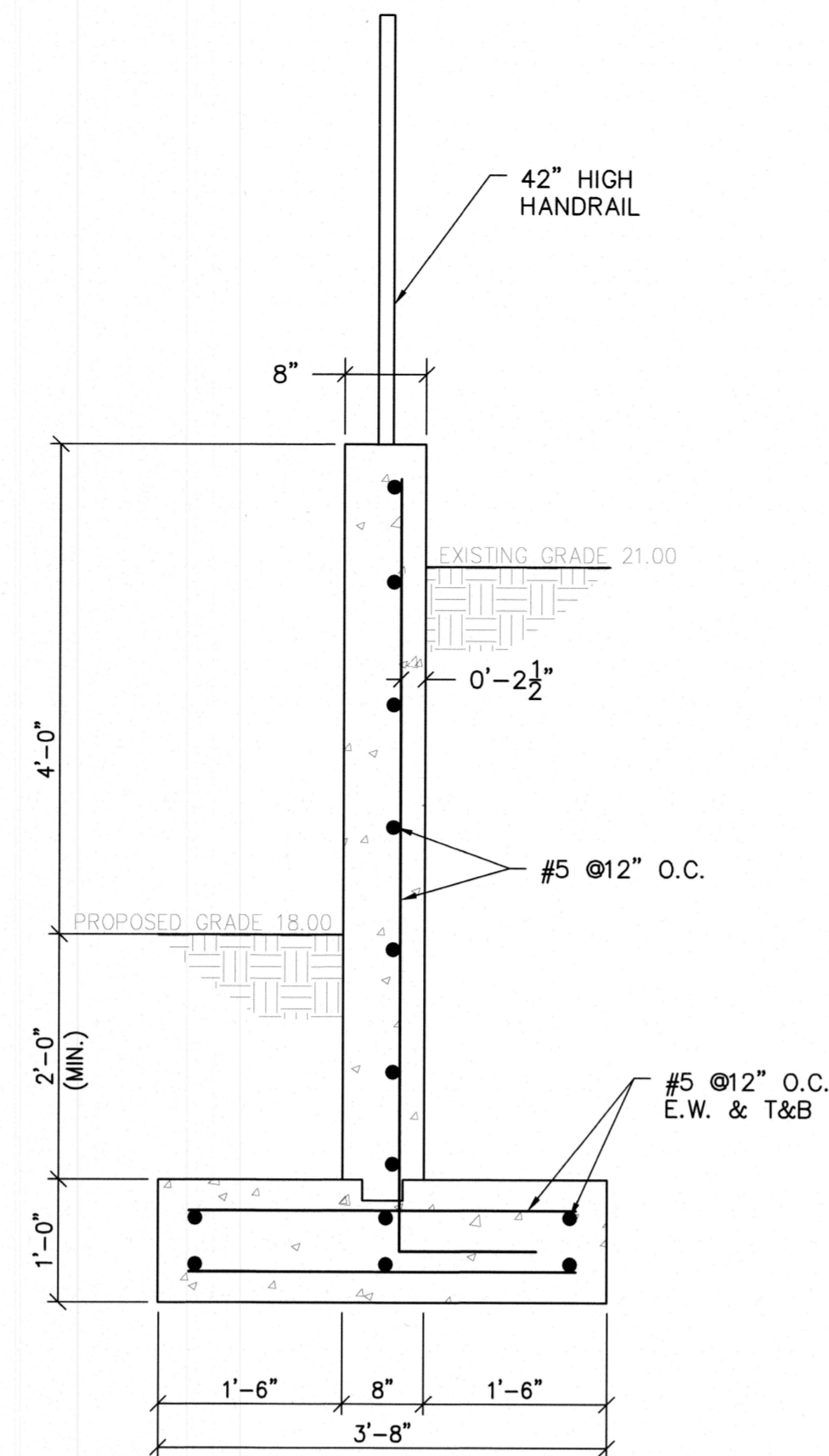
MISCELLANEOUS DETAILS

MERCHANTVILLE PENNSAUKEN WATER COMMISSION
BROWNING ROAD
WATER TREATMENT PLANT IMPROVEMENTS
PENNSAUKEN TOWNSHIP CAMDEN COUNTY NEW JERSEY

DRAWN BY	DESIGN BY	CHECKED BY	SCALE
FM	FM	JM	AS NOTED
DATE	3/24		
JOB No.			D-1
0424M081			

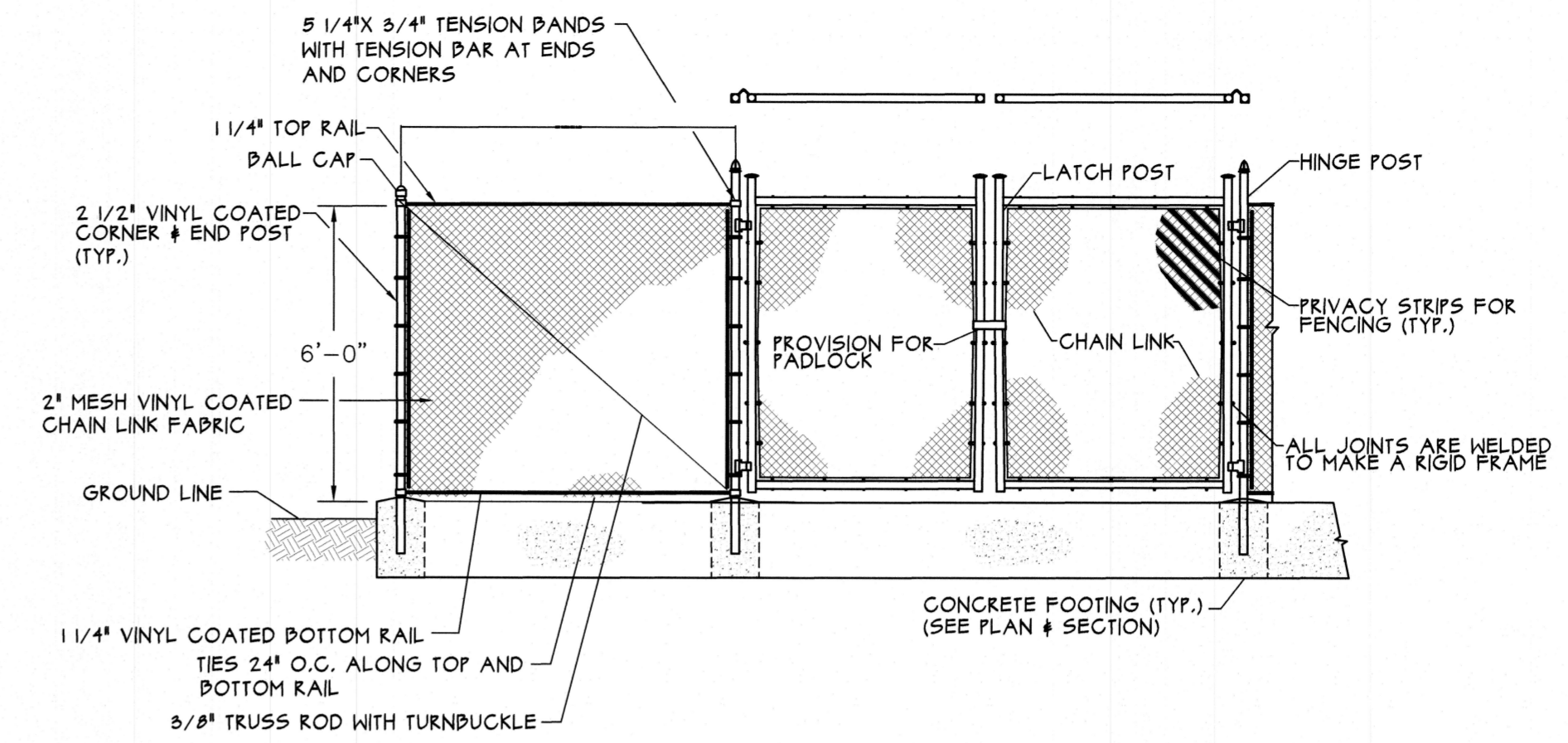


HANDRAIL
(SEE DETAIL)

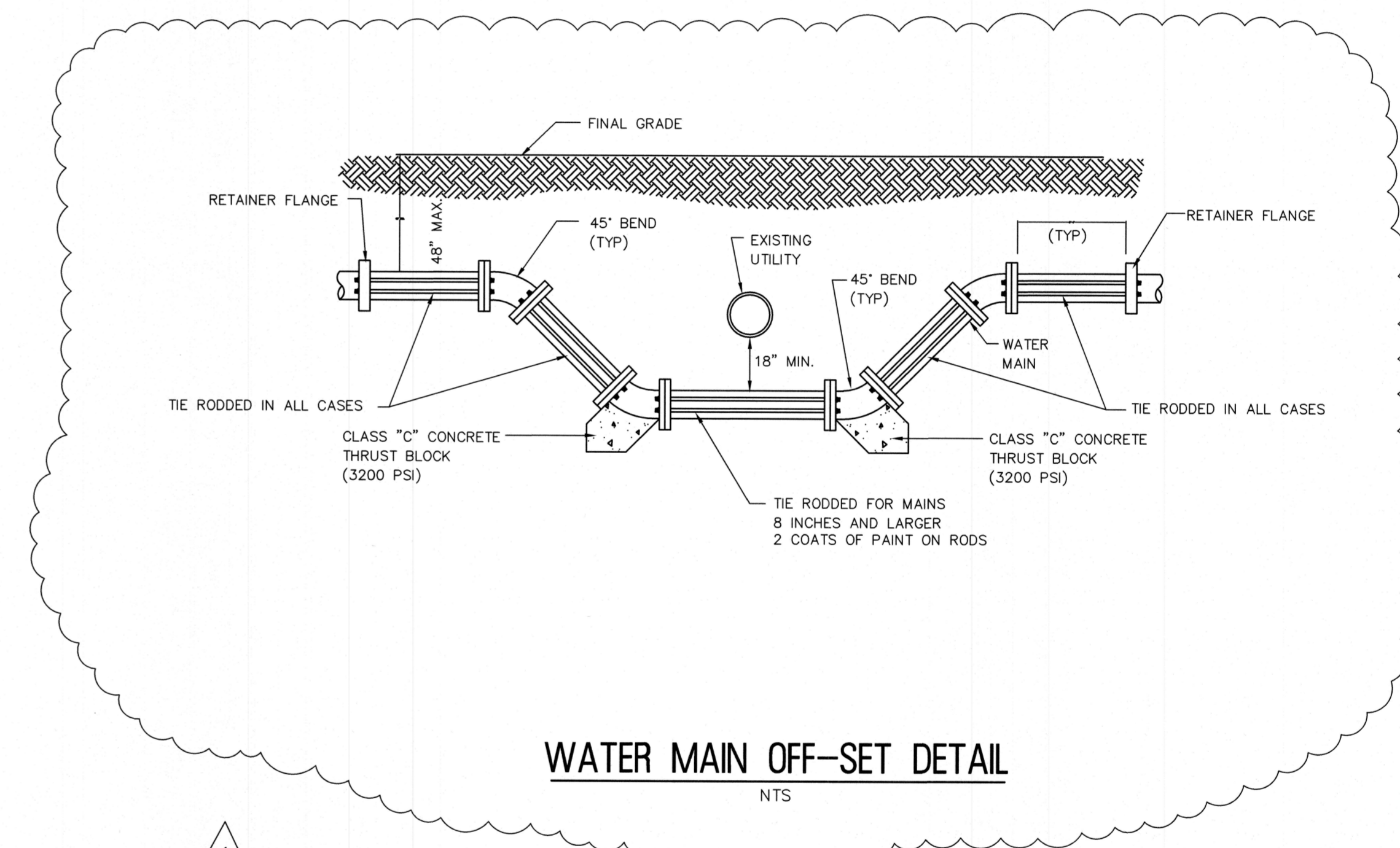


RETAINING WALL SECTION
NTS

A
D-3



DOUBLE SWING GATE & VINYL CLAD CHAIN LINK FENCE
N.T.S.



WATER MAIN OFF-SET DETAIL
NTS

1

RVE
1901
REMINGTON & VERNICK ENGINEERS
2059 SPRINGDALE ROAD
CHERRY HILL, NJ 08003
(856) 795-9595, FAX (856) 795-1882
WEB ADDRESS: RVE.COM
Certification of Authorization: 24 GA 28003300
Excellence • Innovation • Service

Dennis K. Yoder
DATE: 9/14/24
DENNIS K. YODER
NJ PROFESSIONAL ENGINEER LIC. No. 31866

DATE:
STEPHANIE A. CUTHBERT
NJ PROFESSIONAL ENGINEER LIC. No. 42136

PLANS WHICH DO NOT BEAR AN EMBOSSED SEAL ARE NOT VALID

ALL DOCUMENTS PREPARED BY REMINGTON & VERNICK ENGINEERS AND AFFILIATES ARE INSTRUMENTS OF SERVICE IN RESPECT OF THE PROJECT. THEY ARE NOT INTENDED OR REPRESENTED TO BE SUITABLE FOR REUSE BY OWNER OR OTHERS ON EXTENSIONS OF THE PROJECT OR ON ANY OTHER PROJECT. ANY REUSE WITHOUT WRITTEN VERIFICATION OR ADAPTATION BY REMINGTON & VERNICK ENGINEERS AND AFFILIATES FOR THE SPECIFIC PURPOSE INTENDED WILL BE AT OWNERS SOLE RISK AND WITHOUT LIABILITY OR LEGAL EXPOSURE TO REMINGTON & VERNICK ENGINEERS AND AFFILIATES. AND OWNER SHALL INDEMNIFY AND HOLD HARMLESS REMINGTON & VERNICK ENGINEERS AND AFFILIATES FROM ALL CLAIMS, DAMAGES, LOSSES AND EXPENSES ARISING OUT OF OR RESULTING THEREFROM.

No.	REVISION	DATE	BY	CHK
1	DESIGN CHANGE PER ADDENDUM 2	08/14/25	FM	JM

MISCELLANEOUS DETAILS
MERCHANTVILLE PENNSAUKEN WATER COMMISSION
BROWNING ROAD
WATER TREATMENT PLANT IMPROVEMENTS
PENNSAUKEN TOWNSHIP CAMDEN COUNTY NEW JERSEY

DRAWN BY:	DESIGN BY:	CHECKED BY:	SCALE:
FM	FM	JM	AS NOTED
DATE:	SHEET No.:		
3/24	D-3		
JOB No.:	0424M081		