

ELECTRICAL SYMBOLS

(ALL SYMBOLS MAY NOT BE USED ON THIS PROJECT)

	2'x4' LED LIGHT FIXTURE (A - INDICATES FIXTURE TYPE)
	2'x4' EMERGENCY LED LIGHT FIXTURE (AE - INDICATES FIXTURE TYPE)
	2'x2' LED LIGHT FIXTURE
	2'x2' EMERGENCY LED LIGHT FIXTURE
	5'x4' LED LIGHT FIXTURE
	5'x4' EMERGENCY LED LIGHT FIXTURE
	DOWNLIGHT LIGHT FIXTURE
	EMERGENCY DOWNLIGHT LIGHT FIXTURE
	WALL MOUNTED LIGHT FIXTURE
	WALL MOUNTED EMERGENCY LIGHT FIXTURE
	EXIT SIGN (SHADED AREA INDICATES FACE) (ARROW INDICATES DIRECTION) (XW - WALL MOUNTED) (XC - CEILING MOUNTED)
	COMBINATION EXIT SIGN W/ DUAL REMOTE HEADS
	DUAL HEAD EMERGENCY BATTERY BACKUP
	DUAL REMOTE HEADS
	SWITCH, SINGLE POLE TOGGLE
	SWITCH, 3-WAY TOGGLE
	SWITCH, 4-WAY TOGGLE
	SWITCH, DIMMER
	SWITCH, KEY OPERATED
	SWITCH, PILOT LIGHT
	SWITCH, LOW VOLTAGE
	FRACTIONAL HP STARTER
	OCCUPANCY SENSOR - P - PASSIVE INFRARED U - ULTRASONIC D - DUAL TECHNOLOGY
	SITE LIGHT
	UTILITY POLE
	DAYLIGHT SENSOR
	RECEPTACLE, DUPLEX - (K - KEY LOCKING STEEL COVER) (S - SURGE PROTECTOR) (L - LOCKING COVER) (+ - MOUNT 8" ABOVE COUNTERTOP) (T - TAMPER PROOF) (U - DUPLEX WITH USB PORT)
	RECEPTACLE, QUAD (GFI)
	RECEPTACLE, SINGLE
	RECEPTACLE, GFI - (WP-WEATHERPROOF IN-USE COVER)
	RECEPTACLE, EMERGENCY
	RECEPTACLE, SPECIAL (NEMA CONFIGURATION INDICATED)
	RECEPTACLE, DUPLEX FLOOR MOUNT (POKE-THRU)
	RECEPTACLE, CEILING MOUNTED
	FLOOR BOX WITH (2) DUPLEX RECEPTACLES
	DUPLEX RECEPTACLE AND CATV RECEPTACLE
	JUNCTION BOX
	JUNCTION BOX, FLOOR MOUNTED
	JUNCTION BOX, TELEPHONE
	JUNCTION BOX, DATA
	JUNCTION BOX, TELEPHONE/DATA
	JUNCTION BOX, POWER
	ELECTRIC FLUSH VALVE TRANSFORMER JUNCTION BOX - ABOVE CEILING
	PANELBOARD - SURFACE MOUNTED
	PANELBOARD - FLUSH MOUNTED
	CIRCUIT BREAKER IN ENCLOSURE
	CIRCUIT BREAKER
	LOW VOLTAGE DRAWOUT BREAKER
	MEDIUM VOLTAGE DRAWOUT BREAKER
	DELTA CONFIGURATION
	WYE CONFIGURATION
	ELECTRICALLY INTERLOCKED
	ELECTRIC UTILITY METER
	INTERMEDIATE DISTRIBUTION FRAME
	MAIN DISTRIBUTION FRAME
	VARIABLE FREQUENCY DRIVE
	CURRENT TRANSFORMER
	GENERATOR
	TRANSFORMER
	POTENTIAL TRANSFORMER

	MV SWITCH GEAR
	GROUND ROD (10' x 3/4")
	MOTOR
	MANUAL-OFF-AUTO SWITCH
	NON-FUSED DISCONNECT SWITCH - XXX/XXX/XX - INDICATES (RATED FRAME AMPS/VOLTS/# OF POLES)
	FUSED DISCONNECT SWITCH XXX/XXX/XXX/XX - INDICATES (RATED FRAME AMPS/FUSE AMPS/VOLTS/# OF POLES)
	COMBINATION STARTER/DISCONNECT SWITCH
	MAGNETIC STARTER
	KEY OPERATED CONTROL STATION
	MAGNETIC CONTACTOR
	PHOTOCELL
	WIRELESS RELAY SWITCH
	TIME CLOCK SWITCH
	RELAY
	HAND DRYER
	GROUNDING ELECTRODE
	NON FUSED DISCONNECT SWITCH
	FUSED DISCONNECT SWITCH
	FUSED POTENTIAL TRANSFORMER
	AUTOMATIC TRANSFER SWITCH L - LOAD N - NORMAL POWER E - EMERGENCY POWER
	LIGHTNING ARRESTER
	SURGE PROTECTIVE DEVICE WITH DISCONNECT
	HEAT TRACE CABLING
	RESISTOR TEMPERATURE DEVICE
	EXPOSED RACEWAY
	LOW VOLTAGE WIRING
	CONDUIT CONCEALED IN WALLS OR CEILING
	EMERGENCY CIRCUIT
	CONDUIT CONCEALED IN OR UNDER FLOOR OR UNDERGROUND
	NON-SWITCHED CIRCUIT
	HOMERUN - CIRCUIT & PANEL AS INDICATED (2#12 + 1#12G, 3/4"C, UNLESS OTHERWISE NOTED)
	CABLE TRAY
	SURFACE RACEWAY, WIREMOLD
	FIRE ALARM PULL STATION
	FIRE ALARM STROBE LIGHT - (Xxcd - CANDELA RATING)
	FIRE ALARM SPEAKER (SUBSCRIPT 'C' INDICATE CEILING MOUNTED)
	FIRE ALARM/BELL
	COMBINATION FIRE ALARM SPEAKER/STROBE - (Xxcd - CANDELA RATING) (CEILING)
	COMBINATION FIRE ALARM SPEAKER/STROBE - (Xxcd - CANDELA RATING)
	FIRE ALARM CODE BLUE
	PHOTO-ELECTRIC TYPE SMOKE DETECTOR
	HEAT DETECTOR (COMBINATION FT/RR U.O.N., AC-ABOVE CEILING.)
	COMBINATION HEAT/SMOKE DETECTOR
	PHOTO-ELECTRIC TYPE DUCT SMOKE DETECTOR
	FIRE ALARM CONTROL PANEL
	REMOTE ANNUNCIATOR PANEL
	SPRINKLER FLOW SWITCH
	SPRINKLER TAMPER SWITCH
	FIRE ALARM GONG
	FIRE ALARM ANNUNCIATION PANEL
	DIGITAL ALARM COMMUNICATOR TRANSMITTER
	CARBON MONOXIDE TYPE DUCT DETECTOR (WP - WEATHERPROOF)
	CARBON MONOXIDE DETECTOR
	PTZ CAMERA (AUDITORIUM)
	LIGHTING SYSTEM (AUDITORIUM)
	PEOPLE COUNTER SENSOR

	NITROGEN DIOXIDE DETECTOR
	CARBON DIOXIDE DETECTOR
	EMERGENCY GAS SHUTOFF
	EMERGENCY BOILER SHUTOFF
	EMERGENCY ELECTRIC SHUTOFF
	REMOTE KEY PAD
	ELECTRONIC DOOR LOCK
	MAGNETIC DOOR HOLDER
	KEY FOB
	PANIC ALARM BUTTON
	SECURITY/VIDEO CAMERA (WP - WEATHERPROOF) (PTZ - PAN, TILT, ZOOM)
	WIRELESS OCCUPANCY SENSOR
	WIRELESS RELAY SWITCH
	WIRELESS ACCESS CONTROL
	WIRELESS ACCESS POINT
	CARD READER
	ELECTRONIC DOOR CONTACT
	REQUEST TO EXIT
	INFRARED SENSOR
	MOTION SENSOR
	AIR PHONE INTERCOM SYSTEM
	CCTV CAMERA ASSEMBLY W/ DOME COVER
	DUAL CCTV CAMERA ASSEMBLY W/ DOME COVER
	SECURITY MOTION SENSOR
	VOIP OUTLET
	DATA OUTLET - (6 - # OF DROPS)
	COMBINATION VOIP AND DATA OUTLET
	SOUND SYSTEM WALL PHONE
	MASS NOTIFICATION SPEAKER
	SPEAKER - CEILING MOUNTED
	SPEAKER - WALL MOUNTED
	CLOCK/SPEAKER - WALL MOUNTED
	MICROPHONE
	SOUND VOLUME CONTROL
	INTERCOM
	CLOCK/SPEAKER BAFFLE
	HORN LOUDSPEAKER (WP - WEATHERPROOF)
	WALL MOUNTED CLOCK
	BEAM DETECTOR
	PRISM REFLECTOR
	MOTOR STARTER WITH THERMAL OVERLOAD RELAY
	INDICATES EXISTING TO BE DEMOLISHED
	DENOTES POINT OF CONNECTION OF EXISTING TO NEW
	EQUIPMENT DESIGNATION TAG
	SITE LIGHTING (MUSCO LIGHTING SYSTEM)

ABBREVIATIONS

%	PERCENT
AND	AND
°	DEGREE
°C	CENTIGRADE DEGREES
°F	FAHRENHEIT DEGREES
1/C	SINGLE CONDUCTOR
A.I.C.	AMPERES INTERRUPTING CAPACITY
A.T.S.	AUTOMATIC TEMPERATURE CONTROL
A/C	AIR CONDITION
AC	ALTERNATING CURRENT
ADDL.	ADDITIONAL
AF	AMPERE FRAME
A-F	AMPERE FUSE
AFC	ARC FAULT CIRCUIT INTERRUPTER
AFF/A.F.F.	ABOVE FINISHED FLOOR
AFG/A.F.G.	ABOVE FINISHED GRADE
AHU	AIR HANDLING UNIT
AL	ALUMINUM
AMP., A.	AMPERE
APPROX.	APPROXIMATE
ARCH.	ARCHITECTURAL
AT	AMPERE TRIP
ASY.	ASYMMETRICAL
AUX.	AUXILIARY
B.F.C.	BELOW FINISHED CEILING
BKR.	BREAKER
BLDG.	BUILDING
BSMT.	BASEMENT
C/C	CONDUIT
C OF U/CFU	COEFFICIENT OF UTILIZATION
C.T., CT	CURRENT TRANSFORMER
CB, CIR. BKR., C/B	CIRCUIT BREAKER
CCTV	CLOSED CIRCUIT TELEVISION
CKT., CIR, CIRC.	CIRCUIT
CL	CLOSET
CLG.	CEILING
Co./Co.	COMPANY
COAX.	COAXIAL CABLE
COL.	COLUMN
COMP.	COMPLETE
CONC.	CONCRETE
CONDR.	CONDUCTOR
CONN	CONNECTED, CONNECTOR
CONST.	CONSTRUCTION
CONT.	CONTINUATION
CONTR.	CONTRACTOR
COORD.	COORDINATE
CORR.	CORRIDOR
CPU	CENTRAL PROCESSING UNIT
CU	COPPER
CU	CONDENSING UNIT
CU. FT.	CUBIC FEET
CW	CLOCKWISE
D	DEPTH
DEM	DEMAND
DIA.	DIAMETER
DISC.	DISCONNECT SWITCH
DIV.	DIVISION
DN.	DOWN
DPST	DOUBLE POLE SINGLE THROW
DRAWG.	DRAWING
E.C.	ELECTRICAL CONTRACTOR
E.F., EF	EXHAUST FAN
E.H.	ELECTRIC HEATER
E.P.R.	ETHYLENE PROPYLENE RUBBER
E.W.	EACH WAY
EA.	EACH
EHT	ELECTRICAL HEAT TRACING CABLE
ELEC. CLO.	ELECTRICAL CLOSET
ELEC./ELECT.	ELECTRIC
ELEV./EL.	ELEVATION/ELEVATOR
EM	EMERGENCY POWER PACK COMPLETE
EMT	EMERGENCY METALLIC TUBING
ENCL.	ENCLOSURE
ENT.	ENTRANCE
EMERG.	EMERGENCY
EQUIP.	EQUIPMENT
EST.	ESTIMATE
EX./E	EXISTING
EXT.	EXTERNAL/EXTERIOR
E.O.	ELECTRICALLY OPERATED
F.A.	FIRE ALARM
FACP	FIRE ALARM CONTROL PANEL
F.E.	FIRE EXTINGUISHER
F.O.	FIBER OPTIC
FDN.	FOUNDATION
FIG.	FIGURE
FIN.	FINISH/FINISHED
FIXT.	FIXTURE
FL.	FLOOR
FLA	FULL LOAD AMPERES
FLEX.	FLEXIBLE
F.L.M.C.	FLEXIBLE LIQUIDTIGHT METALLIC CONDUIT
FLUOR.	FLUORESCENT
FC	FOOTCANDLE
FT	FAULT TRIP
FT.	FEET

FU.	FUSE/FUSED
G.C.	GENERAL CONTRACTOR
GA.	GAUGE
GALV.	GALVANIZED
GEN.	GENERATOR
GFCI	GROUND FAULT CIRCUIT INTERRUPTER
GFI	GROUND FAULT INTERRUPTER
GRD.	GROUND
G.R.S.	GALVANIZED RIGID STEEL
GTD	GENERATOR TRANSFER DEVICE
H.L.D.	HIGH INTENSITY DISCHARGE
H.O.A.	HAND OFF AUTO
H.P.S.	HIGH PRESSURE SODIUM
HEX.	HEXAGON
HI.	HANDHOLE
HORIZ.	HORIZONTAL
H.P./HP.	HORSEPOWER
HPF	HIGH POWER FACTOR
HT.	HEIGHT
HWH	HOT WATER HEATER
HZ.	HERTZ
IMC	INTERMEDIATE CONDUIT
INC.	INCANDESCENT
INSUL.	INSULATION/INSULATED
ISOL.	ISOLATED
ISP	INTERNET SERVICE PROVIDER
INTRINSICALLY SAFE	INTRINSICALLY SAFE
IT	INFORMATION TECHNOLOGY
IAP	INTRUSION ALARM PANEL
IAPK	INTRUSION ALARM KEYPAD
JB, J	JUNCTION BOX
KAC	THOUSAND AMPERES INTERRUPTING CAPACITY
KVAR	KILOVOLT-AMPERE
KO	KNOCKOUT
KW	KILOWATT
KCMIL	THOUSAND CIRCULAR MILS
KWH	KILOWATT HOUR
KHZ	KILOHERTZ
KV	KILOVOLT
KVA	KILOVOLT-AMPERE
LG.	LENGTH
LF.	LINEAR FEET
LG.	LOCKED ROTOR AMPERES
LRA	LOCKED ROTOR AMPERES
LT.	LIGHT
L.TG.	LIGHTING
M.L.O.	MAIN LUGS ONLY
M/C	MULTI-CONDUCTOR
MANUF., MFR.	MANUFACTURER
MAX.	MAXIMUM
M.B./MB	MAIN BREAKER
M.C.B./MCB	MAIN CIRCUIT BREAKER
MCC	MOTOR CONTROL CENTER
MCM	THOUSAND CIRCULAR MILLS
MDS	MAIN DISTRIBUTION SWITCHBOARD
MDP	MAIN DISTRIBUTION PANEL
MECH.	MECHANICAL
MET.	METALLIC
MF	MAINTENANCE FACTOR
MG	MOTOR GENERATOR
MIN.	MINIMUM
MISC.	MISCELLANEOUS
MTD.	MOUNTED
MTG.	MOUNTING
NC	NEUTRAL
N	NORMAL CLOSED
N.E.C.	NATIONAL ELECTRICAL CODE
NEMA	NATIONAL ELECTRICAL MANUFACTURER ASSOC.
NOT IN CONTRACT	NOT IN CONTRACT
NORMALLY OPEN	NORMALLY OPEN
NO.	NUMBER
No., #	NOT TO SCALE
N.T.S./NTS	NIGHT LIGHT CIRCUIT
NL	NON FUSED
N.F.	NON FUSED
P	POLE
PC	PHOTOCELL
P.I.L.C.	PAPER INSULATED LEAD COVERED
PB, P	PULL BOX, BREAKER OR SWITCH POLE
PANL	PANELBOARD
PORC.	PORCELAIN
PRI.	PRIMARY
POE	POWER OVER ETHERNET
PTD.	PAINTED
PVC	POLYVINYLCHLORIDE
R	RADIUS
RAP	REMOTE ANNUNCIATOR PANEL
R.C.SW.	REMOTE CONTROL SWITCH
REBAR.	REINFORCING BAR
REC.	RECESSED, RECEPTACLE
RECEPT.	RECEPTACLES
REQ'D	REQUIRED
REV.	REVISE/REVISION
RF	RADIO FREQUENCY
RGA	REMOTE GENERATOR ANNUNCIATOR
RGS	RIGID GALVANIZED STEEL CONDUIT
RM.	ROOM
RT	ROOFTOP
S.F.	SQUARE FEET
S.S.	STAINLESS STEEL
SEC.	SECONDARY
SECT.	SECTION
SERV.	SEPARATE
SHT.	SERVICE SHEET

SIG.	SIGNAL
SK.	SKETCH
SN	SOLID NEUTRAL
SPECS.	SPECIFICATIONS
SPD	SURGE PROTECTIVE DEVICE
SQ.	SQUARE
SSRV	SOLID STATE REDUCED VOLTAGE STARTER
STA.	STATION
SURF.	SURFACE
SUSP.	SUSPENDED
SW.	SWITCH
SWBD.	SWITCHBOARD
SYM.	SYMMETRICAL
T.C./TC	TIME CLOCK
TEL.	TELEPHONE
THRU	THROUGH
T.O.S.	TOP OF SLAB (CONCRETE)
TP	TWISTED PAIR
TRANS./XFMR	TRANSFORMER
TYP.	TYPICAL
U.O.N.	UNLESS OTHERWISE NOTED
UH	UNIT HEATER
UL	UNDERWRITING LABORATORIES
UNINT.	UNINTERRUPTIBLE POWER SOURCE
V	VOLTAGE, VOLTS
VD	VOLTAGE DROP
VERT.	VERTICAL
V.I.F./VIF	VERIFY IN FIELD
VS.	VERSUS
W.	WIRE
W.I.	WROUGHT IRON
W/O	WITH
WD.	WITHOUT
WP	WIDE
XLPE	WEATHER PROOF CROSSLINKED POLYETHYLENE

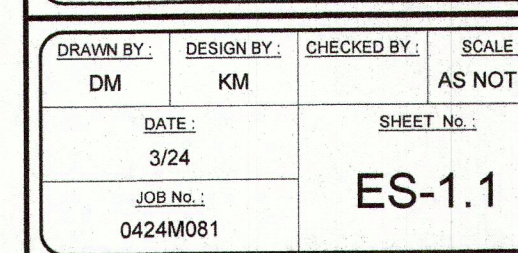
STANDARD MOUNTING HEIGHTS

MOUNTING HEIGHTS FOR EQUIPMENT SHALL BE AS LISTED BELOW UNLESS OTHERWISE SPECIFICALLY LABELED. (UNLESS OTHERWISE NOTED, ALL DIMENSIONS ARE TO THE CENTERLINE OF BOXES.)

SWITCHES	3'-8" A.F.F.
TELEPHONE - WALL TYPE	3'-8" A.F.F.
TELEPHONE - DESK TYPE	1'-6" A.F.F.
RECEPTACLE - GENERAL OFFICE	1'-6" A.F.F.
RECEPTACLE - MECHANICAL ROOMS	3'-0" A.F.F.
FIRE ALARM GONG OR SPEAKER	6'-8" TO BOTTOM OF GONG OR SPEAKER
FIRE ALARM PULL STATION	3'-8" A.F.F. TO CENTER OF PULL
FIRE ALARM STROBE LIGHT	6'-8" A.F.F. TO BOTTOM OF STROBE
MOTION SENSOR	6'-5" A.F.F.
PANELBOARDS	6'-0" TO TOP OF CIRCUIT BREAKER MAX.
EXIT LIGHT	ABOVE DOORS (MIN. 7'-6" A.F.F. CLEAR)
KEY PAD (REMOTE)	3'-8" A.F.F.
DATA OUTLET	1'-6" A.F.F.
VOLUME CONTROL/CALL SWITCH	3'-8" A.F.F.
TIMER (NON-ADA)	4'-6" A.F.F.

WIRE & CONDUIT SIZING SCHEDULE

	WIRE SIZE (AWG/KCMIL)				NO. OF WIRES & CONDUIT SIZE IN INCHES		
AMPS	CKT. TYPE	CONDUCTOR & NEUTRAL	EQUIPMENT GROUND	SUPPLY SIDE BONDING JUMPER	A 2W+G	B 3W+G	C 4W+G
15	1	14	14	8	3/4	3/4	3/4
20	2	12	12	8	3/4	3/4	3/4
30	3	10	10	8	3/4	3/4	3/4
40	4	8	10	8	3/4	3/4	3/4
50	5	6	10	8	3/4	1	1
60	6	4	10	8	1	1-1/4	1-1/4
70	7	4	8	8	1	1-1/4	1-1/4
80	8	3	8	8	1-1/4	1-1/4	1-1/4
90	9	2	8	8	1-1/4	1-1/4	1-1/2
100	10	1	6	6	1-1/4	1-1/2	2
125	11	1	6	6	1-1/4	1-1/2	2
150	12	1/0	6	6	1-1/2	2	2
175	13	2/0	6	4	2	2	2
200	14	3/0	6	4	2	2	2-1/2
225	15	4/0	2	2	2	2	2-1/2
250	16	250 KCMIL	2	2	2	2-1/2	2-1/2
275	17	300 KCMIL	2	2	2	2-1/2	2-1/2
300	18	350 KCMIL	2	2	2	2-1/2	3
325	19	400 KCMIL	1/0	1/0	2	2-1/2	3
350	20	500 KCMIL	1/0	1/0	2-1/2	3	3-1/2
400	21	(2) 4/0	(2) 2	(2) 1/0	---	(2) 2	(2) 2-1/2
500	22	(2) 250 KCMIL	(2) 2	(2) 1/0	---	(2) 2	(2) 2-1/2
600	23	2 350 KCMIL	(2) 1	(2) 2/0	---	(2) 2-1/2	(2) 3
700	24	2 500 KCMIL	(2) 1/0	(2) 2/0	---	(2) 3	(2) 3-1/2
800	25	(3) 300 KCMIL	(3) 1/0	(3) 2/0	---	(3) 2-1/2	(3) 3
1000	26	(3) 400 KCMIL	(3) 2/0	(3) 2/0	---	(3) 3	(3) 3
1100	27	(3) 500 KCMIL	(3) 3/0	(3) 2/0	---	(3) 3	(3) 3-1/2
1200	28	(4) 350 KCMIL	(4) 3/0	(4) 2/0	---	(4) 2-1/2	(4) 3
1500	29	(4) 500 KCMIL	(4) 4/0	(4) 2/0	---	(4) 3	(4) 3-1/2
1600	30	(5) 400 KCMIL	(5) 4/0	(5) 2/0	---	(5) 3	(5) 3
1900	31	(5) 500 KCMIL	(5) 250	(5) 2/0	---	(5) 3	(5) 3-1/2
2000	32	(6) 400 KCMIL	(6) 250	(6) 2/0	---	(6) 3	(6) 3-1/2
2500	33	(7) 500 KCMIL	(7) 350	(7) 2/0	---	(7) 3	(7) 3-1/2
3000	34	(8) 500 KCMIL	(8) 400	(8) 2/0	---	(8) 3	(8) 3-1/2



GRAPHIC SCALE

0 20' 40' 60'

1 INCH = 20 FT.



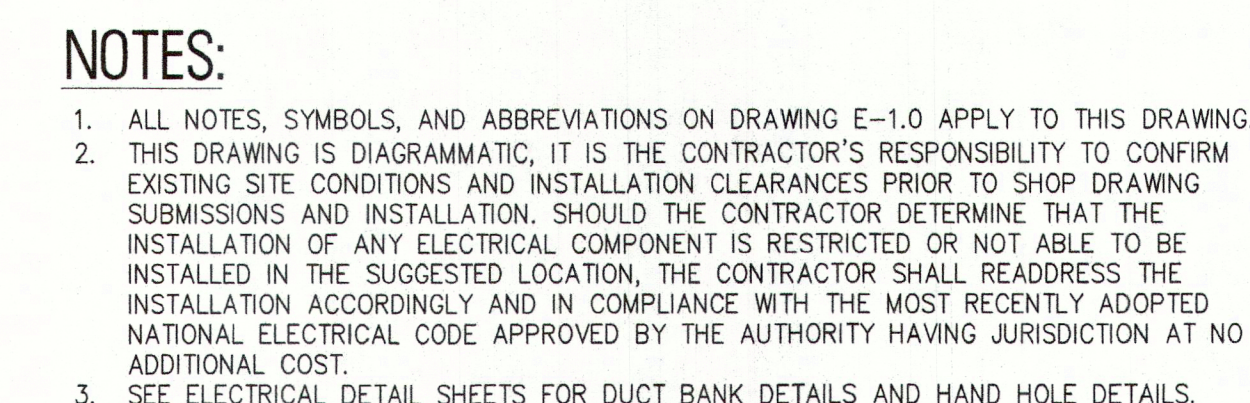
DATE: 09/04/2024
KAVAN R. SMITH
NJ PROFESSIONAL ENGINEER LIC. No. 56794

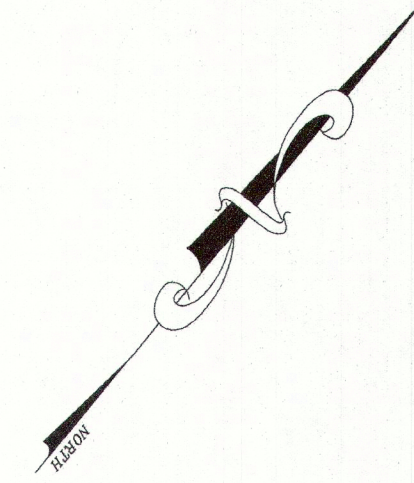
ALL DOCUMENTS PREPARED BY REMINGTON & VERNICK ENGINEERS AND AFFILIATES ARE INSTRUMENTS OF SERVICE IN RESPECT OF THE PROJECT. THEY ARE NOT INTENDED OR REPRESENTED TO BE SUITABLE FOR REUSE BY OWNER OR OTHERS ON EXTENSIONS OF THE PROJECT OR ON ANY OTHER PROJECT. ANY REUSE WITHOUT WRITTEN VERIFICATION OR ADAPTATION BY REMINGTON & VERNICK ENGINEERS AND AFFILIATES FOR THE SPECIFIC PURPOSE INTENDED WILL BE AT OWNERS SOLE RISK AND WITHOUT LIABILITY OR LEGAL EXPOSURE TO REMINGTON & VERNICK ENGINEERS AND AFFILIATES. ANY REUSE WITHOUT SUCH VERIFICATION MAY CAUSE HARM TO REMINGTON & VERNICK ENGINEERS AND AFFILIATES FROM ALL CLAIMS, DAMAGES, LOSSES AND EXPENSES ARISING OUT OF OR RESULTING THEREFROM.

MERCHANTVILLE PENNSAUKEN WATER COMMISSION
BROWNING ROAD
WATER TREATMENT PLANT IMPROVEMENTS

MERCHANTVILLE P
BRO
WATER TREATME
PENNSAUKEN TOWNSHIP C

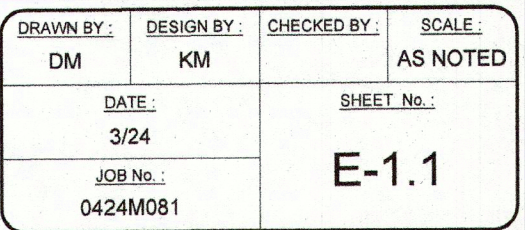
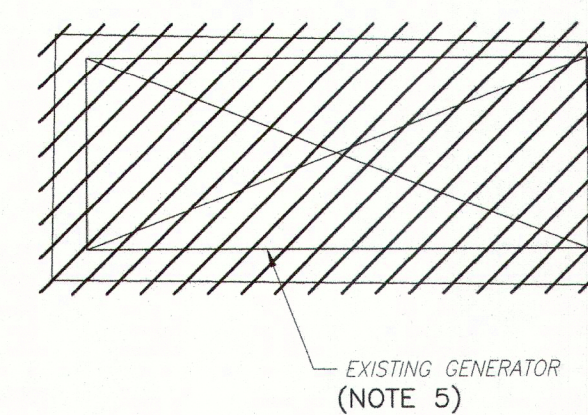
<u>DRAWN BY :</u> DM	<u>DESIGN BY :</u> KM	<u>CHECKED BY :</u>	<u>SCALE :</u> AS NOTED
<u>DATE :</u> 3/24		<u>SHEET No. :</u> ES-2.1	
<u>JOB No. :</u> 0424M081			



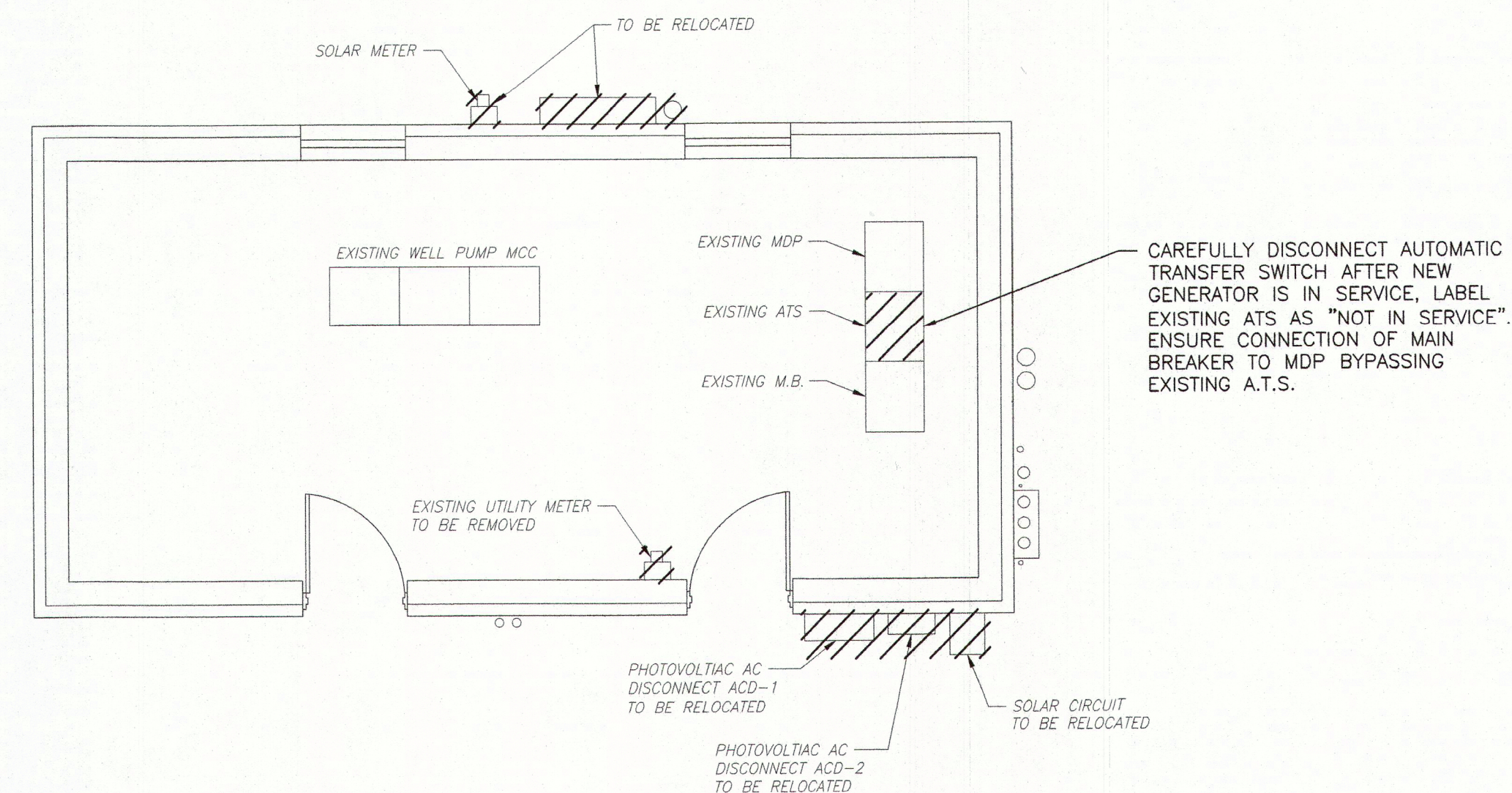


1

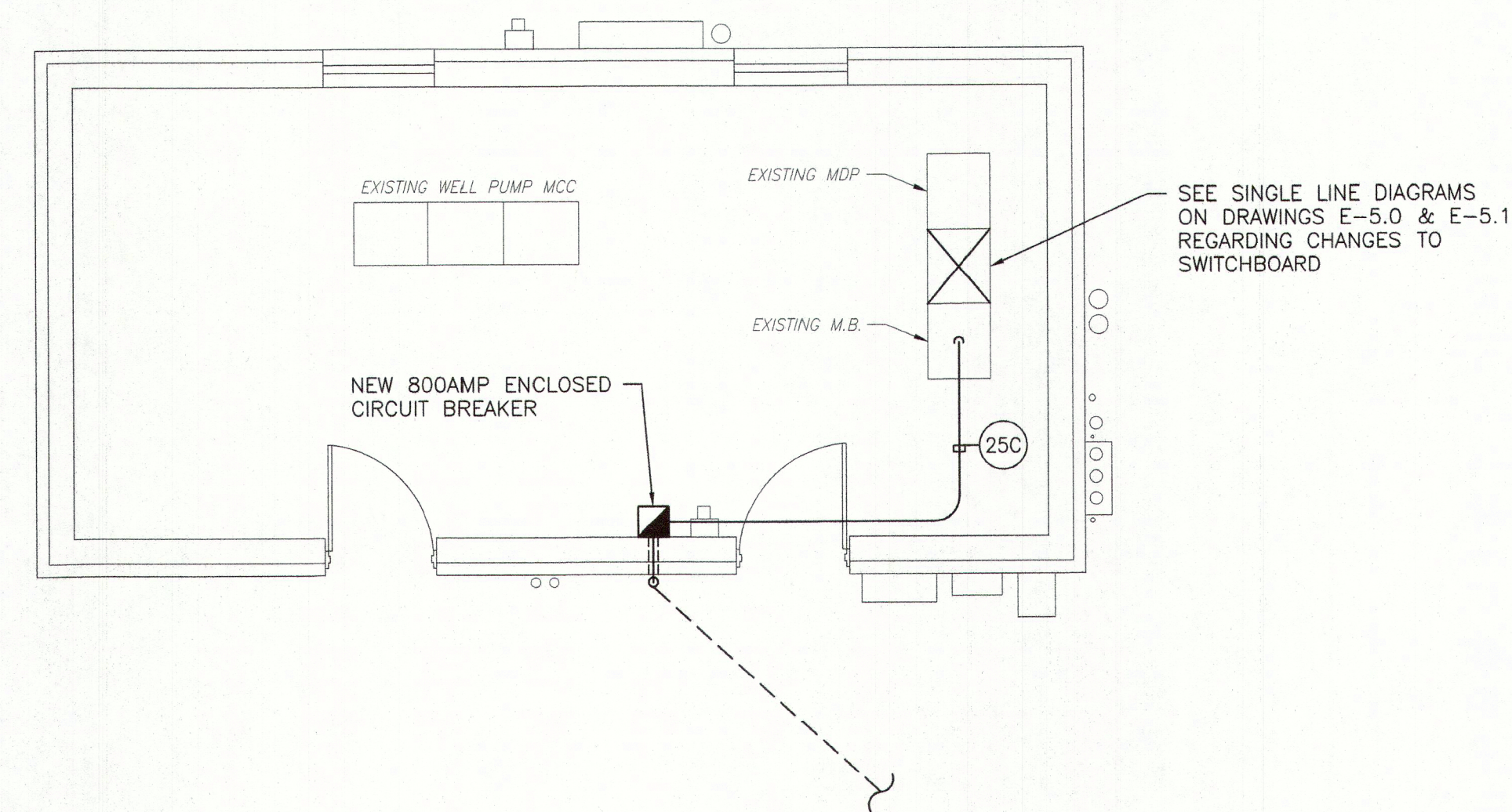
1. ALL NOTES, SYMBOLS, AND ABBREVIATIONS ON DRAWING E-10 APPLY TO THIS DRAWING.
2. THIS DEMOLITION PLAN HAS BEEN PROVIDED AS A GUIDE. HOWEVER, ALL DEMOLITION REQUIRED TO SUCCESSFULLY COMPLETE THIS PROJECT SHALL BE INCLUDED IN THE SCOPE OF WORK. IT IS THE INTENT OF THE PLANS AND SPECIFICATIONS TO SECURE A COMPLETELY INTERCONNECTED AND FUNCTIONING SYSTEM AND IF ANY WORKMANSHIP OR MATERIALS ARE REQUIRED WHICH ARE OBVIOUSLY NECESSARY TO CARRY OUT THE FULL INTENT AND MEANING OF THE PLANS AND SPECIFICATIONS OR TO BE REASONABLY INFERRED THEREFROM, THE COST OF SUCH WORKMANSHIP OR MATERIALS SHALL BE INCLUDED IN THE SCOPE OF WORK.
3. COORDINATE WITH PUMP SUPPLIER/CONTRACTOR FOR THE DISCONNECTION OF EXISTING PUMP AND MOTOR, PREPARE FOR NEW.
4. COORDINATE WITH PUMP SUPPLIER/CONTRACTOR FOR THE DISCONNECTION AND REMOVAL OF PUMP FEEDER AND DISCONNECT IT IN ITS ENTIRETY, PREPARE FOR NEW.
5. CAREFULLY DISCONNECT AND SALVAGE EXISTING GENERATOR. THE CONTRACTOR SHALL HAVE THE GENERATOR DECOMMISSIONED FOR SAFE STORAGE (MOTHBALLED) AND DELIVERED TO OWNER (UNLESS INFORMED OTHERWISE BY OWNER).
6. CAREFULLY DISCONNECT EXISTING MOTOR CONTROLLER FOR HIGH SERVICE PUMPS. REVISE EXISTING CONTROLLER CONTROLS TO NEW REMOTE VFD'S.



DATE: 09/04/2024
KAVAN R. SMITH
NJ PROFESSIONAL ENGINEER LIC. No. 567



1 ELECTRICAL DEMOLITION PLAN
ELECTRICAL BUILDING
SCALE: 1/4"=1'-0"



2 ELECTRICAL PROPOSED PLANS
ELECTRICAL BUILDING
SCALE: 1/4"=1'-0"

- ## NOTES:
1. ALL NOTES, SYMBOLS, AND ABBREVIATIONS ON DRAWING E-1.0 APPLY TO THIS DRAWING
 2. THIS DRAWING IS DIAGRAMMATIC. IT IS THE CONTRACTOR'S RESPONSIBILITY TO CONFIRM EXISTING SITE CONDITIONS AND INSTALLATION CLEARANCES PRIOR TO SHOP DRAWING SUBMISSIONS AND INSTALLATION. SHOULD THE CONTRACTOR DETERMINE THAT THE INSTALLATION OF ANY ELECTRICAL COMPONENT IS RESTRICTED OR NOT ABLE TO BE INSTALLED IN THE SUGGESTED LOCATION, THE CONTRACTOR SHALL ADDRESS THE INSTALLATION ACCORDINGLY AND IN COMPLIANCE WITH THE MOST RECENTLY ADOPTED NATIONAL ELECTRICAL CODE APPROVED BY THE AUTHORITY HAVING JURISDICTION AT NO ADDITIONAL COST.

[illegible]

<h1 style="text-align: center;">ELECTRICAL DEMOLITION AND FLOOR PLANS ELECTRICAL BUILDING</h1>				<p style="text-align: center;">MERCHANTVILLE PENNSAUKEN WATER COMMISSION</p>	
<p style="text-align: center;">BROWNING ROAD</p>				<p style="text-align: center;">WATER TREATMENT PLANT IMPROVEMENTS</p>	
<p style="text-align: center;">PENNSAUKEN TOWNSHIP</p>				<p style="text-align: center;">CAMDEN COUNTY</p>	
<p style="text-align: center;">NEW JERSEY</p>					

DRAWN BY: DM	DESIGN BY: KM	CHECKED BY:	SCALE: AS NOTED
DATE: 3/24			
JOB No.: 0424M081			

SHEET No.:

E-2.0