

1 HIGH SERVICE PUMP BUILDING ELECTRICAL POWER FLOOR PLAN
SCALE: 1/4"=1'-0"

NOTES:

1. ALL NOTES, SYMBOLS, AND ABBREVIATIONS ON DRAWING E-1.0 APPLY TO THIS DRAWING.
2. THIS DRAWING IS DIAGRAMMATIC, IT IS THE CONTRACTOR'S RESPONSIBILITY TO CONFIRM EXISTING SITE CONDITIONS AND INSTALLATION CLEARANCES PRIOR TO SHOP DRAWING SUBMISSIONS AND INSTALLATION. SHOULD THE CONTRACTOR DETERMINE THAT THE INSTALLATION OF ANY ELECTRICAL COMPONENT IS RESTRICTED OR NOT ABLE TO BE INSTALLED IN THE SUGGESTED LOCATION, THE CONTRACTOR SHALL READDRESS THE INSTALLATION ACCORDINGLY AND IN COMPLIANCE WITH THE MOST RECENTLY ADOPTED NATIONAL ELECTRICAL CODE APPROVED BY THE AUTHORITY HAVING JURISDICTION AT NO ADDITIONAL COST.

RVE
1901
REMINGTON & VERNICK ENGINEERS
2059 SPRINGDALE ROAD
CHERRY HILL, NJ 08003
(856) 795-9595, FAX (856) 795-1882
WEB ADDRESS : RVE.COM
Certification of Authorization: 24 GA 28003300
Excellence • Innovation • Service

DATE:
DENNIS K. YODER
NJ PROFESSIONAL ENGINEER LIC. No. 31866

DATE: *09/04/2024*
KAVAN R. SMITH
NJ PROFESSIONAL ENGINEER LIC. No. 56794



PLANS WHICH DO NOT BEAR AN EMBOSSED SEAL ARE NOT VALID

ALL DOCUMENTS PREPARED BY REMINGTON & VERNICK ENGINEERS AND AFFILIATES ARE INSTRUMENTS OF SERVICE IN RESPECT OF THE PROJECT. THEY ARE NOT INTENDED OR REPRESENTED TO BE SUITABLE FOR REUSE BY OWNER OR OTHERS ON EXTENSIONS OF THE PROJECT OR ON ANY OTHER PROJECT. ANY REUSE WITHOUT WRITTEN VERIFICATION OR ADAPTATION BY REMINGTON & VERNICK ENGINEERS AND AFFILIATES FOR THE SPECIFIC PURPOSE INTENDED WILL BE AT OWNERS SOLE RISK AND WITHOUT LIABILITY OR LEGAL EXPOSURE TO REMINGTON & VERNICK ENGINEERS AND AFFILIATES. AND OWNER SHALL INDEMNIFY AND HOLD HARMLESS REMINGTON & VERNICK ENGINEERS AND AFFILIATES FROM ALL CLAIMS DAMAGES, LOSSES AND EXPENSES ARISING OUT OF OR RESULTING THEREFROM.

NO.	REVISION	DATE	BY

HIGH SERVICE PUMP BUILDING ELECTRICAL POWER FLOOR PLAN
MERCHANTVILLE PENNSAUKEN WATER COMMISSION
BROWNING ROAD
WATER TREATMENT PLANT IMPROVEMENTS
PENNSAUKEN TOWNSHIP CAMDEN COUNTY NEW JERSEY

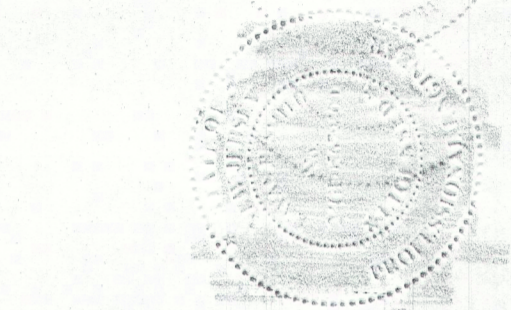
DRAWN BY:	DESIGN BY:	CHECKED BY:	SCALE:
DM	KM		AS NOTED
DATE:	SHEET No.:		
3/24	E-3.5		
JOB No.:	0424M081		



1901
REMINGTON & VERNICK ENGINEERS
 2059 SPRINGDALE ROAD
 CHERRY HILL, NJ 08003
 (856) 795-9595, FAX (856) 795-1882
 WEB ADDRESS : RVE.COM
Certification of Authorization: 24 GA 28003300
Excellence • Innovation • Service

DATE:
DENNIS K. YODER
 NJ PROFESSIONAL ENGINEER LIC. No. 31866

DATE: 09/04/2024
Kavan R. Smith
KAVAN R. SMITH
 NJ PROFESSIONAL ENGINEER LIC. No. 56794



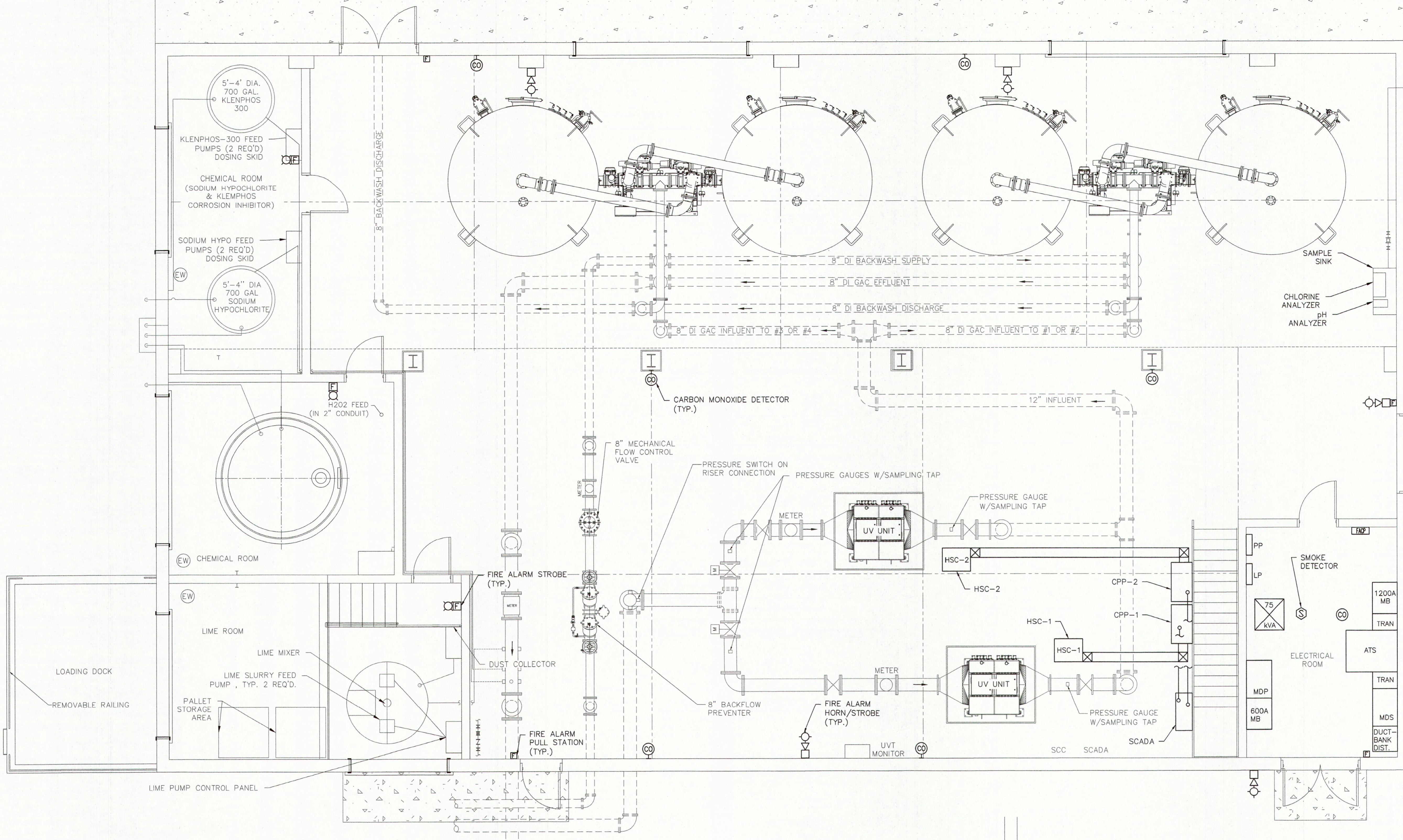
PLANS WHICH DO NOT BEAR AN EMBOSSED SEAL ARE NOT VALID

ALL DOCUMENTS PREPARED BY REMINGTON & VERNICK ENGINEERS AND AFFILIATES ARE INSTRUMENTS OF SERVICE IN RESPECT OF THE PROJECT. THEY ARE NOT INTENDED OR REPRESENTED TO BE SUITABLE FOR REUSE BY OWNERS OR OTHERS ON EXTENSIONS OF THE PROJECT OR ON ANY OTHER PROJECT. ANY REUSE WITHOUT WRITTEN VERIFICATION OR ADAPTATION BY REMINGTON & VERNICK ENGINEERS AND AFFILIATES FOR THE SPECIFIC PURPOSE INTENDED WILL BE AT OWNERS SOLE RISK AND VERNICK ENGINEERS AND AFFILIATES AND OWNER SHALL INDEMNIFY AND HOLD HARMLESS REMINGTON & VERNICK ENGINEERS AND AFFILIATES FROM ALL CLAIMS, DAMAGES, LOSSES AND EXPENSES ARISING OUT OF OR RESULTING THEREFROM.

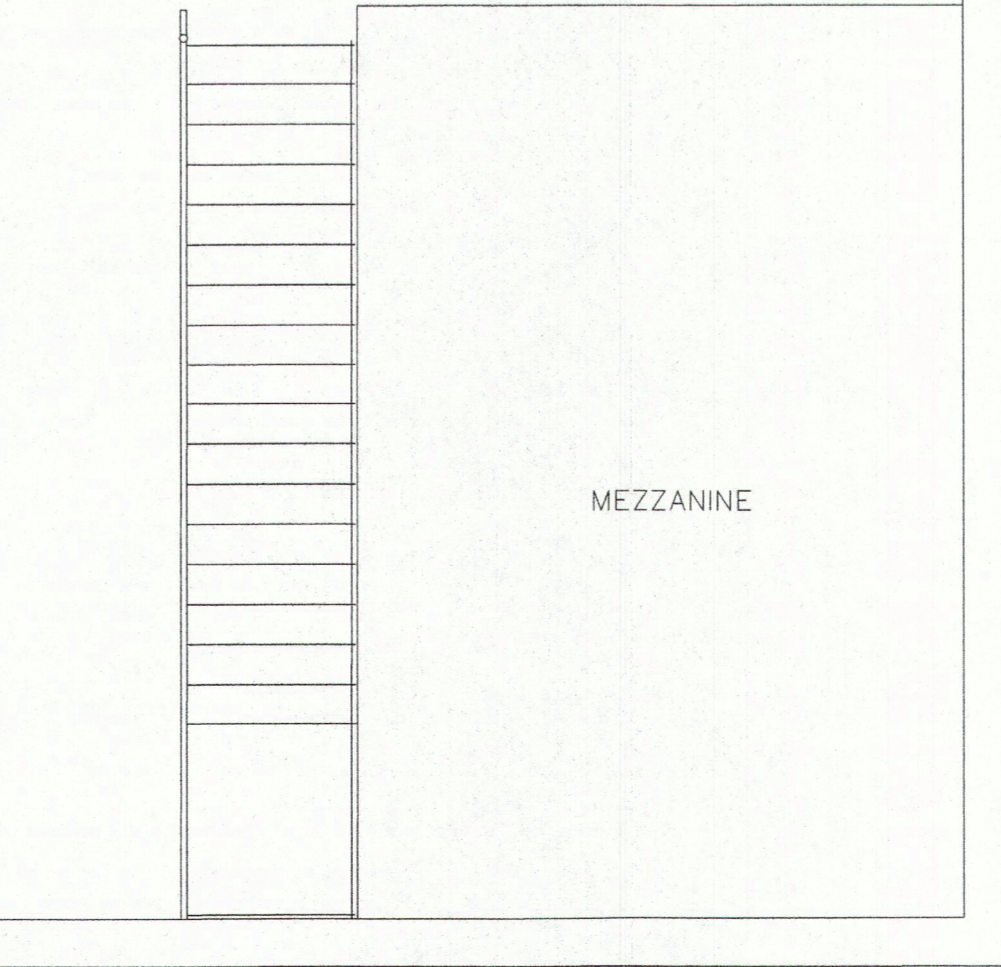
NO.	REVISION	DATE	BY	CHK

ELECTRICAL SYSTEMS FLOOR PLAN
 MERCHANTVILLE PENNSAUKEN WATER COMMISSION
 BROWNING ROAD
WATER TREATMENT PLANT IMPROVEMENTS
 PENNSAUKEN TOWNSHIP CAMDEN COUNTY NEW JERSEY

DRAWN BY:	DESIGN BY:	CHECKED BY:	SCALE:
DM	KM		AS NOTED
DATE:		SHEET No.:	
3/24			
JOB No.:			
0424M081			E-4.1



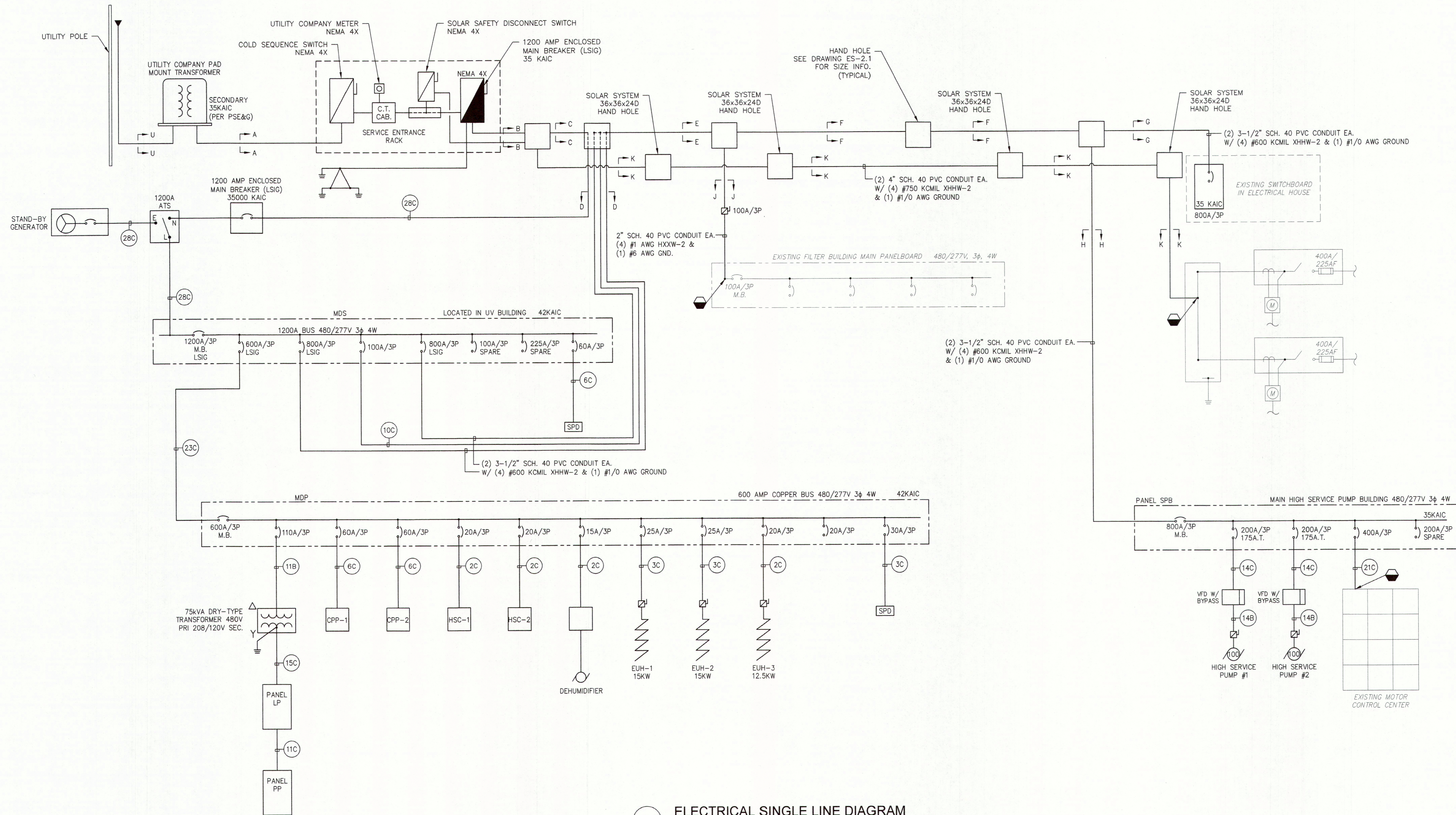
1 ELECTRICAL SYSTEMS FLOOR PLAN
 SCALE: 1/4"=1'-0"



2 ELECTRICAL SYSTEMS MEZZANINE PLAN
 SCALE: 1/4"=1'-0"

NOTES:

- ALL NOTES, SYMBOLS, AND ABBREVIATIONS ON DRAWING E-1.0 APPLY TO THIS DRAWING.
- THIS DRAWING IS DIAGRAMMATIC. IT IS THE CONTRACTOR'S RESPONSIBILITY TO CONFIRM EXISTING SITE CONDITIONS AND INSTALLATION CLEARANCES PRIOR TO SHOP DRAWING SUBMISSIONS AND INSTALLATION. SHOULD THE CONTRACTOR DETERMINE THAT THE INSTALLATION OF ANY ELECTRICAL COMPONENT IS RESTRICTED OR NOT ABLE TO BE INSTALLED IN THE SUGGESTED LOCATION, THE CONTRACTOR SHALL READDRESS THE INSTALLATION ACCORDINGLY AND IN COMPLIANCE WITH THE MOST RECENTLY ADOPTED NATIONAL ELECTRICAL CODE APPROVED BY THE AUTHORITY HAVING JURISDICTION AT NO ADDITIONAL COST.

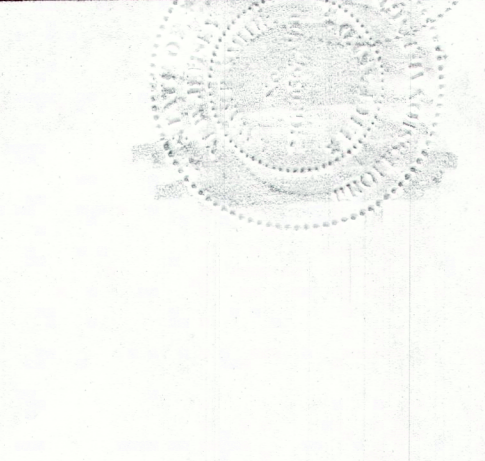


1 ELECTRICAL SINGLE LINE DIAGRAM
SCALE: NONE

RVE
1901
REMINGTON & VERNICK ENGINEERS
2059 SPRINGDALE ROAD
CHERRY HILL, NJ 08003
(856) 795-9595, FAX (856) 795-1882
WEB ADDRESS: RVE.COM
Certification of Authorization: 24 GA 28003300
Excellence • Innovation • Service

DATE:
DENNIS K. YODER
NJ PROFESSIONAL ENGINEER LIC. No. 31866

DATE: *Kavan Smith*
KAVAN R. SMITH
NJ PROFESSIONAL ENGINEER LIC. No. 56794



PLANS WHICH DO NOT BEAR AN EMBOSSED SEAL ARE NOT VALID.

ALL DOCUMENTS PREPARED BY REMINGTON & VERNICK ENGINEERS AND AFFILIATES ARE INSTRUMENTS OF SERVICE IN RESPECT OF THE PROJECT. THEY ARE NOT INTENDED OR REPRESENTED TO BE SUITABLE FOR REUSE BY OWNER OR OTHERS ON EXTENSIONS OF THE PROJECT OR ON ANY OTHER PROJECT. ANY REUSE WITHOUT WRITTEN VERIFICATION OR ADAPTATION BY REMINGTON & VERNICK ENGINEERS AND AFFILIATES FOR THE SPECIFIC PURPOSE INTENDED WILL BE AT OWNERS SOLE RISK AND WITHOUT LIABILITY OR LEGAL EXPOSURE TO REMINGTON & VERNICK ENGINEERS AND AFFILIATES, AND OWNER SHALL INDEMNIFY AND HOLD HARMLESS REMINGTON & VERNICK ENGINEERS AND AFFILIATES FROM ALL CLAIMS, DAMAGES, LOSSES AND EXPENSES ARISING OUT OF OR RESULTING THEREFROM.

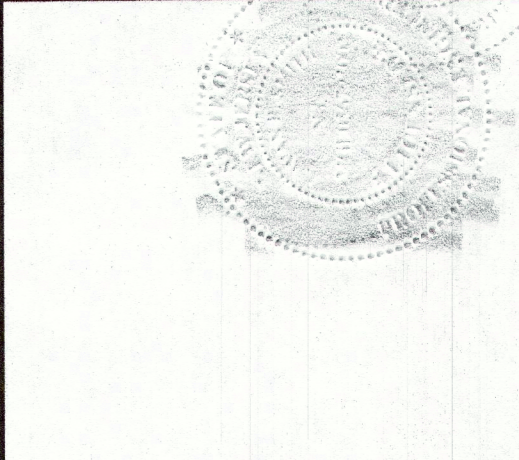
NO.	REVISION	DATE	BY (CHK)

ELECTRICAL SINGLE LINE DIAGRAM
MERCHANTVILLE PENNSAUKEN WATER COMMISSION
BROWNING ROAD
WATER TREATMENT PLANT IMPROVEMENTS
PENNSAUKEN TOWNSHIP CAMDEN COUNTY NEW JERSEY

DRAWN BY: DM	DESIGN BY: KM	CHECKED BY:	SCALE: AS NOTED
DATE: 3/24	JOB No.: 0424M081	SHEET No.:	E-5.1

DATE:
DENNIS K. YODER
NJ PROFESSIONAL ENGINEER LIC. No. 31666

DATE: *Kavan Smith*
KAVAN R. SMITH
NJ PROFESSIONAL ENGINEER LIC. No. 56794



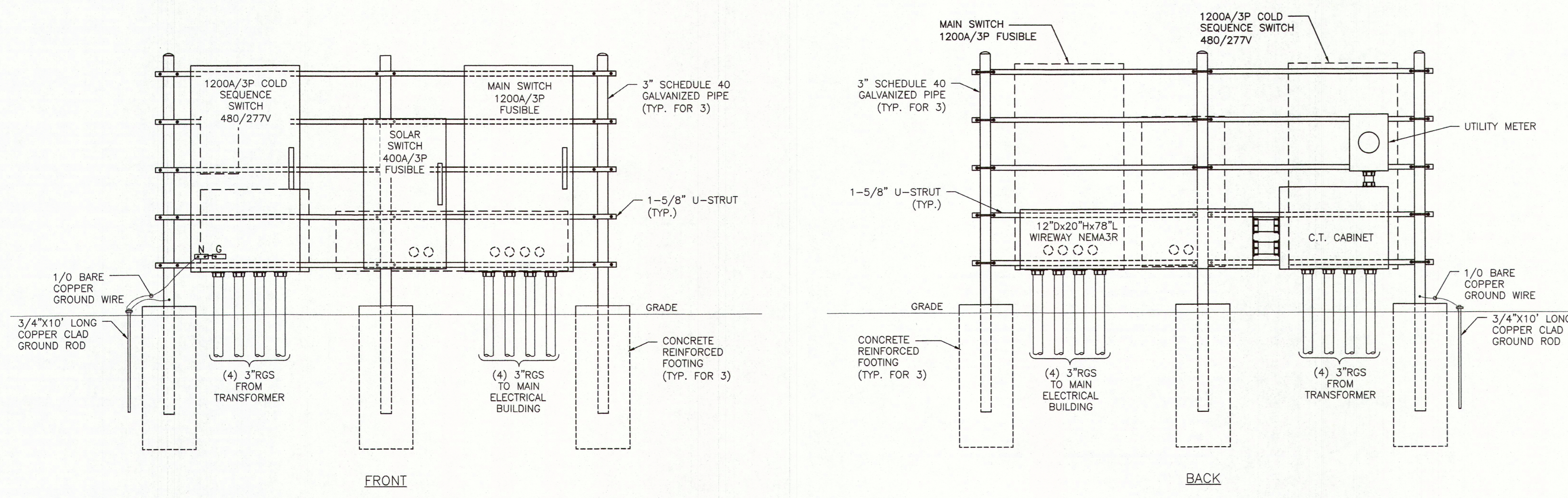
PLANS WHICH DO NOT BEAR AN EMBOSSED SEAL ARE NOT VALID

ALL DOCUMENTS PREPARED BY REMINGTON & VERNICK ENGINEERS AND AFFILIATES ARE INSTRUMENTS OF SERVICE IN RESPECT OF THE PROJECT. THEY ARE NOT INTENDED OR REPRESENTED TO BE SUITABLE FOR REUSE BY OWNERS OR OTHERS ON EXTENSIONS OF THE PROJECT OR ON ANY OTHER PROJECT. ANY REUSE WITHOUT WRITTEN VERIFICATION OR ADAPTATION BY REMINGTON & VERNICK ENGINEERS AND AFFILIATES FOR THE SPECIFIC PURPOSE INTENDED WILL BE AT OWNERS SOLE RISK AND WITHOUT LIABILITY OR LEGAL EXPOSURE TO REMINGTON & VERNICK ENGINEERS AND AFFILIATES. AND OWNER SHALL INDEMNIFY AND HOLD HARMLESS REMINGTON & VERNICK ENGINEERS AND AFFILIATES FROM ALL CLAIMS, DAMAGES, LOSSES AND EXPENSES ARISING OUT OF OR RESULTING THEREFROM

No.	REVISION	DATE	BY	CHK

ELECTRICAL DETAILS
MERCHANTVILLE PENNSAUKEN WATER COMMISSION
BROWNING ROAD
WATER TREATMENT PLANT IMPROVEMENTS
PENNSAUKEN TOWNSHIP CAMDEN COUNTY NEW JERSEY

DRAWN BY: DM	DESIGN BY: KM	CHECKED BY:	SCALE: AS NOTED
DATE: 3/24	JOB No.: 0424M081	SHEET No.: E-6.1	



1 ELECTRICAL RACK DETAIL
SCALE: N.T.S.

