



REMINGTON & VERNICK ENGINEERS
 2059 SPRINGDALE ROAD
 CHERRY HILL, NJ 08003
 (856) 795-9595, FAX (856) 795-1882
 WEB ADDRESS: RVE.COM
 Certification of Authorization: 24 GA 28003300
 Excellence • Innovation • Service

Dennis K. Yoder
 DATE: 9-4-24

DENNIS K. YODER
 PROFESSIONAL ENGINEER LIC. NO. 11866

Christopher A. Savonaro
 DATE: 5-7-2024

CHRISTOPHER A. SAVONARO
 NJ PROFESSIONAL ENGINEER LIC. NO. 40059

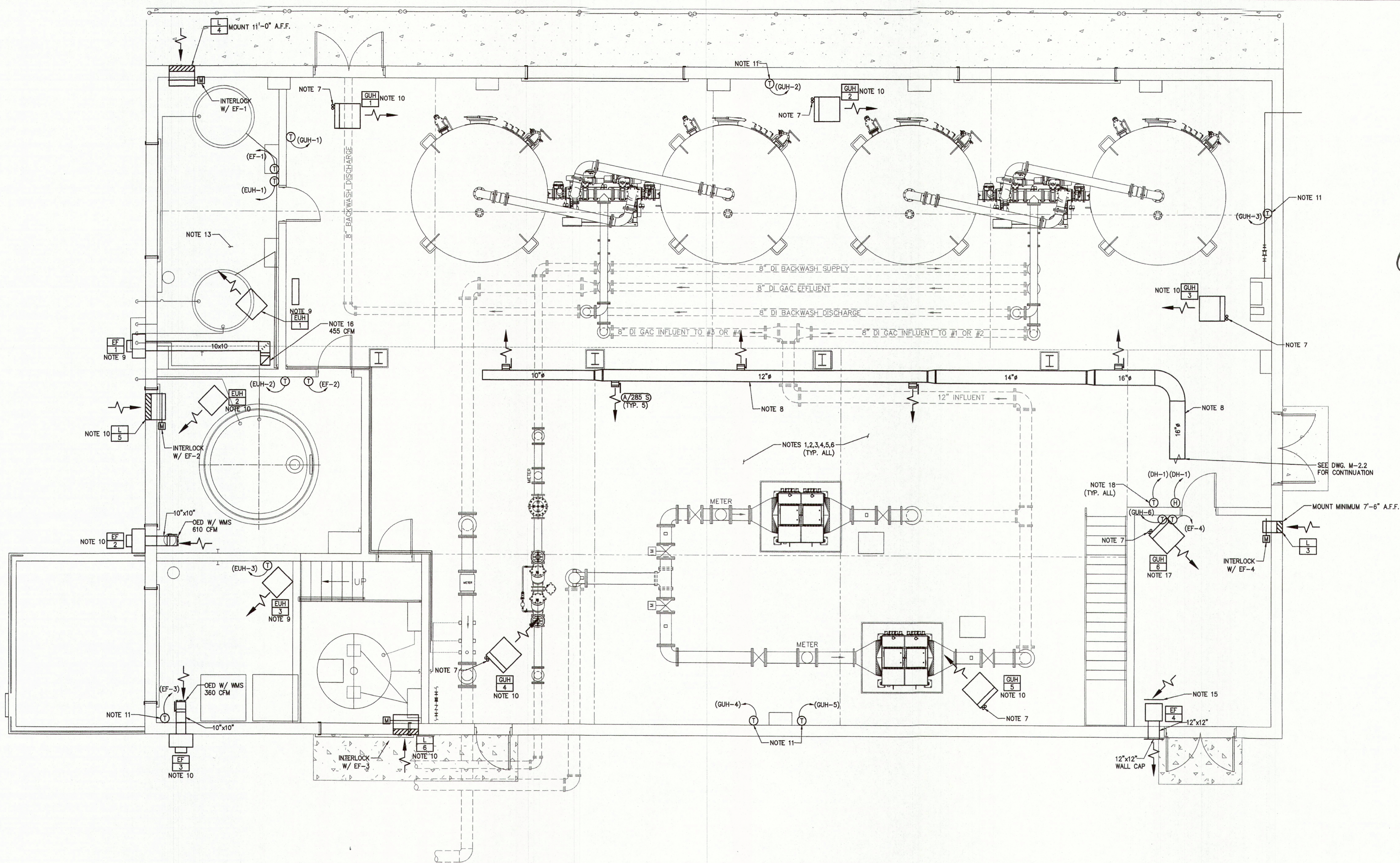
PLANS WHICH DO NOT BEAR AN EMBOSSED SEAL ARE NOT VALID.

ALL DOCUMENTS PREPARED BY REMINGTON & VERNICK ENGINEERS AND AFFILIATES ARE INSTRUMENTS OF SERVICE IN RESPECT OF THE PROJECT. THEY ARE NOT INTENDED OR REPRESENTED TO BE SUITABLE FOR REUSE BY OWNER OR OTHERS ON EXTENSIONS OF THE PROJECT OR ON ANY OTHER PROJECT. ANY REUSE WITHOUT WRITTEN VERIFICATION OR ADAPTATION BY REMINGTON & VERNICK ENGINEERS AND AFFILIATES FOR THE SPECIFIC PURPOSE INTENDED WILL BE AT OWNERS SOLE RISK AND WITHOUT LIABILITY OR LEGAL EXPOSURE TO REMINGTON & VERNICK ENGINEERS AND AFFILIATES. OWNER SHALL INDEMNIFY AND HOLD HARMLESS REMINGTON & VERNICK ENGINEERS AND AFFILIATES FROM ALL CLAIMS, DAMAGES, LOSSES AND EXPENSES ARISING OUT OF OR RESULTING THEREFROM.

NO.	REVISION	DATE	BY

MECHANICAL FLOOR PLAN
 MERCANTVILLE PENNSAUKEN WATER COMMISSION
 BROWNING ROAD
 WATER TREATMENT PLANT IMPROVEMENTS
 PENNSAUKEN TOWNSHIP
 CAMDEN COUNTY
 NEW JERSEY

DATE	SCALE
3/24	AS NOTED
0424M081	M-2.1



NOTES:

- ALL NOTES, SYMBOLS, AND ABBREVIATIONS ON DRAWING M-1.0 APPLY TO THIS DRAWING.
- SEE BUILDING ELEVATIONS FOR LOUVER LOCATIONS AND ELEVATIONS.
- ALL DEVICES (SENSORS/ THERMOSTATS/ ALARMS/ ETC.) TO BE SUITABLE FOR INSTALLATION IN THE CORROSIVE ENVIRONMENTS. DEVICES IN CHEMICAL STORAGE AND FEED ROOMS SHALL BE EXPLOSION PROOF.
- DUCTWORK AND PIPING ROUTINGS SHOWN ARE APPROXIMATE. THE CONTRACTOR BE RESPONSIBLE FOR FINAL ROUTINGS IN THE FIELD TO AVOID INTERFERENCES. CONTRACTOR COORDINATE DUCTWORK/ UNIT INSTALLATION WITH THE STRUCTURAL STEEL, ELECTRICAL CONDUIT, SYSTEMS WIRING/ CABLE, CLOCK SYSTEM, FIRE PROTECTION PIPING, PLUMBING PIPING (SANITARY DRAINAGE, ROOF DRAINAGE, DOMESTIC HOT/ COLD WATER AND GAS PIPING) ETC. AS REQUIRED. ALL MODIFICATIONS MADE TO THE DUCTWORK OR PIPING TO RESOLVE INTERFERENCES SHALL BE PROVIDED BY THE CONTRACTOR AT NO ADDITIONAL COST TO THE OWNER.
- NOT ALL INLINE DEVICES (VALVES, DAMPERS, REDUCERS, ETC.) HAVE BEEN SHOWN ON THE PLANS FOR CLARITY. SEE PIPING DETAILS ON MECHANICAL DETAIL DRAWINGS FOR ADDITIONAL INFORMATION. PROVIDE ALL INLINE DEVICES (VALVES, DAMPERS, REDUCERS, GAUGES, ETC.) AS REQUIRED TO COMPLETE THE INSTALLATION EVEN IF NOT SPECIFICALLY SHOWN ON THE PLANS OR DETAILS.
- MAINTAIN MINIMUM CLEARANCES TO COMBUSTIBLE MATERIALS AS PER MANUFACTURER'S RECOMMENDATIONS AND ALL APPLICABLE CODES.
- 4" FLUE VENT AND 4" INTAKE UP THROUGH ROOF. PROVIDE FLUE WITH 3M FIRE MASTER DUCT WRAP. PROVIDE FLUE LISTED CAP AND INTAKE PER THE MANUFACTURER'S RECOMMENDATIONS.
- PROVIDE DOUBLE WALL SPIRAL ROUND/ RECTANGULAR DUCTWORK. MOUNT TIGHT TO CEILING.
- MOUNT HEATER A MINIMUM OF 12'-0" A.F.F.
- MOUNT HEATER A MINIMUM OF 14'-0" A.F.F.
- PROVIDE MOUNTING HARDWARE FOR THE THERMOSTAT SUCH THAT THEIR IS A MINIMUM OF 3" OF AIRSPACE BETWEEN THE THERMOSTAT AND THE WALL.
- PROVIDE REACTIVATION AIR DUCTWORK IN ACCORDANCE WITH THE MANUFACTURER'S RECOMMENDATIONS.
- PROVIDE STAINLESS STEEL DUCTWORK IN CHEMICAL ROOM.
- CONFIGURE UNIT SUCH THAT ALL ACCESS IS FROM THIS SIDE.
- PROVIDE WMSO ON FAN INTAKE.
- 10" x 10" DOWN TO +/- 1'-6" A.F.F. PROVIDE OED W/ WMS.
- MOUNT AS HIGH AS POSSIBLE.
- MOUNT THERMOSTATS AND HUMIDISTATS A MAXIMUM OF 48" A.F.F. (TYP. ALL)

1 MECHANICAL FLOOR PLAN
 SCALE: 1/4"=1'-0"

