

SHAWNEE HIGH SCHOOL PROPOSED SITE IMPROVEMENTS

LRHSD PROJECT NO. 2-008-25/8344

SHAWNEE HIGH SCHOOL  
600 TABERNACLE ROAD  
MEDFORD, NJ 08055

LENAPE REGIONAL HIGH SCHOOL  
SCHOOL DISTRICT

PREPARED FOR THE  
LENAPE REGIONAL HIGH SCHOOL DISTRICT BOARD OF EDUCATION

SAMUEL B. GREEN PRESIDENT  
JOANNE E. HARMON VICE PRESIDENT  
MATTHEW D. WEBB SUPERINTENDENT

CIVIL ENGINEER  
CME ASSOCIATES  
CONSULTING AND MUNICIPAL ENGINEERS  
344 NORTH ROUTE 73  
BERLIN, NJ 08009

INDEX OF CIVIL ENGINEERING DRAWINGS

- SHEET NO. 1 - TITLE SHEET
- SHEET NO. 2 - OVERALL SITE PLAN
- SHEET NO. 3 - STADIUM - DEMOLITION PLAN
- SHEET NO. 4 - STADIUM - SITE PLAN
- SHEET NO. 5 - STADIUM PARKING LOT - DEMOLITION PLAN
- SHEET NO. 6 - STADIUM PARKING LOT - SITE PLAN
- SHEET NO. 7 - MIDDLE PARKING LOT - DEMOLITION PLAN
- SHEET NO. 8 - MIDDLE PARKING LOT - SITE PLAN
- SHEET NO. 9 - STUDENT PARKING LOT - DEMOLITION PLAN
- SHEET NO. 10 - STUDENT PARKING LOT - SITE PLAN
- SHEET NO. 11 - MAIN OFFICE LOT & DROP OFF DRIVEWAY - DEMOLITION PLAN
- SHEET NO. 12 - MAIN OFFICE LOT & DROP OFF DRIVEWAY - SITE PLAN
- SHEET NO. 13 - MAIN DRIVEWAY - DEMOLITION PLAN
- SHEET NO. 14 - MAIN DRIVEWAY - SITE PLAN
- SHEET NO. 15 - IRRIGATION SYSTEM
- SHEET NO. 16 - STADIUM - SITE PLAN
- SHEET NO. 17 - SOIL EROSION & SEDIMENT CONTROL DETAILS
- SHEET NO. 18 - SECTIONS & DETAILS 1
- SHEET NO. 19 - SECTIONS & DETAILS 2

ARCHITECT  
THE DESIGN COLLABORATIVE  
ARCHITECTS AND PLANNERS, P.A.  
1940 ROUTE 9 NORTH  
CAPE MAY COURT HOUSE, NJ 08210

INDEX OF ARCHITECTURAL DRAWINGS

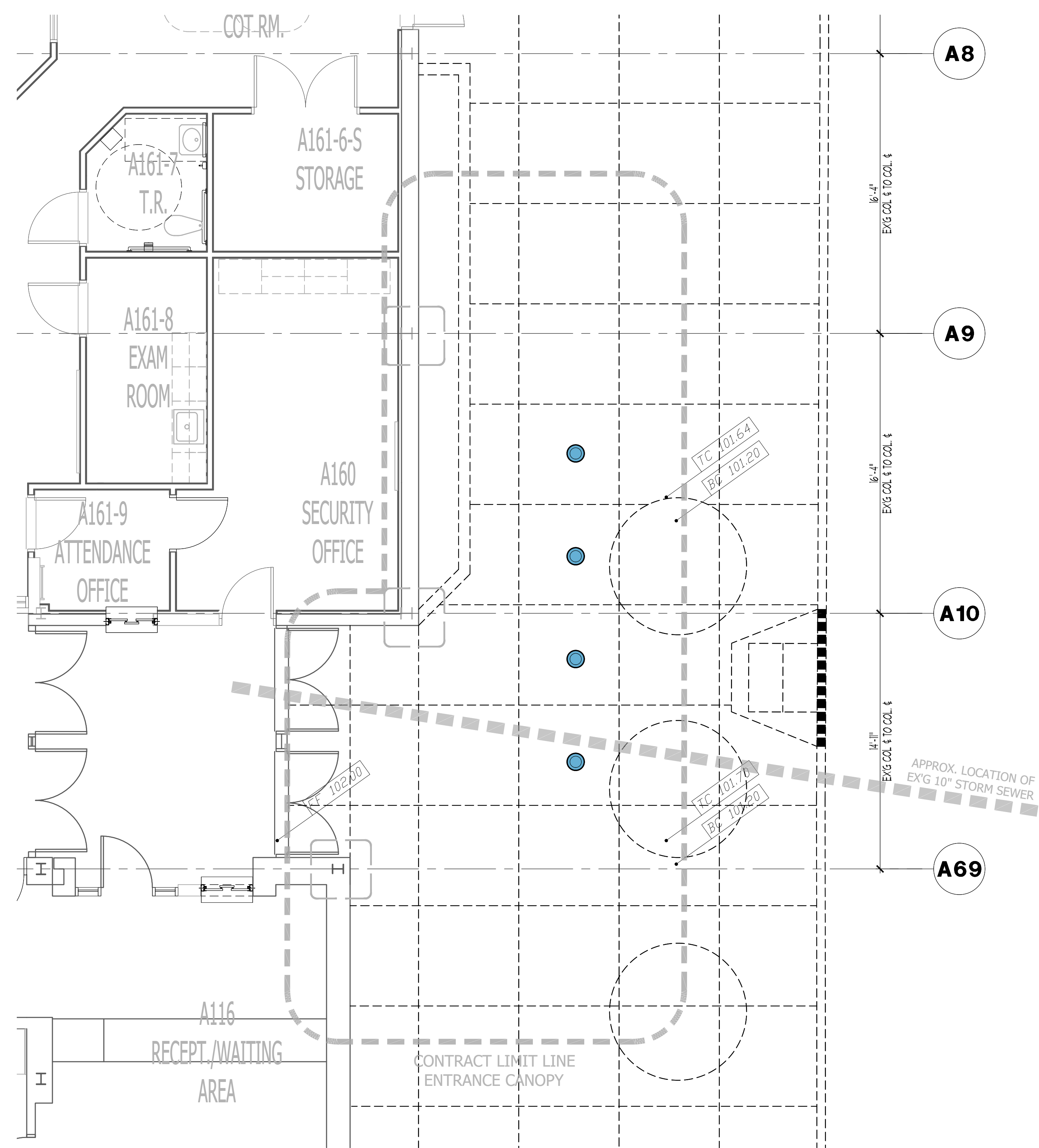
- G0.0 COVER SHEET
- A1.0 GENERAL NOTES AND SCHEDULES
- A1.1 PLANS AND DETAILS
- A1.2 SCHEDULES AND DETAILS
- A1.3 PORTICO SECTIONS AND DETAILS
- A1.4 PORTICO DETAILS

ELECTRICAL ENGINEER  
CONCORD ENGINEERING  
CONSULTING ENGINEERS  
520 SOUTH BURNT MILL ROAD  
VOORHEES, NJ 08043

INDEX OF ELECTRICAL ENGINEERING DRAWINGS

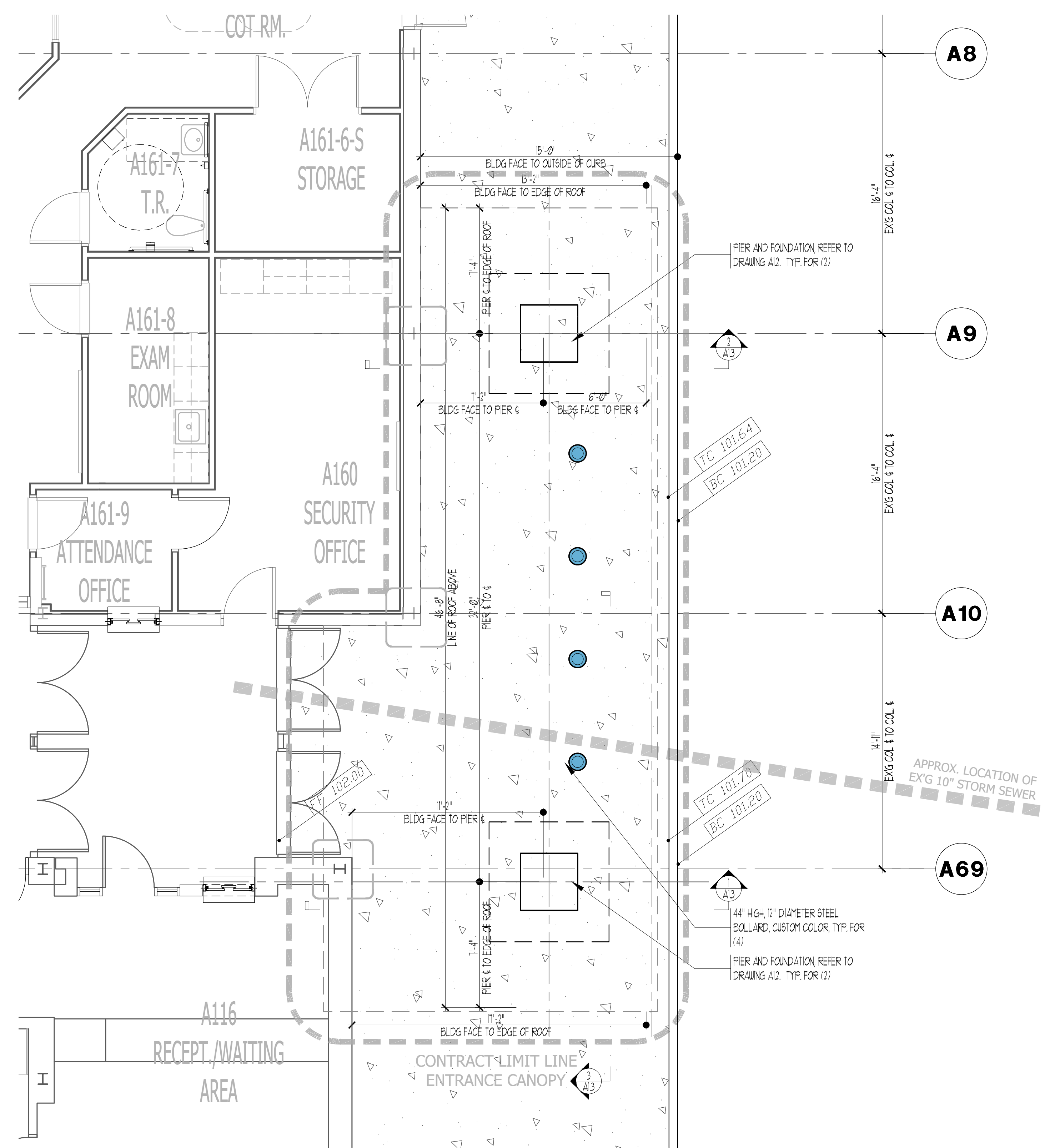
- ELECTRICAL**
- E0.1 ELECTRICAL COVER SHEET
- E0.2 ELECTRICAL SPECIFICATIONS AND DETAILS
- ED1.1 ELECTRICAL STADIUM PARKING LOT - DEMOLITION PLAN
- E1.1 ELECTRICAL STADIUM PARKING LOT - NEW WORK PLAN
- E1.2 ELECTRICAL ENTRANCE PORTICO PLANS





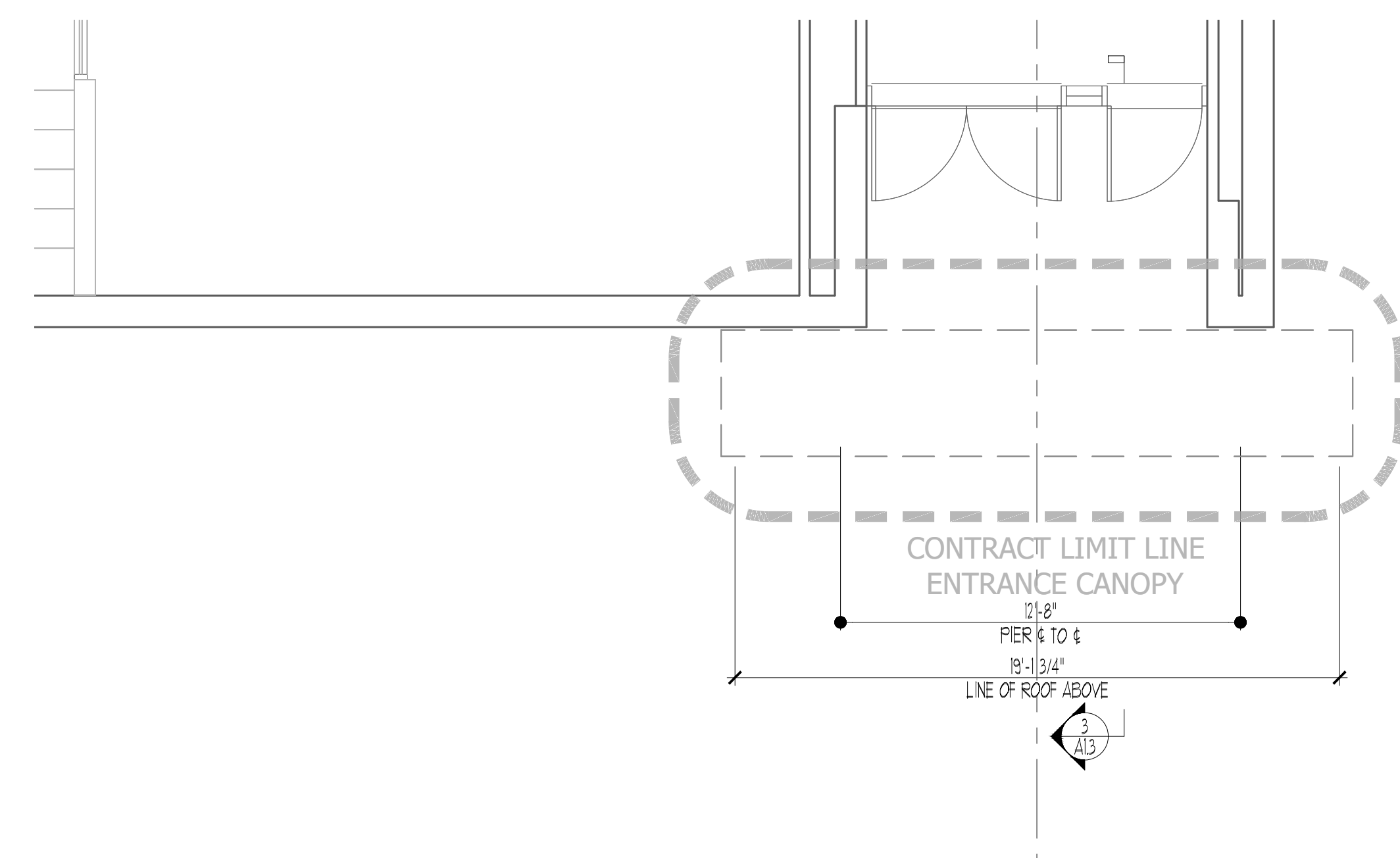
1  
A1.1 **DEMOLITION PLAN**  
**MAIN ENTRANCE PORTICO**

1/4"=1'-0"



2  
A1.1 **PROPOSED PLAN**  
**MAIN ENTRANCE PORTICO**

1/4"=1'-0"

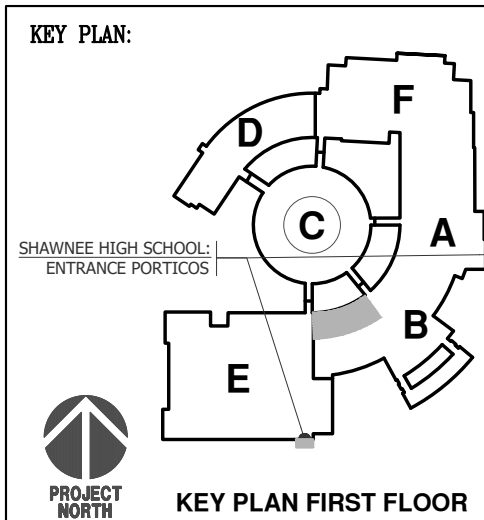


3  
A1.1 **PROPOSED PLAN**  
**GYMNASIUM CORRIDOR ENTRANCE PORTICO**

1/4"=1'-0"

03/17/26	1	RELEASED FOR BID
DATE	No.	REVISION

LOT NO. 3  
LENAPE REGIONAL HIGH SCHOOL DISTRICT NO. 2-008-25/8344  
SITE RESTORATIONS AND IMPROVEMENTS  
**SHAWNEE HIGH SCHOOL**  
600 TABERNACLE ROAD, MEDFORD, NEW JERSEY 08055  
MEDFORD TOWNSHIP  
BURLINGTON COUNTY  
Linda M. Vinzell, AIA, Secretary/Treasurer  
New Jersey Architect Lic. # 2101018000, P.E. # 2101018000  
Drew C. Dangler, AIA, President  
New Jersey Lic. # 2101018000

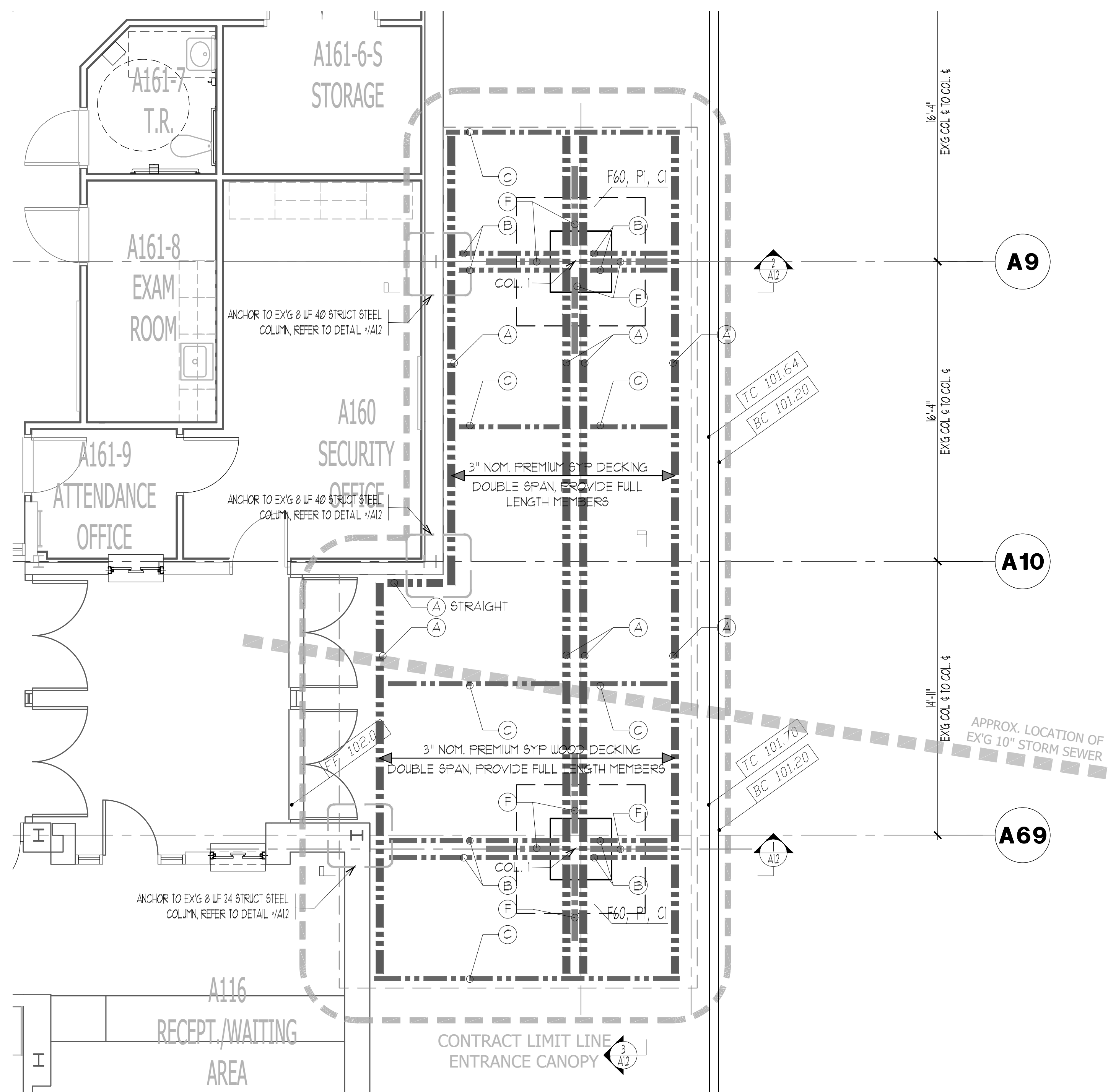


**THE DESIGN COLLABORATIVE**  
ARCHITECTS AND PLANNERS, P.A.  
640 ROUTE 9 NORTH  
CAPE MAY COURT HOUSE, NEW JERSEY 0820  
PHONE: 609 466 4111 FAX: 609 466 3838  
WWW.DCARCHITECT.COM

SCALE:	AS NOTED	DRAWN BY: DCD
CONV. No.:	8344	CHECKED BY: DCD
DATE:	07/14/25	

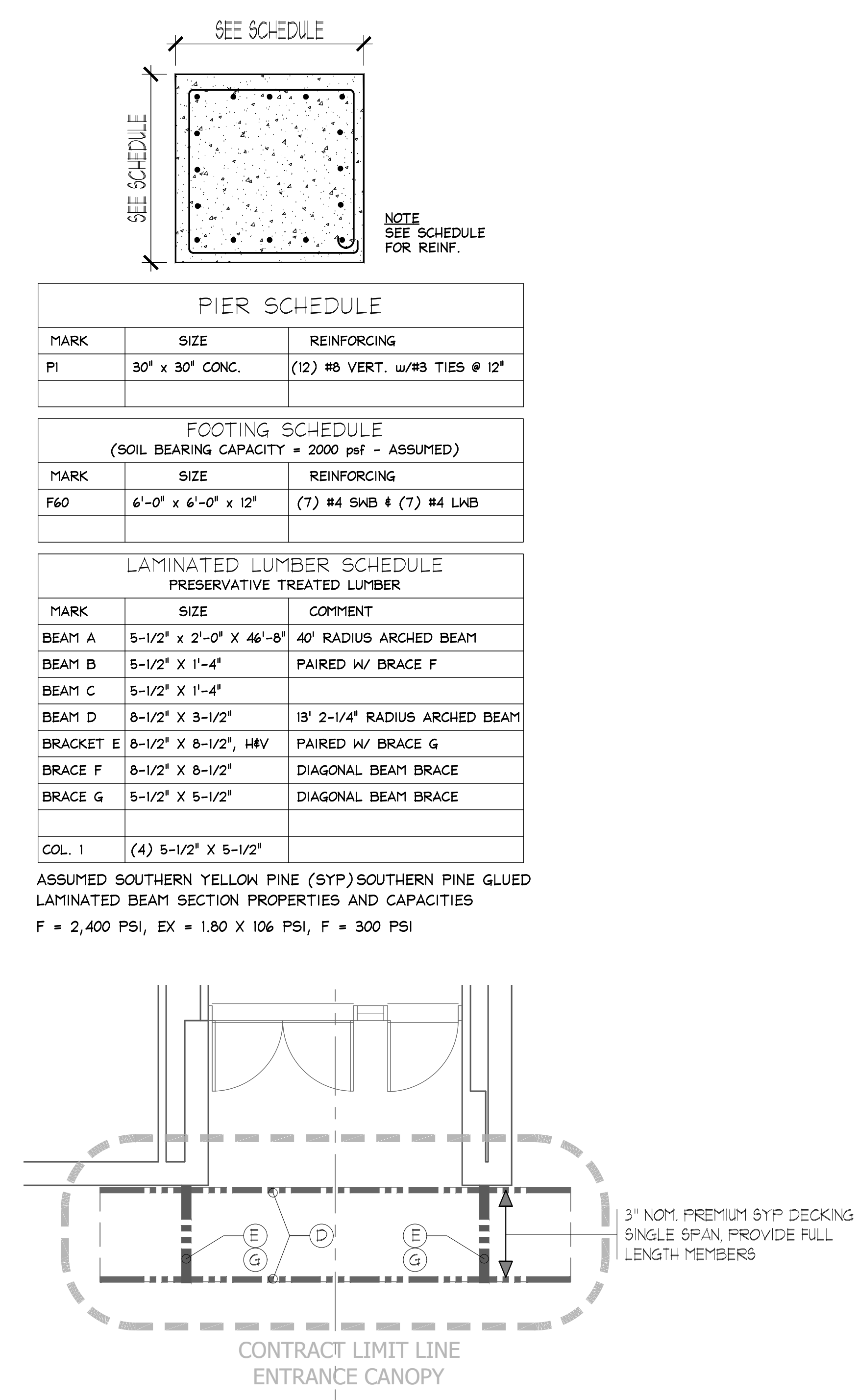
SHEET TITLE:  
PLANS AND DETAILS

SHEET No.:  
**A1.1**



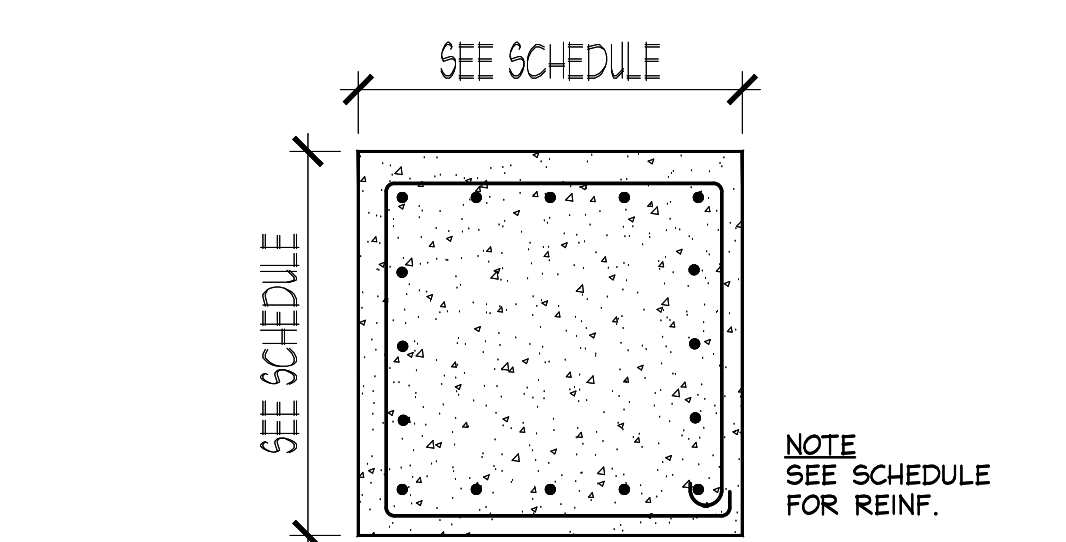
1  
A1.2 **STRUCTURAL PLAN  
MAIN ENTRANCE PORTICO**

1/4"=1'-0"



1  
A1.2 **STRUCTURAL PLAN  
GYMNASIUM ENTRANCE PORTICO**

1/4"=1'-0"

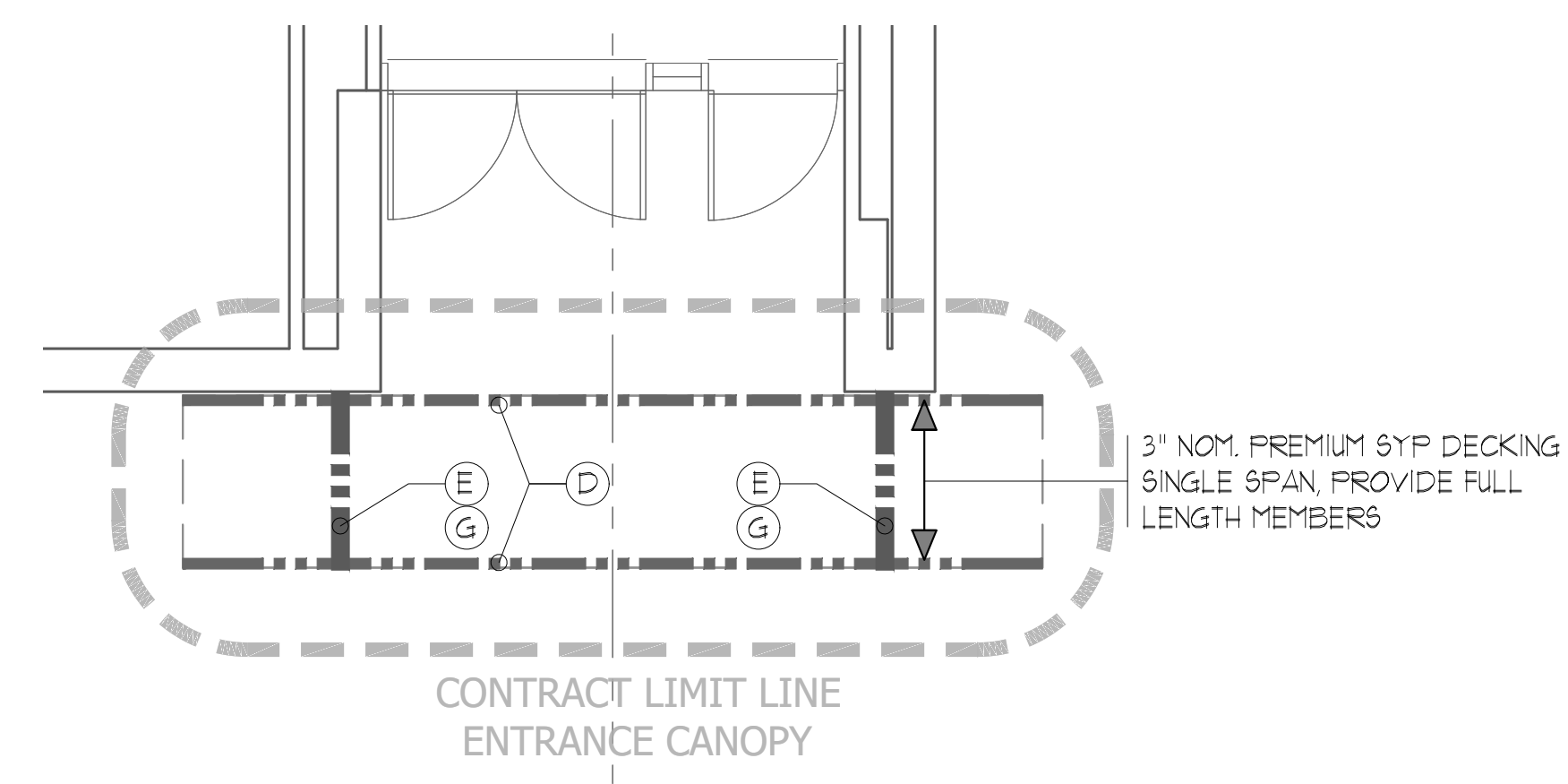


PIER SCHEDULE		
MARK	SIZE	REINFORCING
PI	30" x 30" CONC.	(12) #8 VERT. w/#3 TIES @ 12"

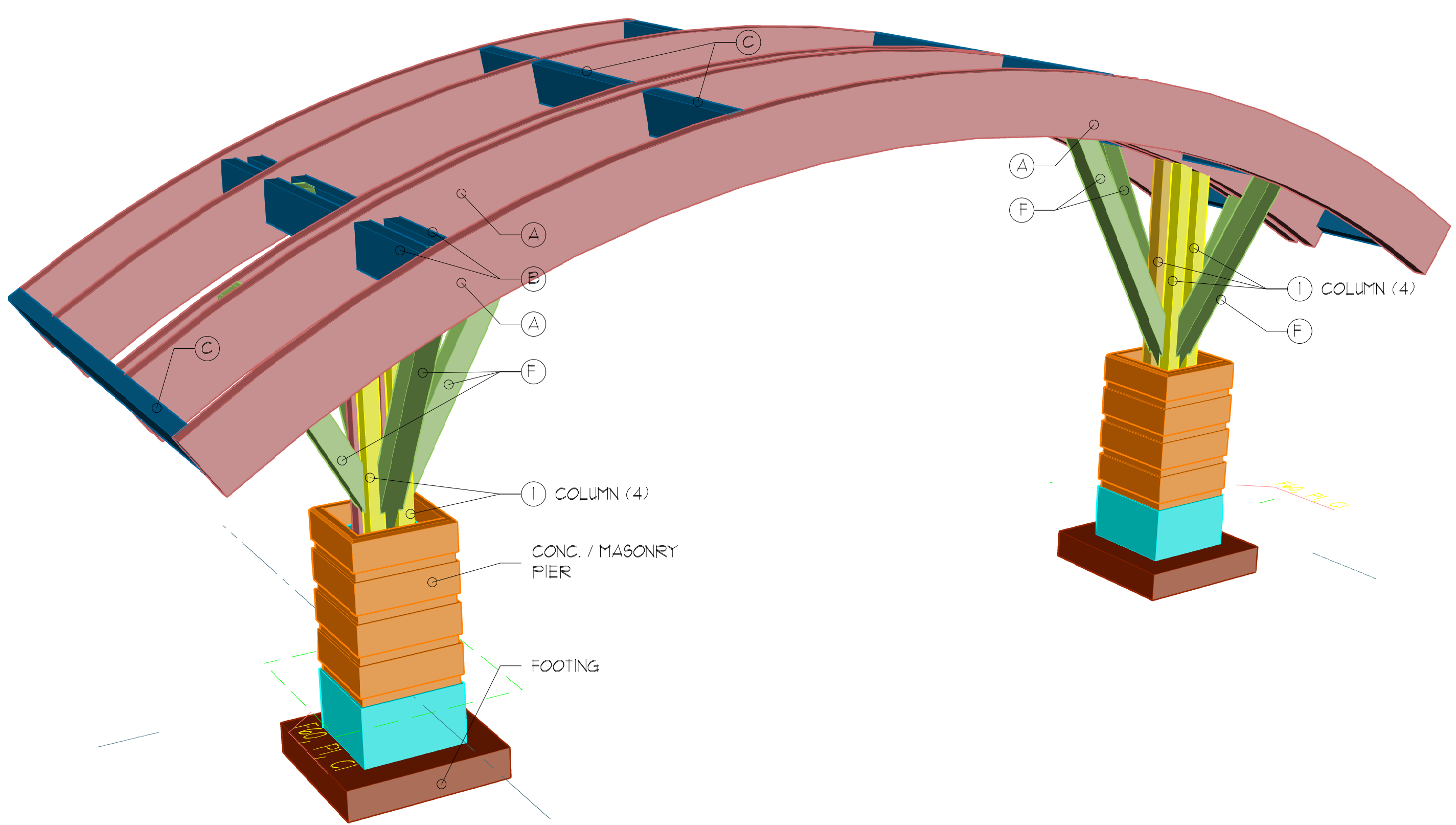
FOOTING SCHEDULE (SOIL BEARING CAPACITY = 2000 psf - ASSUMED)		
MARK	SIZE	REINFORCING
F60	6'-0" x 6'-0" x 12"	(7) #4 SHB # (7) #4 LWB

LAMINATED LUMBER SCHEDULE PRESERVATIVE TREATED LUMBER		
MARK	SIZE	COMMENT
BEAM A	5-1/2" x 2'-0" x 46'-8"	40' RADIUS ARCHED BEAM
BEAM B	5-1/2" x 1'-4"	PAIRED W/ BRACE F
BEAM C	5-1/2" x 1'-4"	
BEAM D	8-1/2" x 3-1/2"	19' 2-1/4" RADIUS ARCHED BEAM
BRACKET E	8-1/2" x 8-1/2", HV	PAIRED W/ BRACE G
BRACE F	8-1/2" x 8-1/2"	DIAGONAL BEAM BRACE
BRACE G	5-1/2" x 5-1/2"	DIAGONAL BEAM BRACE
COL. 1	(4) 5-1/2" x 5-1/2"	

ASSUMED SOUTHERN YELLOW PINE (SYP) SOUTHERN PINE GLUED LAMINATED BEAM SECTION PROPERTIES AND CAPACITIES  
F = 2,400 PSI, EX = 1.80 X 106 PSI, F = 300 PSI

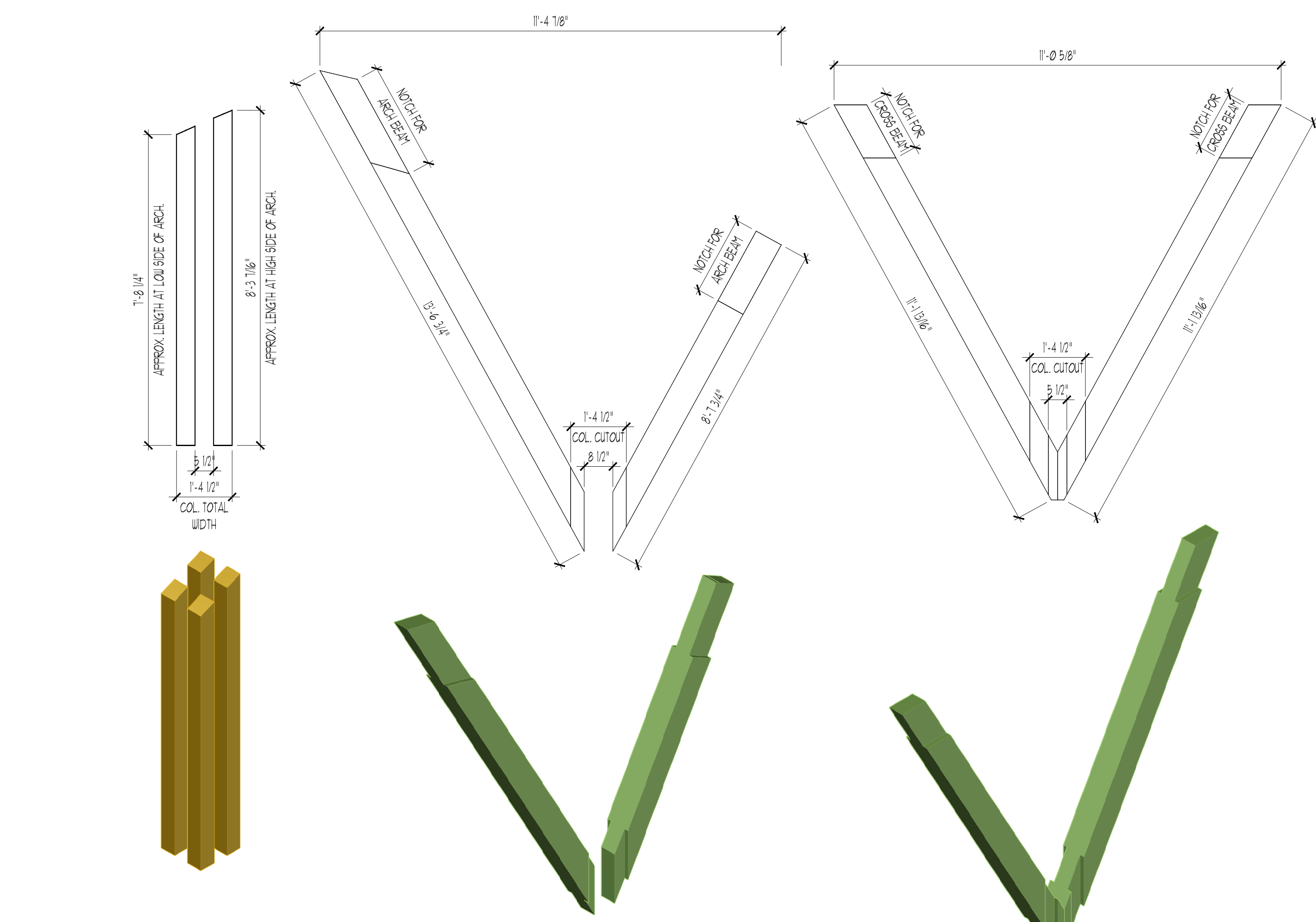


1  
A1.2 **DETAIL ISOMETRIC VIEW  
COLUMN AND FRAME BRACE MEMBERS**



1  
A1.2 **PERSPECTIVE VIEW  
ENTRANCE PORTICO**

N.T.S.



1  
A1.2 **DETAIL ISOMETRIC VIEW  
COLUMN AND FRAME BRACE MEMBERS**

N.T.S.

FILE C:\PROJECTS\144\ARCHITECTURAL\144-16-SERIES\A1.034-A1-SERIES.DWG DATE: 3/10/2016 10:57 AM USER: dcm.dwg

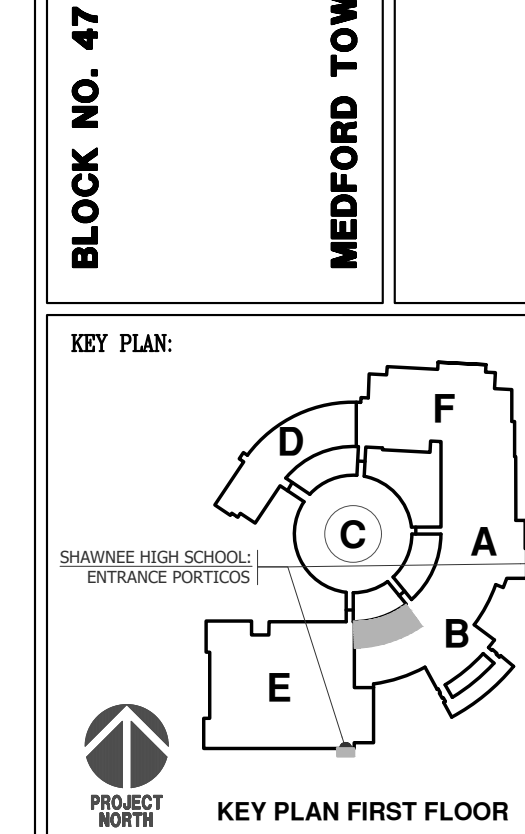
03/17/26	1	RELEASED FOR BID
DATE	No.	REVISION

LOT NO. 3  
BURLINGTON COUNTY

LENAPE REGIONAL HIGH SCHOOL DISTRICT NO. 2-008-25/8344  
SITE RESTORATIONS AND IMPROVEMENTS  
**SHAWNEE HIGH SCHOOL**  
600 TABERNACLE ROAD, MEDFORD, NEW JERSEY 08055

BLOCK NO. 47  
MEDFORD TOWNSHIP

Drawn by: C. Dangler, AIA, President  
New Jersey Lic. # 2101008800  
Linda W. Vinzell, AIA, Secretary/Treasurer  
New Jersey Lic. # 2101008800, P.E. # 2101008800

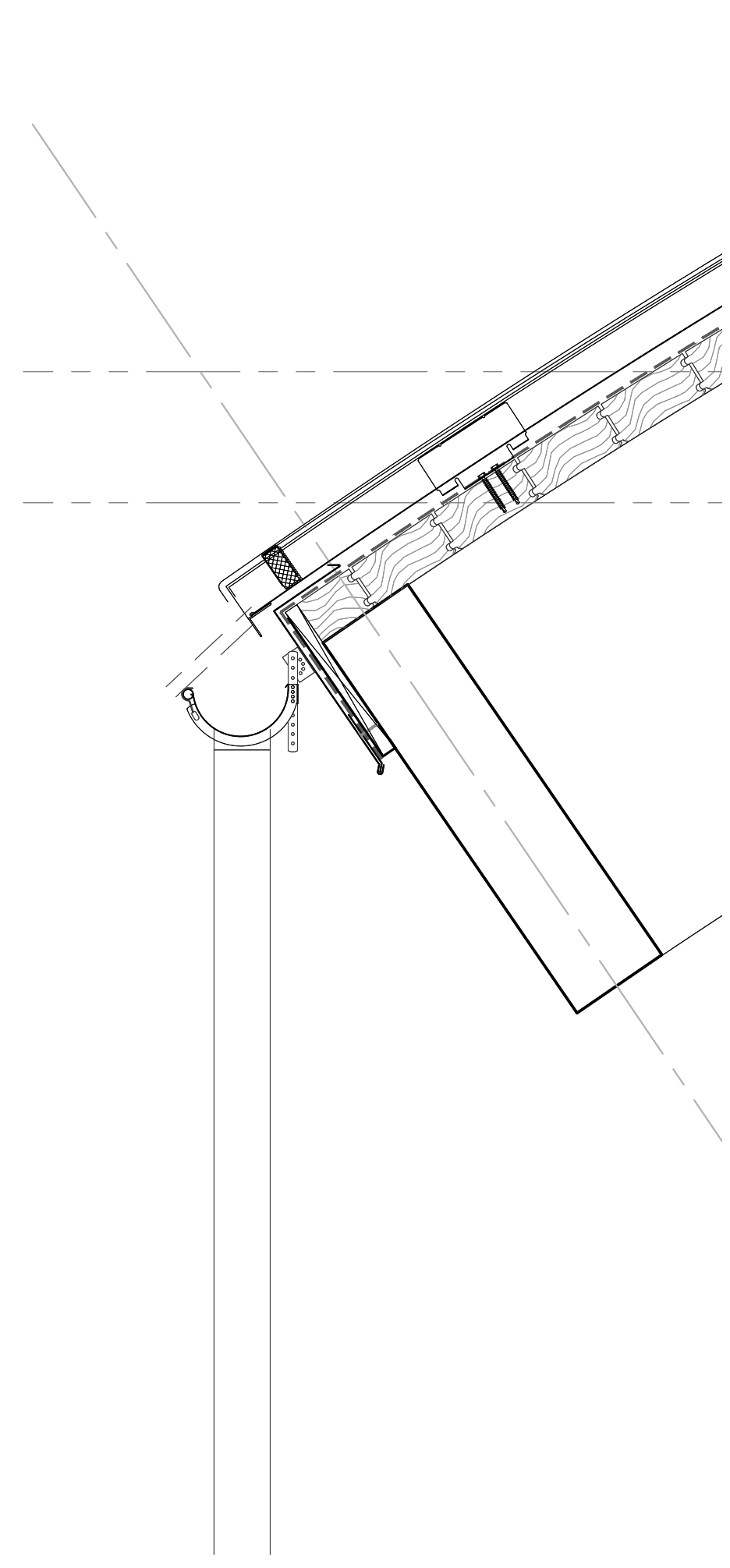


**THE DESIGN COLLABORATIVE**  
ARCHITECTS AND PLANNERS, P.A.  
840 ROUTE 9 NORTH  
CAPE MAY COURT HOUSE, NEW JERSEY 0820  
PHONE: 609 466 4111 FAX: 609 466 3838  
WWW.DCARCHITECT.COM

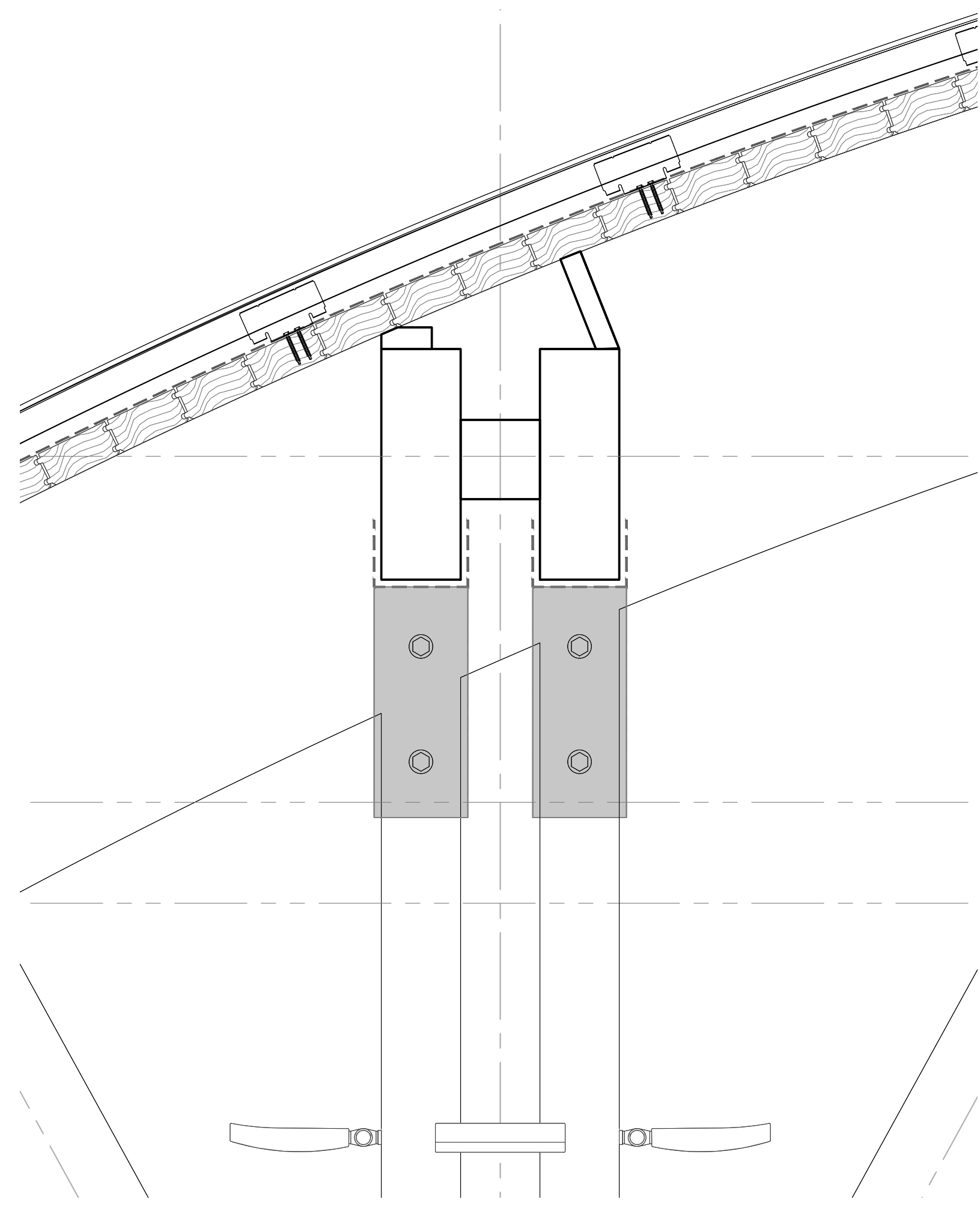
SCALE:	AS NOTED	DRAWN BY:	DCD
CONV. No.:	8344	CHECKED BY:	DCD
DATE:	07/14/25		

SHEET TITLE:  
STRUCTURAL PLANS & DETAILS  
SHEET No.:  
**A1.2**

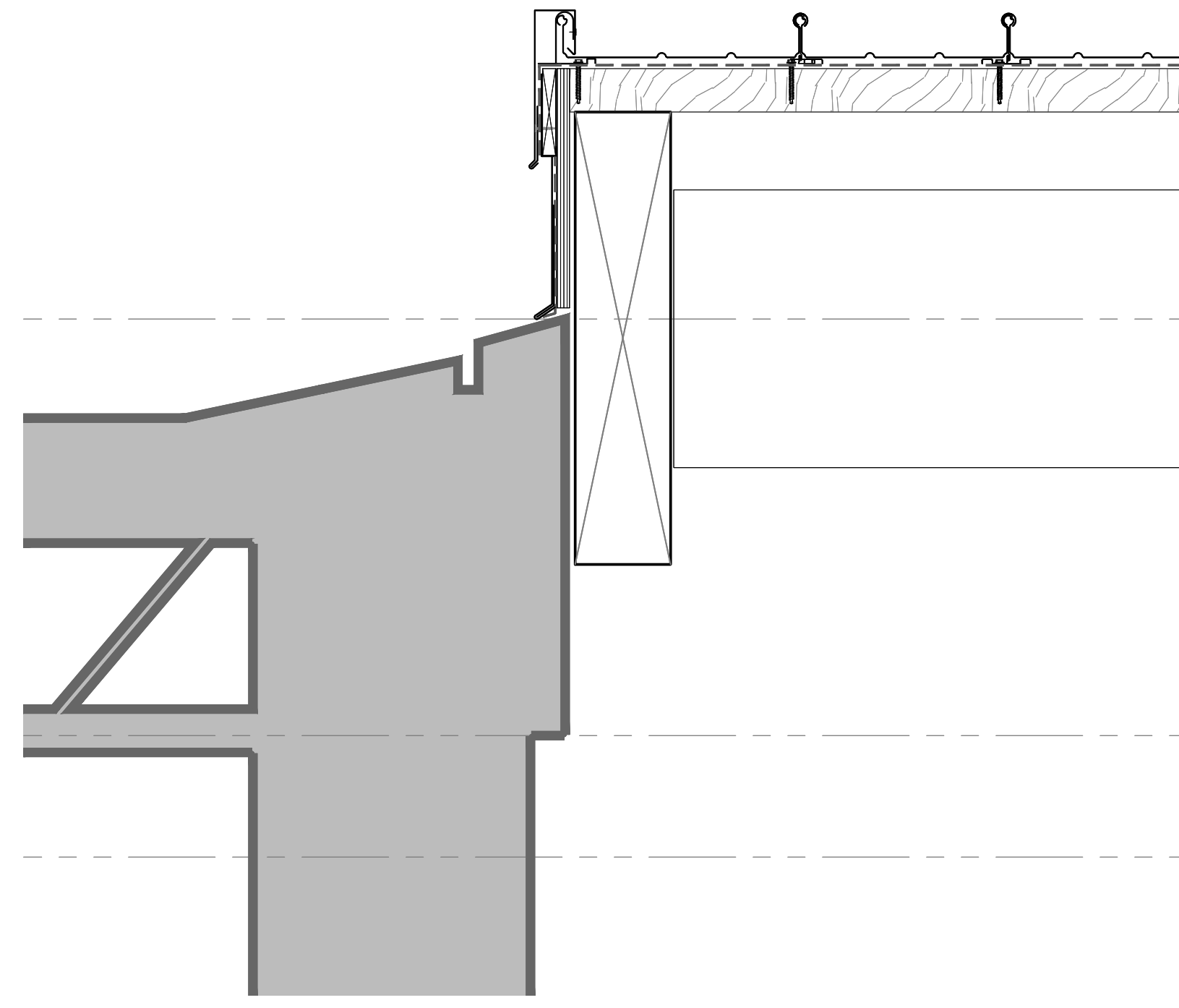




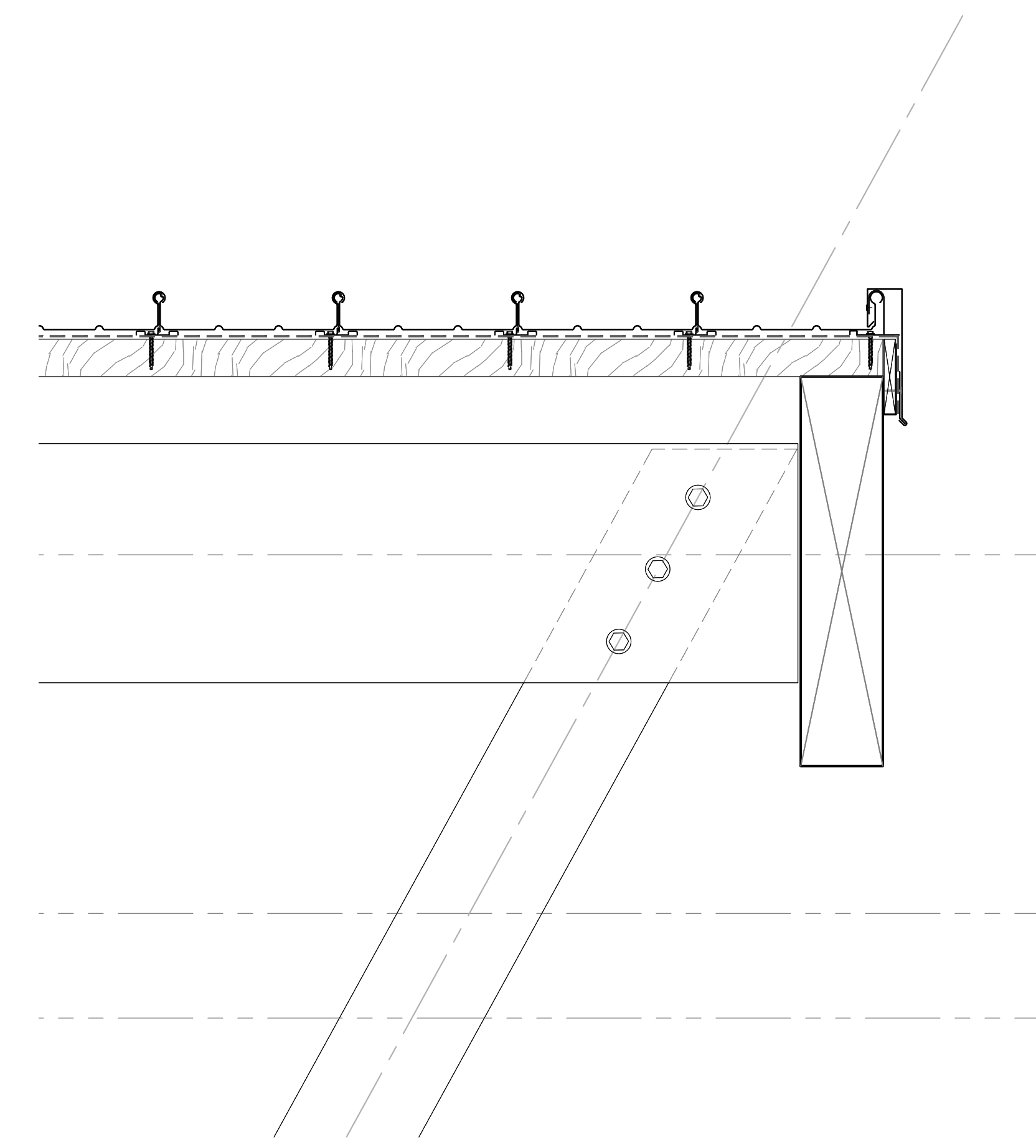
5  
A1.4 **DETAIL**  
**MAIN ENTRANCE PORTICO** 1-1/2"x1'-0"



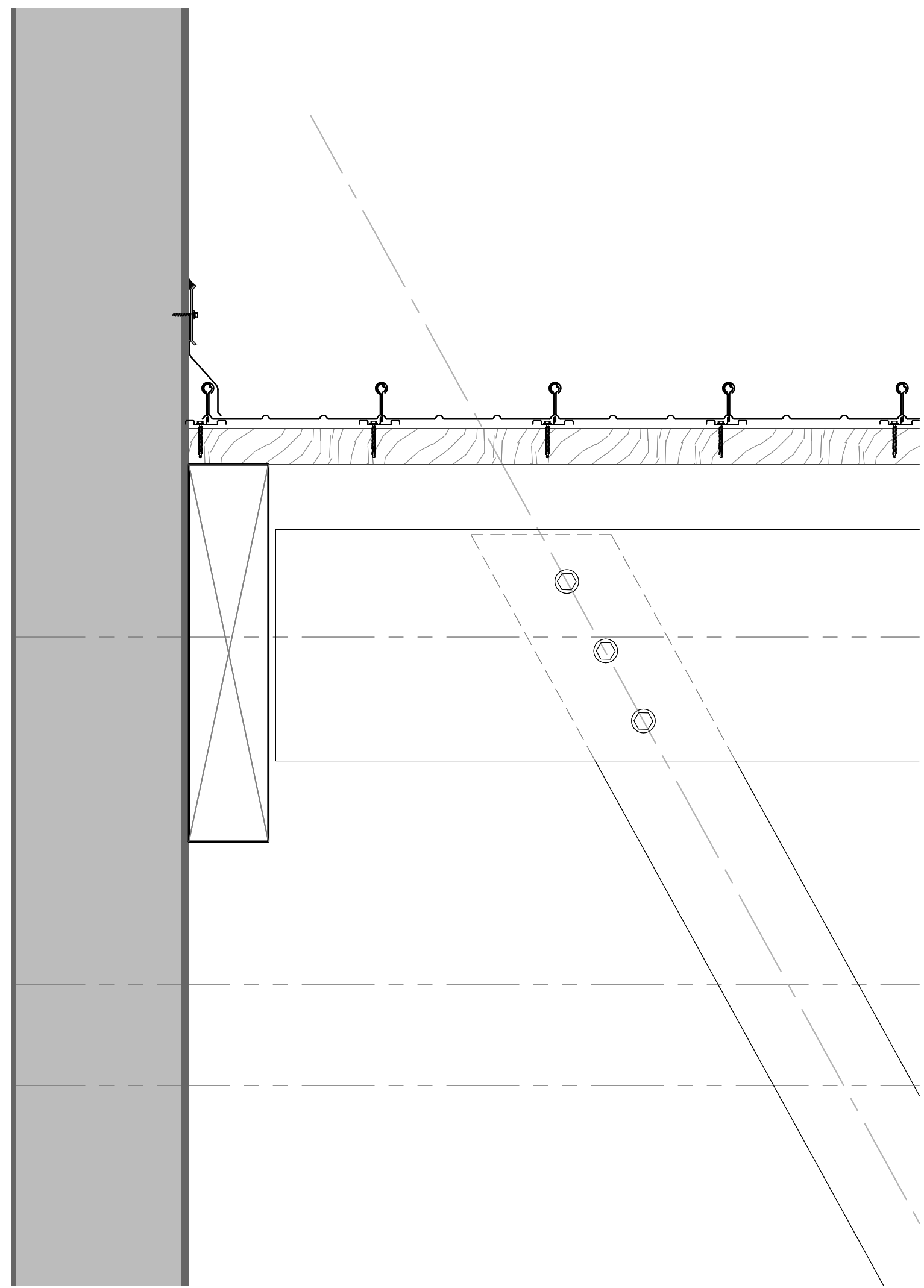
5  
A1.4 **DETAIL**  
**MAIN ENTRANCE PORTICO** 1-1/2"x1'-0"



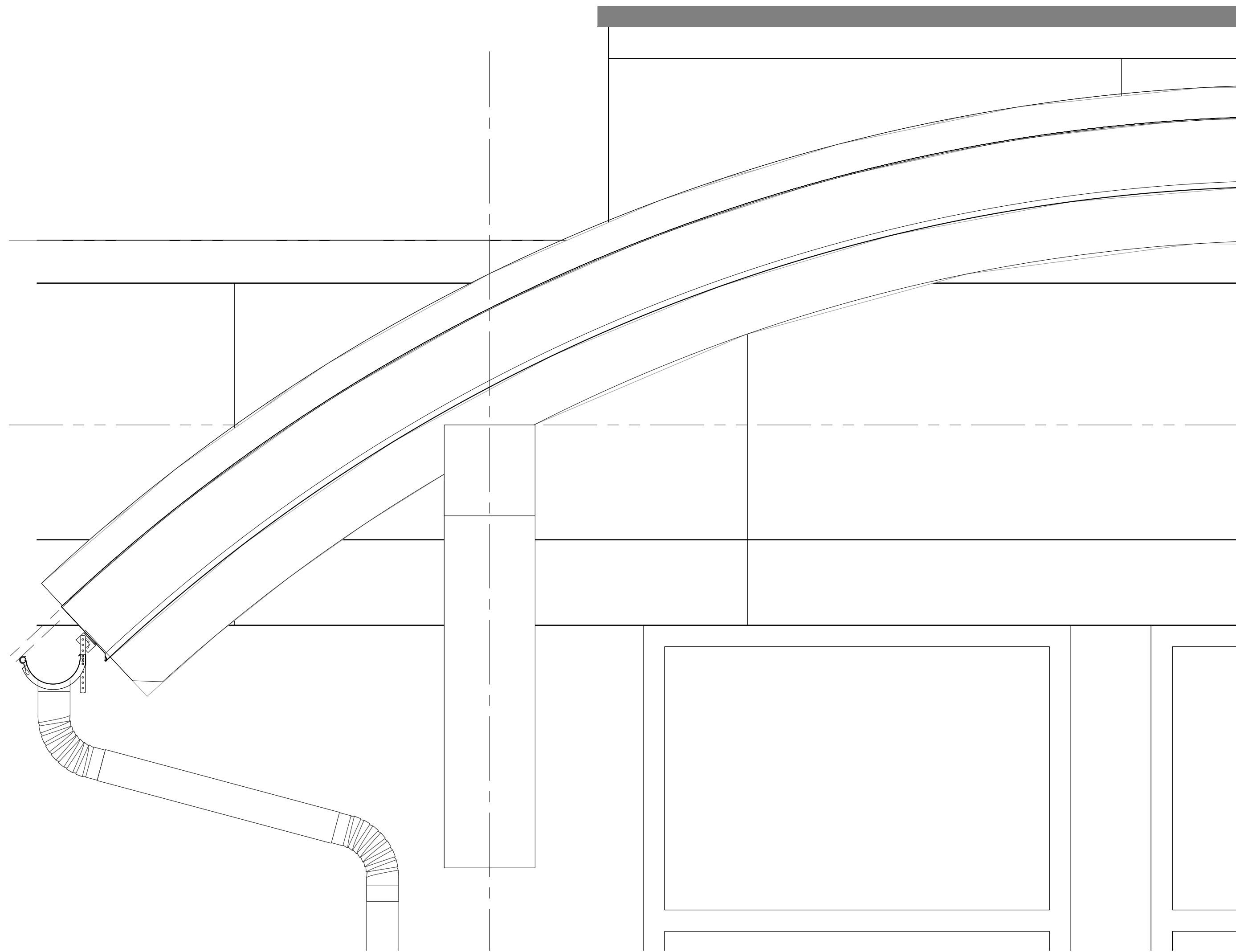
5  
A1.4 **DETAIL**  
**MAIN ENTRANCE PORTICO** 1-1/2"x1'-0"



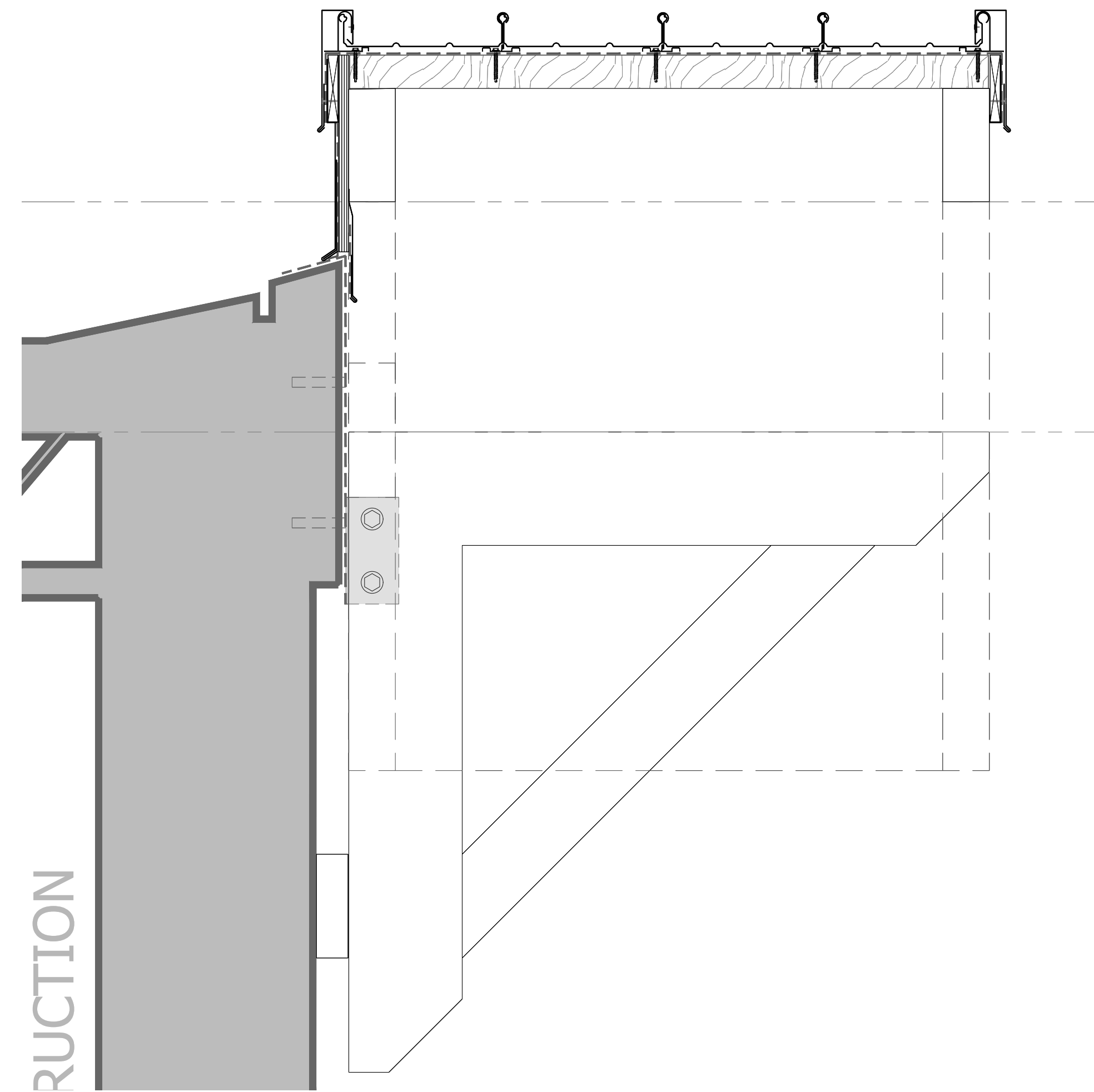
5  
A1.4 **DETAIL**  
**MAIN ENTRANCE PORTICO** 1-1/2"x1'-0"



5  
A1.4 **DETAIL**  
**MAIN ENTRANCE PORTICO** 1-1/2"x1'-0"



5  
A1.4 **DETAIL**  
**MAIN ENTRANCE PORTICO** 1-1/2"x1'-0"

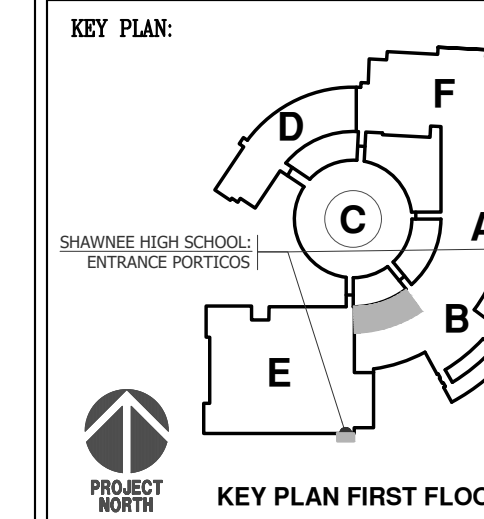


5  
A1.4 **DETAIL**  
**MAIN ENTRANCE PORTICO** 1-1/2"x1'-0"

FILE C:\PROJECTS\14\ARCHITECTURAL\14-05-SERIES\A1.034-A1-SERIES.DWG DATE: 3/10/2016 10:56 AM USER: dcm.dwg

03/17/26 1 RELEASED FOR BID  
DATE No. REVISION

LOT NO. 3  
LENAPE REGIONAL HIGH SCHOOL DISTRICT NO. 2-008-25/8344  
SITE RESTORATIONS AND IMPROVEMENTS  
**SHAWNEE HIGH SCHOOL**  
600 TABERNACLE ROAD, MEDFORD, NEW JERSEY 08055  
BURLINGTON COUNTY  
MEDFORD TOWNSHIP  
Drew C. Dangler, AIA, President  
New Jersey Lic. # 210108880  
Linda M. Vinzell, AIA, Secretary/Treasurer  
New Jersey Lic. # 210108880



**THE DESIGN COLLABORATIVE**  
ARCHITECTS AND PLANNERS, P.A.  
1040 ROUTE 9 NORTH  
CAPE MAY COURT HOUSE, NEW JERSEY 08210  
PHONE: 609 466 4111 FAX: 609 466 3838  
WWW.DESIGNCOLLABORATIVE.COM

SCALE: AS NOTED DRAWN BY: DCD  
CONV. No.: 8344 CHECKED BY: DCD  
DATE: 07/14/25

SHEET TITLE: PORTICO DETAILS

SHEET No.: **A1.4**